

THREE CHIEFS — CABO



Builder: CABO

Year Built: 2008

Model: Sport Fisherman

Price: PRICE ON APPLICATION

Location: United States

LOA: 52' 0" (15.85m)

Beam: 17' 9" (5.41m)

Max Draft: 4' 11" (1.50m)

Cruise Speed: 34 Kts. (39 MPH)

Our experienced yacht broker, Andrey Shestakov, will help you choose and buy a yacht that best suits your needs **Three Chiefs — CABO** from our catalogue. Presently, at Shestakov Yacht Sales Inc., we have a wide variety of yachts available on our sale's list. We also work in close contact with all the big yacht manufacturers from all over the world.

If you would like to buy a yacht **Three Chiefs — CABO** or would like help answering any questions concerning purchasing, selling or chartering a yacht, please call **+1(954)274-4435**

TABLE OF CONTENTS

TABLE OF CONTENTS	2
SPECIFICATIONS	3
Overview	3
Basic Information	3
Dimensions	3
Speed, Capacities and Weight	3
Accommodations	3
Hull and Deck Information	3
Engine Information	4
DETAILED INFORMATION	5
Accommodations	5
Salon	5
Galley	5
Deck Equipment	5
Electronics	6
Mechanical	6
Remarks	6
Exclusions	7
Disclaimer	7
PHOTOS	8
CONTACTS	13
Contact details	13
Telephones	13
Office hours	13
Address	13

SPECIFICATIONS

Overview

The Three Chiefs is ready to go with new bottom paint and prop speed new in March 2015. The boat has been meticulously maintained by a full time captain and has been a one owner boat. Owner has already taken delivery of new boat and is very motivated! Bring all offers!

Basic Information

Category: Sport Fisherman

Model Year: 2008

Year Built: 2008

Country: United States

Dimensions

LOA: 52' 0" (15.85m)

Beam: 17' 9" (5.41m)

Max Draft: 4' 11" (1.50m)

Speed, Capacities and Weight

Cruise Speed: 34 Kts. (39 MPH)

Displacement: 55950 Pounds

Water Capacity: 200 Gallons

Fuel Capacity: 1400 Gallons

Accommodations

Total Cabins: 2

Hull and Deck Information

Hull Material: Fiberglass

Engine Information

Engines: 2

Manufacturer: MAN

Engine Type: Inboard

Fuel Type: Diesel

DETAILED INFORMATION

Accommodations

MASTER STATEROOM

Cabin offers the optional Teak and holly flooring with a carpet overlay throughout. Master stateroom is forward with an island double berth with storage drawers below. Hanging lockers and rod storage to port and starboard above the berth, new Samsung flat screen TV, New Kenwood CD, DVD, AM/FM. Directly aft and starboard is the master head with sink, Vacuflush head, and separate stall shower.

GUEST STATEROOM

On the port side is the guest stateroom with over under bunks, large hanging locker and plenty of storage. Under bunk is also location of central vacuum.

Salon

The entire cabin offers the optional Teak and holly flooring with a carpet overlay throughout. The main cabin is aft with large L-shaped couch with storage under one side and pull out bed under the other. There is also a removable table, New 47" Samsung TV, above sofa rod locker, w/ electric door, lots of cabinet storage, BOSE entertainment center with surround sound. This area also offers a large hatch in the center of the floor to access forward bilges with lots more storage.

Galley

(4) Burner ceramic cook top Cook top hood Corian countertop w/custom sea rails Double sink Garbage disposal microwave convection oven Storage compartments w/drawers throughout. Trash receptacle compartment Subzero freezer & refrigerator undercounter (2) drawers each Countertop lighting

Deck Equipment

From the cockpit you step up to the expansive air conditioned (30,000 btu's) helm deck area. There is a large L-shaped settee to port with cushions, rod and general storage below. There are (3) comfortable Stidd helm chairs at the forward end. The starboard side cabinetry houses tackle and storage drawers and concealed U-line pull out dual refrigerator drawers. There is a molded fiberglass hardtop with US 9 electric teaser reels in a recessed compartment, overhead lighting and 4 sided enclosure with an electric center opening vent, windshield wipers and washers. LED lighting in both hard tops. MAN electric engine gauges and backup control system and updated Garmin electronics.

Electronics

Helm Deck

- KVH satellite TV
- Global Star SAT phone with (SATFI)
- Garmon 7215 multi function touch screen displays
- Garmon chirp technology sounder
- Siris XM weather and satellite radio
- Garmon HD radar
- Garmon Autopilot
- Icom VHF
- Clarion stereo system
- FCI water maker remote

Tower Dash

- Garmon 10" multifunction display
- Icom VHF radio

Mechanical

Dual generators:

- Onan 21.5KW
- Onan 12KW
- FCI water maker (800 gallons per day)
- New Eskimo Ice chipper
- Glendinning 50amp shore cable reel
- Newmar battery chargers (new)
- Large capacity livewell/ Tuna tubes pump
- Anchor Pulpit
- Electric Windlass

Remarks

If bigger is really better, the Cabo 52 should easily satisfy the needs of the most demanding

offshore angler. Built on a modified-V hull, the oversized cockpit and enormous bridge deck of the 52 are made possible by the boat's broad 17'9" beam. Standard fishing amenities include a bait-rigging station with freezer, 75-gallon transom livewell, two large in-deck fish boxes, and tackle storage drawers. Forward, a centerline helm position provides the captain with a clear 360-degree view of the action.

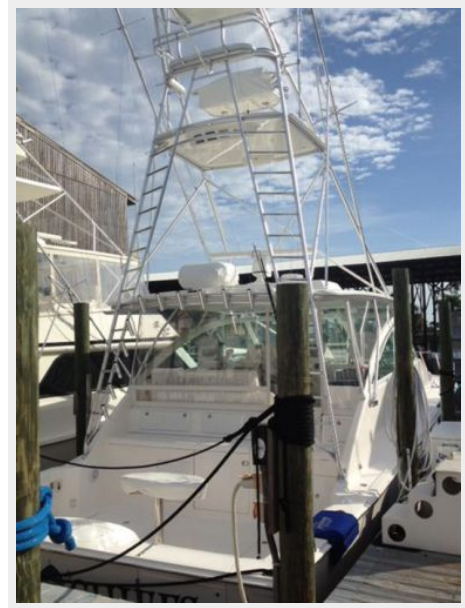
Exclusions

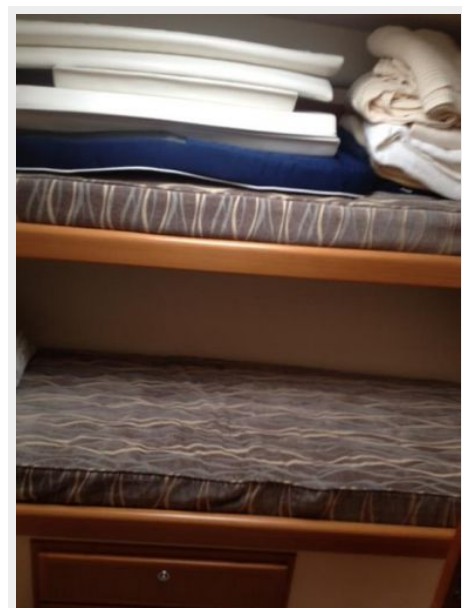
Owner's personal belongings.

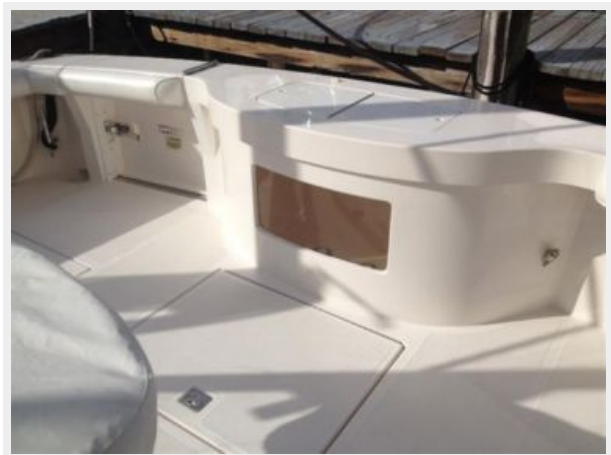
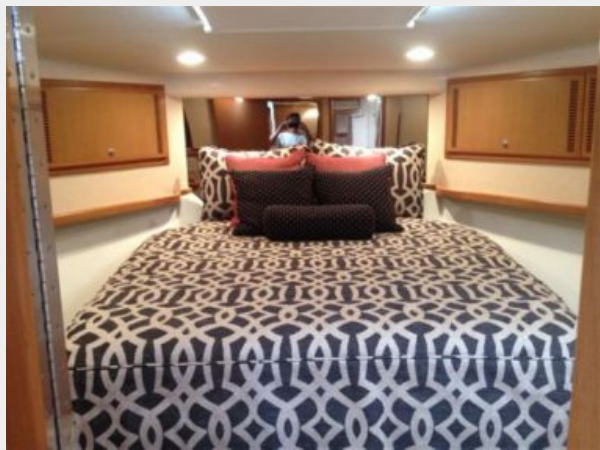
Disclaimer

The Company offers the details of this vessel or yacht in good faith but cannot guarantee or warrant the accuracy of this information nor warrant the condition of the vessel. A buyer should instruct his representatives, agents, or his surveyors, to investigate such details as the buyer desires validated. This vessel or yacht is offered subject to prior sale, price change, or withdrawal without notice.

PHOTOS











CONTACTS

Andrey Shestakov, leading yacht broker of the sales department of Shestakov Yacht Sales Inc. Shestakov Yacht Sales Inc., the official representative of the Miami/Fort Lauderdale FL headquarters.

Contact details

Email: **andrey@shestakovyachtsales.com**

Web: shestakovyachtsales.com/en/

Telephones

USA: **+1(954)274-4435**

Office hours

Monday – Saturday: **9:00 - 21:00 EDT**

Sunday: **closed**

Address



Harbour Towne Marina, 850 NE 3rd St,
STE 213, Dania, FL 33004