

## REEL DEAL — DONZI / ROSCIOLI



**Builder:** DONZI / ROSCIOLI

**Year Built:** 1995

**Model:** Sport Fisherman

**Price:** PRICE ON APPLICATION

**Location:** United States

**LOA:** 72' 0" (21.95m)

**Beam:** 18' 7" (5.66m)

**Max Draft:** 5' 11" (1.80m)

Our experienced yacht broker, Andrey Shestakov, will help you choose and buy a yacht that best suits your needs REEL DEAL — DONZI / ROSCIOLI from our catalogue. Presently, at Shestakov Yacht Sales Inc., we have a wide variety of yachts available on our sale's list. We also work in close contact with all the big yacht manufacturers from all over the world.

If you would like to buy a yacht REEL DEAL — DONZI / ROSCIOLI or would like help answering any questions concerning purchasing, selling or chartering a yacht, please call +1(954)274-4435

# TABLE OF CONTENTS

TABLE OF CONTENTS	2
SPECIFICATIONS	4
Overview	4
Basic Information	5
Dimensions	5
Speed, Capacities and Weight	5
Accommodations	5
Hull and Deck Information	5
Engine Information	6
DETAILED INFORMATION	7
Features	7
Exclusions	10
Disclaimer	10
PHOTOS	11
Custom aquarium glass for baitwell	11
New teak covering boards 1	11
New teak covering boards 2	11
Reupholstered helm chairs	11
NEW carbon fiber rocket launcher, holds 10 rods	12
Custom flybridge BBQ 2	12
Two new CableMaster	12
Custom flybridge BBQ 3	12
New JL Audio sound system	13
Custom freezer 25 sq ft	14
CONTACTS	15
Contact details	15
Telephones	15
Office hours	15

---

Address

15

---

# SPECIFICATIONS

---

## Overview

---

### New in Jan 2017:

- **New JL AUDIO sound system w bluetooth and remote, \$10,000 investment.**
- **New cutlass bearings**
- **Props and shafts aligned**
- **Engines aligned**
- **New prop speed**
- **New hull paint**
- **New boot stripe**
- **New bottom paint**
- **New cockpit non-skid**
- **Five new air conditioners**
- **New teak covering boards**
- **New dog latches on all floor hatches**
- **New aquarium glass on baitwell**
- **Two new Cablemaster reels**
- **Complete refit 2016.**
- **Complete paint job, hull and superstructure**
- **Complete overhaul of main engines, 300 hours SMOH.**
- **Electric bowthruster**
- **Eskimo ice machine**
- **Watermaker**
- **All new electronics**
- **High definition KVH satellite TV**
- **All new enclosures**
- **New interior**
- **New toilets with bidets**
- **... and more!**

---

## Basic Information

---

<b>Category:</b> Sport Fisherman	<b>Model Year:</b> 1995
<b>Year Built:</b> 1995	<b>Refit Year:</b> 2015
<b>Refit Type:</b> Complete	<b>Country:</b> United States
<b>Vessel Top:</b> Full / Tuna Tower	<b>Fly Bridge:</b> Yes
<b>Cockpit:</b> Yes	

---

## Dimensions

---

<b>LOA:</b> 72' 0" (21.95m)	<b>Beam:</b> 18' 7" (5.66m)
<b>Max Draft:</b> 5' 11" (1.80m)	

---

## Speed, Capacities and Weight

---

<b>Water Capacity:</b> 350 Gallons	<b>Fuel Capacity:</b> 2650 Gallons
------------------------------------	------------------------------------

---

## Accommodations

---

<b>Total Cabins:</b> 3	<b>Total Heads:</b> 3
<b>Crew Berths:</b> 2	<b>Crew Heads:</b> 1

---

## Hull and Deck Information

---

**Hull Material:** Fiberglass

---

## Engine Information

---

**Engines:** 2

**Manufacturer:** Detroit Diesel/MTU

**Model:** 16V92

**Engine Type:** Inboard

**Fuel Type:** Diesel

# DETAILED INFORMATION

## Features

The three stateroom, three head layout, and separate crew quarters for 2, allows for a spacious salon and a highly social and functional galley.

In the cockpit you can swap the Murray Brothers fighting chair with a brand new carbon fiber rocket launcher configuration holding 10 rods.

Both engines have been Detroit Diesel/MTU factory majored complete overhaul.

**Additional recently refit items include:** Simrad AP28 autopilot (June 2015) Detroit Diesel engines overhauled (April 2014) by Detroit Diesel MACH V freshwater pump (May 2015) w one year warranty, along with new 12V Mate backup freshwater system cockpit paint by Roscioli (October 2014). superstructure paint by Roscioli (October 2014). hull paint by Roscioli (October 2014). waterline by Roscioli (October 2014). nonskid in cockpit, on foredeck, in flybridge. electric Glendinning cablemaster reels and cords x 2 (50amp) bowthruster, Vetus BOW 285 (May 2014) Two New Garmin 7212 GPS units electronics and transducers (April 2014) Garmin 6ft open array radar (April 2014) bluetooth connected sound system, bridge bottom paint A/C serviced and three new air compressors All New galley appliances galley teak and holly wood flooring gas BBQ on flybridge KVH Tracvision, 1080P HD DirecTV satellite receivers interior carpet throughout Leather dinette Leather Salon sofa Samsung Smart TVs in salon and staterooms toilets w bidets in all three bathrooms Carbon fiber look wall coverings in all showers shower and sink faucets in all three bathrooms vinyl floors in all three bathrooms stainless steel sink coverings in all three bathrooms three-sided enclosure with five zipouts and new tracks Sunbrella canvas cushion on dinette on flybridge custom aft sunshade aft canvas cockpit cover and frame Watermaker (1200gpd)

## COCKPIT

custom carbon fiber rocket launcher rod holder, 10 rods. Mounts in place of fighting chair aft dinette cushions clear glass on live well aquarium with lights Custom aft sunshade with folding extension hardware for all lockers complete paintjob and non-skid by Roscioli saltwater and freshwater quick disconnects (washdown) (x2) Glendinning Cablemasters reels and cords, 50A each. teak stepping on flybridge ladder Two NEW teak boarding steps (under gunwales, port and starboard) nonskid; on foredeck, in cockpit and in flybridge windshield glass Refinished and repainted windshield Repainted outriggers and hand rails Refrigerator drink box at salon door Murray Brothers fighting chair Cockpit Dinette seating to starboard Transom door w/ gate Transom fish box Ladder to bridge Engine room entrance Teak covering boards Rod holders in covering boards (6) Fish boxes in sole Eskimo ice machine Step box Fresh & salt water wash downs

---

## **FISHING EQUIPMENT**

Custom carbon fiber rod holder, 10 rods. Mounts in place of fighting chair Pipewelders tuna tower Rupp outriggers w/ center rigger Murray Brothers fighting chair Rod holders

## **SALON**

carpet Samsung TV, built-in, portside Samsung DVD player DirecTV HD-DVR receiver/recorder Denon receiver KVH Tracvision, 1080P bar stools at breakfast bar LED overhead lighting Dinette and Sofa cushions Light pecan wood paneling throughout Coffee table Mirror Electrical panel Salon door Blinds & draped lambrequins Overhead Speakers Entertainment center Designer lamps on end tables

## **MASTER STATEROOM**

carpet Queen size bed w/ NEW bedspread Samsung Flatscreen (April 2014) DirecTV HD receiver NEW Overhead lights, LED Storage under bunk Pecan wood paneling throughout Designer lamps Wood headboard Port holes Overhead hatch Drawer storage Hanging locker Safe Intercom Toshiba phone system 110V outlets En suite head

## **MASTER STATEROOM HEAD**

toilet and bidet Overhead lights, LED CARBON FIBER Wallpaper Wood floors Stainless Steel Sink and Faucets CARBON FIBER wall covering in Stall shower Shower head and faucet 110V outlets

## **GUEST STATEROOM AFT/PORT:**

Offset queen size berth w/ NEW bedspread Wood bulkhead Port hole Designer lamps 110V outlets Drawer space Overhead lights, LED Hanging locker En-suite head

## **GUEST HEAD**

toilet and bidet Overhead lights, LED CARBON FIBER Wallpaper Wood floors Stainless Steel Sink and Faucets CARBON FIBER wall covering in Stall shower Shower head and faucet 110V outlets

## **GUEST STATEROOM/STARBOARD**

Upper/lower single berths Comforter and throw pillows Port hole Carpet Drawer space Hanging locker Overhead lights, LED

## **GUEST HEAD**

toilet and bidet Overhead lights, LED CARBON FIBER Wallpaper Wood floors Stainless Steel Sink and Faucets CARBON FIBER wall covering in Stall shower Shower head and faucet 110V outlets



---

## **GALLEY**

Overhead lights, LED Marble counter tops- Rose Aurora Gaggenau 4 burner stove top Molded SS sink w/ Grohe faucet GE Microwave Refrigerator/freezer Garbage disposal Kitchen Aid trash compactor Whirlpool icemaker

## **COMPANION WAY**

Carpet Central vacuum Doors to staterooms and head

## **FLYBRIDGE**

Updated fiberglass doors and hardware throughout (teak was replaced) Refinished Murray Brothers helm chairs (x3) Sunbrella cushions for flybridge dinette and seating (U shaped seating forward w/ throw cushions) custom large gas barbecue 2-drawer refrigerator Storage under seating Adjustable table for u shaped seating Rod storage Subzero refrigerator w/ icemaker Rocket launcher off fly bridge aft rail Overhead electronics box Full enclosure- NEW Tuna Tower Fiberglass buggy top DDEC Controls DDEC displays Icom IC-M125 VHF radio Datamarine depth sounder Datamarine speed indicator Rudder position indicator

## **ELECTRONICS**

Garmin radar, 6ft array Garmin 721 GPS/Plotter x 2 Furuno FCV1000 color sounder Robertson AP300DL autopilot Icom IC-M125 VHF radios (2) Furuno FS 50000 SSB radio Furuno weather fax Anschutz gyrocompass Nera SAT COM

## **DECK & HULL**

Updated non skid Bow thruster, electric. Vetus BOW285, 628lbf. Brand new May 2014. Self contained with batteries and battery charger. Underwater lights Pipewelders tuna tower Teak covering boards in cockpit Ideal windlass w/ Fortress anchor, chain and rode Bow pulpit w/ aluminum rails 4 Blade NiBrAl props

## **ELECTRICAL**

Twin Kilopak 27 kW generators 50 amp shore cord Battery chargers Batteries (12v & 24V) 220V 1 phase 60 Hz

---

## ENGINE ROOM

Twin Detroit Diesel 16V92 engines 1450 HP/ 30 hours SMOH (April 2014). Includes one year factory warranty Twin Kilopak 27 kW generators Eskimo ice machine compressor Halon system Baver dive tank compressor Exhaust blowers Dripless shafts Sea strainers Bilge pumps Battery chargers Electrical sub panel Utility Room: located inside cockpit door to engine room Westinghouse split washer/dryer Custom Stainless Steel freezer, 25 sqft of storage. Storage Rod racks

---

## Exclusions

Owner's personal belongings.

---

## Disclaimer

The Company offers the details of this vessel or yacht in good faith but cannot guarantee or warrant the accuracy of this information nor warrant the condition of the vessel. A buyer should instruct his representatives, agents, or his surveyors, to investigate such details as the buyer desires validated. This vessel or yacht is offered subject to prior sale, price change, or withdrawal without notice.

# PHOTOS



**Custom aquarium glass for baitwell**



**New teak covering boards 2**



**New teak covering boards 1**



**Reupholstered helm chairs**



**NEW carbon fiber rocket launcher, holds 10 rods**



**Custom flybridge BBQ 2**



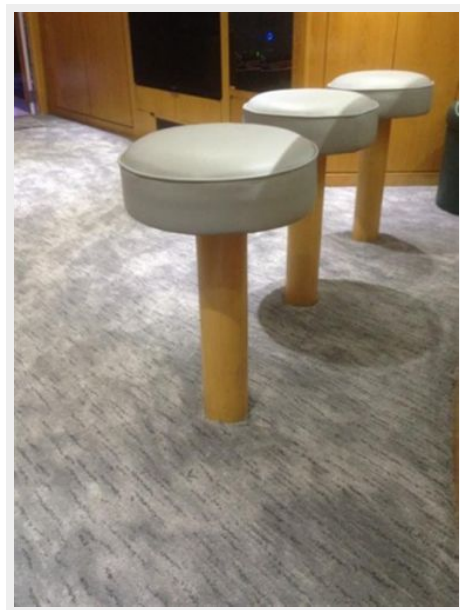
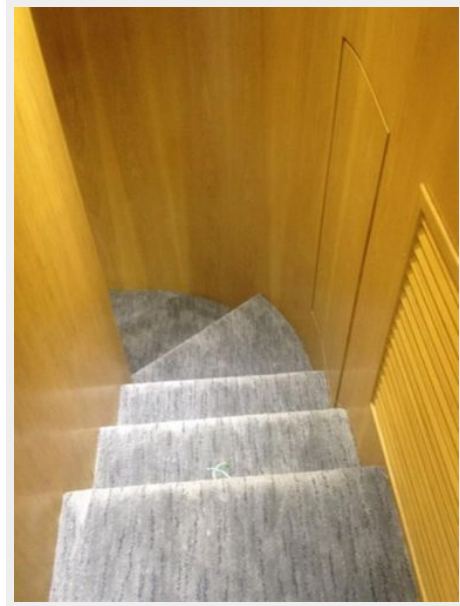
**Custom flybridge BBQ 3**

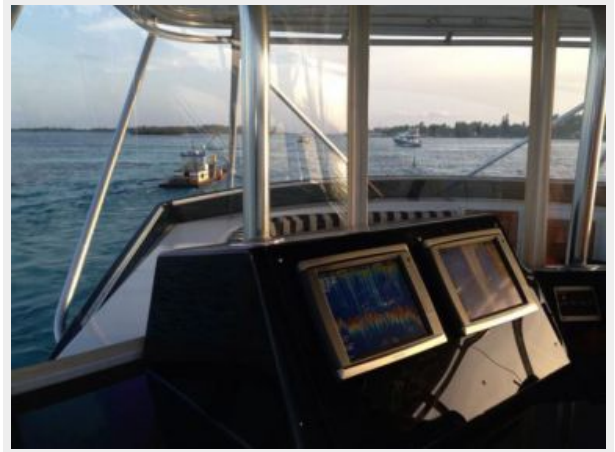
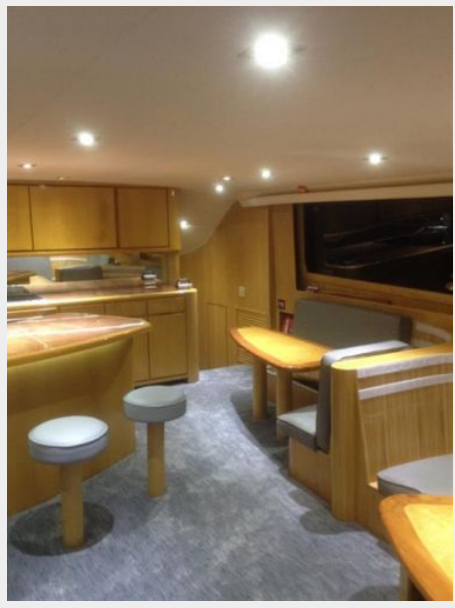


**Two new CableMaster**

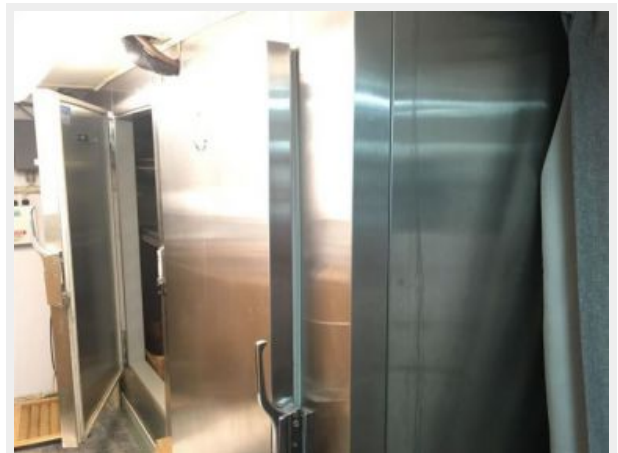
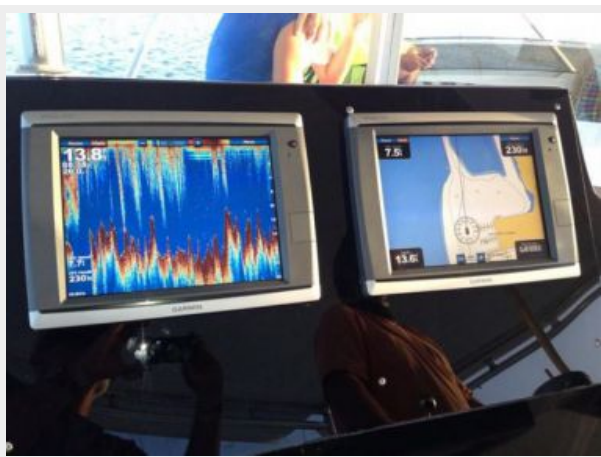


### New JL Audio sound system





Custom freezer 25 sq ft



---

# CONTACTS

---

Andrey Shestakov, leading yacht broker of the sales department of Shestakov Yacht Sales Inc. Shestakov Yacht Sales Inc., the official representative of the Miami/Fort Lauderdale FL headquarters.

---

## Contact details

---

Email: [andrey@shestakovyachtsales.com](mailto:andrey@shestakovyachtsales.com)

Web: [shestakovyachtsales.com/en/](http://shestakovyachtsales.com/en/)

---

## Telephones

---

USA: +1(954)274-4435

---

## Office hours

---

Monday – Saturday: **9:00 - 21:00** EDT

Sunday: **closed**

---

## Address

---



Harbour Towne Marina, 850 NE 3rd St,  
STE 213, Dania, FL 33004