

REEL DEAL — DONZI / ROSCIOLI



Судостроитель: DONZI / ROSCIOLI

Год постройки: 1995

Модель: Катер для спортивной рыбалки

Цена: ЦЕНА ЯХТЫ ПО ЗАПРОСУ

Местонахождение: United States

Длина общая: 72' 0" (21.95m)

Ширина: 18' 7" (5.66m)

Макс. осадка: 5' 11" (1.80m)

Купить **REEL DEAL — DONZI / ROSCIOLI** а также выбрать подходящую вам яхту из нашего каталога яхт вам поможет опытный яхтенный брокер Андрей Шестаков. На сегодняшний день компания **Shestakov Yacht Sales Inc.** имеет большое количество яхт в собственном списке продаж, а также тесно сотрудничает со всеми крупными яхтенными производителями по всему миру.

Для того чтобы купить яхту **REEL DEAL — DONZI / ROSCIOLI** а также проконсультироваться по любому вопросу связанному с покупкой, продажей, чартером яхт позвоните по телефону **+7(918)465-66-44**.

ОГЛАВЛЕНИЕ

ОГЛАВЛЕНИЕ	2
ХАРАКТЕРИСТИКИ	4
Обзор	4
Основная информация	5
Размеры	5
Скорость, вместимость и масса	5
Размещение	5
Корпус и палуба	5
Информация о двигателе	6
ПОДРОБНОЕ ОПИСАНИЕ	7
Features	7
Исключения	10
Отказ от ответственности	10
ФОТОГРАФИИ	11
Custom aquarium glass for baitwell	11
New teak covering boards 1	11
New teak covering boards 2	11
Reupholstered helm chairs	11
NEW carbon fiber rocket launcher, holds 10 rods	12
Custom flybridge BBQ 2	12
Two new CableMaster	12
Custom flybridge BBQ 3	12
New JL Audio sound system	13
Custom freezer 25 sq ft	14
КОНТАКТЫ	15
Контактная информация	15
Телефоны	15
Время работы	15

Адрес

15

ХАРАКТЕРИСТИКИ

Обзор

New in Jan 2017:

- **New JL AUDIO sound system w bluetooth and remote, \$10,000 investment.**
- **New cutlass bearings**
- **Props and shafts aligned**
- **Engines aligned**
- **New prop speed**
- **New hull paint**
- **New boot stripe**
- **New bottom paint**
- **New cockpit non-skid**
- **Five new air conditioners**
- **New teak covering boards**
- **New dog latches on all floor hatches**
- **New aquarium glass on baitwell**
- **Two new Cablemaster reels**
- **Complete refit 2016.**
- **Complete paint job, hull and superstructure**
- **Complete overhaul of main engines, 300 hours SMOH.**
- **Electric bowthruster**
- **Eskimo ice machine**
- **Watermaker**
- **All new electronics**
- **High definition KVH satellite TV**
- **All new enclosures**
- **New interior**
- **New toilets with bidets**
- **... and more!**

Основная информация

Тип судна: Катер для спортивной рыбалки

Модельный год: 1995

Год постройки: 1995

Год обновления: 2015

Вид обновления: Complete

Страна: United States

Верх: Full / Tuna Tower

Открытая палуба мостика: Да

Кубрик: Да

Размеры

Длина общая: 72' 0" (21.95m)

Ширина: 18' 7" (5.66m)

Макс. осадка: 5' 11" (1.80m)

Скорость, вместимость и масса

Вместимость воды: 350 Gallons

Объем топливного бака: 2650 Gallons

Размещение

Всего кают: 3

Всего ком. состава: 3

Койки экипажа: 2

Комм. состав экипажа: 1

Корпус и палуба

Материал корпуса: Fiberglass

Информация о двигателе

Двигатели: 2

Производитель: Detroit Diesel/MTU

Модель: 16V92

Тип двигателя: Inboard

Тип топлива: Diesel

ПОДРОБНОЕ ОПИСАНИЕ

Features

The three stateroom, three head layout, and separate crew quarters for 2, allows for a spacious salon and a highly social and functional galley.

In the cockpit you can swap the Murray Brothers fighting chair with a brand new carbon fiber rocket launcher configuration holding 10 rods.

Both engines have been Detroit Diesel/MTU factory majored complete overhaul.

Additional recently refit items include: Simrad AP28 autopilot (June 2015) Detroit Diesel engines overhauled (April 2014) by Detroit Diesel MACH V freshwater pump (May 2015) w one year warranty, along with new 12V Mate backup freshwater system cockpit paint by Roscioli (October 2014). superstructure paint by Roscioli (October 2014). hull paint by Roscioli (October 2014). waterline by Roscioli (October 2014). nonskid in cockpit, on foredeck, in flybridge. electric Glendinning cablemaster reels and cords x 2 (50amp) bowthruster, Vetus BOW 285 (May 2014) Two New Garmin 7212 GPS units electronics and transducers (April 2014) Garmin 6ft open array radar (April 2014) bluetooth connected sound system, bridge bottom paint A/C serviced and three new air compressors All New galley appliances galley teak and holly wood flooring gas BBQ on flybridge KVH Tracvision, 1080P HD DirecTV satellite receivers interior carpet throughout Leather dinette Leather Salon sofa Samsung Smart TVs in salon and staterooms toilets w bidets in all three bathrooms Carbon fiber look wall coverings in all showers shower and sink faucets in all three bathrooms vinyl floors in all three bathrooms stainless steel sink coverings in all three bathrooms three-sided enclosure with five zipouts and new tracks Sunbrella canvas cushion on dinette on flybridge custom aft sunshade aft canvas cockpit cover and frame Watermaker (1200gpd)

COCKPIT

custom carbon fiber rocket launcher rod holder, 10 rods. Mounts in place of fighting chair aft dinette cushions clear glass on live well aquarium with lights Custom aft sunshade with folding extension hardware for all lockers complete paintjob and non-skid by Roscioli saltwater and freshwater quick disconnects (washdown) (x2) Glendinning Cablemasters reels and cords, 50A each. teak stepping on flybridge ladder Two NEW teak boarding steps (under gunwales, port and starboard) nonskid; on foredeck, in cockpit and in flybridge windshield glass Refinished and repainted windshield Repainted outriggers and hand rails Refrigerator drink box at salon door Murray Brothers fighting chair Cockpit Dinette seating to starboard Transom door w/ gate Transom fish box Ladder to bridge Engine room entrance Teak covering boards Rod holders in covering boards (6) Fish boxes in sole Eskimo ice machine Step box Fresh & salt water wash downs

FISHING EQUIPMENT

Custom carbon fiber rod holder, 10 rods. Mounts in place of fighting chair Pipewelders tuna tower Rupp outriggers w/ center rigger Murray Brothers fighting chair Rod holders

SALON

carpet Samsung TV, built-in, portside Samsung DVD player DirecTV HD-DVR receiver/recorder Denon receiver KVH Tracvision, 1080P bar stools at breakfast bar LED overhead lighting Dinette and Sofa cushions Light pecan wood paneling throughout Coffee table Mirror Electrical panel Salon door Blinds & draped lambrequins Overhead Speakers Entertainment center Designer lamps on end tables

MASTER STATEROOM

carpet Queen size bed w/ NEW bedspread Samsung Flatscreen (April 2014) DirecTV HD receiver NEW Overhead lights, LED Storage under bunk Pecan wood paneling throughout Designer lamps Wood headboard Port holes Overhead hatch Drawer storage Hanging locker Safe Intercom Toshiba phone system 110V outlets En suite head

MASTER STATEROOM HEAD

toilet and bidet Overhead lights, LED CARBON FIBER Wallpaper Wood floors Stainless Steel Sink and Faucets CARBON FIBER wall covering in Stall shower Shower head and faucet 110V outlets

GUEST STATEROOM AFT/PORT:

Offset queen size berth w/ NEW bedspread Wood bulkhead Port hole Designer lamps 110V outlets Drawer space Overhead lights, LED Hanging locker En-suite head

GUEST HEAD

toilet and bidet Overhead lights, LED CARBON FIBER Wallpaper Wood floors Stainless Steel Sink and Faucets CARBON FIBER wall covering in Stall shower Shower head and faucet 110V outlets

GUEST STATEROOM/STARBOARD

Upper/lower single berths Comforter and throw pillows Port hole Carpet Drawer space Hanging locker Overhead lights, LED

GUEST HEAD

toilet and bidet Overhead lights, LED CARBON FIBER Wallpaper Wood floors Stainless Steel Sink and Faucets CARBON FIBER wall covering in Stall shower Shower head and faucet 110V outlets

GALLEY

Overhead lights, LED Marble counter tops- Rose Aurora Gaggenau 4 burner stove top Molded SS sink w/ Grohe faucet GE Microwave Refrigerator/freezer Garbage disposal Kitchen Aid trash compactor Whirlpool icemaker

COMPANION WAY

Carpet Central vacuum Doors to staterooms and head

FLYBRIDGE

Updated fiberglass doors and hardware throughout (teak was replaced) Refinished Murray Brothers helm chairs (x3) Sunbrella cushions for flybridge dinette and seating (U shaped seating forward w/ throw cushions) custom large gas barbecue 2-drawer refrigerator Storage under seating Adjustable table for u shaped seating Rod storage Subzero refrigerator w/ icemaker Rocket launcher off fly bridge aft rail Overhead electronics box Full enclosure- NEW Tuna Tower Fiberglass buggy top DDEC Controls DDEC displays Icom IC-M125 VHF radio Datamarine depth sounder Datamarine speed indicator Rudder position indicator

ELECTRONICS

Garmin radar, 6ft array Garmin 721 GPS/Plotter x 2 Furuno FCV1000 color sounder Robertson AP300DL autopilot Icom IC-M125 VHF radios (2) Furuno FS 50000 SSB radio Furuno weather fax Anschutz gyrocompass Nera SAT COM

DECK & HULL

Updated non skid Bow thruster, electric. Vetus BOW285, 628lbf. Brand new May 2014. Self contained with batteries and battery charger. Underwater lights Pipewelders tuna tower Teak covering boards in cockpit Ideal windlass w/ Fortress anchor, chain and rode Bow pulpit w/ aluminum rails 4 Blade NiBrAl props

ELECTRICAL

Twin Kilopak 27 kW generators 50 amp shore cord Battery chargers Batteries (12v & 24V) 220V 1 phase 60 Hz

ENGINE ROOM

Twin Detroit Diesel 16V92 engines 1450 HP/ 30 hours SMOH (April 2014). Includes one year factory warranty Twin Kilopak 27 kW generators Eskimo ice machine compressor Halon system Baver dive tank compressor Exhaust blowers Dripless shafts Sea strainers Bilge pumps Battery chargers Electrical sub panel Utility Room: located inside cockpit door to engine room Westinghouse split washer/dryer Custom Stainless Steel freezer, 25 sqft of storage. Storage Rod racks

Исключения

При продаже яхты исключаются личные вещи владельца.

Отказ от ответственности

Компания предоставляет описание судна или яхты добросовестно, но не может гарантировать точность этой информации, а также не ручается за техническое состояние. Покупатель должен проинструктировать своих агентов или оценщиков исследовать представленную информацию более подробно, по собственному желанию. Продажа судна или яхты, изменение цены или снятие с продажи будет происходить без предварительного уведомления.

ФОТОГРАФИИ



Custom aquarium glass for baitwell



New teak covering boards 2



New teak covering boards 1



Reupholstered helm chairs



NEW carbon fiber rocket launcher, holds 10 rods



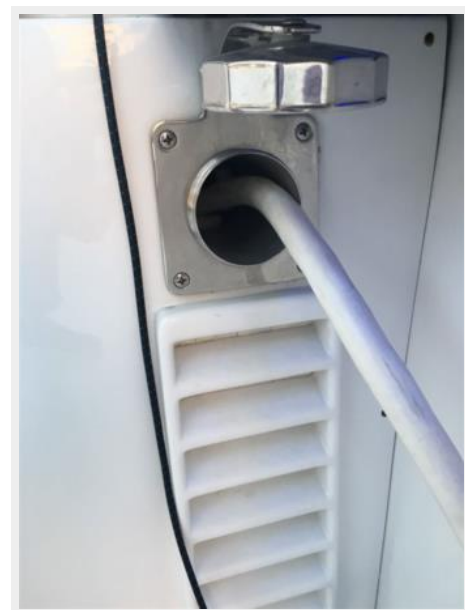
Custom flybridge BBQ 2



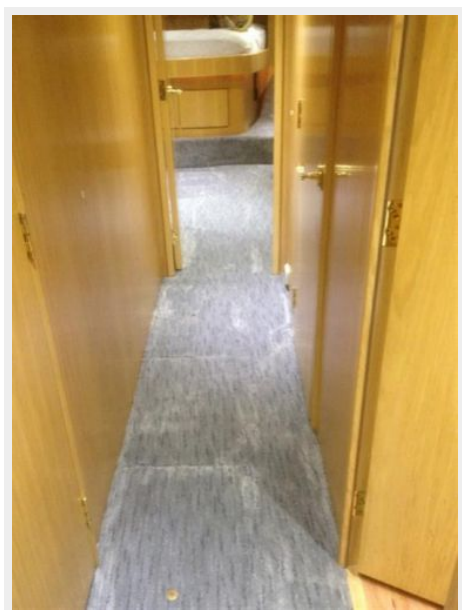
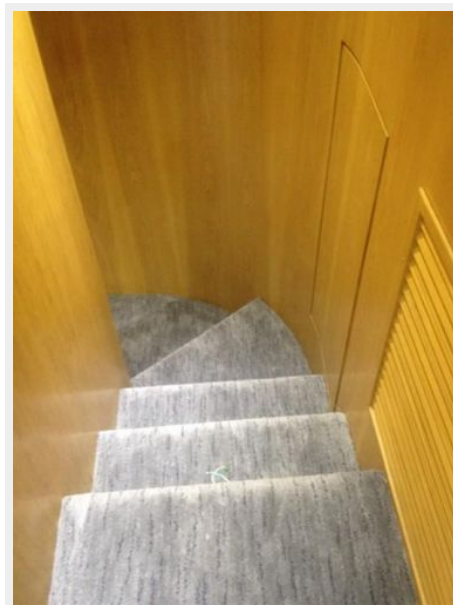
Custom flybridge BBQ 3

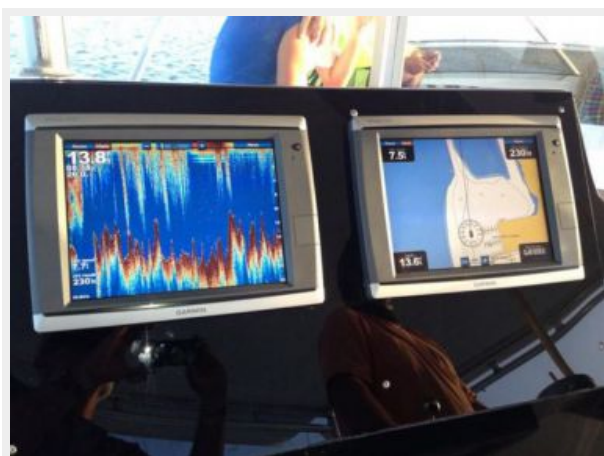
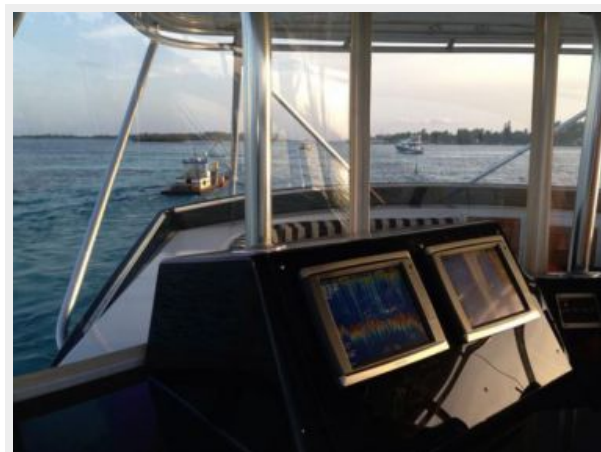
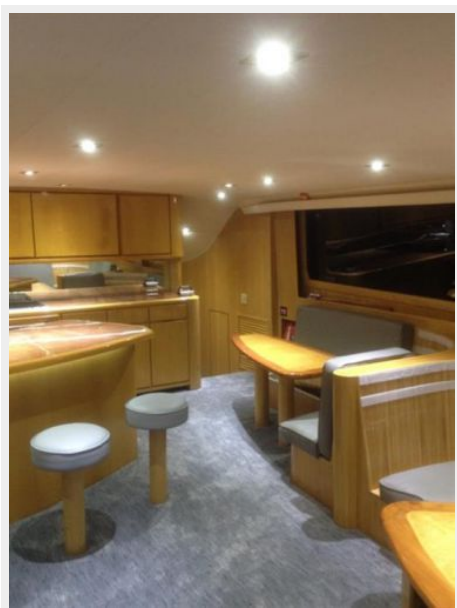


Two new CableMaster

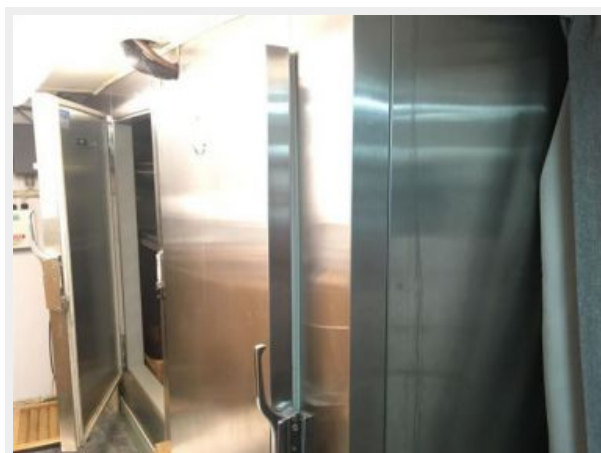


New JL Audio sound system





Custom freezer 25 sq ft



КОНТАКТЫ

Андрей Шестаков (Andrey Shestakov) – ведущий яхтенный брокер отдела продаж яхт и судов компании Shestakov Yacht Sales Inc. Официальный представитель Shestakov Yacht Sales Inc. для русскоговорящих клиентов в центральном офисе компании в Майами/Форт Лодердейл/Флорида/США.

Контактная информация

Email: andrey@shestakovyachtsales.com

Web: shestakovyachtsales.com

Телефоны

Краснодарский край: **+7(918)465-66-44**

США, Майами, Флорида: **+1(954)274-4435**

Время работы

Понедельник – Суббота: **9:00 - 21:00**
EDT

Воскресенье: **Закрето**

Адрес



Harbour Towne Marina, 850 NE 3rd St,
STE 213, Dania, FL 33004