

## NO NAME — OVERMARINE - MANGUSTA



**Судостроитель:**  
OVERMARINE - MANGUSTA

**Год постройки:** 2007

**Модель:** Моторная яхта

**Цена:** ЦЕНА ЯХТЫ ПО ЗАПРОСУ

**Местонахождение:** United States

**Длина общая:** 130' 0" (39.62m)

**Ширина:** 25' 6" (7.77m)

**Макс. осадка:** 4' 6" (1.37m)

**Макс. скорость:** 30 Kts. (35 MPH)

Купить No Name — OVERMARINE - MANGUSTA а также выбрать подходящую вам яхту из нашего каталога яхт вам поможет опытный яхтенный брокер Андрей Шестаков. На сегодняшний день компания Shestakov Yacht Sales Inc. имеет большое количество яхт в собственном списке продаж, а также тесно сотрудничает со всеми крупными яхтенными производителями по всему миру.

Для того чтобы купить яхту No Name — OVERMARINE - MANGUSTA а также проконсультироваться по любому вопросу связанному с покупкой, продажей, чартером яхт позвоните по телефону **+7(918)465-66-44**.

# ОГЛАВЛЕНИЕ

ОГЛАВЛЕНИЕ	2
ХАРАКТЕРИСТИКИ	4
Обзор	4
Основная информация	4
Размеры	4
Скорость, вместимость и масса	5
Размещение	5
Корпус и палуба	5
Информация о двигателе	5
ПОДРОБНОЕ ОПИСАНИЕ	6
Features	6
Исключения	10
Отказ от ответственности	10
ФОТОГРАФИИ	12
Aft Salon	12
Master Stateroom1	12
Aft salon with bar	12
General Arrangement	12
Aft deck jacuzzi	12
Helm	12
Steering station	13
Aft salon3	13
Formal dining1	13
Main salon1	13
Formal dining2	13
Main salon2	13
Forma dining3	14
Stairs to staterooms	14

Forward VIP office	14
Forward VIP1	14
Forward VIP2	14
Forward VIP with pullman	14
Forward VIP3	15
Forward VIP head	15
Starboard VIP	15
Port VIP	15
VIP head	15
Master stateroom office	15
Master head	16
Galley	16
Crew dining	16
Flybridge with bimini	16
Flybridge forward	16
Flybridge dining	16
Bow sunpad1	17
Bow sunpad2	17
Starboard view	17
Engine Room	17
<b>КОНТАКТЫ</b>	<b>18</b>
Контактная информация	18
Телефоны	18
Время работы	18
Адрес	18

# ХАРАКТЕРИСТИКИ

## Обзор

- ZERO SPEED STABILIZER
- & MORE UPGRADES
- VERY MOTIVATED
- Just completed Refit; Exterior and Mechanical
- 1,000 original hours with 1,000hr service completed. Includes 1yr warranty
- Portable remote steering station for use on flybridge or stern
- 30 knots, top end
- 4.5ft draft
- New interior and new exterior cushions
- Atlas system installed, 50/60hz
- 7ft of Headroom throughout entire yacht.
- Main deck jacuzzi

This 130S Overmarine Mangusta megayacht 130 will transport nine owners and guests in luxury. You have the options of the flybridge view, the aft seating and aft salon socializing, the main salon evening dining or, of course, all at the same time.

A total of seven staterooms accommodate owners, guests, and crew.

## Основная информация

Тип судна: Моторная яхта

Подкатегория: Flybridge

Модельный год: 2007

Год постройки: 2007

Год обновления: 2017

Страна: United States

Открытая палуба мостика: Да

## Размеры

Длина общая: 130' 0" (39.62m)

Ширина: 25' 6" (7.77m)

Макс. осадка: 4' 6" (1.37m)

## Скорость, вместимость и масса

---

**Макс. скорость:** 30 Kts. (35 MPH)

**Макс. скорость поворота:** 2050 Kts.

**Вместимость воды:** 1056 Gallons

**Объем топливного бака:** 6340 Gallons

## Размещение

---

**Всего кают:** 4

**Спальные места:** 9

**Каюты экипажа:** 3

**Койки экипажа:** 6

**Спальных мест экипажа:** 6

**Комм. состав экипажа:** 3

## Корпус и палуба

---

**Материал корпуса:** Fiberglass

**Дизайнер корпуса:** Mangusta Overmarine

**Дизайнер экстерьера:** Stefano Righini

**Дизайнер интерьера:** Mangusta in-house

## Информация о двигателе

---

**Двигатели:** 2

**Производитель:** MTU

**Модель:** 16V4000

**Тип двигателя:** Inboard

**Тип топлива:** Diesel

---

# ПОДРОБНОЕ ОПИСАНИЕ

---

## Features

---

This 130 Overmarine Mangusta megayacht will transport nine owners and guests in luxury. You have the options of the flybridge view, the aft seating and aft salon socializing, the main salon evening dining or, of course, all at the same time.

A total of seven staterooms accommodate owners, guests, and crew.

The Master Stateroom is a full beam master with king size island berth. Included is his and her closets, vanity, and full size hutch. The flat screen is centered across from the island berth. Entry to the master stateroom is through a separate TV and Office lounge area. The ensuite head includes his and her sinks and his and her toilets, each one enclosed with it's own frosted glass door. In between the toilet stalls is an enclosed stand up shower with steam bath.

The Forward VIP includes a full size bed, Pullman bunk, ensuite bathroom with stall shower and separate working office.

Port and Starboard guest cabins (between Master and VIP) are mirror image staterooms. Each one includes an island queen berth, mirrored closet and ensuite bathroom with stall shower.

## WALKTHROUGH

Upon entering the **Aft deck** area you have seating for six, entry to the **Aft Salon**, and stairs to the flybridge. On the lower deck, aft of the seating area, you have the Jacuzzi for six.

Upon entering the **Salon** you have lounging and seating to your right and a full bar to your left. Forward, on both sides is access to the helm along with access to the forward salon and formal dining. Entry along the port side also allows for entry below to the main galley and crew area.

Upon entry to the **Mid-deck Salon** you are greeted by the **Formal Dining Area**, serving six. The TV island provides visual separation between the dining area and the salon. Salon area includes port and starboard seating.

Forward, portside, is the stairway to the day head followed by the guest cabins.

You are first greeted by the **Forward VIP** which includes a full size bed, Pullman bunk, ensuite bathroom with stall shower and separate working office.

Aft of that is the main passageway leading to the port and starboard guest cabins and the master stateroom.

The **Master Stateroom** is a full beam master with king size island berth. Included is his and her

closets, vanity, and full size hutch. The flat screen is centered across from the island berth. Entry to the master stateroom is through a separate TV and Office lounge area. The ensuite head includes his and her sinks and his and her toilets, each one enclosed with it's own frosted glass door. In between the toilet stalls is an enclosed stand up shower with steam bath.

**Port and Starboard guest cabins** (between Master and VIP) are mirror image staterooms. Each one includes an island queen berth, mirrored closet and ensuite bathroom with stall shower.

Moving all the way again to the aft deck gives us access to the **Flybridge** area. Included is outdoor dining in the aft area, an electric barbecue, wet bar with icemaker and mini fridge. Starboard side is seating and sunning areas. All of it covered by a new frame and bimini (April 2015).

On the bow is the sunpad with available sunshade.

NEW - Atlas system installed, 50/60hz, with 1yr warranty.

MTU 16V4000 M90 engines and 2 x Kohler 70 EF0Z generators, 70kw each; serviced in June 2014

2 x KAMEWA 71 S II waterjets

Other work recently done on the yacht:

- Antifouling application
- Zinc anodes replacement
- Kamewa jets serviced
- General check of systems
- Annual service of the liferafts
- Annual service of Co2 system
- Annual service of fire extinguishers and safety system
- Bureau Veritas survey (hull and machinery) and the certification is renewed up to 7th June 2017.

## **AFT DECK, SPLIT LEVEL**

- Gorgeous teak decking throughout
- **Jacuzzi, lower level of the aft deck**
- Aft dining for six, upper level
- Covered wing storage, port and starboard, for one jet ski each
- Steps, port and starboard, leading down to Jacuzzi and swim platform
- Portside teak stairs leading to flybridge
- Oversize sunshade

## FLYBRIDGE

- Sliding electric glass door secures flybridge
- Aft dining for 6
- Casual seating for 10, starboard
- Portside station equipped with two burner electric hot plate, twin mini refrigerators, icemaker, and sink
- Sunpad forward
- Bimini top and frame
- Gaggenau Barbecue Grill
- Gaggenau Hotplate
- Gaggenau Oven

## AFT UPPER SALON AND HELM AREA

- Full wet bar, portside
- Enclosed Flatscreen TV, forward, center, rises up for viewing. (Helm area ahead)
- Casual seating, starboard side
- Twin coffee tables
- Port and Starboard Access to helm area

## HELM AREA

- Seating for three
- Humphrey Stabilizer system
- Chart stations port and starboard
- Furuno 1834C Radar Pilot House
- Furuno Black Box FAR 2117 Radar Pilot House
- Furuno FA 150 AIS System
- Furuno Fax 30-NavNet Whip Antenna with FAX-5 Navtex
- Furuno FM 8800 HS-2003 RB 8800 RB 8800 VHF ASN Class A fMO & SMSDSM
- Furuno GD-1920C Radar Pilot House
- Furuno GP37PRO DGPS SBAS/WAAS GP-320B GPS
- Furuno NavNet ETR-6 Depth
- Furuno FS 1570 MF/HF Radiotelephone
- Furuno RD 30 Data Repeater
- Airmar Ultrasonic weather Station Wind Transducer

## LOWER SALON, FORWARD

- Port and Starboard access from Upper Salon



- Main elegant dining for 6
- Center unit houses rising flatscreen TV
- Social seating port and starboard
- Kaliedascope system with Apple Mini computer and remote controls
- Stairway forward leads to staterooms below
- **Day head at bottom of stairs**

## MASTER STATEROOM

- King size island berth, storage underneath
- Full length hutch, starboard
- Vanity, port side
- His and Hers walk in closets
- Nightstands with lamps
- Flatscreen TV w multi function remote
- Vanity, portside

## Master Stateroom Head

- Steam sauna / stand up shower
- His and Hers toilet stalls, with door
- His and Hers sinks.

## Separate Working Office

- Built-in desk and shelving
- Flatscreen
- Sound system
- Two padded crocodile upholstered chairs
- Table

## VIP, FORWARD

- Full size bed
- Pullman bunk
- Flatscreen TV
- Ensuite head with stall shower
- Attached working office with yacht instrument repeaters

## GUEST CABINS

- Located between the Master and VIP cabins
- One cabin portside, the other starboard.

- Island queen berth
- Mirrored closet
- Flatscreen TV
- Ensuite head with stall shower

### **CREW CABINS, lower deck, three cabins**

- Over and under twin size bunks
- Flat screen TV
- Ensuite head with stall shower

### **GALLEY**

- Crew dining area with flatscreen TV
- Four refrigerators, professional style
- Gaggenau oven with four burner electric top
- Stainless steel full size countertop
- Twin basin stainless steel sink
- Zanussi dishwasher x 2
- Microwave/convection oven
- Underfloor Pantry
- Underfloor freezer x 2

### **LAUNDRY ROOM / STORAGE**

- Full size Miele Dryer x 2
- Full size Miele Washer x 2
- Freezers x 2

### **ENGINE ROOM**

- MTU 16V4000 M90 x 2, under 1,000 original hours, 3,650 horsepower Each.
- 2 x Kohler 70 EF0Z generators, 70kw each
- 2 x KAMEWA 71 S II waterjets

---

## **Исключения**

При продаже яхты исключаются личные вещи владельца.

---

## **Отказ от ответственности**

Компания предоставляет описание судна или яхты добросовестно, но не может гарантировать точность этой информации, а также не ручается за техническое

состояние. Покупатель должен проинструктировать своих агентов или оценщиков исследовать представленную информацию более подробно, по собственному желанию. Продажа судна или яхты, изменение цены или снятие с продажи будет происходить без предварительного уведомления.

# ФОТОГРАФИИ

**Master Stateroom1**



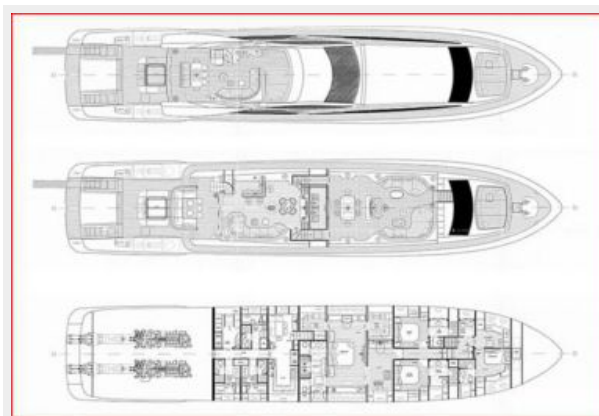
**Aft Salon**



**Aft salon with bar**



**General Arrangement**



**Aft deck jacuzzi**



**Helm**



**Steering station**



**Aft salon3**



**Formal dining1**



**Main salon1**



**Formal dining2**



**Main salon2**





**Forma dining3**



**Stairs to staterooms**



**Forward VIP office**



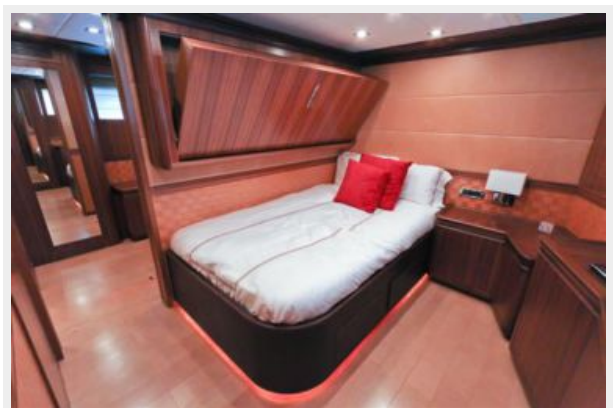
**Forward VIP1**



**Forward VIP2**



**Forward VIP with pullman**



**Forward VIP3**



**Forward VIP head**



**Starboard VIP**



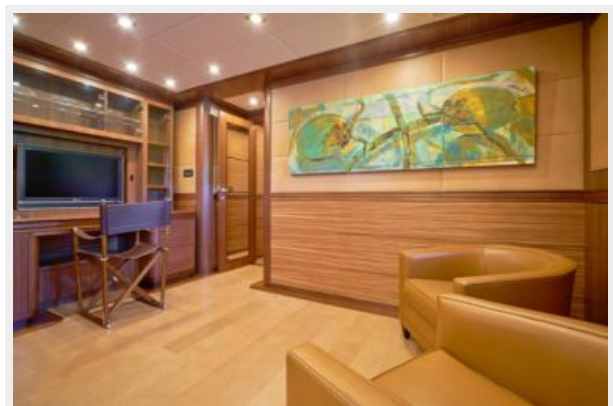
**Port VIP**



**VIP head**



**Master stateroom office**





**Master head**



**Galley**



**Crew dining**



**Flybridge with bimini**



**Flybridge forward**



**Flybridge dining**





**Bow sunpad1**



**Bow sunpad2**



**Starboard view**



**Engine Room**



# КОНТАКТЫ

---

Андрей Шестаков (Andrey Shestakov) – ведущий яхтенный брокер отдела продаж яхт и судов компании Shestakov Yacht Sales Inc. Официальный представитель Shestakov Yacht Sales Inc. для русскоговорящих клиентов в центральном офисе компании в Майами/Форт Лодердейл/Флорида/США.

## Контактная информация

---

Email: [andrey@shestakovyachtsales.com](mailto:andrey@shestakovyachtsales.com)

Web: [shestakovyachtsales.com](http://shestakovyachtsales.com)

## Телефоны

---

Краснодарский край: **+7(918)465-66-44**

США, Майами, Флорида: **+1(954)274-4435**

## Время работы

---

Понедельник – Суббота: **9:00 - 21:00**  
EDT

Воскресенье: **Закрито**

## Адрес

---



Harbour Towne Marina, 850 NE 3rd St,  
STE 213, Dania, FL 33004