

## FISH TALE — VIKING



**Builder:** VIKING

**Year Built:** 2010

**Model:** Sport Fisherman

**Price:** PRICE ON APPLICATION

**Location:** United States

**LOA:** 82' 0" (24.99m)

**Beam:** 22' 4" (6.81m)

**Min Draft:** 5' 6" (1.68m)

**Max Draft:** 5' 6" (1.68m)

**Cruise Speed:** 30 Kts. (35 MPH)

Our experienced yacht broker, Andrey Shestakov, will help you choose and buy a yacht that best suits your needs **Fish Tale — VIKING** from our catalogue. Presently, at Shestakov Yacht Sales Inc., we have a wide variety of yachts available on our sale's list. We also work in close contact with all the big yacht manufacturers from all over the world.

If you would like to buy a yacht **Fish Tale — VIKING** or would like help answering any questions concerning purchasing, selling or chartering a yacht, please call **+1(954)274-4435**

# TABLE OF CONTENTS

TABLE OF CONTENTS	2
SPECIFICATIONS	7
Overview	7
Basic Information	8
Dimensions	8
Speed, Capacities and Weight	8
Accommodations	8
Hull and Deck Information	9
Engine Information	9
DETAILED INFORMATION	10
SALON/DINETTE	10
GALLEY	11
MASTER STATEROOM	11
(3) GUEST & (1) CREW STATEROOMS	12
FLYBRIDGE	13
ELECTRONICS	13
COCKPIT	14
ENGINE ROOM & MECHANICAL EQUIPMENT	15
DECK & HULL	16
Exclusions	16
Disclaimer	16
PHOTOS	17
Salon	17
Galley/Dinette	17
Master Stateroom	17
Flybridge	17
Salon	17
Salon	17

---

Salon	18
Salon	18
Salon	18
Salon	18
Salon	19
Media Room	19
Galley/Dinette	19
Galley/Dinette	19
Galley/Dinette	20
Galley/Dinette	20
Galley/Dinette	20
Master Stateroom	20
Master Stateroom	21
Master Stateroom	21
Master Stateroom	21
Master Stateroom	21
Master Stateroom	21
Master Stateroom	21
Master Stateroom	21
Master Stateroom	22
Master Stateroom	22
Master Stateroom	22
Master Stateroom	22
Forward Port Stateroom	23
Forward Port Stateroom	23
Forward Port Stateroom	23
Forward VIP Stateroom	23
Forward VIP Stateroom	23
Forward VIP Stateroom	23
Forward VIP Stateroom	24

---

---

Forward VIP Stateroom	24
Forward VIP Stateroom	24
Starboard Stateroom	24
Starboard Stateroom	24
Starboard Stateroom	24
Dayhead	25
Starboard Stateroom	25
Dayhead	25
Forward Port Stateroom	25
Forward Port Stateroom	26
Forward Port Stateroom	26
Forward VIP Stateroom	26
Forward VIP Stateroom	26
Forward VIP Stateroom	27
Starboard Stateroom	27
Starboard Stateroom	27
Crew Aft Port Stateroom	27
Crew Aft Port Stateroom	28
Crew Aft Port Stateroom	28
Crew Aft Port Stateroom	28
Crew Aft Port Stateroom	28
Crew Aft Port Stateroom	28
Crew Aft Port Stateroom	29
Crew Aft Port Stateroom	29
Companionway	29
Companionway	29
Companionway	30
Storage Room	30
Storage Room	30
Storage Room	30

---

---

Flybridge	31
Flybridge	31
Flybridge	31
Flybridge	31
Flybridge	31
Flybridge	31
Flybridge	32
Flybridge	32
Flybridge	32
Flybridge	32
Flybridge	32
Flybridge	32
Flybridge	32
Flybridge	32
Flybridge	33
Flybridge	33
Flybridge	33
Flybridge	33
Flybridge	34
Flybridge	34
Flybridge	34
Cockpit	34
Cockpit	34
Cockpit	34
Cockpit	35
Cockpit	35
Cockpit	35
Cockpit	35
Cockpit	35
Engine Room	35
Engine Room	36

---

---

Engine Room	36
Engine Room	36
Engine Room	36
Engine Room	36
Engine Room	36
Engine Room	37
Engine Room	37
Engine Room	37
Engine Room	37
Engine Room	37
Engine Room	37
Engine Room	37
Engine Room	37
Egret Flats Boat	38
Egret Flats Boat	38
Bow	38
Bow	38
Bow	38
Bow	38
CONTACTS	39
Contact details	39
Telephones	39
Office hours	39
Address	39

---

# SPECIFICATIONS

---

## Overview

---

TWO NEW REASONS TO MAKE "FISH TALE" YOUR NEXT VIKING! PRICE REDUCED TO \$4,695,000 and a SUMMER TIME INCENTIVE. Purchase by 8/31/15 and seller will include a CUSTOM TOWER BY Palm Beach Towers.

This is THE OPPORTUNITY for SUMMER 2015 ! ! !

Please note some of the important features on "FishTale"

- Low hours with MTU ESC to March 2017
- Half tower with A/C and enclosure (3 sides)
- Hydraulic davit & flats boat
- Hydraulic Thruster
- Ice Chipper
- Hydraulic outriggers
- Superior electronics
- White Hull
- Underwater lights
- Watermaker (1800gpd)
- Center rigger
- Dual generators
- Underwater exhaust
- Release fighting chair
- Teaser reels
- Stidd helm chairs
  
- Full beam master stateroom with custom layout
- All leather (real leather) salon & dinette seating
- Channel etched glass backslpash
- Custom display rod locker
- Custom bar stools
- Granite counter tops
- Gloss teakwood throughout
- Custom large dinette design (superior)
- Opening portlights (portholes) in master stateroom that provide emergency exit escape

---

## Basic Information

---

**Category:** Sport Fisherman

**Sub Category:** Sport Fisherman

**Model Year:** 2010

**Year Built:** 2010

**Country:** United States

**Fly Bridge:** Yes

---

## Dimensions

---

**LOA:** 82' 0" (24.99m)

**LWL:** 71' 10" (21.89m)

**Beam:** 22' 4" (6.81m)

**Min Draft:** 5' 6" (1.68m)

**Max Draft:** 5' 6" (1.68m)

---

## Speed, Capacities and Weight

---

**Cruise Speed:** 30 Kts. (35 MPH)

**Cruise Speed RPM:** 2100 Kts.

**Displacement:** 162250 Pounds

**Water Capacity:** 450 Gallons

**Holding Tank:** 280 Gallons

**Fuel Capacity:** 3395 Gallons

---

## Accommodations

---

**Total Cabins:** 4

**Total Berths:** 5

**Sleeps:** 8

**Total Heads:** 6

**Captain Cabin:** True

**Crew Cabin:** 1

**Crew Berths:** 1

**Crew Sleeps:** 2

**Crew Heads:** 1



---

## Hull and Deck Information

---

**Hull Material:** Fiberglass

**Hull Configuration:** Modified Deep Vee

**Hull Color:** White

---

## Engine Information

---

**Engines:** 2

**Manufacturer:** MTU

**Model:** 16V 2000 M93

**Engine Type:** Inboard

**Fuel Type:** Diesel

---

# DETAILED INFORMATION

---

## SALON/DINETTE

---

- Custom Cocktail Table
- Oversized Dinette Table and Seating
- Custom Teak Backer for Dinette
- 60" Flat Screen TV (Pioneer Elite)
- Custom Dinette/Galley Layout
- Genuine Leather Seating
- Day head:Mirrored Ceiling
- Granite in Galley and Day Head
- Overhead Teak Handrail
- 110V Outlet Under Dinette Table
- Custom Rod Locker (Pantry Area)
- Custom Bar Stools (4)
- 110V Outlet: Cabinet Between Dinette & Sofa
- Amtico Flooring Under Dinette
- Custom Headliner Material
- Upgraded Sofa & Dinette Seating
- Leather EZ chair (swivel)
- Carpet Runner
- Two Pedestals on Large Dining Table
- Lamp on Stbd. Credenza
- Air Conditioning
- Blinds and Carpeting
- Amtico Flooring; Entrance, Dinette, Galley
- Day Head
- Teak Interior/Gloss Finish
- Ice Maker (clear)
- Bose Lifestyle 48 w/Surround Sound
- lambrequins
- Electric Salon Door
- L-sofa w/Storage

### Companionway:

- Lights on Each Step Riser
- Bound Carpet on Steps w/Exposed Wood Sides
- Washer & Dryer in Cabinet
- Vertical Teak Strips (wall panels)
- Teak Handrail

---

## GALLEY

---

- Custom Channel Glass Backsplash (lighted)
- Granite Counter Tops
- Custom Larger Countertop & Storage
- 4 gang Outlet Underside of Upper Cabinets
- Dishwasher
- Trash Compactor
- Double S/S Sink w/ Disposal
- Large Pantry w/Storage drawers
- 4 Burner Surface Mount Range
- Microwave/Convection Oven
- Sub-Zero Drawer Refrigerator (2)
- Sub-Zero Drawer Freezer (1)

---

## MASTER STATEROOM

---

- Custom Layout W/P & S Aft Closets
- Opening Port Lights (portholes) that provide emergency exit escape
- Custom Wallpaper
- Upgraded Mattress
- Maximum Sound Insulation
- Double Bulkhead
- Safe (Webarto – Model #30)
- Full Beam Midship
- King Size Bed (Walk around)
- Indirect Rope Lighting
- Vanity/Desk Area (with w/stool)
- TV 46" Flat Screen
- (2) End Tables (built in)
- Air Conditioning
- Gloss Finish Teak
- Storage Drawer Under Bed

### Master Stateroom Head

- Mirror Around Vanity Insert
- Frameless Shower Door
- Mirror Ceiling
- Custom Wallpaper
- Granite Counter Top
- Large Stall Shower
- Amtico Flooring

- Satin-Nickel Hardware
- Sealand Vacu-Flush Head
- Exhaust Fan
- (2) Sinks
- Air Conditioning

---

## **(3) GUEST & (1) CREW STATEROOMS**

---

### (3) Guest:

- Forward/Center-Line Queen Bed w/Storage Under
- Port-Forward/Queen Bed (walkaround) w/Storage Under
- Starboard-Mid/Twin Beds w/Center Isle

### (1) Crew:

- Port-Mid/Upper & Lower Berths w/desk

## **ALL**

- Hanging Lockers
- Custom Wallpaper
- Flat Screen TV's
- Upgraded Mattresses
- Teak Anchor Locker Bulkhead (fwd. only)
- Teak Top Cabinets
- Mattress Gap Allowance for Tucking Sheets
- Stereo Speakers
- Storage Drawers
- Carpeting
- Air Conditioning
- Indirect Lighting
- Reading Lights
- Gloss Finish Teak

## **EN-SUITE HEADS**

- Mirrored Ceiling
- Custom Wallpaper
- Granite Vanity
- Mirrored Med. Cabinet Wall
- Sealand Vacu-Flush Head
- Stall Shower
- Amtico Flooring
- Brushed Nickel Hardware

---

## FLYBRIDGE

---

- Helm Air Conditioning
- (3) Stidd Helm Chairs w/covers
- White Powder Coated Rails & Hard Top Frame
- Single Lever Control Handles w/Thruster Buttons
- Additional Helm Console Ventilation
- Grab Rails P&S Sides of console
- Safety Hatch Over Ladder w/Rail
- Cabinet w/Two Drawers & Water Spigot
- PBT Molded Hardtop
- (8) Recessed (3 color) Hardtop Lights
- Molded Quartz Light
- (8) Rod Holders (aft rail)
- Enclosure (3 sided) EZ2CY
- Enclosure Air Vents Forward
- Rupp 47' Big-Rigg Outrigger (Hydraulic)
- Rupp Center Rigger
- Powder Coated Horns (on hardtop)
- Power Drop Down Overhead Elec. Box
- Miya Epouch HD US9 Elec. Teaser Reels
- Molded SAT Dome Mounts (2)
- Drip Dry Foam (cushions)
- Battery System for F/B Electronics
- Center Console Walk-Around Helm
- Electric Trolling Valves
- Freezer Box (top loading)
- Recessed Electronics Boxes
- Sink w/Spray Head
- Jump seat Backrest (removable)
- Stereo Speakers
- P&S and Forward Lounge Seating w/Storage
- Power Assist Steering
- Moritz Octoplex Control Monitor
- SS Springs for Bench Seat Lids
- Refrigerated Top Loading Drink Box

---

## ELECTRONICS

---

- Furuno Navnet 96 NM Radar, Plotter, Sounder, Weather
- Backup Sounder
- (3) Display Screens
- Autopilot (Simrad)

- Plotter #2 (Northstar)
- Four (4) Display Screens
- Northstar Plotter
- SAT Phone (KVH)
- (5) Panasonic Phone System
- Fax/Printer/Scanner/Copier
- (3) Cameras (Elbex Color Ball)
- Furuno RD 30 Depth and Temp.
- SAT TV KVHTrackvision M7
- (5) DDS Hi Def Receivers
- HD Control (Salon & MSR)
- A/V UPS Backup
- (1) Dummy Dome (KVH)
- SAT Radio (Sirius)
- VHF (ICOM M604) Radio w/Overhead Speaker
- Overhead Mic in Radio Box
- Icom Command Mic (Salon & Cockpit)
- Stereo (Clarion) w/Amplifier
- Alarm System (Magellan Premier) w/Remote Video Monitoring System
- (2) ACR Spotlights
- Underwater Lights (6)

## COCKPIT

---

- Window & Light for Transom Livewell
- Ice Chipper (to C/P Sole Box)
- (6) Rod Holders in Haunches
- E/R Door Lock
- Coaming Pads
- (2)24V Outlets & (2)12V Outlets
- Release Fighting Chair
- Grab Rails Inside Transom Door
- Freezer in Port Mezzanine Step
- Split Lid for Fishbox
- Seawater Supply for On-Deck Livewell
- Mezzanine Armrests w/cup holders
- Blue/White LED Rope Lights
- Blue/White C/P Overhang Lights
- Threaded Scupper Grates
- (8)Rupp Revolver Rod Holders
- (2)Step Boxes
- Quick Connect for Oil Change
- Cockpit Storage Cover

- P & S Cabinets Under Gunwale
- (2)100 Amp Glendenning Cablemasters
- Drop-In In-Deck Storage Box
- Extended F/B Overhang for Shade
- Fresh & Salt Water Washdowns
- Mezzanine
- Tackle Cabinet W/Drawers
- Bait Freezer (large)
- Fish Box (in deck, insulated)
- Refrigerator Drink Box (in mezzanine step)
- Stereo Speakers
- Storage Locker
- Transom Mounted Fishbox
- Walk Through Transom Door w/Lift Gate
- Y-Valve to Fill Water Tank
- Y-Valve Salt & Fresh Water Wash Down

---

## ENGINE ROOM & MECHANICAL EQUIPMENT

---

- Watermaker (1800 gallons per day)
- (2)Onan 32KW Generators
- (2)MTU 16V 2000 M93 @ 2400MHP
- Extended MTU Service (to 3/20/17)
- Oil Change Line to Cockpit
- Dual Power Steering Pumps
- Headhunter Fresh Water Pump
- 110V & 220V Elec. Outlets
- (2)Tool Boxes w/16" Wide Drawers
- (2)Seawater Pumps (in parallel)
- All Head Blowers on ISO Dampeners
- A/C (2) 5 Ton Chilled Water Units
- Bow Thruster (Hydraulic)
- Delta-T Ventilation System
- Fire Suppression System
- Fresh Water Filter
- Fuel Priming Pumps
- Fuel Transfer & Management System
- Hydraulic Bilge Pump
- Oil Changing System
- PEX Plumbing W/Manifold System
- Props (class "S"; Cambered Blade Sections)
- Raycor Fuel/Water Separators
- Dripless Shaft Seals

- Water Heater (40 Gallon)
- Charles Shore Power Combiner
- Magnetic Switches for Bilge Lights
- Voltage Stabilizer Isolation Transformers
- 110V Water Pump
- Water Inlet Can Fill Water Tank, Feed Watermaker, or Pressurize System

---

## DECK & HULL

---

- Bow Pulpit
- Windlass: Lewmar V6 SS Hydraulic
- Davit: Hydraulic Lift & Rotation (2200 lbs)
- Black Mask (forward)
- Prop Pockets
- Trim Tabs (with recessed covers)
- Fresh Water Washdown (anchor locker)
- SS Gas Spring (anchor locker hatch)
- Underwater Lights (6)
- White Hull
- Black Bottom Paint
- Fiberglass Thru-Hulls
- Underwater Exhaust
- Burgee Staff (bow rail)
- Fuel Fills (both P & S)
- Sliding Fender Tracks P & S
- Flats Boat: 18' Egret w/1500HP Yamaha 4-Stroke
- Polished Plow Anchor w/1200' Rope and 75' chain
- Stainless Plate Between Pulpit Liner & Chain
- Handrails (follow window line & wrap around front of house)
- Switlick 6-Man Life Raft

---

## Exclusions

---

Owner's personal belongings.

---

## Disclaimer

---

The Company offers the details of this vessel or yacht in good faith but cannot guarantee or warrant the accuracy of this information nor warrant the condition of the vessel. A buyer should instruct his representatives, agents, or his surveyors, to investigate such details as the buyer desires validated. This vessel or yacht is offered subject to prior sale, price change, or withdrawal without notice.



# PHOTOS

**Salon**



**Galley/Dinette**



**Master Stateroom**



**Flybridge**



**Salon**



**Salon**



Salon



Salon



Salon



Salon



Salon



Media Room



Galley/Dinette



Galley/Dinette



**Galley/Dinette**



**Galley/Dinette**



**Galley/Dinette**



**Master Stateroom**



**Master Stateroom**



**Master Stateroom**



**Master Stateroom**



**Master Stateroom**



**Master Stateroom**



**Master Stateroom**



**Master Stateroom**



**Master Stateroom**



**Master Stateroom**



**Master Stateroom**



**Forward Port Stateroom**



**Forward Port Stateroom**



**Forward Port Stateroom**



**Forward VIP Stateroom**



**Forward VIP Stateroom**



**Forward VIP Stateroom**



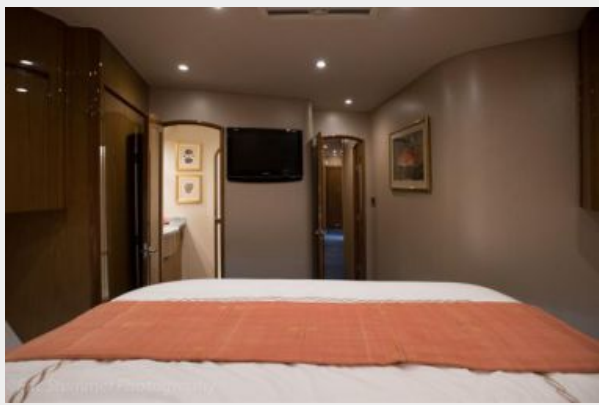
**Forward VIP Stateroom**



**Forward VIP Stateroom**



**Forward VIP Stateroom**



**Starboard Stateroom**



**Starboard Stateroom**



**Starboard Stateroom**





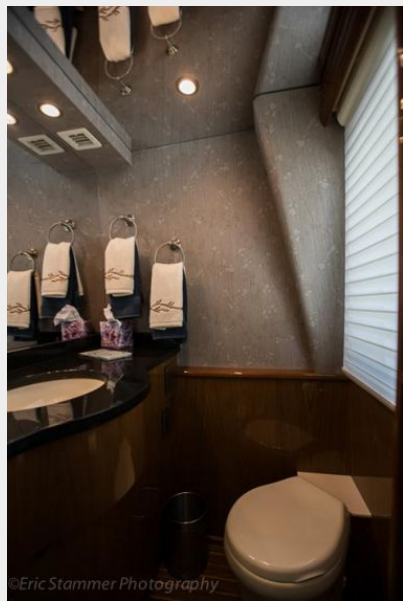
**Starboard Stateroom**



**Dayhead**



**Dayhead**



**Forward Port Stateroom**



**Forward Port Stateroom**



**Forward Port Stateroom**



**Forward VIP Stateroom**



**Forward VIP Stateroom**



### Forward VIP Stateroom



### Starboard Stateroom



### Starboard Stateroom



### Crew Aft Port Stateroom



**Crew Aft Port Stateroom**



**Crew Aft Port Stateroom**



**Crew Aft Port Stateroom**



**Crew Aft Port Stateroom**



**Crew Aft Port Stateroom**



**Crew Aft Port Stateroom**



**Companionway**



**Companionway**



### Companionway



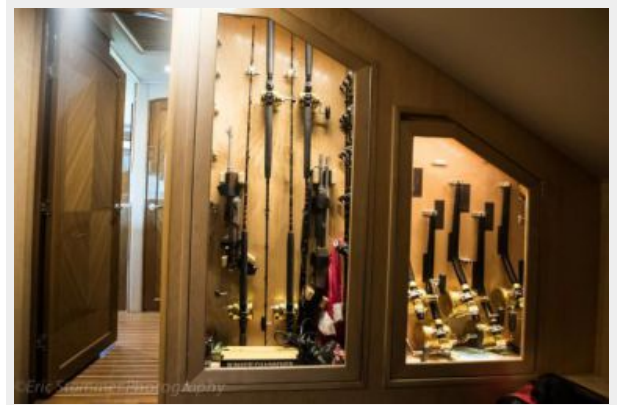
### Storage Room



### Storage Room



### Storage Room



**Flybridge**



**Flybridge**



**Flybridge**



**Flybridge**



**Flybridge**



**Flybridge**



**Flybridge**



**Flybridge**



**Flybridge**



**Flybridge**



**Flybridge**



**Flybridge**





**Flybridge**



**Flybridge**



**Flybridge**

**Flybridge**



**Flybridge**



**Flybridge**



**Flybridge**



**Cockpit**



**Cockpit**



**Cockpit**



**Cockpit**



**Cockpit**



**Cockpit**



**Cockpit**



**Cockpit**



**Engine Room**



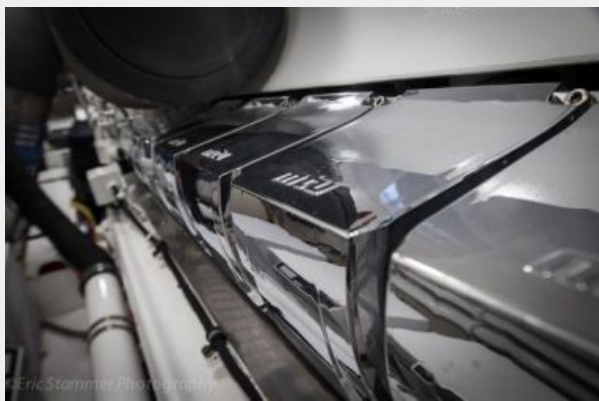
**Engine Room**



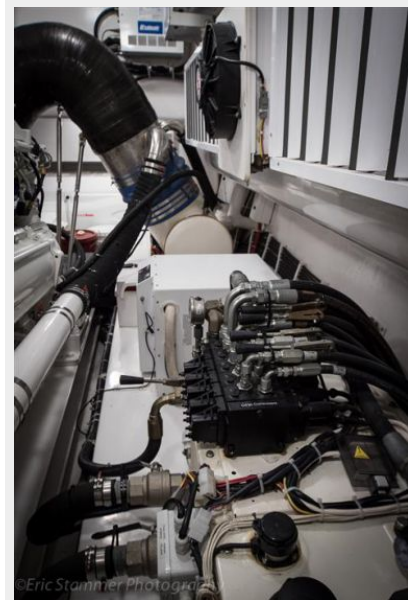
**Engine Room**



**Engine Room**



**Engine Room**



**Engine Room**



**Engine Room**



Engine Room



Engine Room



Engine Room



Engine Room



Engine Room



Engine Room



**Egret Flats Boat**



**Egret Flats Boat**



**Bow**



**Bow**



**Bow**



**Bow**



# CONTACTS

---

Andrey Shestakov, leading yacht broker of the sales department of Shestakov Yacht Sales Inc. Shestakov Yacht Sales Inc., the official representative of the Miami/Fort Lauderdale FL headquarters.

## Contact details

---

Email: [andrey@shestakovyachtsales.com](mailto:andrey@shestakovyachtsales.com)

Web: [shestakovyachtsales.com/en/](http://shestakovyachtsales.com/en/)

## Telephones

---

USA: +1(954)274-4435

## Office hours

---

Monday – Saturday: **9:00 - 21:00** EDT

Sunday: **closed**

## Address

---



Harbour Towne Marina, 850 NE 3rd St,  
STE 213, Dania, FL 33004