

FISH TALE — VIKING



Судостроитель: VIKING

Год постройки: 2010

Модель: Катер для спортивной рыбалки

Цена: **ЦЕНА ЯХТЫ ПО ЗАПРОСУ**

Местонахождение: United States

Длина общая: 82' 0" (24.99m)

Ширина: 22' 4" (6.81m)

Мин. осадка: 5' 6" (1.68m)

Макс. осадка: 5' 6" (1.68m)

Крейс. скорость: 30 Kts. (35 MPH)

Купить **Fish Tale — VIKING** а также выбрать подходящую вам яхту из нашего каталога яхт вам поможет опытный яхтенный брокер Андрей Шестаков. На сегодняшний день компания **Shestakov Yacht Sales Inc.** имеет большое количество яхт в собственном списке продаж, а также тесно сотрудничает со всеми крупными яхтенными производителями по всему миру.

Для того чтобы купить яхту **Fish Tale — VIKING** а также проконсультироваться по любому вопросу связанному с покупкой, продажей, чартером яхт позвоните по телефону **+7(918)465-66-44**.

ОГЛАВЛЕНИЕ

ОГЛАВЛЕНИЕ	2
ХАРАКТЕРИСТИКИ	7
Обзор	7
Основная информация	8
Размеры	8
Скорость, вместимость и масса	8
Размещение	8
Корпус и палуба	9
Информация о двигателе	9
ПОДРОБНОЕ ОПИСАНИЕ	10
SALON/DINETTE	10
GALLEY	11
MASTER STATEROOM	11
(3) GUEST & (1) CREW STATEROOMS	12
FLYBRIDGE	13
ELECTRONICS	13
СОСРПИТ	14
ENGINE ROOM & MECHANICAL EQUIPMENT	15
DECK & HULL	16
Исключения	16
Отказ от ответственности	16
ФОТОГРАФИИ	18
Salon	18
Galley/Dinette	18
Master Stateroom	18
Flybridge	18
Salon	18
Salon	18

Salon	19
Salon	19
Salon	19
Salon	19
Salon	20
Media Room	20
Galley/Dinette	20
Galley/Dinette	20
Galley/Dinette	21
Galley/Dinette	21
Galley/Dinette	21
Master Stateroom	21
Master Stateroom	22
Master Stateroom	22
Master Stateroom	22
Master Stateroom	22
Master Stateroom	22
Master Stateroom	22
Master Stateroom	22
Master Stateroom	23
Master Stateroom	23
Master Stateroom	23
Master Stateroom	23
Forward Port Stateroom	24
Forward Port Stateroom	24
Forward Port Stateroom	24
Forward VIP Stateroom	24
Forward VIP Stateroom	24
Forward VIP Stateroom	24
Forward VIP Stateroom	25

Forward VIP Stateroom	25
Forward VIP Stateroom	25
Starboard Stateroom	25
Starboard Stateroom	25
Starboard Stateroom	25
Dayhead	26
Starboard Stateroom	26
Dayhead	26
Forward Port Stateroom	26
Forward Port Stateroom	27
Forward Port Stateroom	27
Forward VIP Stateroom	27
Forward VIP Stateroom	27
Forward VIP Stateroom	28
Starboard Stateroom	28
Starboard Stateroom	28
Crew Aft Port Stateroom	28
Crew Aft Port Stateroom	29
Crew Aft Port Stateroom	29
Crew Aft Port Stateroom	29
Crew Aft Port Stateroom	29
Crew Aft Port Stateroom	29
Crew Aft Port Stateroom	30
Crew Aft Port Stateroom	30
Companionway	30
Companionway	30
Companionway	31
Storage Room	31
Storage Room	31
Storage Room	31

Flybridge	32
Flybridge	32
Flybridge	32
Flybridge	32
Flybridge	32
Flybridge	32
Flybridge	33
Flybridge	33
Flybridge	33
Flybridge	33
Flybridge	33
Flybridge	33
Flybridge	33
Flybridge	33
Flybridge	34
Flybridge	34
Flybridge	34
Flybridge	34
Flybridge	35
Flybridge	35
Flybridge	35
Cockpit	35
Cockpit	35
Cockpit	35
Cockpit	36
Cockpit	36
Cockpit	36
Cockpit	36
Cockpit	36
Cockpit	36
Engine Room	36
Engine Room	37

Engine Room	37
Engine Room	37
Engine Room	37
Engine Room	37
Engine Room	37
Engine Room	38
Engine Room	38
Engine Room	38
Engine Room	38
Engine Room	38
Engine Room	38
Engine Room	38
Engine Room	38
Egret Flats Boat	39
Egret Flats Boat	39
Bow	39
Bow	39
Bow	39
Bow	39
КОНТАКТЫ	40
Контактная информация	40
Телефоны	40
Время работы	40
Адрес	40

ХАРАКТЕРИСТИКИ

Обзор

TWO NEW REASONS TO MAKE "FISH TALE" YOUR NEXT VIKING! PRICE REDUCED TO \$4,695,000 and a SUMMER TIME INCENTIVE. Purchase by 8/31/15 and seller will include a CUSTOM TOWER BY Palm Beach Towers.

This is THE OPPORTUNITY for SUMMER 2015 ! ! !

Please note some of the important features on "FishTale"

- Low hours with MTU ESC to March 2017
- Half tower with A/C and enclosure (3 sides)
- Hydraulic davit & flats boat
- Hydraulic Thruster
- Ice Chipper
- Hydraulic outriggers
- Superior electronics
- White Hull
- Underwater lights
- Watermaker (1800gpd)
- Center rigger
- Dual generators
- Underwater exhaust
- Release fighting chair
- Teaser reels
- Stidd helm chairs

- Full beam master stateroom with custom layout
- All leather (real leather) salon & dinette seating
- Channel etched glass backslpash
- Custom display rod locker
- Custom bar stools
- Granite counter tops
- Gloss teakwood throughout
- Custom large dinette design (superior)
- Opening portlights (portholes) in master stateroom that provide emergency exit escape

Основная информация

Тип судна: Катер для спортивной рыбалки

Подкатегория: Катер для спортивной рыбалки

Модельный год: 2010

Год постройки: 2010

Страна: United States

Открытая палуба мостика: Да

Размеры

Длина общая: 82' 0" (24.99m)

Длина по ватерлинии: 71' 10" (21.89m)

Ширина: 22' 4" (6.81m)

Мин. осадка: 5' 6" (1.68m)

Макс. осадка: 5' 6" (1.68m)

Скорость, вместимость и масса

Крейс. скорость: 30 Kts. (35 MPH)

Крейсерская скорость поворота: 2100 Kts.

Водоизмещение: 162250 Pounds

Вместимость воды: 450 Gallons

Вместимость сточного бака: 280 Gallons **Объем топливного бака:** 3395 Gallons

Размещение

Всего кают: 4

Всего коек: 5

Спальные места: 8

Всего ком. состава: 6

Каюта капитана: Да

Каюты экипажа: 1

Койки экипажа: 1

Спальных мест экипажа: 2

Комм. состав экипажа: 1

Корпус и палуба

Материал корпуса: Fiberglass

Комплектация корпуса: Modified Deep Vee

Цвет корпуса: White

Информация о двигателе

Двигатели: 2

Производитель: MTU

Модель: 16V 2000 M93

Тип двигателя: Inboard

Тип топлива: Diesel

ПОДРОБНОЕ ОПИСАНИЕ

SALON/DINETTE

- Custom Cocktail Table
- Oversized Dinette Table and Seating
- Custom Teak Backer for Dinette
- 60" Flat Screen TV (Pioneer Elite)
- Custom Dinette/Galley Layout
- Genuine Leather Seating
- Day head: Mirrored Ceiling
- Granite in Galley and Day Head
- Overhead Teak Handrail
- 110V Outlet Under Dinette Table
- Custom Rod Locker (Pantry Area)
- Custom Bar Stools (4)
- 110V Outlet: Cabinet Between Dinette & Sofa
- Amtico Flooring Under Dinette
- Custom Headliner Material
- Upgraded Sofa & Dinette Seating
- Leather EZ chair (swivel)
- Carpet Runner
- Two Pedestals on Large Dining Table
- Lamp on Stbd. Credenza
- Air Conditioning
- Blinds and Carpeting
- Amtico Flooring; Entrance, Dinette, Galley
- Day Head
- Teak Interior/Gloss Finish
- Ice Maker (clear)
- Bose Lifestyle 48 w/Surround Sound
- Lambrequins
- Electric Salon Door
- L-sofa w/Storage

Companionway:

- Lights on Each Step Riser
- Bound Carpet on Steps w/Exposed Wood Sides
- Washer & Dryer in Cabinet
- Vertical Teak Strips (wall panels)
- Teak Handrail

GALLEY

- Custom Channel Glass Backsplash (lighted)
- Granite Counter Tops
- Custom Larger Countertop & Storage
- 4 gang Outlet Underside of Upper Cabinets
- Dishwasher
- Trash Compactor
- Double S/S Sink w/ Disposal
- Large Pantry w/Storage drawers
- 4 Burner Surface Mount Range
- Microwave/Convection Oven
- Sub-Zero Drawer Refrigerator (2)
- Sub-Zero Drawer Freezer (1)

MASTER STATEROOM

- Custom Layout W/P & S Aft Closets
- Opening Port Lights (portholes) that provide emergency exit escape
- Custom Wallpaper
- Upgraded Mattress
- Maximum Sound Insulation
- Double Bulkhead
- Safe (Webarto – Model #30)
- Full Beam Midship
- King Size Bed (Walk around)
- Indirect Rope Lighting
- Vanity/Desk Area (with w/stool)
- TV 46" Flat Screen
- (2) End Tables (built in)
- Air Conditioning
- Gloss Finish Teak
- Storage Drawer Under Bed

Master Stateroom Head

- Mirror Around Vanity Insert
- Frameless Shower Door
- Mirror Ceiling
- Custom Wallpaper
- Granite Counter Top
- Large Stall Shower
- Amtico Flooring

- Satin-Nickel Hardware
- Sealand Vacu-Flush Head
- Exhaust Fan
- (2) Sinks
- Air Conditioning

(3) GUEST & (1) CREW STATEROOMS

(3) Guest:

- Forward/Center-Line Queen Bed w/Storage Under
- Port-Forward/Queen Bed (walkaround) w/Storage Under
- Starboard-Mid/Twin Beds w/Center Isle

(1) Crew:

- Port-Mid/Upper & Lower Berths w/desk

ALL

- Hanging Lockers
- Custom Wallpaper
- Flat Screen TV's
- Upgraded Mattresses
- Teak Anchor Locker Bulkhead (fwd. only)
- Teak Top Cabinets
- Mattress Gap Allowance for Tucking Sheets
- Stereo Speakers
- Storage Drawers
- Carpeting
- Air Conditioning
- Indirect Lighting
- Reading Lights
- Gloss Finish Teak

EN-SUITE HEADS

- Mirrored Ceiling
- Custom Wallpaper
- Granite Vanity
- Mirrored Med. Cabinet Wall
- Sealand Vacu-Flush Head
- Stall Shower
- Amtico Flooring
- Brushed Nickel Hardware

FLYBRIDGE

- Helm Air Conditioning
- (3) Stidd Helm Chairs w/covers
- White Powder Coated Rails & Hard Top Frame
- Single Lever Control Handles w/Thruster Buttons
- Additional Helm Console Ventilation
- Grab Rails P&S Sides of console
- Safety Hatch Over Ladder w/Rail
- Cabinet w/Two Drawers & Water Spigot
- PBT Molded Hardtop
- (8) Recessed (3 color) Hardtop Lights
- Molded Quartz Light
- (8) Rod Holders (aft rail)
- Enclosure (3 sided) EZ2CY
- Enclosure Air Vents Forward
- Rupp 47' Big-Rigg Outrigger (Hydraulic)
- Rupp Center Rigger
- Powder Coated Horns (on hardtop)
- Power Drop Down Overhead Elec. Box
- Miya Epouch HD US9 Elec. Teaser Reels
- Molded SAT Dome Mounts (2)
- Drip Dry Foam (cushions)
- Battery System for F/B Electronics
- Center Console Walk-Around Helm
- Electric Trolling Valves
- Freezer Box (top loading)
- Recessed Electronics Boxes
- Sink w/Spray Head
- Jump seat Backrest (removable)
- Stereo Speakers
- P&S and Forward Lounge Seating w/Storage
- Power Assist Steering
- Moritz Octoplex Control Monitor
- SS Springs for Bench Seat Lids
- Refrigerated Top Loading Drink Box

ELECTRONICS

- Furuno Navnet 96 NM Radar, Plotter, Sounder, Weather
- Backup Sounder
- (3) Display Screens
- Autopilot (Simrad)

- Plotter #2 (Northstar)
- Four (4) Display Screens
- Northstar Plotter
- SAT Phone (KVH)
- (5) Panasonic Phone System
- Fax/Printer/Scanner/Copier
- (3) Cameras (Elbex Color Ball)
- Furuno RD 30 Depth and Temp.
- SAT TV KVHTrackvision M7
- (5) DDS Hi Def Receivers
- HD Control (Salon & MSR)
- A/V UPS Backup
- (1) Dummy Dome (KVH)
- SAT Radio (Sirius)
- VHF (ICOM M604) Radio w/Overhead Speaker
- Overhead Mic in Radio Box
- Icom Command Mic (Salon & Cockpit)
- Stereo (Clarion) w/Amplifier
- Alarm System (Magellan Premier) w/Remote Video Monitoring System
- (2) ACR Spotlights
- Underwater Lights (6)

COCKPIT

- Window & Light for Transom Livewell
- Ice Chipper (to C/P Sole Box)
- (6) Rod Holders in Haunches
- E/R Door Lock
- Coaming Pads
- (2)24V Outlets & (2)12V Outlets
- Release Fighting Chair
- Grab Rails Inside Transom Door
- Freezer in Port Mezzanine Step
- Split Lid for Fishbox
- Seawater Supply for On-Deck Livewell
- Mezzanine Armrests w/cup holders
- Blue/White LED Rope Lights
- Blue/White C/P Overhang Lights
- Threaded Scupper Grates
- (8)Rupp Revolver Rod Holders
- (2)Step Boxes
- Quick Connect for Oil Change
- Cockpit Storage Cover

- P & S Cabinets Under Gunwale
- (2)100 Amp Glendenning Cablemasters
- Drop-In In-Deck Storage Box
- Extended F/B Overhang for Shade
- Fresh & Salt Water Washdowns
- Mezzanine
- Tackle Cabinet W/Drawers
- Bait Freezer (large)
- Fish Box (in deck, insulated)
- Refrigerator Drink Box (in mezzanine step)
- Stereo Speakers
- Storage Locker
- Transom Mounted Fishbox
- Walk Through Transom Door w/Lift Gate
- Y-Valve to Fill Water Tank
- Y-Valve Salt & Fresh Water Wash Down

ENGINE ROOM & MECHANICAL EQUIPMENT

- Watermaker (1800 gallons per day)
- (2)Onan 32KW Generators
- (2)MTU 16V 2000 M93 @ 2400MHP
- Extended MTU Service (to 3/20/17)
- Oil Change Line to Cockpit
- Dual Power Steering Pumps
- Headhunter Fresh Water Pump
- 110V & 220V Elec. Outlets
- (2)Tool Boxes w/16" Wide Drawers
- (2)Seawater Pumps (in parallel)
- All Head Blowers on ISO Dampeners
- A/C (2) 5 Ton Chilled Water Units
- Bow Thruster (Hydraulic)
- Delta-T Ventilation System
- Fire Suppression System
- Fresh Water Filter
- Fuel Priming Pumps
- Fuel Transfer & Management System
- Hydraulic Bilge Pump
- Oil Changing System
- PEX Plumbing W/Manifold System
- Props (class "S"; Cambered Blade Sections)
- Raycor Fuel/Water Separators
- Dripless Shaft Seals

- Water Heater (40 Gallon)
- Charles Shore Power Combiner
- Magnetic Switches for Bilge Lights
- Voltage Stabilizer Isolation Transformers
- 110V Water Pump
- Water Inlet Can Fill Water Tank, Feed Watermaker, or Pressurize System

DECK & HULL

- Bow Pulpit
- Windlass: Lewmar V6 SS Hydraulic
- Davit: Hydraulic Lift & Rotation (2200 lbs)
- Black Mask (forward)
- Prop Pockets
- Trim Tabs (with recessed covers)
- Fresh Water Washdown (anchor locker)
- SS Gas Spring (anchor locker hatch)
- Underwater Lights (6)
- White Hull
- Black Bottom Paint
- Fiberglass Thru-Hulls
- Underwater Exhaust
- Burgee Staff (bow rail)
- Fuel Fills (both P & S)
- Sliding Fender Tracks P & S
- Flats Boat: 18' Egret w/1500HP Yamaha 4-Stroke
- Polished Plow Anchor w/1200' Rope and 75' chain
- Stainless Plate Between Pulpit Liner & Chain
- Handrails (follow window line & wrap around front of house)
- Switlick 6-Man Life Raft

Исключения

При продаже яхты исключаются личные вещи владельца.

Отказ от ответственности

Компания предоставляет описание судна или яхты добросовестно, но не может гарантировать точность этой информации, а также не ручается за техническое состояние. Покупатель должен проинструктировать своих агентов или оценщиков исследовать представленную информацию более подробно, по собственному желанию. Продажа судна или яхты, изменение цены или снятие с продажи будет происходить без

предварительного уведомления.

ФОТОГРАФИИ

Salon



Galley/Dinette



Master Stateroom



Flybridge



Salon



Salon



Salon



Salon



Salon



Salon



Salon



Media Room



Galley/Dinette



Galley/Dinette



Galley/Dinette



Galley/Dinette



Galley/Dinette



Master Stateroom



Master Stateroom



Master Stateroom



Master Stateroom



Master Stateroom



Master Stateroom



Master Stateroom



Master Stateroom



Master Stateroom



Master Stateroom



Master Stateroom



Forward Port Stateroom



Forward Port Stateroom



Forward Port Stateroom



Forward VIP Stateroom



Forward VIP Stateroom



Forward VIP Stateroom



Forward VIP Stateroom



Forward VIP Stateroom



Forward VIP Stateroom



Starboard Stateroom



Starboard Stateroom



Starboard Stateroom



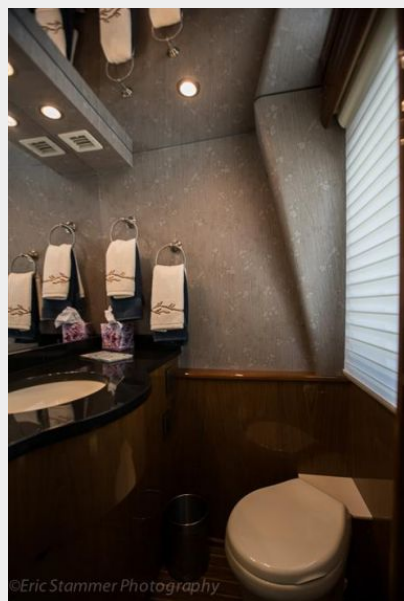
Starboard Stateroom



Dayhead



Dayhead



Forward Port Stateroom



Forward Port Stateroom



Forward Port Stateroom



Forward VIP Stateroom



Forward VIP Stateroom



Forward VIP Stateroom



Starboard Stateroom



Starboard Stateroom



Crew Aft Port Stateroom



Crew Aft Port Stateroom



Crew Aft Port Stateroom



Crew Aft Port Stateroom

Crew Aft Port Stateroom



Crew Aft Port Stateroom



Crew Aft Port Stateroom



Companionway



Companionway



Companionway



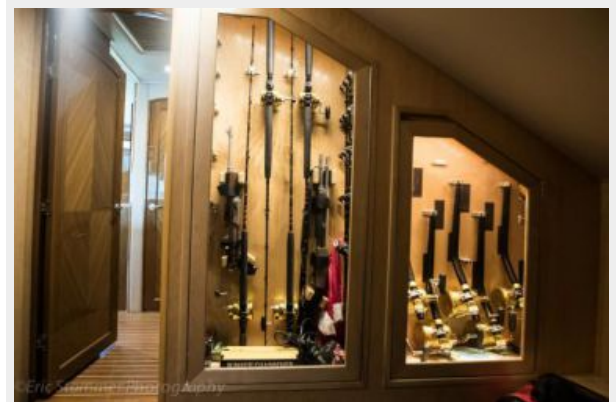
Storage Room



Storage Room



Storage Room



Flybridge



Flybridge



Flybridge



Flybridge



Flybridge



Flybridge



Flybridge

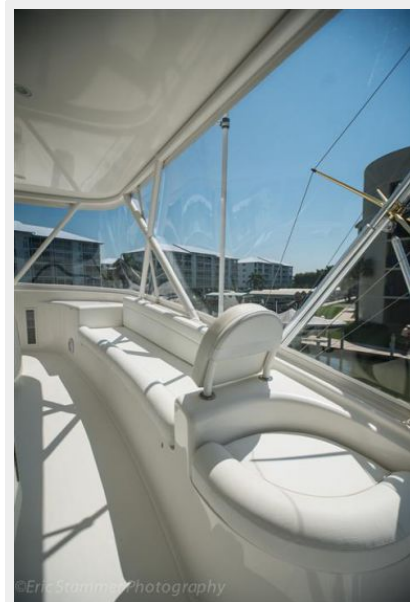


Flybridge



Flybridge

Flybridge



Flybridge



Flybridge



Flybridge



Flybridge



Flybridge



Flybridge



Flybridge



Flybridge



Flybridge



Cockpit



Cockpit



Cockpit



Cockpit



Cockpit



Cockpit



Cockpit



Cockpit



Engine Room



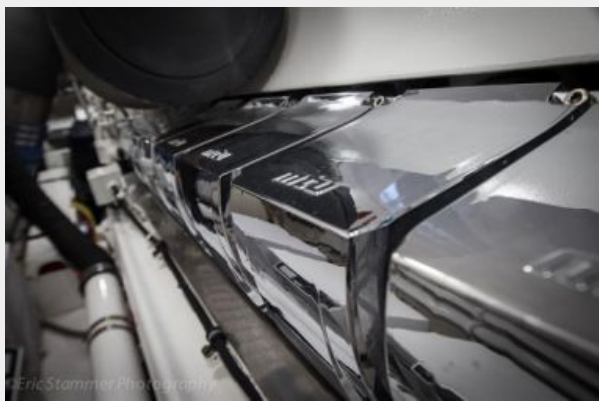
Engine Room



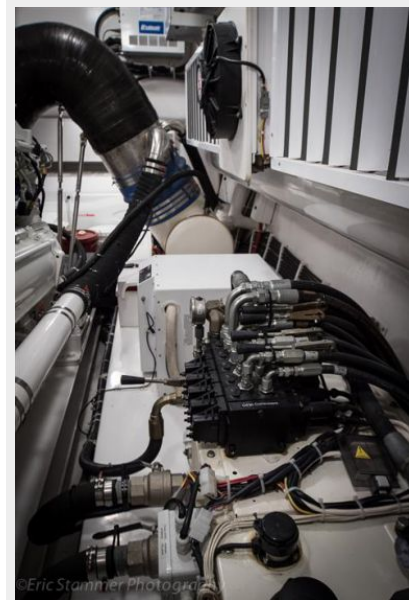
Engine Room



Engine Room



Engine Room



Engine Room



Engine Room



Engine Room



Engine Room



Engine Room



Engine Room



Engine Room



Engine Room



Egret Flats Boat



Egret Flats Boat



Bow



Bow



Bow



Bow



КОНТАКТЫ

Андрей Шестаков (Andrey Shestakov) – ведущий яхтенный брокер отдела продаж яхт и судов компании Shestakov Yacht Sales Inc. Официальный представитель Shestakov Yacht Sales Inc. для русскоговорящих клиентов в центральном офисе компании в Майами/Форт Лодердейл/Флорида/США.

Контактная информация

Email: andrey@shestakovyachtsales.com

Web: shestakovyachtsales.com

Телефоны

Краснодарский край: **+7(918)465-66-44**

США, Майами, Флорида: **+1(954)274-4435**

Время работы

Понедельник – Суббота: **9:00 - 21:00**
EDT

Воскресенье: **Закрито**

Адрес



Harbour Towne Marina, 850 NE 3rd St,
STE 213, Dania, FL 33004