

## TAKES TWO — DEFEVER



**Builder:** DEFEVER

**Year Built:** 1991

**Model:** Trawler

**Price:** PRICE ON APPLICATION

**Location:** United States

**LOA:** 49' 0" (14.94m)

**Beam:** 15' 0" (4.57m)

**Min Draft:** 4' 9" (1.45m)

**Cruise Speed:** 8 Kts. (9 MPH)

**Max Speed:** 10 Kts. (12 MPH)

Our experienced yacht broker, Andrey Shestakov, will help you choose and buy a yacht that best suits your needs **Takes Two — DEFEVER** from our catalogue. Presently, at Shestakov Yacht Sales Inc., we have a wide variety of yachts available on our sale's list. We also work in close contact with all the big yacht manufacturers from all over the world.

If you would like to buy a yacht **Takes Two — DEFEVER** or would like help answering any questions concerning purchasing, selling or chartering a yacht, please call **+1(954)274-4435**

# TABLE OF CONTENTS

TABLE OF CONTENTS	2
SPECIFICATIONS	5
Overview	5
Basic Information	5
Dimensions	5
Speed, Capacities and Weight	5
Accommodations	5
Hull and Deck Information	6
Engine Information	6
DETAILED INFORMATION	7
49' DeFever Overview	7
49' DeFever Vessel Walkthrough	7
49' DeFever Accommodations	7
49' DeFever Salon	7
49' DeFever Galley	7
49' DeFever Master Stateroom	8
49' DeFever Guest Stateroom	8
49' DeFever Raised Pilothouse	8
49' DeFever Flybridge	8
49' DeFever Aftdeck	8
49' DeFever Audio/Visual Equipment	8
49' DeFever Electronics	9
49' DeFever Electrical System	9
49' DeFever Engine/Mechanical Equipment	9
49' DeFever Deck Equipment	10
49' DeFever Tender	10
49' DeFever Safety and Fire Protection	11
49' DeFever Exclusions	11

49' DeFever Disclaimer	11
Exclusions	11
Disclaimer	11
PHOTOS	12
49' DeFever Anchor Windlass	12
49' DeFever Foredeck	12
49' DeFever Foredeck Aft	12
49' DeFever Portuguese Bridge	12
49' DeFever Port Side Deck photo1	13
49' DeFever Port Side Deck photo2	13
49' DeFever Flybridge Forward	13
49' DeFever Flybridge Aft	13
49' DeFever Flybridge Port	13
49' DeFever Flybridge Helm	13
49' DeFever Flybridge Helmseat	14
49' DeFever Flybridge Seating	14
49' DeFever Hinged Arch	14
49' DeFever Aftdeck	14
49' DeFever Aftdeck Port	14
49' DeFever Aftdeck Starboard	14
49' DeFever Salon Forward	15
49' DeFever Salon Aft	15
49' DeFever Galley photo1	15
49' DeFever Galley photo2	15
49' DeFever Pilothouse Forward	15
49' DeFever Pilothouse Port	15
49' DeFever Pilothouse Starboard	16
49' DeFever Pilothouse Helm	16
49' DeFever Pilothouse Seating	16

---

49' DeFever Master Stateroom	16
49' DeFever Master Stateroom Port	16
49' DeFever Master Stateroom Starboard	16
49' DeFever Master Stateroom Head	17
49' DeFever Master Stateroom Forward	17
49' DeFever Master Stateroom Shower	17
49' DeFever Guest Stateroom	17
49' DeFever Engine Room Forward	18
49' DeFever Port Main Engine	18
49' DeFever Fuel Manifold	18
49' DeFever Racor Fuel Filters	18
49' DeFever Electrical Panel	19
49' DeFever Port Stabilizer Head	19
49' DeFever Battery Charger	19
49' DeFever Generator	19
CONTACTS	20
Contact details	20
Telephones	20
Office hours	20
Address	20

---

# SPECIFICATIONS

---

## Overview

---

Takes Two is a classic "Plan A", 1991 49' DeFever raised pilothouse trawler. She offers a 2 stateroom, 2 head layout, fuel efficient Perkins main engines, stabilizers and numerous updates. Takes Two is very well-maintained, very clean and uncluttered. She is also a Great Loop veteran. 49' RPH DeFever's are very rare these days, so don't miss this one.

## Basic Information

---

<b>Category:</b> Trawler	<b>Sub Category:</b> Raised Pilothouse
<b>Model Year:</b> 1991	<b>Year Built:</b> 1991
<b>Country:</b> United States	<b>Fly Bridge:</b> Yes

## Dimensions

---

<b>LOA:</b> 49' 0" (14.94m)	<b>LWL:</b> 43' 10" (13.36m)
<b>Beam:</b> 15' 0" (4.57m)	<b>Min Draft:</b> 4' 9" (1.45m)

## Speed, Capacities and Weight

---

<b>Cruise Speed:</b> 8 Kts. (9 MPH)	<b>Max Speed:</b> 10 Kts. (12 MPH)
<b>Displacement:</b> 57000 Pounds	<b>Water Capacity:</b> 450 Gallons
<b>Holding Tank:</b> 60 Gallons	<b>Fuel Capacity:</b> 1000 Gallons

## Accommodations

---

<b>Total Cabins:</b> 2	<b>Total Berths:</b> 3
<b>Sleeps:</b> 4	<b>Total Heads:</b> 2

---

## Hull and Deck Information

---

**Hull Material:** Fiberglass

**Deck Material:** Composite Fiberglass

**Hull Color:** White

**Hull Finish:** Stainless Steel

**Hull Designer:** Arthur DeFever

---

## Engine Information

---

**Engines:** 2

**Manufacturer:** Perkins

**Model:** Range 4 M200TI

**Engine Type:** Inboard

**Fuel Type:** Diesel

---

# DETAILED INFORMATION

---

## 49' DeFever Overview

---

Takes Two is a classic "Plan A", 1992 49' DeFever raised pilothouse trawler. She offers a 2 stateroom, 2 head layout, fuel efficient Perkins main engines, stabilizers and numerous updates. Takes Two is very well-maintained, very clean and uncluttered. She is also a Great Loop veteran. 49' RPH DeFever's are very rare these days, so don't miss this one

## 49' DeFever Vessel Walkthrough

---

Entering the salon through the covered aftdeck double doors, you will find a sofa and coffee table to port, a lounge chair and ottoman to starboard, a new granite top cabinet with under counter refrigerators/freezers starboard forward and the galley port forward. Step into the raised pilothouse and you will find a settee and table to port, helm forward, side deck access doors on each side, stairs to the flybridge starboard aft and stairs to the guest staterooms starboard forward. The master stateroom is amidships below and the guest stateroom is forward. Engine room access is through a deck hatch in the forward salon or through the lazarette. There is new LED lighting throughout the vessel.

## 49' DeFever Accommodations

---

Takes Two offers a master stateroom amidships with ensuite head and a guest stateroom forward with the guest head to port accessed from the foyer.

## 49' DeFever Salon

---

The large salon offers an L-shaped sofa, end table and coffee table to port, a lounge chair and ottoman to starboard, flat screen TV starboard forward, opening side windows, aft window, blinds, double teak & glass doors aft to the aftdeck and teak parquet sole.

## 49' DeFever Galley

---

The galley is located forward in the salon.

- 2 X Isotherm under counter refrigerators/freezers (2013)
- Amana Radar Range microwave/convection oven
- Jenn-Aire range with grill and oven

- Solid surface countertop and molded-in double sinks and granite countertop to starboard

---

## 49' DeFever Master Stateroom

---

The master stateroom is amidships and offers a queen centerline berth, nightstands, 2 portlights, reading lights, storage drawers and cabinets, hanging lockers, teak parquet sole and ensuite head with enclosed shower.

---

## 49' DeFever Guest Stateroom

---

The guest stateroom is forward and offers a v-berth, reading lights, 4 portlights and an overhead deck hatch, storage drawers, shelves and cabinets, hanging locker and teak parquet sole. The guest head is to port accessed via the foyer.

---

## 49' DeFever Raised Pilothouse

---

The raised pilothouse offers a full helm forward, storage drawers and storage under the console, side deck access doors on each side, a built-in settee and table aft and stairs to the flybridge starboard aft.

---

## 49' DeFever Flybridge

---

The flybridge offers a helm forward, stairs and hatch to the pilothouse starboard forward, helm seat, L-shaped, built-in seating, non-skid deck, bimini fore and aft of the hinged Radar arch.

---

## 49' DeFever Aftdeck

---

The covered aftdeck offers a teak deck, double teak & glass doors to the salon forward, stainless steel & teak ladder and hatch to the flybridge, same-level side deck access, transom door to the swimplatform and access to the lazarette.

---

## 49' DeFever Audio/Visual Equipment

---

- KVH M3 satellite TV system
- DirecTV satellite TV receiver
- LG flat screen TV in the salon
- Kenwood KRC-208S cassette/stereo in the pilothouse



- Polyplaner interior and exterior speakers

---

## **49' DeFever Electronics**

---

- Raytheon Pathfinder RL80C Radar/Chart plotter at the lower helm
- Raymarine E90w Multi-Function Display at the lower helm (2013)
- Raytheon L760 Fishfinder on the flybridge
- Northstar 952X GPS at the lower helm
- Simrad AP20 autopilot at the lower helm and AP21 on the flybridge
- Icom IC-M502 VHF at the lower helm and Icom Commandmic II VHF on the flybridge
- Icom IC-M710 SSB at the lower helm
- Ritchie magnetic compass on the flybridge

---

## **49' DeFever Electrical System**

---

- Northern Lights PX-6302 12kW generator with 2175 hours
- Magnum 2812 2800 watt inverter/charger with remote panel in the pilothouse
- Link 2000 battery monitor
- 4 X 8D start and house batteries
- 1 X Group 24 generator start battery
- 2 X AC Delco 65 amp alternators
- 50 amp shore cord

---

## **49' DeFever Engine/Mechanical Equipment**

---

- Twin Perkins Range 4 M200TI 200hp main engines with 1700 hours
- Hurth HSW630A2.5 gearboxes
- Morse engine controls
- Racor 1000FG fuel filter with vacuum gauge for each main engine

- Groco sea strainers
- Teleflex Seastar hydraulic steering system
- Naiad 252 stabilizer system (New seals in 2013)
- 2 X Technicold 16,000 BTU reverse cycle air conditioning system
- Kuuma 11 gallon stainless steel water heater (2013)
- Jabsco electric heads
- Raritan Electro-scan blackwater treatment system
- Scad holding tank monitor
- 2" stainless steel shafts

---

## 49' DeFever Deck Equipment

---

- Maxwell 2200 anchor windlass with foot pedals at windlass
- Rocna 40lb anchor with 300' 3/8" anchor chain (2012)
- Teak decks sides and aft and non-skid on the foredeck
- Teak cap rails
- Stainless steel deck hardware
- Stainless steel fender racks forward
- Foredeck storage locker
- Teak swimplatform
- Bulwark doors each side amidships
- Fresh water washdown aft
- Portuguese bridge with storage
- Windscreen cover
- Hull bottom painted November 2014

---

## 49' DeFever Tender

---

- West Marine RIB 310 HYP tender
- Honda 9.9 hp outboard
- Tender davit

---

## 49' DeFever Safety and Fire Protection

---

- ACR searchlight
- Fireboy engine room fire suppression system
- Rule bilge pumps
- Fire extinguishers
- Safe-T-Alert carbon monoxide detectors

---

## 49' DeFever Exclusions

---

Seller's personal belongings

---

## 49' DeFever Disclaimer

---

The Company offers the details of this vessel in good faith but cannot guarantee or warrant the accuracy of this information nor warrant the condition of the vessel. A buyer should instruct his agents, or his surveyors, to investigate such details as the buyer desires validated. This vessel is offered subject to prior sale, price change, or withdrawal without notice.

---

## Exclusions

---

Owner's personal belongings.

---

## Disclaimer

---

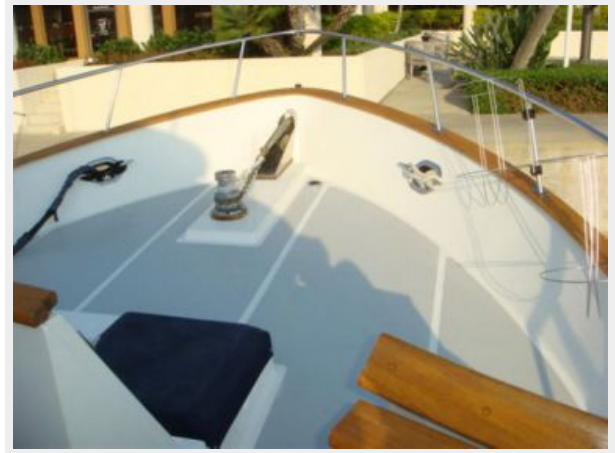
The Company offers the details of this vessel or yacht in good faith but cannot guarantee or warrant the accuracy of this information nor warrant the condition of the vessel. A buyer should instruct his representatives, agents, or his surveyors, to investigate such details as the buyer desires validated. This vessel or yacht is offered subject to prior sale, price change, or withdrawal without notice.

# PHOTOS

**49' DeFever Anchor Windlass**



**49' DeFever Foredeck**



**49' DeFever Foredeck Aft**



**49' DeFever Portuguese Bridge**



49' DeFever Port Side Deck photo1



49' DeFever Port Side Deck photo2



49' DeFever Flybridge Forward



49' DeFever Flybridge Aft



49' DeFever Flybridge Port



49' DeFever Flybridge Helm



**49' DeFever Flybridge Helmseat**



**49' DeFever Flybridge Seating**



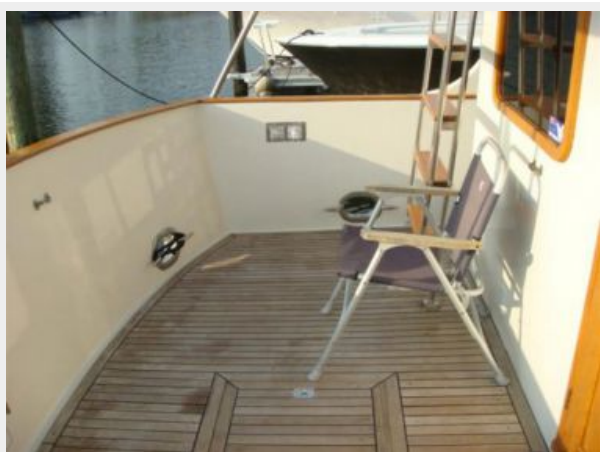
**49' DeFever Hinged Arch**



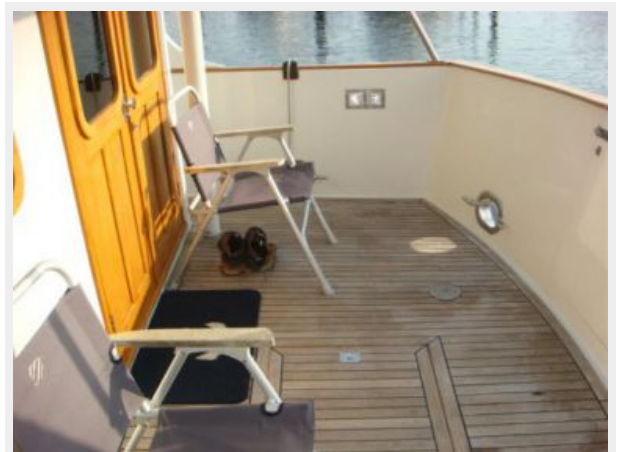
**49' DeFever Aftdeck**



**49' DeFever Aftdeck Port**



**49' DeFever Aftdeck Starboard**



**49' DeFever Salon Forward**



**49' DeFever Salon Aft**



**49' DeFever Galley photo1**



**49' DeFever Galley photo2**



**49' DeFever Pilothouse Forward**



**49' DeFever Pilothouse Port**



**49' DeFever Pilothouse Starboard**



**49' DeFever Pilothouse Helm**



**49' DeFever Pilothouse Seating**



**49' DeFever Master Stateroom**



**49' DeFever Master Stateroom Port**



**49' DeFever Master Stateroom Starboard**





### 49' DeFever Master Stateroom Head

### 49' DeFever Master Stateroom Forward



### 49' DeFever Master Stateroom Shower



### 49' DeFever Guest Stateroom



**49' DeFever Engine Room Forward**



**49' DeFever Port Main Engine**



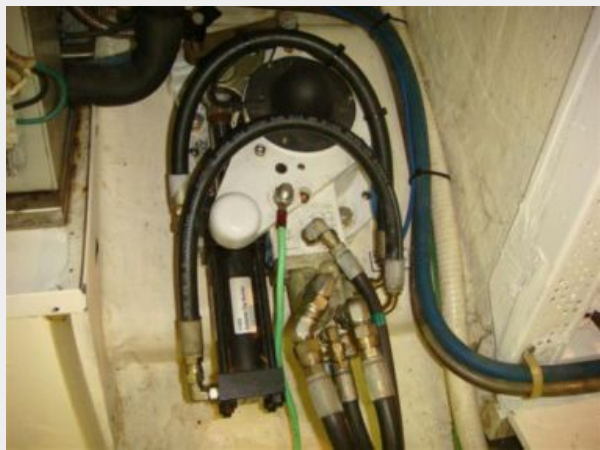
**49' DeFever Fuel Manifold**



**49' DeFever Racor Fuel Filters**



49' DeFever Port Stabilizer Head



49' DeFever Electrical Panel



49' DeFever Generator



49' DeFever Battery Charger



# CONTACTS

---

Andrey Shestakov, leading yacht broker of the sales department of Shestakov Yacht Sales Inc. Shestakov Yacht Sales Inc., the official representative of the Miami/Fort Lauderdale FL headquarters.

## Contact details

---

Email: [andrey@shestakovyachtsales.com](mailto:andrey@shestakovyachtsales.com)

Web: [shestakovyachtsales.com/en/](http://shestakovyachtsales.com/en/)

## Telephones

---

USA: +1(954)274-4435

## Office hours

---

Monday – Saturday: **9:00 - 21:00** EDT

Sunday: **closed**

## Address

---



Harbour Towne Marina, 850 NE 3rd St,  
STE 213, Dania, FL 33004