

TAKES TWO — DEFEVER



Судостроитель: DEFEVER

Год постройки: 1991

Модель: Траулер

Цена: **ЦЕНА ЯХТЫ ПО ЗАПРОСУ**

Местонахождение: United States

Длина общая: 49' 0" (14.94m)

Ширина: 15' 0" (4.57m)

Мин. осадка: 4' 9" (1.45m)

Крейс. скорость: 8 Kts. (9 MPH)

Макс. скорость: 10 Kts. (12 MPH)

Купить **Takes Two — DEFEVER** а также выбрать подходящую вам яхту из нашего каталога яхт вам поможет опытный яхтенный брокер Андрей Шестаков. На сегодняшний день компания **Shestakov Yacht Sales Inc.** имеет большое количество яхт в собственном списке продаж, а также тесно сотрудничает со всеми крупными яхтенными производителями по всему миру.

Для того чтобы купить яхту **Takes Two — DEFEVER** а также проконсультироваться по любому вопросу связанному с покупкой, продажей, чартером яхт позвоните по телефону **+7(918)465-66-44**.

ОГЛАВЛЕНИЕ

ОГЛАВЛЕНИЕ	2
ХАРАКТЕРИСТИКИ	5
Обзор	5
Основная информация	5
Размеры	5
Скорость, вместимость и масса	5
Размещение	5
Корпус и палуба	6
Информация о двигателе	6
ПОДРОБНОЕ ОПИСАНИЕ	7
49' DeFever Overview	7
49' DeFever Vessel Walkthrough	7
49' DeFever Accommodations	7
49' DeFever Salon	7
49' DeFever Galley	7
49' DeFever Master Stateroom	8
49' DeFever Guest Stateroom	8
49' DeFever Raised Pilothouse	8
49' DeFever Flybridge	8
49' DeFever Aftdeck	8
49' DeFever Audio/Visual Equipment	8
49' DeFever Electronics	9
49' DeFever Electrical System	9
49' DeFever Engine/Mechanical Equipment	9
49' DeFever Deck Equipment	10
49' DeFever Tender	10
49' DeFever Safety and Fire Protection	11
49' DeFever Exclusions	11

49' DeFever Disclaimer	11
Исключения	11
Отказ от ответственности	11
ФОТОГРАФИИ	12
49' DeFever Anchor Windlass	12
49' DeFever Foredeck	12
49' DeFever Foredeck Aft	12
49' DeFever Portuguese Bridge	12
49' DeFever Port Side Deck photo1	13
49' DeFever Port Side Deck photo2	13
49' DeFever Flybridge Forward	13
49' DeFever Flybridge Aft	13
49' DeFever Flybridge Port	13
49' DeFever Flybridge Helm	13
49' DeFever Flybridge Helmseat	14
49' DeFever Flybridge Seating	14
49' DeFever Hinged Arch	14
49' DeFever Aftdeck	14
49' DeFever Aftdeck Port	14
49' DeFever Aftdeck Starboard	14
49' DeFever Salon Forward	15
49' DeFever Salon Aft	15
49' DeFever Galley photo1	15
49' DeFever Galley photo2	15
49' DeFever Pilothouse Forward	15
49' DeFever Pilothouse Port	15
49' DeFever Pilothouse Starboard	16
49' DeFever Pilothouse Helm	16
49' DeFever Pilothouse Seating	16

49' DeFever Master Stateroom	16
49' DeFever Master Stateroom Port	16
49' DeFever Master Stateroom Starboard	16
49' DeFever Master Stateroom Head	17
49' DeFever Master Stateroom Forward	17
49' DeFever Master Stateroom Shower	17
49' DeFever Guest Stateroom	17
49' DeFever Engine Room Forward	18
49' DeFever Port Main Engine	18
49' DeFever Fuel Manifold	18
49' DeFever Racor Fuel Filters	18
49' DeFever Electrical Panel	19
49' DeFever Port Stabilizer Head	19
49' DeFever Battery Charger	19
49' DeFever Generator	19
КОНТАКТЫ	20
Контактная информация	20
Телефоны	20
Время работы	20
Адрес	20

ХАРАКТЕРИСТИКИ

Обзор

Takes Two is a classic "Plan A", 1991 49' DeFever raised pilothouse trawler. She offers a 2 stateroom, 2 head layout, fuel efficient Perkins main engines, stabilizers and numerous updates. Takes Two is very well-maintained, very clean and uncluttered. She is also a Great Loop veteran. 49' RPH DeFever's are very rare these days, so don't miss this one.

Основная информация

Тип судна: Траулер	Подкатегория: Raised Pilothouse
Модельный год: 1991	Год постройки: 1991
Страна: United States	Открытая палуба мостика: Да

Размеры

Длина общая: 49' 0" (14.94m)	Длина по ватерлинии: 43' 10" (13.36m)
Ширина: 15' 0" (4.57m)	Мин. осадка: 4' 9" (1.45m)

Скорость, вместимость и масса

Крейс. скорость: 8 Kts. (9 MPH)	Макс. скорость: 10 Kts. (12 MPH)
Водоизмещение: 57000 Pounds	Вместимость воды: 450 Gallons
Вместимость сточного бака: 60 Gallons	Объем топливного бака: 1000 Gallons

Размещение

Всего кают: 2	Всего коек: 3
Спальные места: 4	Всего ком. состава: 2

Корпус и палуба

Материал корпуса: Fiberglass

Материал палубы: Composite Fiberglass

Цвет корпуса: White

Отделка корпуса: Stainless Steel

Дизайнер корпуса: Arthur DeFever

Информация о двигателе

Двигатели: 2

Производитель: Perkins

Модель: Range 4 M200T1

Тип двигателя: Inboard

Тип топлива: Diesel

ПОДРОБНОЕ ОПИСАНИЕ

49' DeFever Overview

Takes Two is a classic "Plan A", 1992 49' DeFever raised pilothouse trawler. She offers a 2 stateroom, 2 head layout, fuel efficient Perkins main engines, stabilizers and numerous updates. Takes Two is very well-maintained, very clean and uncluttered. She is also a Great Loop veteran. 49' RPH DeFever's are very rare these days, so don't miss this one

49' DeFever Vessel Walkthrough

Entering the salon through the covered aftdeck double doors, you will find a sofa and coffee table to port, a lounge chair and ottoman to starboard, a new granite top cabinet with under counter refrigerators/freezers starboard forward and the galley port forward. Step into the raised pilothouse and you will find a settee and table to port, helm forward, side deck access doors on each side, stairs to the flybridge starboard aft and stairs to the guest staterooms starboard forward. The master stateroom is amidships below and the guest stateroom is forward. Engine room access is through a deck hatch in the forward salon or through the lazarette. There is new LED lighting throughout the vessel.

49' DeFever Accommodations

Takes Two offers a master stateroom amidships with ensuite head and a guest stateroom forward with the guest head to port accessed from the foyer.

49' DeFever Salon

The large salon offers an L-shaped sofa, end table and coffee table to port, a lounge chair and ottoman to starboard, flat screen TV starboard forward, opening side windows, aft window, blinds, double teak & glass doors aft to the aftdeck and teak parquet sole.

49' DeFever Galley

The galley is located forward in the salon.

- 2 X Isotherm under counter refrigerators/freezers (2013)
- Amana Radar Range microwave/convection oven
- Jenn-Aire range with grill and oven

- Solid surface countertop and molded-in double sinks and granite countertop to starboard

49' DeFever Master Stateroom

The master stateroom is amidships and offers a queen centerline berth, nightstands, 2 portlights, reading lights, storage drawers and cabinets, hanging lockers, teak parquet sole and ensuite head with enclosed shower.

49' DeFever Guest Stateroom

The guest stateroom is forward and offers a v-berth, reading lights, 4 portlights and an overhead deck hatch, storage drawers, shelves and cabinets, hanging locker and teak parquet sole. The guest head is to port accessed via the foyer.

49' DeFever Raised Pilothouse

The raised pilothouse offers a full helm forward, storage drawers and storage under the console, side deck access doors on each side, a built-in settee and table aft and stairs to the flybridge starboard aft.

49' DeFever Flybridge

The flybridge offers a helm forward, stairs and hatch to the pilothouse starboard forward, helm seat, L-shaped, built-in seating, non-skid deck, bimini fore and aft of the hinged Radar arch.

49' DeFever Aftdeck

The covered aftdeck offers a teak deck, double teak & glass doors to the salon forward, stainless steel & teak ladder and hatch to the flybridge, same-level side deck access, transom door to the swimplatform and access to the lazarette.

49' DeFever Audio/Visual Equipment

- KVH M3 satellite TV system
- DirecTV satellite TV receiver
- LG flat screen TV in the salon
- Kenwood KRC-208S cassette/stereo in the pilothouse

- Polyplaner interior and exterior speakers

49' DeFever Electronics

- Raytheon Pathfinder RL80C Radar/Chart plotter at the lower helm
- Raymarine E90w Multi-Function Display at the lower helm (2013)
- Raytheon L760 Fishfinder on the flybridge
- Northstar 952X GPS at the lower helm
- Simrad AP20 autopilot at the lower helm and AP21 on the flybridge
- Icom IC-M502 VHF at the lower helm and Icom Commandmic II VHF on the flybridge
- Icom IC-M710 SSB at the lower helm
- Ritchie magnetic compass on the flybridge

49' DeFever Electrical System

- Northern Lights PX-6302 12kW generator with 2175 hours
- Magnum 2812 2800 watt inverter/charger with remote panel in the pilothouse
- Link 2000 battery monitor
- 4 X 8D start and house batteries
- 1 X Group 24 generator start battery
- 2 X AC Delco 65 amp alternators
- 50 amp shore cord

49' DeFever Engine/Mechanical Equipment

- Twin Perkins Range 4 M200TI 200hp main engines with 1700 hours
- Hurth HSW630A2.5 gearboxes
- Morse engine controls
- Racor 1000FG fuel filter with vacuum gauge for each main engine

- Groco sea strainers
- Teleflex Seastar hydraulic steering system
- Naiad 252 stabilizer system (New seals in 2013)
- 2 X Technicold 16,000 BTU reverse cycle air conditioning system
- Kuuma 11 gallon stainless steel water heater (2013)
- Jabsco electric heads
- Raritan Electro-scan blackwater treatment system
- Scad holding tank monitor
- 2" stainless steel shafts

49' DeFever Deck Equipment

- Maxwell 2200 anchor windlass with foot pedals at windlass
- Rocna 40lb anchor with 300' 3/8" anchor chain (2012)
- Teak decks sides and aft and non-skid on the foredeck
- Teak cap rails
- Stainless steel deck hardware
- Stainless steel fender racks forward
- Foredeck storage locker
- Teak swimplatform
- Bulwark doors each side amidships
- Fresh water washdown aft
- Portuguese bridge with storage
- Windscreen cover
- Hull bottom painted November 2014

49' DeFever Tender

- West Marine RIB 310 HYP tender
- Honda 9.9 hp outboard
- Tender davit

49' DeFever Safety and Fire Protection

- ACR searchlight
- Fireboy engine room fire suppression system
- Rule bilge pumps
- Fire extinguishers
- Safe-T-Alert carbon monoxide detectors

49' DeFever Exclusions

Seller's personal belongings

49' DeFever Disclaimer

The Company offers the details of this vessel in good faith but cannot guarantee or warrant the accuracy of this information nor warrant the condition of the vessel. A buyer should instruct his agents, or his surveyors, to investigate such details as the buyer desires validated. This vessel is offered subject to prior sale, price change, or withdrawal without notice.

Исключения

При продаже яхты исключаются личные вещи владельца.

Отказ от ответственности

Компания предоставляет описание судна или яхты добросовестно, но не может гарантировать точность этой информации, а также не ручается за техническое состояние. Покупатель должен проинструктировать своих агентов или оценщиков исследовать представленную информацию более подробно, по собственному желанию. Продажа судна или яхты, изменение цены или снятие с продажи будет происходить без предварительного уведомления.

ФОТОГРАФИИ

49' DeFever Anchor Windlass



49' DeFever Foredeck



49' DeFever Foredeck Aft



49' DeFever Portuguese Bridge



49' DeFever Port Side Deck photo1



49' DeFever Port Side Deck photo2



49' DeFever Flybridge Forward



49' DeFever Flybridge Aft



49' DeFever Flybridge Port



49' DeFever Flybridge Helm



49' DeFever Flybridge Helmseat



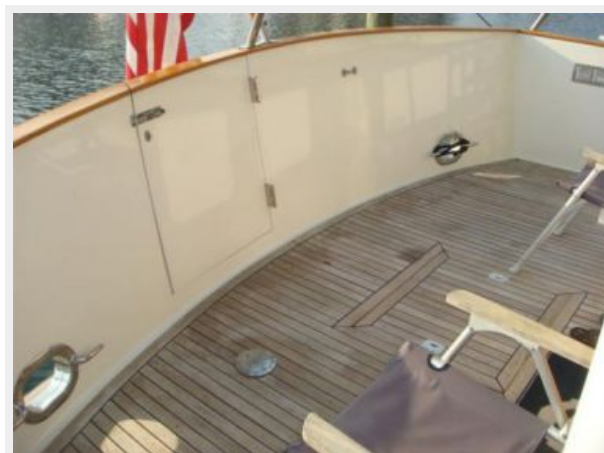
49' DeFever Flybridge Seating



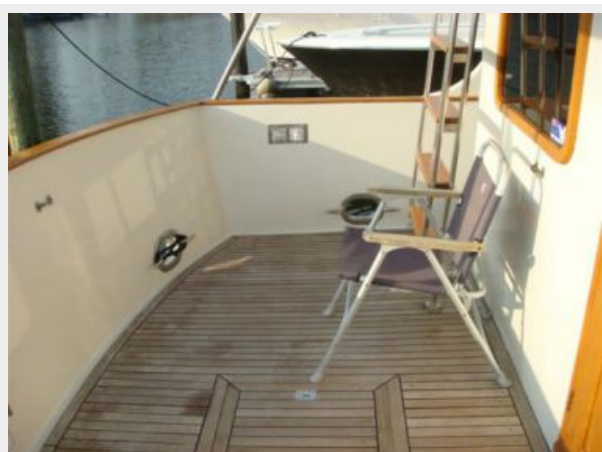
49' DeFever Hinged Arch



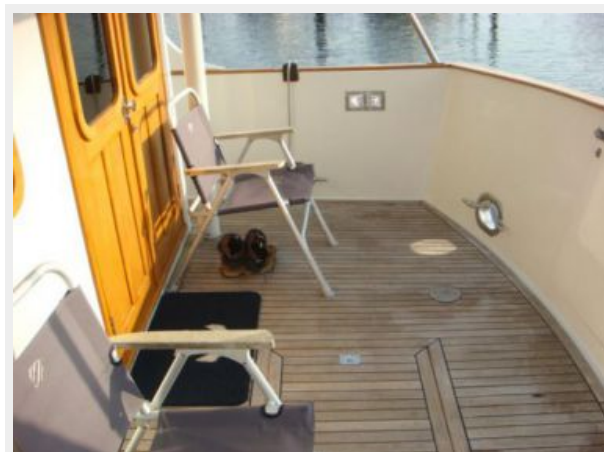
49' DeFever Aftdeck



49' DeFever Aftdeck Port



49' DeFever Aftdeck Starboard



49' DeFever Salon Forward



49' DeFever Salon Aft



49' DeFever Galley photo1



49' DeFever Galley photo2



49' DeFever Pilothouse Forward



49' DeFever Pilothouse Port



49' DeFever Pilothouse Starboard



49' DeFever Pilothouse Helm



49' DeFever Pilothouse Seating



49' DeFever Master Stateroom



49' DeFever Master Stateroom Port



49' DeFever Master Stateroom Starboard



49' DeFever Master Stateroom Head

49' DeFever Master Stateroom Forward



49' DeFever Master Stateroom Shower



49' DeFever Guest Stateroom



49' DeFever Engine Room Forward



49' DeFever Port Main Engine



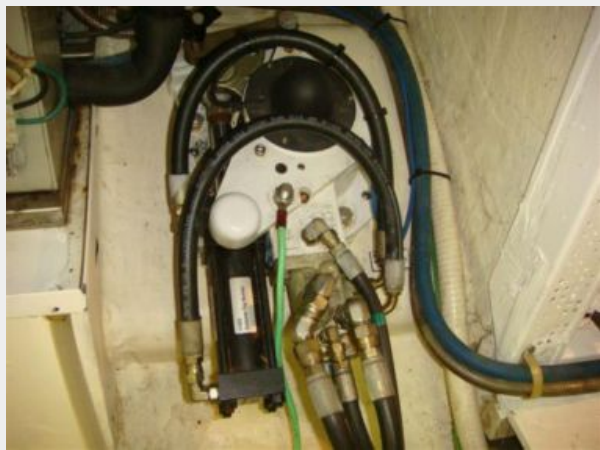
49' DeFever Fuel Manifold



49' DeFever Racor Fuel Filters



49' DeFever Port Stabilizer Head



49' DeFever Electrical Panel



49' DeFever Generator



49' DeFever Battery Charger



КОНТАКТЫ

Андрей Шестаков (Andrey Shestakov) – ведущий яхтенный брокер отдела продаж яхт и судов компании Shestakov Yacht Sales Inc. Официальный представитель Shestakov Yacht Sales Inc. для русскоговорящих клиентов в центральном офисе компании в Майами/Форт Лодердейл/Флорида/США.

Контактная информация

Email: andrey@shestakovyachtsales.com

Web: shestakovyachtsales.com

Телефоны

Краснодарский край: **+7(918)465-66-44**

США, Майами, Флорида: **+1(954)274-4435**

Время работы

Понедельник – Суббота: **9:00 - 21:00**
EDT

Воскресенье: **Закрито**

Адрес



Harbour Towne Marina, 850 NE 3rd St,
STE 213, Dania, FL 33004