

WITS END — ISLANDER SAILBOATS



Судостроитель: ISLANDER SAILBOATS

Год постройки: 1983

Модель: Крейсерская яхта

Цена: ЦЕНА ЯХТЫ ПО ЗАПРОСУ

Местонахождение: United States

Длина общая: 41' 0" (12.50m)

Ширина: 14' 0" (4.27m)

Купить Wits End — ISLANDER SAILBOATS а также выбрать подходящую вам яхту из нашего каталога яхт вам поможет опытный яхтенный брокер Андрей Шестаков. На сегодняшний день компания Shestakov Yacht Sales Inc. имеет большое количество яхт в собственном списке продаж, а также тесно сотрудничает со всеми крупными яхтенными производителями по всему миру.

Для того чтобы купить яхту Wits End — ISLANDER SAILBOATS а также проконсультироваться по любому вопросу связанному с покупкой, продажей, чартером яхт позвоните по телефону **+7(918)465-66-44**.

ОГЛАВЛЕНИЕ

ОГЛАВЛЕНИЕ	2
ХАРАКТЕРИСТИКИ	3
Обзор	3
Основная информация	3
Размеры	3
Скорость, вместимость и масса	3
Размещение	3
Корпус и палуба	4
Информация о двигателе	4
ПОДРОБНОЕ ОПИСАНИЕ	5
Accommodations	5
Galley	5
Deck Equipment	6
Electrical Equipment	6
Electronics	7
Mechanical	7
Rigging	8
Remarks	8
Исключения	8
Отказ от ответственности	9
ФОТОГРАФИИ	10
КОНТАКТЫ	15
Контактная информация	15
Телефоны	15
Время работы	15
Адрес	15

ХАРАКТЕРИСТИКИ

Обзор

This Islander Freeport has been cruised, and is still equipped to leave immediately. She has been retrofitted by a professional rigger to allow passage through the Gulf Coast ICW with her 49' mast. Her bow thruster sets her apart from the competition, making this full keeled boat a breeze to dock. Wits End has been well cared for, and is completely loaded with equipment.

She resides in Mobile Bay, Alabama, Grand View Marina, at Dog River Bridge.

The owner wants this boat sold by November 15,2015! BRING ALL OFFERS!! Tender is NOT included in the sale!

Основная информация

Тип судна: Крейсерская яхта

Модельный год: 1983

Год постройки: 1983

Страна: United States

Размеры

Длина общая: 41' 0" (12.50m)

Ширина: 14' 0" (4.27m)

Трапы: 50' 0" (15.24m)

Скорость, вместимость и масса

Вместимость воды: 188 Gallons

Объем топливного бака: 188 Gallons

Размещение

Всего кают: 2

Корпус и палуба

Материал корпуса: Fiberglass

Информация о двигателе

Двигатели: 1

Производитель: Perkins

Модель: 4236

Тип двигателя: Inboard

Тип топлива: Diesel

ПОДРОБНОЕ ОПИСАНИЕ

Accommodations

Entering from the forward main companionway, there is a large u shaped dinette to starboard with a well equipped galley flanking to port. Moving forward and down a few steps, gains entry to the forward stateroom with a large double pullman berth, single berth, and private head w/ shower. Back in the saloon, moving aft, there is a passageway on the port side of the vessel. The passageway houses a walk-in door to the engine compartment, as well as a well laid out electrical panel. Moving further aft, you enter the master stateroom. The master stateroom offers a large queen berth with chart table, a second companionway to the cockpit and the master head and shower. This boat is perfectly suited for living aboard or long distance cruising.

Sleeps 5 owners and 2 guests in 2 staterooms, plus 2 dinette berths. Forward is double pullman berth to starboard with single berth to port with hanging locker, and starboard head. The forward stateroom includes a private head with shower. The aft stateroom offers a large queen berth and plenty of drawer storage and hanging lockers. The aft stateroom houses an additional head with shower. Interior wood in excellent condition.

16,000 BTU Air Conditioner with Reverse Air Heat 12v Fans throughout Two brass oil lanterns LED cabin lighting throughout Courtesy Lighting Custom oval dining table (Original table is not installed, but included)

Galley

This late model Freeport offers a large galley that features:

- Large counter top opening 12 V refrigerator and separate freezer
- Hillerange Gimbale 3 burner propane stove with oven
- Pressure fresh water system plus foot pump
- 110 V Water heater with engine heat exchanger
- Double stainless steel sink
- Cane fronted cabinets
- Microwave mounted inside cabinet
- Plentiful storage Large pantry

Deck Equipment

- Custom Dinghy Davits
- Two 45lb CQR anchors on double bow rollers Both anchors have 200' of road w/ 20' chain
- Boarding ladder
- Bimini top and dodger Saltwater deck wash down system
- Power winch
- Electric windlass
- Large SS Sea-B Que BBQ grill
- Full cockpit enclosure 2012
- Vetus through hull bow thruster

Electrical Equipment

This vessel is loaded with up to date electrical equipment. Her owner has the boat set up to never need to be plugged into shore power. The solar array will run the refrigeration.

- Custom 110V water maker for use with Generator
- Lectrasan waste treatment MSD (forward head)
- Pressurized freshwater hot and cold
- 110V water heater w/ engine heat exchanger
- Two manual Raritan heads
- Two shower sump boxes that pump overboard
- Two automatic bilge pumps
- Manual bilge pump
- 4.2 KW Diesel Generator
- 250 W solar panel with MPPT controller
- 16,000 BTU Flagship Air Conditioner
- Reverse air/heat
- 30A Shorepower
- 130A High output alternator w/ regulator
- 1000W Inverter
- Six Trojan group 31 house batteries Approx 600AH total
- Iota DLS-75 Battery Charger

Electronics

- Navico WP3000 Wheel Pilot
- Datamarine Depth and Speed
- Uniden VHF Standard Horizon VHF
- JRC 24NM CRT Radar
- Garmin 128 GPS
- 19" Element LCD television

Mechanical

New in 2014:

- Adler Evaporator Unit Refrigerator/Freezer and Adler Super Cold Machine air and H2O cooled Refrigeration
- Custom made bow cable and swags
- Shifter cable professionally installed
- 2 new batteries for bow thruster and Lectrasan waste treatment
- 2 stage battery charger for bow thruster and Letrasan
- Vetus bow thruster controller
- Generator selector switch
- Generator water cooling pump
- Rule 1100 automatic bilge pump
- Water pressure pump
- Racor fuel filter water separator to supply line
- Racor fuel filter water separator to generator
- All new fuel filters
- Fittings and lines for sea cock intake to filter for engine and generator
- Hot water heater switch and breaker
- Hot water heater element and adjustable thermostat
- Impeller on Perkins
- Forward shower sump pump and float switch
- Holding tank and hoses for aft head
- 5 additional LED light fixtures
- Forward shower fixture with sprayer hose
- Aft shower fixture with sprayer hose
- Forward sink faucet
- Aft sink faucet
- Stern light

- 30 amp shore power cord
- 30 amp receptacle plug
- Fire port for engine room door
- 5 fire extinguishers
- 2 smoke alarms
- 2 carbon monoxide detectors

Rigging

- 49' Main mast
- Jib in good condition
- Full Batten main
- New 2003 Mizen sail
- Club footed self tacking staysail
- Stack Pack Sail storage for main and mizen
- Profurl roller furler for jib
- 7 Bariant winches
- Manual boom vang
- Deck stepped aluminum mizzen mast
- Keel stepped main mast

Remarks

This Islander Freeport has been cruised, and is still equipped to leave immediately. She has been retrofitted by a professional rigger to allow passage through the Gulf Coast ICW with her 49' mast. Her bow thruster sets her apart from the competition, making this full keeled boat a breeze to dock. Wits End has been well cared for, and is completely loaded with equipment.

She resides in Mobile Bay, Alabama, Grand View Marina, at Dog River Bridge.

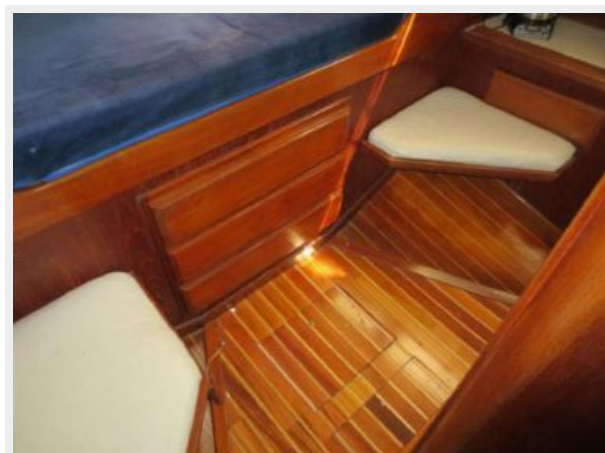
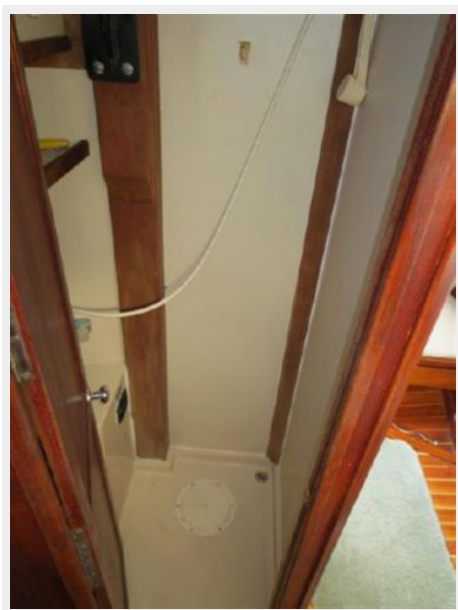
Исключения

При продаже яхты исключаются личные вещи владельца.

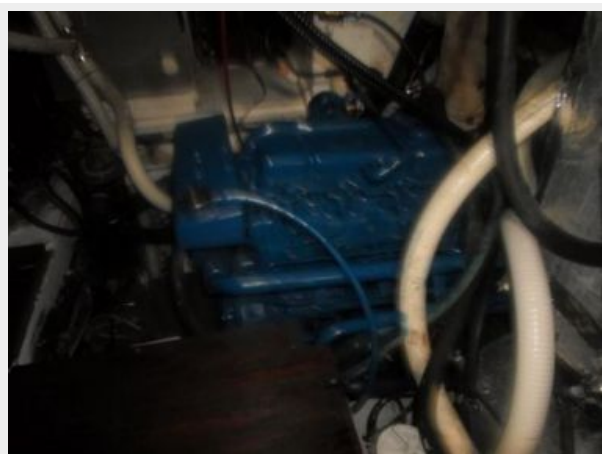
Отказ от ответственности

Компания предоставляет описание судна или яхты добросовестно, но не может гарантировать точность этой информации, а также не ручается за техническое состояние. Покупатель должен проинструктировать своих агентов или оценщиков исследовать представленную информацию более подробно, по собственному желанию. Продажа судна или яхты, изменение цены или снятие с продажи будет происходить без предварительного уведомления.

ФОТОГРАФИИ











КОНТАКТЫ

Андрей Шестаков (Andrey Shestakov) – ведущий яхтенный брокер отдела продаж яхт и судов компании Shestakov Yacht Sales Inc. Официальный представитель Shestakov Yacht Sales Inc. для русскоговорящих клиентов в центральном офисе компании в Майами/Форт Лодердейл/Флорида/США.

Контактная информация

Email: andrey@shestakovyachtsales.com

Web: shestakovyachtsales.com

Телефоны

Краснодарский край: **+7(918)465-66-44**

США, Майами, Флорида: **+1(954)274-4435**

Время работы

Понедельник – Суббота: **9:00 - 21:00**
EDT

Воскресенье: **Закрето**

Адрес



Harbour Towne Marina, 850 NE 3rd St,
STE 213, Dania, FL 33004