

MOXIE — GRAND BANKS



Builder: GRAND BANKS

Year Built: 2006

Model: Cruiser

Price: PRICE ON APPLICATION

Location: United States

LOA: 49' 0" (14.94m)

Beam: 16' 0" (4.88m)

Max Draft: 4' 6" (1.37m)

Our experienced yacht broker, Andrey Shestakov, will help you choose and buy a yacht that best suits your needs **MOXIE — GRAND BANKS** from our catalogue. Presently, at Shestakov Yacht Sales Inc., we have a wide variety of yachts available on our sale's list. We also work in close contact with all the big yacht manufacturers from all over the world.

If you would like to buy a yacht **MOXIE — GRAND BANKS** or would like help answering any questions concerning purchasing, selling or chartering a yacht, please call **+1(954)274-4435**

TABLE OF CONTENTS

TABLE OF CONTENTS	2
SPECIFICATIONS	5
Overview	5
Basic Information	5
Dimensions	5
Speed, Capacities and Weight	5
Accommodations	5
Hull and Deck Information	6
Engine Information	6
DETAILED INFORMATION	7
Construction	7
Exterior Equipment	7
Cockpit	8
Helmdeck	9
Electronics & Navigation	9
Factory Custom Options	10
Additional Options	12
Salon	13
Galley	14
Master Stateroom	14
Master Head	15
Guest Stateroom	15
Guest Head	15
Engines / Mechanical Equipment	16
Electrical Equipment	17
Remarks	19
Exclusions	19
Exclusions	19

Disclaimer	19
PHOTOS	20
Cockpit	20
Cockpit	20
Sidedeck	20
Cockpit	20
Bow	21
Bow	21
Helmdeck	21
Helmdeck	21
Helmdeck - TV drop down	22
Helmdeck - TV in custom cabinet	22
Helm Station	22
Helm Station	22
Helmdeck	23
Helmdeck	23
Helmdeck - custom A/C pillar	23
Helmdeck - custom A/C pillars	23
Salon	24
Salon	24
Galley	24
Galley	24
Companionway	24
Master Stateroom - fwd	24
Master Stateroom - fwd	25
Master Head	25
Guest Stateroom	25
Guest Head	25
Engine Room	26

Engine Room	26
Transom	26
Engine Room	26
CONTACTS	27
Contact details	27
Telephones	27
Office hours	27
Address	27

SPECIFICATIONS

Overview

MOXIE is the finest Grand Banks Eastbay 49 ever built. Every feature of each area of the boat was upgraded to another level in great detail compared to any other Eastbay 49' built to date. The custom factory details and options specified by her knowledgeable owners were based on their extensive knowledge and experiences during their vast boating lives. There has been no expense spared in keeping her maintained to the highest degree. From her bilge areas to her top sides, MOXIE is in mint condition and the finest Eastbay 49 available.

Basic Information

Category: Cruiser

Sub Category: Express

Model Year: 2006

Year Built: 2006

Country: United States

Dimensions

LOA: 49' 0" (14.94m)

Beam: 16' 0" (4.88m)

Max Draft: 4' 6" (1.37m)

Speed, Capacities and Weight

Water Capacity: 175 Gallons

Holding Tank: 82 Gallons

Fuel Capacity: 775 Gallons

Accommodations

Total Cabins: 2

Hull and Deck Information

Hull Material: Fiberglass

Engine Information

Engines: 2

Manufacturer: Caterpillar

Model: C-12

Engine Type: Inboard

Fuel Type: Diesel

DETAILED INFORMATION

Construction

Fresh Awl-Grip hull paint 2010

Bootstripe, painted Awl-Grip

Cabin soles, teak and holly

Epoxy barrier undercoat

Gel-coated fiberglass exterior

Hand laid fiberglass

Hydrex resin skin coat in hull lamination

Hull structural grid, FRP molded and foam

Molded quarter guard with SS rub rail

PVC foam cored above waterline

Solid fiberglass hull below waterline

Exterior Equipment

Anchor chain locker, self-draining

Anchor platform, single roller, stainless steel

Anodes, zinc, shaft and hull

Chocks and mooring cleats, stainless steel

Deck fills: diesel fuel, water and waste pump-out

Deck non-skid, side and forward cabinhouse deck and hardtop with painted non-skid

Dorade boxes, teak with chrome vents

Engine room vents, Delta-T air demisters

Flagstaff holders, bow and stern

Flagstaffs, teak, bow and stern

Foredeck lockers, port and starboard

Freshwater faucet, inside forward deck locker

Grab rails, stainless steel

Mast, aluminum

Rubrail, heavy-duty vinyl with stainless steel insert

Safety rails, stainless steel with intermediate rail and port and stbd rail gates

Skylight hatches with screens and blinds in cabins

Toe rail, teak

Trim tabs, single station control

Vents for fuel and water tanks

Windlass, low profile, chain/rode 12 volt

Windows, clear, tempered glass, flush installation

Windshield, center opening with stainless steel frame and electric actuator

Cockpit

Courtesy lights, 12 volt

Decking, teak, epoxy bonded

Engine room hatch, pneumatic

Hatches, hinged with gas cylinder lift-ups

Propane gas cylinder storage

Scuppers, stainless steel

Seat/storage box, molded with cushions

Swim ladder, fold-up, stainless steel with teak

Swim platform, teak, 12 slats

Transom door, hinged

Transom shower with retractable hose, hot/cold

Helmdeck

Chart locker

Companionway sliding hatch, teak with lockset

Compass

Cover for console and steering wheel

Decking, teak, epoxy bonded

Electronics console, teak

Engine removal soft patch

Gloss varnish

Helmseat - FRP with cushion

Propane gas cylinder storage

Skylight hatches (2) with screens

Settee, straight

Settee, L-shaped

Speakers, waterproof

Side opening sliding glass

Teak hi-lo table with maple inlay

Electronics & Navigation

Garmin 5212 Chart Plotter/Radar 2 screens, new 2013

Garmin depth tied into 5212 units, new 2013

Garmin Sirius satellite weather, new 2013

Simrad IS15 windsystem

Aspen multi-switch for TV system

Simrad AP26 Autopilot with AC 20 CPU, RF 300 compass, RPU 80 Dive for power assist steering

Standard Quantum VHF radio

ACR 100 Searchlight with control

Standard Quest VHF radio

Simrad Multi-Depth Transducer

Newmar hailer horn

KVH Trac4 Sat TV Antenna

Custom fabricated mast mount for KVH antenna

Sharp 20" Aquos LCD TV - guest

Samsung 29" HDTV, new 2015 - Master

23" LCD TV in custom teak fold down locker at starboard side helmdeck

Factory Custom Options

Custom TNT lift hydraulic swim platform with extended Grand Banks teak platform

Flag Blue hull - Fresh Awl-Grip paint 2010

Gold Cove stripe

(2) extra 20 AMP AC circuit breakers on main panel

Sidepower 11hp 24V dual prop bow thruster with separate 24V charger and gel batteries

Additional deck drain

Cantaluppi reading lights in master stateroom bulkhead in lieu of standard

(6) Cantaluppi lights in overhead hardtop - 3 at hardtop overhang, 2 white lights

outboard of red lights at forward helm deck and 1 white light above the L-settee at port side

(2) additional courtesy lights

(2) lights under each overhead locker in galley

Additional outlets in salon at bar cabinet, waterproof outlet at helm and inside port helm area

Glendinning cablemaster with 75' cord

(2) 16,000 BTU Marine Air A/C units with remote air handler at helm area - custom designed teak pillars located at aft helm deck with air conditioning exhaust vents installed in the upper section so that air is not blowing directly at you

Aft facing seat extended and bolstered with almond Ultraleather

Aft cockpit seat foldaway with cushion and cover

Extended L-shaped settee

Additional leaf for forward side of helm deck table with hi-lo table base and adjustable mount for the table allows this to be turned into an additional berth or lounging area

Window screens on opening windows

Additional refrigerator in helm bench seat

Stidd helm chair at steering station with teak slats behind (gloss finish)

Ultraleather at helm deck area cushions and Stidd seat

Salon U-settee in Ultraleather

SubZero refrigerator (stand alone unit) and second SubZero combination refrigerator/freezer/icemaker in galley

Granite countertop in galley with backsplash

Separate NovaKool top-load freezer

Island Berth in master widened by 6" for easy access to the berth

Gas assist on island bed for easy access to the storage below

Front loading Asko washer/dryer under each berth in Guest stateroom with access from the companionway through louvered teak doors

Lockers and drawers in heads with Formica installed

Interior teak trim finished in high gloss varnish

Dimmer switches - helmdeck, salon, galley, both staterooms

Trace inverter system Model PS 2512M-2500W with connection to both SubZero units

Both heads to have A/C ducts

Master head - granite countertop

Guest head - Bone Corian countertop

Grand Banks Formica on bulkheads

Salon table - gloss varnish

Pull out berth at U-settee in salon

Custom designed Overhead LCD TV teak locker at starboard side helm deck overhead.

Helmdeck forward port and starboard sides have custom designed shelf and storage area including drink holders

Steering wheel, stainless steel with teak rim

Additional Options

Hull & Topsides fully detailed, 2015

Fresh Varnish, 2015

New cockpit cushions, reupholstered in Ultraleather 2015

Fresh Awl-Grip hull paint 2010

Textilene window screens for all helmdeck windows

Padded Table Cover

Aft seat covers in Blue Sunbrella

Flagpole covers

Custom shower curtain and opening port cover

Two rod holders

Interior Fittings

Bulkheads, Teak and Formica

Cabin doors with lock sets

Cabinet furniture, teak face

Companionway bulkheads, upper panel with Formica and lower panel in teak with teak chair rail separation

Curtains, lined

Drawers, teak faced with solid wood sides, drawer slides

Custom fabrics throughout

Grab rails, teak

Hardware, stainless steel and chrome

Headlining, vinyl

Hull ceiling, teak

Lighting, Halogen, 12 volt

Lights, reading at berths

Lights, dimmer at helm

Lockers, with stainless steel knobs

Outlets, AC

Portholes, stainless steel with FG trim rings and screens

Soles, access hatches

Sole, teak and holly

Salon

Bookshelves

Indirect lighting, 12 volt

Reading lamps, chrome plated

Settee, U-settee, teak

Steps, teak with non-skid

Table with oval top, teak, fixed

TV locker with teak tambor door

Waste basket under companionway steps

Galley

Condiment locker

Countertop, Corian with back splash guard

Curtains treated with fire retardant spray

Exhaust blower, 12 volt

Faucet, single lever

Locker, overhead

Microwave oven - convection

Range/oven, electric

Sink, single bowl stainless steel with Corian cover and teak cutting boards below

Master Stateroom

Berth - Island Queen

Bureau with drawers

Escape hatch ladder

Hanging locker with lined cedar wood

Mattress, inner pocketed spring

Mirror, with teak frame

Master Head

Bi-fold Acrylic shower door

Countertop and sink, cultured marble

Exhaust blower, 12 volt

Faucet, single lever

Mirror with teak frame

Shower with drain pump, 12 volt

Shower stall, separate, with ceramic tile flooring

VacuFlush toilet

Toilet paper holder

Toothbrush holder

Towel rack, stainless steel

Guest Stateroom

Berths - twin singles

Bureau with drawers

Hanging locker with lined cedar wood

Mattress, inner pocketed spring

Mirror

Panel, padded with teak frame

Guest Head

Exhaust blower, 12 volt

Countertop and sink, cultured marble

Faucet, single lever

Mirror with teak frame

Shower and head with ceramic tile flooring

VacuFlush toilet

Toilet paper holder

Toothbrush holder

Towel rack, stainless steel

Engines / Mechanical Equipment

Twin Caterpillar C-12 705hp diesel engines with Twin Disc MGX 5114 A Gears

Ball valve on all thru hulls above waterline, bronze

Bilge pump, manual

Drip pans under engines

Engine controls, single lever mechanical throttle and gear shift controls, electrical

Engine raw water intake strainers

Engine room faucet, fresh water

Engine room platform FRP

Engine room sound insulation

Exhaust system, seawater cooled, with mufflers

Fire extinguisher, with engine shutdowns, generator and override control

Fuel filters, Racor water separators on each engine (Duplex) and generator (single)

Fuel tank, Auxiliary, FRP, baffled

Fuel tank, Main, FRP, baffled

Gas/water separator on generator exhaust system

Propellers, nickel-aluminum-bronze, dynamically balanced

Rudders, stainless steel

Seacocks on engine raw water inlets

Safety seacocks on engine raw water inlets

Shafts, Ternet

Shaft logs with dripless shaft seals

Steering wheel stainless steel with teak trim

Steering with power assisted hydraulic

Struts, bronze with rubber bearings

Sole, engine room, teak slats

Water tanks, stainless steel, painted

Electrical Equipment

AC distribution panels, 120 60 HZ

Air-conditioning, reverse cycle at lower deck only

Air horn, Kahlenberg

Alternator, each engine, 12 volt

Alternator, generator, 12 volt

Alarm panel, single station, with Engine Oil Pressure and Temperature, Bilge Pumps

On, Generator On, Loss of Cooling Water, Engine Room Lights On

Batteries, AGM glass mat with FRP boxes, lids and straps, 2 x 8D engine starting, 2

x 8D, House, 1 x 2D Generator starting

Battery charger, automatic, 12 volt 50 amp

Battery condition indicator

Battery switch, disconnect

Battery switch, emergency paralleling with momentary switch

Bilge pumps (3), automatic, 12 volt

Bonding system

Carbon Monoxide Detector in sleeping areas and salon

Control panels, horn, anchor winch, trim tabs

DC distribution panels, 12/24 volt

Electrical actuator for center windshield 12V

Engine room blowers, 12 volt

Engine room lights, 12 volt and AC florescent lights 110V 60Hz

Engine gauges and instrumentation electronic (CAT MPD)

Engine start/stop single station with keys

Extra breaker panel with eight circuit breakers

Fresh water system, pressurized, 12 volt

Fuel transfer pump, 12 volt

Galvanic isolator

Generator, with sound shield, diesel ONAN 13.5 KW e-QD for 60 Hz with sound shield

Helm outlet, 12 volt

Holding tank discharge pump, 12 volt

Level indicator panel, holding tank

Navigation lights, 12 volt

Oil change kit, 12 volt

Outlets, galley, engine room and heads, GFCI protection, 120 volts 60 HZ

Rudder angle indicator, 12 volt

Shore power inlet aft, AC 50 AMP 120/240 volt

Stereo - Bose Lifestyle 18 music system with five jewel cube speakers

Tank gauges for fuel and water, 12 volt Centroid, with Computank Display

TV/Phone inlet aft

Telephone outlets

Water heater, 20 gal 120 volts Windshield wipers, (3) 12 volt with speed control, autoparking and washers Wiring, marine-grade tin-plated copper

Remarks

MOXIE is the finest Grand Banks Eastbay 49 ever built. Every feature of each area of the boat was upgraded to another level in great detail compared to any other Eastbay 49' built to date. The custom factory details and options specified by her knowledgeable owners were based on their extensive knowledge and experiences during their vast boating lives. There has been no expense spared in keeping her maintained to the highest degree. From her bilge areas to her top sides, MOXIE is in mint condition and the finest Eastbay 49 available.

Exclusions

Owner's personal items. A complete list will be provided upon request.

Exclusions

Owner's personal belongings.

Disclaimer

The Company offers the details of this vessel or yacht in good faith but cannot guarantee or warrant the accuracy of this information nor warrant the condition of the vessel. A buyer should instruct his representatives, agents, or his surveyors, to investigate such details as the buyer desires validated. This vessel or yacht is offered subject to prior sale, price change, or withdrawal without notice.

PHOTOS

Cockpit



Cockpit



Cockpit



Side deck



Bow



Bow



Helmdeck



Helmdeck



Helmdeck - TV drop down



Helmdeck - TV in custom cabinet



Helm Station



Helm Station



Helmdeck



Helmdeck



Helmdeck - custom A/C pillar



Helmdeck - custom A/C pillars



Salon



Salon



Galley



Galley



Companionway



Master Stateroom - fwd



Master Stateroom - fwd



Master Head



Guest Stateroom



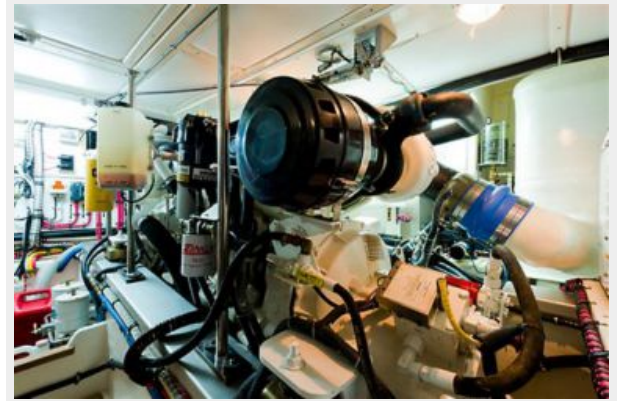
Guest Head



Engine Room



Engine Room



Engine Room



Transom



CONTACTS

Andrey Shestakov, leading yacht broker of the sales department of Shestakov Yacht Sales Inc. Shestakov Yacht Sales Inc., the official representative of the Miami/Fort Lauderdale FL headquarters.

Contact details

Email: andrey@shestakovyachtsales.com

Web: shestakovyachtsales.com/en/

Telephones

USA: +1(954)274-4435

Office hours

Monday – Saturday: **9:00 - 21:00** EDT

Sunday: **closed**

Address



Harbour Towne Marina, 850 NE 3rd St,
STE 213, Dania, FL 33004