

OUR TRADE — FERRETTI



Builder: FERRETTI

Year Built: 2011

Model: Motor Yacht

Price: PRICE ON APPLICATION

Location: United States

LOA: 75' 0" (22.86m)

Beam: 19' 2" (5.84m)

Max Draft: 6' 0" (1.83m)

Cruise Speed: 23 Kts. (26 MPH)

Max Speed: 32 Kts. (37 MPH)

Our experienced yacht broker, Andrey Shestakov, will help you choose and buy a yacht that best suits your needs **OUR TRADE — FERRETTI** from our catalogue. Presently, at Shestakov Yacht Sales Inc., we have a wide variety of yachts available on our sale's list. We also work in close contact with all the big yacht manufacturers from all over the world.

If you would like to buy a yacht **OUR TRADE — FERRETTI** or would like help answering any questions concerning purchasing, selling or chartering a yacht, please call **+1(954)274-4435**

TABLE OF CONTENTS

TABLE OF CONTENTS	2
SPECIFICATIONS	4
Overview	4
Basic Information	4
Dimensions	4
Speed, Capacities and Weight	4
Accommodations	5
Hull and Deck Information	5
Engine Information	5
DETAILED INFORMATION	6
Accommodations	6
Aft Deck	6
Salon/Dining	6
Galley	6
Master Stateroom	6
Master Head	6
VIP Stateroom	6
Guest Stateroom/Port	7
Guest Stateroom/Starboard	7
Lower Companionway	7
Crew Area	7
Lower Helm	7
Fly Bridge	7
Electronics	8
Engineer Room	8
Tender & Toys	8
Misc. Upgrades	8
Remarks	8

Exclusions	8
Disclaimer	8
PHOTOS	10
CONTACTS	24
Contact details	24
Telephones	24
Office hours	24
Address	24

SPECIFICATIONS

Overview

PRICE JUST REDUCED \$200,000!! LOWEST HOUR 75' available!!

Easy to show. Located in Fort Lauderdale near airport and downtown.

Many CUSTOM FEATURES.

Tender and waverunner,

spare props, Eskimo ice machine, water maker..... Meticulously maintained by full time captain.

Owner wants her sold....BRING OFFERS!!!!

Basic Information

Category: Motor Yacht

Sub Category: Flybridge

Model Year: 2011

Year Built: 2011

Country: United States

Vessel Top: Hardtop

Dimensions

LOA: 75' 0" (22.86m)

Beam: 19' 2" (5.84m)

Max Draft: 6' 0" (1.83m)

Speed, Capacities and Weight

Cruise Speed: 23 Kts. (26 MPH)

Max Speed: 32 Kts. (37 MPH)

Displacement: 126986 Pounds

Water Capacity: 262 Gallons

Fuel Capacity: 1453 Gallons

Accommodations

Total Cabins: 4

Sleeps: 8

Total Heads: 4

Crew Cabin: 3

Hull and Deck Information

Hull Material: Fiberglass

Deck Material: Fiberglass

Hull Configuration: Planing

Engine Information

Engines: 2

Manufacturer: MTU

Model: 10V2000CR

Fuel Type: Diesel

DETAILED INFORMATION

Accommodations

This 75' Ferretti features accommodations for eight owners/guests in four staterooms + accommodations for three crew.

Aft Deck

- Access to crew quarters - Aft deck seating - Aft deck table - Removable flat screen TV on custom mount - Control station - Teak flooring - Access to Fly Bridge - Port & starboard aft winches - * Added platform for garage with prop housing - * Aft Deck privacy curtains - * MarQuipt ladder holder **Completed within past 12 months*

Salon/Dining

- 42" - Bose Lifestyle LS V35 2 - LED Lighting - Access to flybridge - Formal dining for eight - Large windows - Thumb locks - Leather sofas - Custom décor package - Fridge & beverage cooler - Glass/stainless steel door to aft deck - Berber carpeting in salon and dining area

Galley

- Skylight - GE Fridge 120V/240V 60 Hz - Ceramic cooktop - Miele oven Miele dishwasher - Garbage compactor - Garbage disposal - Icemaker - Amtico flooring - MB Quarter CD

Master Stateroom

- King bed - Overhead hatch above bed - Drawers under bed - Night table with lamps - Make-up table - Walk-in closet - Large hull side windows - 32" TV - Hi-Fi Bose 321 Surround system w/HD receiver - iPod docking station - Air conditioning - Anti-incendiary smoke detector - Berber carpeting

Master Head

- Custom wood sink - Toilet is separate water closet - Large oval shower - Mosaic tile - Air conditioning - Double door entry to head

VIP Stateroom

- Centerline walk-around queen bed - Large hull side windows - Hanging lockers port and starboard - Mb Quarter Cd/DVD with iPod docking station - 19" TV - Air conditioning - Anti-Incendiary smoke detector - Ensuite head - Berber carpeting

Guest Stateroom/Port

- Twin beds - Mirrored headboard - Drawers under beds - Large hullside window - Hanging locker - 19" TV - Bunk bed - TV & SAT for each bunk - DVD player - Berber carpeting

Guest Stateroom/Starboard

- Queen bed (in lieu of twin beds) - Mirrored headboard - Hanging locker - 19" TV - Mb Quarter CD - Air conditioning - Anti-Incendiary smoke detector - Berber carpeting - Ensuite head

Lower Companionway

- Padded fabric walls - Berber carpeting

Crew Area

- Miele washer/dryer - Air conditioning - Anti-Incendiary smoke detector

Lower Helm

- Furuno autopilot - Compass - FLIR Night vision - Rudder angle indicator - Ferretti navigation computer - (2) Furuno radar/plotter 3D - Furuno VHF - Furuno navigation display (depth, speed, compass, temp) - Electric operated dashboard - KVH M7 SAT TV antenna with 3 receivers - L-Shaped settee with table - Lower helm can be completely closed off from the rest of the main deck

Fly Bridge

- Removable flat screen TV on custom mount - MB Quarter CD player - Furuno navigation display (depth, speed, compass, temp) - Furuno NAVNET 3D repeater on flybridge - Furuno autopilot - Furuno VHF - Furuno open array radar antenna - Electric operated dashboard - Searchlight – electrically controlled + handheld 12V - Seavision underwater Xenon lights - External table *New Garmin GPS touch screen *Fly Bridge Eisenglass *Ritchie Compass *Furuno color video sounder *Completed within past 12 months

Electronics

- *URC equipment system iPad control - *JL audio speakers (10 speakers, 3 subs) - *Wave WiFi routers *Completed within past 12 months

Engineer Room

- ARG System: (1) 4000, (1) 2000 - Maintenance free batteries - (2) 23Kw Generators (735 HRS) - Single type Racor generator filter - Voltage measuring instruments 240V - FM200 Fire-Boy - Black water connection tank pump down - Water maker - 15Hp Side power bow thruster - Isolation transformers - Air conditioning (90,000 BTU's) for staterooms & heads - Mitsubishi Gyro Stabilization - *Spare props *Completed within past 12 months

Tender & Toys

*12 ab tender *Yamaha wave runner *2 electric reels lp out letes 12v *6 rod holders *Completed within past 12 months

Misc. Upgrades

- At Rest/Zero Speed Stabilization - Night Vision camera - Kaleidescape - Canvas package - Deck flooring with non-slip surface - External sunpad & cushions with draining foam - (2) Mooring cleats at 1/3 of the boat - Rubbing strake: for spoiler & side exhaust - Life rafts USA: 6 + 6 people - (12) Life jackets

Remarks

Sealmi is truly an exceptional vessel, professionally maintained, and a pleasure to show. Current owner is moving up and anxious to structure a deal.

Exclusions

Owner's personal belongings.

Disclaimer

The Company offers the details of this vessel or yacht in good faith but cannot guarantee or warrant the accuracy of this information nor warrant the condition of the vessel. A buyer should instruct his representatives, agents, or his surveyors, to investigate such details as the buyer desires validated. This vessel or yacht is offered subject to prior sale, price change, or withdrawal

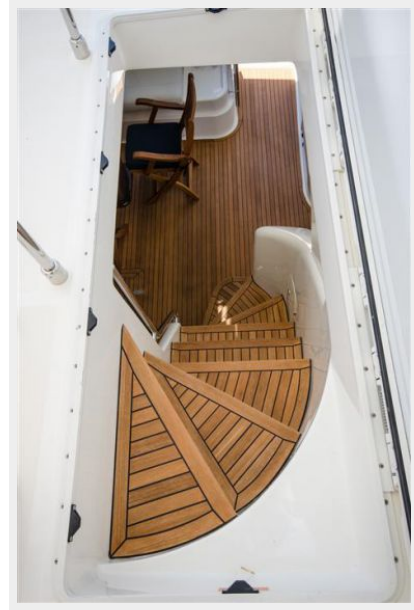
without notice.

PHOTOS







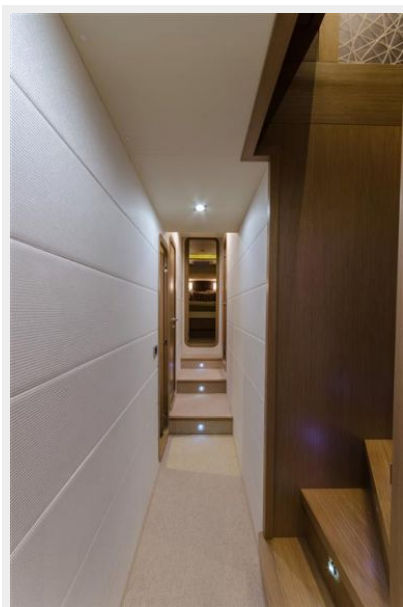




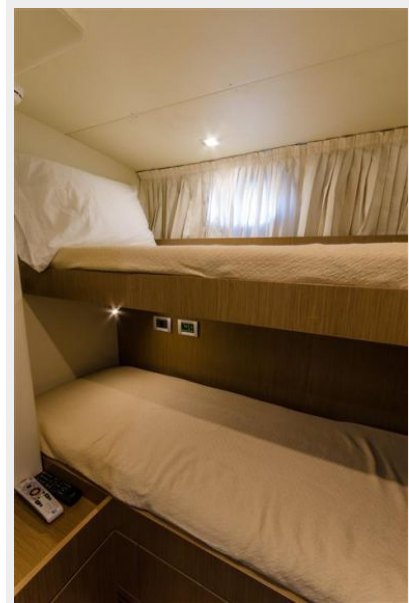


















CONTACTS

Andrey Shestakov, leading yacht broker of the sales department of Shestakov Yacht Sales Inc. Shestakov Yacht Sales Inc., the official representative of the Miami/Fort Lauderdale FL headquarters.

Contact details

Email: andrey@shestakovyachtsales.com

Web: shestakovyachtsales.com/en/

Telephones

USA: +1(954)274-4435

Office hours

Monday – Saturday: **9:00 - 21:00** EDT

Sunday: **closed**

Address



Harbour Towne Marina, 850 NE 3rd St,
STE 213, Dania, FL 33004