

VICTURA — OCEAN YACHTS



Builder: [Ocean Yachts](#)

Year Built: 1996

Model: Sport Fisherman

Price: PRICE ON APPLICATION

Location: United States

LOA: 53' 0" (16.15m)

Beam: 16' 4" (4.98m)

Max Draft: 4' 4" (1.32m)

Cruise Speed: 30 Kts. (35 MPH)

Max Speed: 35 Kts. (40 MPH)

Our experienced yacht broker, Andrey Shestakov, will help you choose and buy a yacht that best suits your needs **VICTURA — Ocean Yachts** from our catalogue. Presently, at Shestakov Yacht Sales Inc., we have a wide variety of yachts available on our sale's list. We also work in close contact with all the big yacht manufacturers from all over the world.

If you would like to buy a yacht **VICTURA — Ocean Yachts** or would like help answering any questions concerning purchasing, selling or chartering a yacht, please call **+1(954)274-4435**

TABLE OF CONTENTS

TABLE OF CONTENTS	2
SPECIFICATIONS	3
Overview	3
Basic Information	3
Dimensions	3
Speed, Capacities and Weight	3
Accommodations	4
Hull and Deck Information	4
Engine Information	4
PHOTOS	5
CONTACTS	19
Contact details	19
Telephones	19
Office hours	19
Address	19

SPECIFICATIONS

Overview

Very Clean 53 SS

Mostly Chesapeake Bay Cruised

Popular 3 Stateroom with Huge Master Forward Layout

Victura is a very nice example of Ocean Yachts popular 53 SS. She has the preferred Master forward - 3 stateroom layout. Dripless shaft seals, Release teak ladder back helm chairs, flybridge air - updated on a consistent basis. Powered by 820 HP MAN's she is rigged and ready for her next adventure. She is extremely clean and well maintained. Recent survey available.

Basic Information

Category: Sport Fisherman

Sub Category: Sport Fisherman

Model Year: 1996

Year Built: 1996

Country: United States

Fly Bridge: Yes

Cockpit: Yes

Dimensions

LOA: 53' 0" (16.15m)

Beam: 16' 4" (4.98m)

Max Draft: 4' 4" (1.32m)

Speed, Capacities and Weight

Cruise Speed: 30 Kts. (35 MPH)

Max Speed: 35 Kts. (40 MPH)

Displacement: 52000 Pounds

Water Capacity: 200 Gallons

Holding Tank: 50 Gallons

Accommodations

Total Cabins: 3

Total Heads: 2

Hull and Deck Information

Hull Material: Fiberglass

Engine Information

Engines: 2

Manufacturer: MAN

Model: D2840LE401

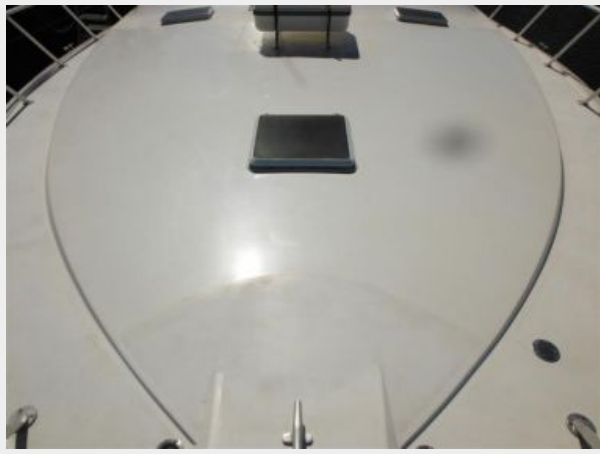
Engine Type: Inboard

Fuel Type: Diesel

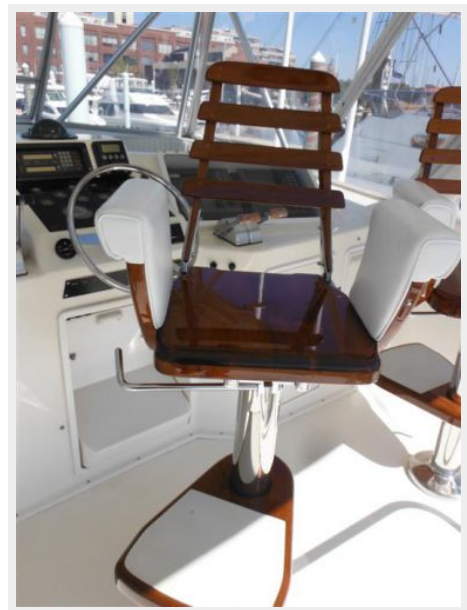
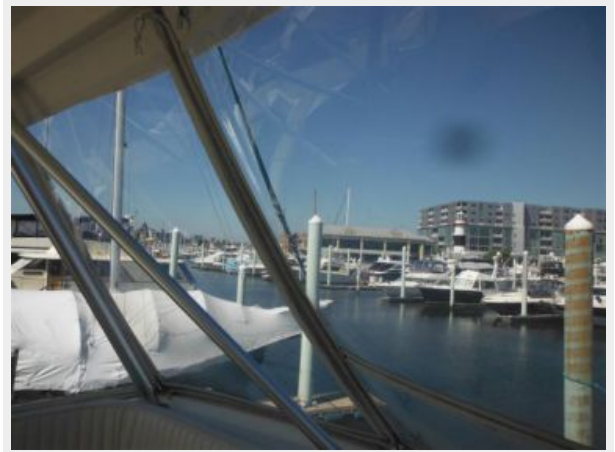
PHOTOS







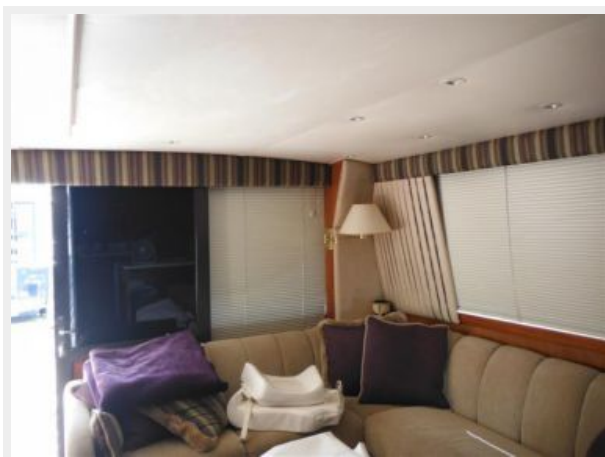


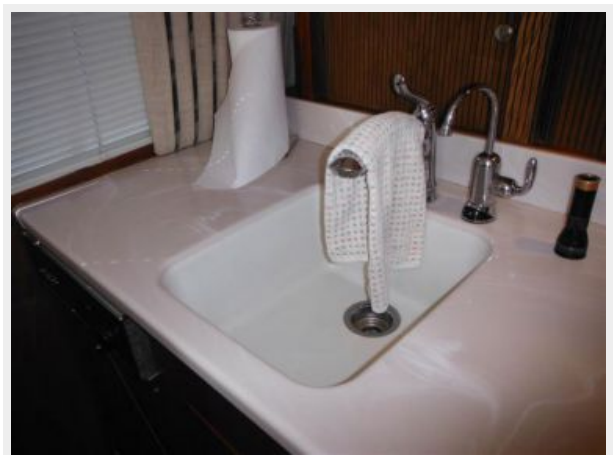
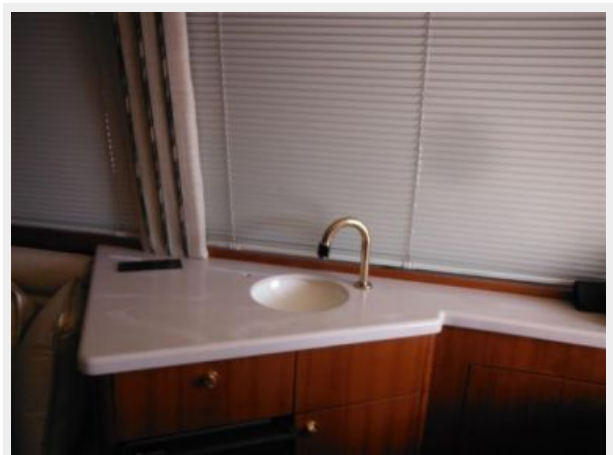






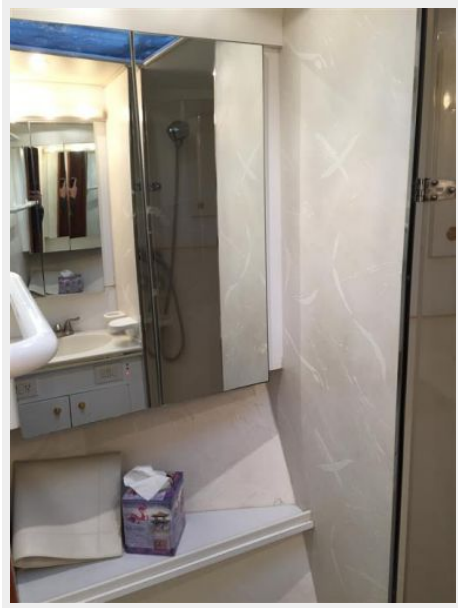


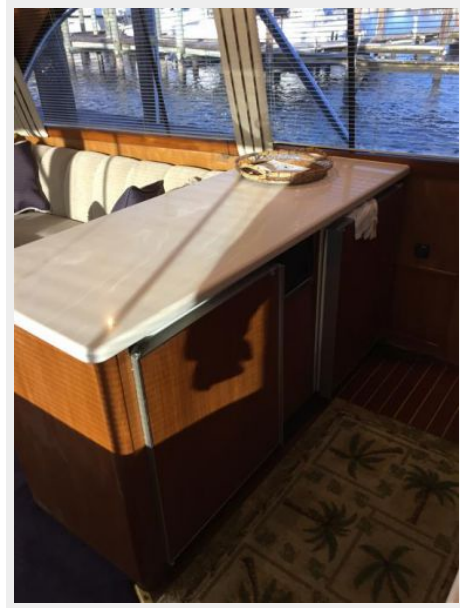












CONTACTS

Andrey Shestakov, leading yacht broker of the sales department of Shestakov Yacht Sales Inc. Shestakov Yacht Sales Inc., the official representative of the Miami/Fort Lauderdale FL headquarters.

Contact details

Email: andrey@shestakovyachtsales.com

Web: shestakovyachtsales.com/en/

Telephones

USA: +1(954)274-4435

Office hours

Monday – Saturday: **9:00 - 21:00** EDT

Sunday: **closed**

Address



Harbour Towne Marina, 850 NE 3rd St,
STE 213, Dania, FL 33004