

GAILIFF — HATTERAS



Builder: HATTERAS

Year Built: 1995

Model: Motor Yacht

Price: PRICE ON APPLICATION

Location: United States

LOA: 48' 0" (14.63m)

Beam: 16' 0" (4.88m)

Max Draft: 5' 0" (1.52m)

Our experienced yacht broker, Andrey Shestakov, will help you choose and buy a yacht that best suits your needs **GAILIFF — HATTERAS** from our catalogue. Presently, at Shestakov Yacht Sales Inc., we have a wide variety of yachts available on our sale's list. We also work in close contact with all the big yacht manufacturers from all over the world.

If you would like to buy a yacht **GAILIFF — HATTERAS** or would like help answering any questions concerning purchasing, selling or chartering a yacht, please call **+1(954)274-4435**

TABLE OF CONTENTS

TABLE OF CONTENTS	2
SPECIFICATIONS	3
Overview	3
Basic Information	4
Dimensions	4
Speed, Capacities and Weight	4
Accommodations	4
Hull and Deck Information	4
Engine Information	4
PHOTOS	5
CONTACTS	15
Contact details	15
Telephones	15
Office hours	15
Address	15

SPECIFICATIONS

Overview

Gailiff is the Nicest 48 Hatters CPMY Available

Current owners are the second since new

Chesapeake Use Only

New Interior - Spotless Engine Room

Gailiff has been owned and lightly cruised on the Chesapeake her entire life. I sold her to the current owners (2nd) in 2000 - they have consistently updated her. She is powered by 6V92's with only 671 original hours. New neutral interior soft goods, carpet and window treatments just completed. Paint is exceptional - she is truly turn key.

ACCOMMODATIONS

Two Stateroom Layout Master Aft with off set Queen Berth and Huge Lockers and Head Large Salon with L shaped Settee to Port Galley Down with Dinette Guest Stateroom and Head Forward All New Soft Goods (2014)

GALLEY

Galley Down with Dinette to Port Large Home Style Refrigerator/Freezer Electric Cook Top Microwave Convection Oven Plenty of storage Stainless Steel Sink New Wood Flooring

AFT DECK

Large Aft Deck With Full Wet Bar Refrigerator Sink Bottle Storage New Outdoor Carpeting Full Enclosure Outdoor Furniture

FLYBRIDGE

Hardtop with Full Canvas Two Helm Seats Plenty of Bench Seating Full Instrumentation

ENGINES

6V92 Detroit Diesels - 668 Original Hours - maintenance up to date

Basic Information

Category: Motor Yacht

Sub Category: Aft Cabin

Model Year: 1995

Year Built: 1995

Country: United States

Vessel Top: Hardtop

Cockpit: Yes

Dimensions

LOA: 48' 0" (14.63m)

Beam: 16' 0" (4.88m)

Max Draft: 5' 0" (1.52m)

Speed, Capacities and Weight

Displacement: 59000 Pounds

Water Capacity: 170 Gallons

Holding Tank: 60 Gallons

Fuel Capacity: 667 Gallons

Accommodations

Total Cabins: 2

Total Heads: 2

Hull and Deck Information

Hull Material: Fiberglass

Engine Information

Engines: 2

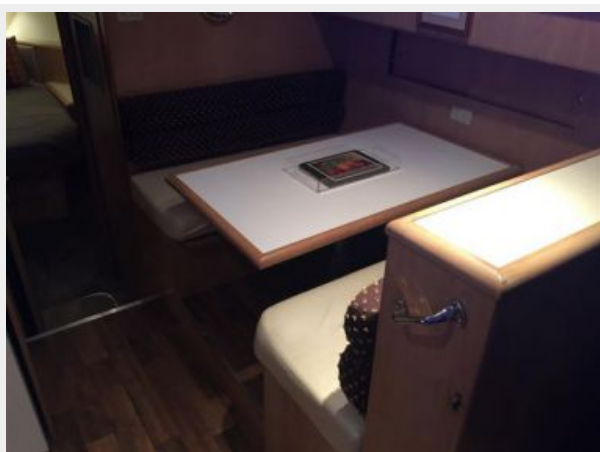
Manufacturer: Detroit Diesel

Model: 6V-92 TA

Fuel Type: Diesel

PHOTOS

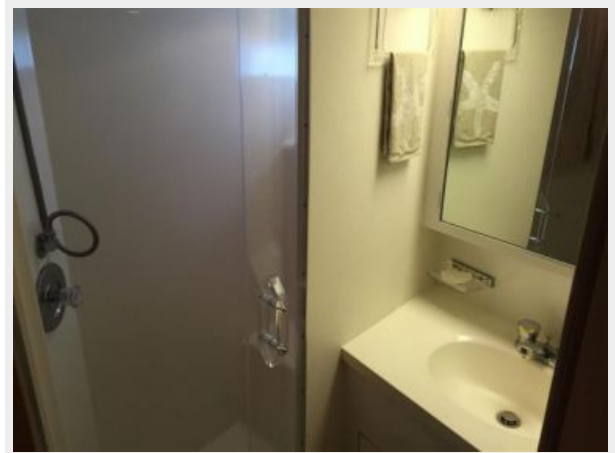




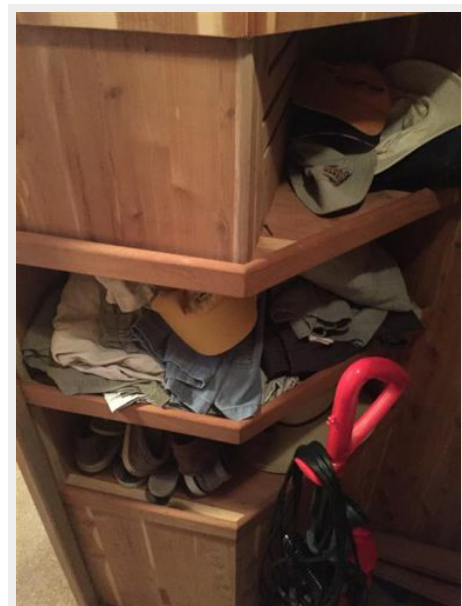
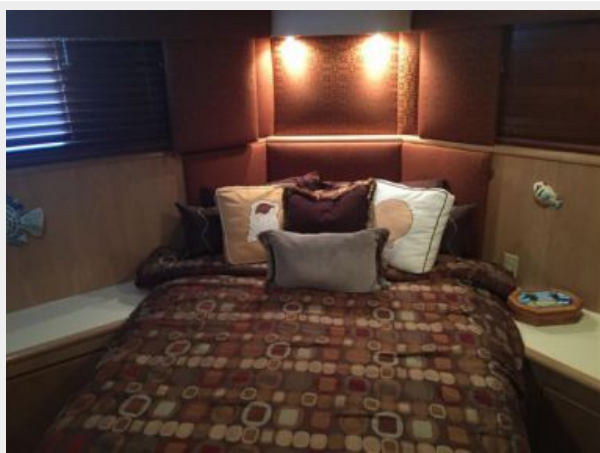


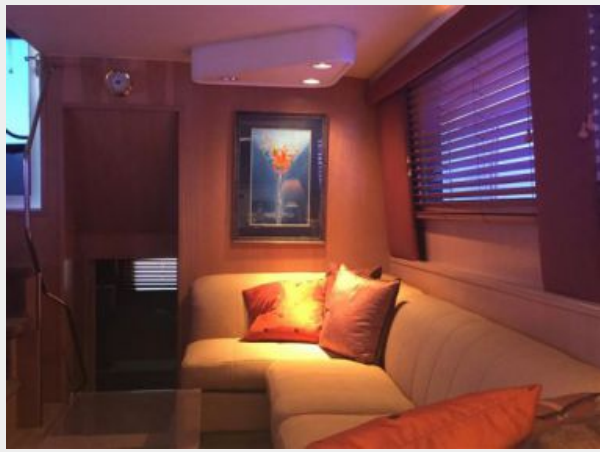














CONTACTS

Andrey Shestakov, leading yacht broker of the sales department of Shestakov Yacht Sales Inc. Shestakov Yacht Sales Inc., the official representative of the Miami/Fort Lauderdale FL headquarters.

Contact details

Email: andrey@shestakovyachtsales.com

Web: shestakovyachtsales.com/en/

Telephones

USA: +1(954)274-4435

Office hours

Monday – Saturday: **9:00 - 21:00** EDT

Sunday: **closed**

Address



Harbour Towne Marina, 850 NE 3rd St,
STE 213, Dania, FL 33004