

## ORIGINAL OWNER — CRUISERS



**Builder:** CRUISERS

**Year Built:** 2005

**Model:** Motor Yacht

**Price:** PRICE ON APPLICATION

**Location:** United States

**LOA:** 37' 0" (11.28m)

**Beam:** 13' 8" (4.17m)

**Max Draft:** 3' 2" (0.97m)

Our experienced yacht broker, Andrey Shestakov, will help you choose and buy a yacht that best suits your needs **Original Owner — CRUISERS** from our catalogue. Presently, at Shestakov Yacht Sales Inc., we have a wide variety of yachts available on our sale's list. We also work in close contact with all the big yacht manufacturers from all over the world.

If you would like to buy a yacht **Original Owner — CRUISERS** or would like help answering any questions concerning purchasing, selling or chartering a yacht, please call **+1(954)274-4435**

---

# TABLE OF CONTENTS

---

TABLE OF CONTENTS	2
SPECIFICATIONS	4
Overview	4
Basic Information	4
Dimensions	4
Speed, Capacities and Weight	5
Accommodations	5
Hull and Deck Information	5
Engine Information	5
DETAILED INFORMATION	6
Manufacturer Provided Description	6
Master Stateroom	6
VIP Stateroom 1	6
Salon	7
Galley	7
Aft Deck	7
Helm	7
Swim Platform	8
Deck Equipment	8
Electrical Equipment	8
Engine Room	8
Exclusions	8
Disclaimer	9
PHOTOS	10
CONTACTS	13
Contact details	13
Telephones	13
Office hours	13

---

Address

13

---

# SPECIFICATIONS

---

## Overview

---

- Original Owner Vessel
- 550 hrs on Optional Volvo Diesels
- Regular care by local Yacht Service company
- Excellent shape from the engine room up to the helm

### From Powerboat Guide

The boat has queen beds in both staterooms, a full dinette and galley, and a tub in the aft head compartment. This is a completely open layout with plenty of natural lighting, plenty of headroom and a very pleasant cherrywood decor. Top- side, there's sufficient space on small aft deck for several pieces of outdoor furniture, and a big U-shaped lounge on the flybridge provides seating for five or six guests across from the helm. Despite the spacious interior, the side decks are still wide enough for secure access to the bow, and molded-in steps (instead of a ladder) make boarding from the stern platform an easy matter.

---

## Basic Information

---

**Category:** Motor Yacht

**Sub Category:** Aft Cabin

**Model Year:** 2005

**Year Built:** 2005

**Country:** United States

**Fly Bridge:** Yes

---

## Dimensions

---

**LOA:** 37' 0" (11.28m)

**Beam:** 13' 8" (4.17m)

**Max Draft:** 3' 2" (0.97m)

---

## Speed, Capacities and Weight

---

**Displacement:** 21500 Pounds

**Water Capacity:** 70 Gallons

**Holding Tank:** 54 Gallons

**Fuel Capacity:** 300 Gallons

---

## Accommodations

---

**Total Cabins:** 2

**Total Heads:** 2

---

## Hull and Deck Information

---

**Hull Material:** Fiberglass

---

## Engine Information

---

**Engines:** 2

**Manufacturer:** Volvo

**Model:** TAMD 63P-A

**Engine Type:** Inboard

**Fuel Type:** Diesel

---

# DETAILED INFORMATION

---

## Manufacturer Provided Description

---

Cruisers Yachts' 375 Motoryacht offers unparalleled elegance and she has a well-deserved reputation for performance on the water. One of the significant features of the 375 is the use of molded-in steps rather than ladders. Only one step separates the walk-around from the aft deck, allowing ease of movement and creating a more relaxed atmosphere. Even better, this lower profile has not taken away from the master stateroom, which boasts 6 feet, 6 inches of headroom. Functional aft boarding steps also make for easy access from the dock. The spacious main salon, queen-size berths in each stateroom and the exceptional headroom found throughout the boat, all blend intelligently to bring the highest level of comfort and enjoyment available in an aft cabin in this class. The 13-foot, 8-inch beam not only provides more interior room, but also assures better handling and stability on the water. The forward stateroom is served by a separate head and shower, while the master stateroom aft offers the convenience of a separate molded-in bathtub with shower. The exceptionally roomy galley is designed to make light work of meal preparation with available food processor, coffee maker, microwave, large refrigerator/freezer, electric stove and ample counter and storage space. Maintaining the perfect mood on board is easy with a deluxe stereo sound system. Air conditioning and heating units also provide a comfortable temperature throughout the boat in any weather. On deck, Cruisers Yachts' 375 Motoryacht offers the experienced boater lots of room at the helm for electronics and navigation equipment, plus ample seating for the captain and guests. An ice maker is the perfect compliment to a wet bar that serves the aft deck and flybridge lounge.

## Master Stateroom

---

- **Located in the rear of the vessel**
- **AC controller**
- **Rear opening window**
- **2 hanging lockers**
- **CO detector**
- **Carpet runner**
- **Master head has VacuFlush toilet, shower/tub, sink**

## VIP Stateroom 1

---

- **Located in the bow**
- **Full length hanging locker**
- **Storage draws**
- **Reading light**
- **TV**

- **Overhead hatch**
- **VIP head with VacuFlush toilet, SS sink and shower**

---

## **Salon**

---

- **AC controller**
- **Pullout couch**
- **TV/DVD player**
- **2 speakers**
- **Electrical Panel**

---

## **Galley**

---

- **Tundra model T-80 refrigerator/freezer**
- **Sharp Carousel Microwave**
- **Black and Decker Coffee maker**
- **Princess 2 burner stove**
- **SS sink**
- **Teak/Holly floor**
- **Dinette opposite Galley**

---

## **Aft Deck**

---

- **Wet bar**
- **U-Line ice maker**
- **4 speakers w/amplifier**
- **Enclosed w/ two wing doors**
- **Screens on the canvas openings**
- **Hardtop**

---

## **Helm**

---

- **Vetus Bow Thruster**
- **Bimini top w/enclosures all in good shape**
- **Windlass controls**
- **Remote spot controls**
- **Stereo controls**
- **12V power outlet**
- **Tilt wheel**
- **Carpet**

- Seating for several on the port side
- Table
- Horn

---

## Swim Platform

---

- H/C shower
- Swim ladder
- City water inlet
- Shore power cords w/ storage box
- Electrical outlet
- Rack storage for 4 fenders

---

## Deck Equipment

---

- Windlass with deck and helm controls
- Chain/line
- Remote spotlight
- Windshield cover

---

## Electrical Equipment

---

- Onan Generator
- 2, 30 AMP shore power cords
- Battery Charger
- Bow Thruster
- Tank Watch 4 system

---

## Engine Room

---

- Twin 370 HP Volvo TAMD63P-A diesels 548 hrs 3-25-15
- Reverso oil system
- Racor filters
- Professionally maintained

---

## Exclusions

---

Owner's personal belongings.



## Disclaimer

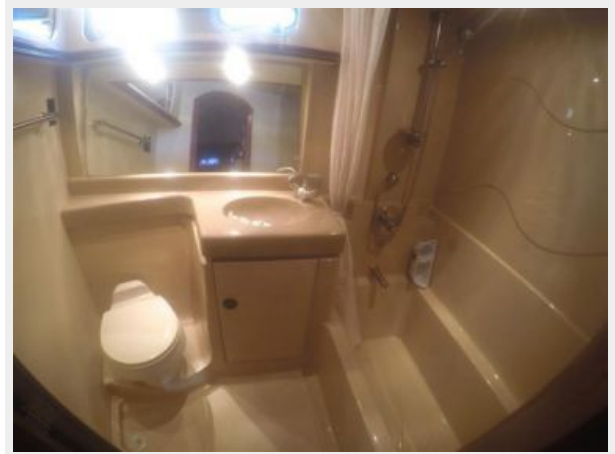
---

The Company offers the details of this vessel or yacht in good faith but cannot guarantee or warrant the accuracy of this information nor warrant the condition of the vessel. A buyer should instruct his representatives, agents, or his surveyors, to investigate such details as the buyer desires validated. This vessel or yacht is offered subject to prior sale, price change, or withdrawal without notice.

# PHOTOS







---

# CONTACTS

---

Andrey Shestakov, leading yacht broker of the sales department of Shestakov Yacht Sales Inc. Shestakov Yacht Sales Inc., the official representative of the Miami/Fort Lauderdale FL headquarters.

---

## Contact details

---

Email: [andrey@shestakovyachtsales.com](mailto:andrey@shestakovyachtsales.com)

Web: [shestakovyachtsales.com/en/](http://shestakovyachtsales.com/en/)

---

## Telephones

---

USA: +1(954)274-4435

---

## Office hours

---

Monday – Saturday: **9:00 - 21:00** EDT

Sunday: **closed**

---

## Address

---



Harbour Towne Marina, 850 NE 3rd St,  
STE 213, Dania, FL 33004