

REEL ESCAPE — VIKING



Builder: VIKING

Year Built: 2002

Model: Sport Fisherman

Price: PRICE ON APPLICATION

Location: United States

LOA: 48' 0" (14.63m)

Beam: 16' 6" (5.03m)

Min Draft: 4' 0" (1.22m)

Our experienced yacht broker, Andrey Shestakov, will help you choose and buy a yacht that best suits your needs **Reel Escape — VIKING** from our catalogue. Presently, at Shestakov Yacht Sales Inc., we have a wide variety of yachts available on our sale's list. We also work in close contact with all the big yacht manufacturers from all over the world.

If you would like to buy a yacht **Reel Escape — VIKING** or would like help answering any questions concerning purchasing, selling or chartering a yacht, please call **+1(954)274-4435**

TABLE OF CONTENTS

TABLE OF CONTENTS	2
SPECIFICATIONS	5
Overview	5
Basic Information	5
Dimensions	5
Speed, Capacities and Weight	5
Accommodations	5
Hull and Deck Information	6
Engine Information	6
DETAILED INFORMATION	7
Accommodations	7
Salon	7
Galley	7
Dinette	7
Master Stateroom Forward	7
Master Head	7
Guest Stateroom	8
Guest Stateroom Head	8
Electronics & Navigation Equipment	8
Electrical System	8
Engine Room	8
Flybridge	8
Cockpit	9
Deck Equipment	9
Broker Comments	9
Exclusions	9
Exclusions	9
Disclaimer	9

PHOTOS	10
Salon	10
Salon	10
Salon	10
Galley/Dinette	10
Salon	10
Salon Dinette	10
Dinette	11
Dinette	11
Galley	11
Galley	11
Master Stateroom	11
Master Stateroom	11
Head	12
Head	12
Head	12
Guest Stateroom	12
Washer / Dryer	13
Guest Stateroom	13
Flybridge	13
Flybridge	13
Flybridge electronics	13
Flybridge	13
Flybridge seating	14
Engine room	14
Engine room	14
Aft deck	14
Aft deck	14
Reel Escape 48 Viking 2002	15

CONTACTS	16
-----	-----
Contact details	16
-----	-----
Telephones	16
-----	-----
Office hours	16
-----	-----
Address	16
-----	-----

SPECIFICATIONS

Overview

This is a rare opportunity to own a pristine 48 Viking with the rare Series 60 (forever engines) . No smoky MANs. Pristine interior with Luxury Edition Package of Ultra leathers and Custom Carpet. All non skid, bow and house sides painted 2 years ago. Maintained to highest standards by her owner.

Basic Information

Category: Sport Fisherman

Sub Category: Convertible

Model Year: 2002

Year Built: 2002

Country: United States

Vessel Top: Hardtop

Fly Bridge: Yes

Dimensions

LOA: 48' 0" (14.63m)

Beam: 16' 6" (5.03m)

Min Draft: 4' 0" (1.22m)

Speed, Capacities and Weight

Displacement: 56500 Pounds

Water Capacity: 174 Gallons

Holding Tank: 50 Gallons

Fuel Capacity: 1013 Gallons

Accommodations

Total Cabins: 2

Total Heads: 2

Hull and Deck Information

Hull Material: Fiberglass

Engine Information

Engines: 2

Manufacturer: Detroit Diesel

Model: Series 60

Engine Type: Inboard

Fuel Type: Diesel

DETAILED INFORMATION

Accommodations

Entering the salon from the cockpit the L-shaped settee is located on the port side. Storage below. To Starboard are the breaker panels, entertainment systems and storage. Moving forward is the galley and dinette is to starboard with teak table. Storage below. Opposite is the Full Galley. Continuing down the companionway, the master stateroom with walk around queen berth and ensuite head is forward. Guest stateroom is amid ship with upper and lower large single berths. Private entrance to head. The Guest head is accessible from the companionway.

Salon

- Amtico teak and holly floor at salon entrance • Dimmers on overhead lights • Teak trim at carpet
- Custom wrapped valences • Silhouette blinds, including aft bulkhead and door. By Hunter Douglas • Carpet, custom, hi end recently installed in entire boat • Entertainment system • 42" JVC TV • Stereo • CD / DVD player • L-shaped sofa in Ultra Suede leather, beige with storage below • Coffee table, teak with Marlin inlay, Hi Lo • Storage • Air conditioning controls, SMX ir • Teak interior, High Gloss, in flawless condition • Throw pillows • Luxury edition décor • Upgraded Ultra leather

Galley

- (2) Sub Zero refrigerator drawers • (2) Sub Zero freezer drawers • Electric stove top / 3 burner Kenyon with cover • Exhaust fan • Garbage disposal • Microwave / convection oven, Sharp • Sink, recessed with Grogh faucet • Cabinets with long / locking 4 sliding shelves • Storage, everywhere • Amtico teak and holly floor • Corian counters top, oatmeal

Dinette

- Teak dinette table • U- shaped seating with storage • Ultra leather dinette seating, in dark blue

Master Stateroom Forward

- Walk around queen berth • Padded headboard and mirrored forepeak bulkhead • Shelving around headboard perimeter • End tables • Carpet, custom • Ensuite head • TV 19" Flat Screen • Stereo • Custom wall paper • Luxury décor • Air conditioning controls, SMX ir • Drawers under berth • Storage under berth • Storage port and starboard • Hanging locker, large two-door

Master Head

• Amtico teak and holly floor • Sink with faucet • Head, Vaccuflush • Shower with stall • Vanity • Custom wall paper • Medicine cabinet, double doors, mirrored • Towel Rack • Towel hook • Mirror • Corian counter

Guest Stateroom

• Upper / lower large single berths, Athwartship • Hanging locker • Carpet, custom • Air conditioning, SMX ir • Luxury decor • TV, flat screen Sharp 20" • Ensuite Head

Guest Stateroom Head

• Toilet, Vaccuflush • Sink with faucet • Shower with stall • Vanity • Amtico teak and holly floor • Mirrored medicine cabinet • Corian counter • Washer/Dryer, Amana in companion way

Electronics & Navigation Equipment

• Northstar M121 GPS/Plotter 962 XD • Furuno 7062 Radar/4' array • Furuno FCV 1100 Sounder • Garmin 5212 GPS/Plotter • Furuno RD 30 Tridata • Autopilot, Simrad AP 20 • VHF, ram mic in salon • VHF Standard Horizon, Intrepid • VHF Icom 604 • Search lite, ITT, jabsco w/ remote • KVH Trac Vision w/ 2 Sony receivers • Custom Electronics Mast • Cellular antenna • DDEC ECM engine display monitors • Viking alarm system

Electrical System

• Onan 20 kw Genset w/ 2350 hours -2/15 • Glendinning cable master • Battery charger • Nav lights • Spreader lights/ recessed in hardtop • Accent lighting • Battery parallel switch

Engine Room

• Detroit Diesel Series 60 @ 825 HP with approx.1990 hours as of 2/2015 • Trolling valves • Digital tachs, gauges start and stop controls • Fuel priming system • Voltage stabilizer • Oil change system • Water heater • Racor Fuel filters • Fire Systems • Eskimo Ice Chipper

Flybridge

• Fiberglass hardtop w/ 300 watt molded in quartz lights • Aluminum, white powder coated • Overhead handrails • Recessed lighting • Glendinning single lever controls for pod • Custom helm pod • Rupp 3X spread outriggers • 6 rod rocket launcher on aft rail • 2 Overhead teaser reels, mechanical • 4 sided enclosure of 40 gauge Strataglass w/ 60 gauge Makrolon

center/white Stamoid trim • Electronic trolling valves • 2 Release Helm Chairs Varnished ladder back w/ cushions and covers (black) • Seating along stbd side and in front of helm • Forward storage • Storage for rods, etc. under Flybridge seating

Cockpit

• Cool box step box at salon door • Cockpit freezer • Tackle center with prep and drawers • Rupp Outriggers w/ triple spreaders • Fresh and saltwater washdown • Live well in cockpit deck • In deck fish box • Engine room entrance • Transom door and gate • Cockpit coaming bolster • 6 rod holders, flush mount • Rocket Launcher w/ 4 rod holders, Pompanette, white • Fighting Chair, Pompanette, white • Stepbox

Deck Equipment

• Bow rails, Aluminum • No bow pulpit • Anchor storage in bow accessible w/ twist lock door • Anchor, Danforth fortress stored • Safety side rails • Oval exhaust outlets • Bottom soda blasted and barrier coat applied, bottom job 8/14

Broker Comments

This is a rare opportunity to own a pristine 48 Viking with the rare Series 60 (forever engines). No smoky MANs. Pristine interior with Luxury Edition Package of Ultra leathers and Custom Carpet. All nonskid, bow and house sides painted 2 years ago. Maintained to highest standards by her owner.

Exclusions

All fishing equipment, tackle, life raft, and GPS sounder.

Exclusions

Owner's personal belongings.

Disclaimer

The Company offers the details of this vessel or yacht in good faith but cannot guarantee or warrant the accuracy of this information nor warrant the condition of the vessel. A buyer should instruct his representatives, agents, or his surveyors, to investigate such details as the buyer desires validated. This vessel or yacht is offered subject to prior sale, price change, or withdrawal without notice.

PHOTOS

Salon



Salon



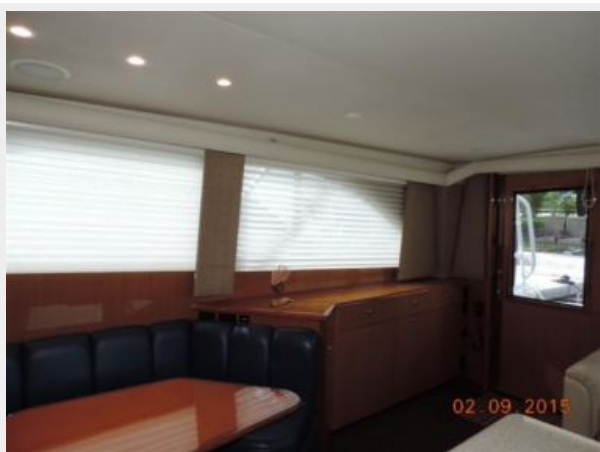
Salon



Galley/Dinette



Salon



Salon Dinette



Dinette



Dinette



Galley



Galley



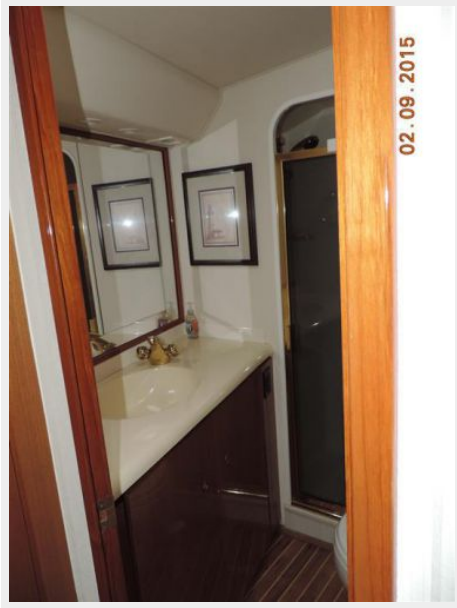
Master Stateroom



Master Stateroom



Head



Head



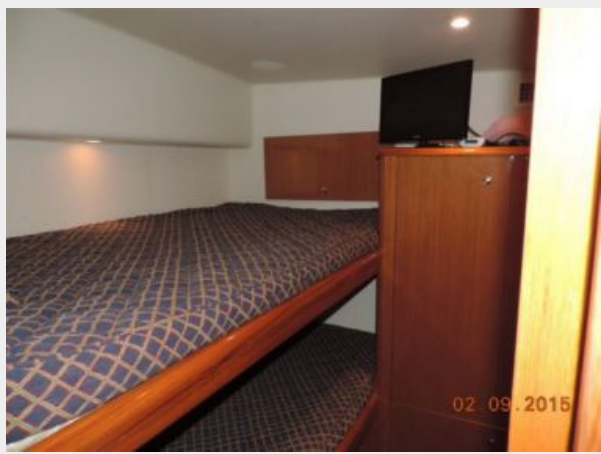
Head



Guest Stateroom



Guest Stateroom



Washer / Dryer



Flybridge



Flybridge



Flybridge electronics



Flybridge



Flybridge seating



Engine room



Engine room



Aft deck



Aft deck



Reel Escape 48 Viking 2002



CONTACTS

Andrey Shestakov, leading yacht broker of the sales department of Shestakov Yacht Sales Inc. Shestakov Yacht Sales Inc., the official representative of the Miami/Fort Lauderdale FL headquarters.

Contact details

Email: andrey@shestakovyachtsales.com

Web: shestakovyachtsales.com/en/

Telephones

USA: +1(954)274-4435

Office hours

Monday – Saturday: **9:00 - 21:00** EDT

Sunday: **closed**

Address



Harbour Towne Marina, 850 NE 3rd St,
STE 213, Dania, FL 33004