

YUT-LING — MATTHEWS



Судостроитель: MATTHEWS

Год постройки: 1973

Модель: Моторная яхта

Цена: **ЦЕНА ЯХТЫ ПО ЗАПРОСУ**

Местонахождение: United States

Длина общая: 45' 10" (13.97m)

Ширина: 14' 10" (4.52m)

Макс. осадка: 4' 0" (1.22m)

Крейс. скорость: 16 Kts. (18 MPH)

Макс. скорость: 19 Kts. (22 MPH)

Купить **YUT-LING — MATTHEWS** а также выбрать подходящую вам яхту из нашего каталога яхт вам поможет опытный яхтенный брокер Андрей Шестаков. На сегодняшний день компания **Shestakov Yacht Sales Inc.** имеет большое количество яхт в собственном списке продаж, а также тесно сотрудничает со всеми крупными яхтенными производителями по всему миру.

Для того чтобы купить яхту **YUT-LING — MATTHEWS** а также проконсультироваться по любому вопросу связанному с покупкой, продажей, чартером яхт позвоните по телефону **+7(918)465-66-44**.

ОГЛАВЛЕНИЕ

ОГЛАВЛЕНИЕ	2
ХАРАКТЕРИСТИКИ	6
Обзор	6
Основная информация	6
Размеры	6
Скорость, вместимость и масса	6
Размещение	6
Корпус и палуба	7
Информация о двигателе	7
ПОДРОБНОЕ ОПИСАНИЕ	8
Introduction	8
Vessel Walkthrough & Accommodations	8
Guest Stateroom with Head and Shower	8
Galley	8
Saloon	9
Master Stateroom and Ensuite Head w/Shower	9
Electrical System	9
Engine and Mechanical	9
Electronics & Navigation Equipment	10
Deck and Hull	10
Broker Comments	11
Исключения	11
Отказ от ответственности	11
ФОТОГРАФИИ	13
Bow Starboard Profile	13
Stern Profile	13
Aft Lounge	13
Forward Lounge/Helm	13

Passageway to Saloon	13
AC/DC Panel	13
Diagram from PowerBoat Guide	14
Trundle/Sofa Bed with storage	14
Wet Bar with IceMaker	14
New Windows & Frame	14
Galley	14
Stairs up to Raised Deck	14
Galley	15
Trundle Bed	15
Galley Stove/Oven & Sink	15
Port Bow Berth	15
Bow Stateroom Vanity	15
Starboard Bow Berth	15
Guest Head	16
Guest Stateroom Head/Shower	16
Guest Stateroom Closet	16
Bow Guest Stateroom	16
MSR Ensuite Head	17
MSR Ensuite Shower	17
MSR Closets	17
MSR Port Berth	17
MSR Starboard Beth	18
Master Stateroom	18
Combo Washer/Dryer	18
Port Engine	18
Starboard Engine	19
Engine Room	19
MSR Toilet	19

MSR Closets	19
MSR Closets	20
MSR Closets	20
MSR Storage	20
Newly installed floor	20
Master Stateroom	21
MSR Entry Door - Closed	21
MSR Lift-up stairs Access to Engine Room	21
Aft Deck	21
Starboard Side Deck (New Windows)	22
New Windshield Windows & Frames	22
Foredeck	22
New Windows & Frames	22
New Windshield Pantagraph Arms & Blades	22
New Side Windows	22
Aft Deck	23
Aft Deck	23
Windshield (center window motor)	23
Custom Swim Platform	23
Port Side Deck	23
Dash	23
Steering Station	24
Port Side Windshield	24
Stern Port Quarter	24
Starboard Profile	24
КОНТАКТЫ	25
Контактная информация	25
Телефоны	25
Время работы	25

Адрес

25

ХАРАКТЕРИСТИКИ

Обзор

By anyone's standards, a true classic flush deck motoryacht in great condition. White hull, light walnut interior...old world charm and class. Engines run great, brightwork and point look superb! OFFERS ENCOURAGED--CALL 866-369-4573 B&B/Stuart, FL

Основная информация

Тип судна: Моторная яхта

Подкатегория: Flushdeck

Модельный год: 1973

Год постройки: 1973

Страна: United States

Размеры

Длина общая: 45' 10" (13.97m)

Ширина: 14' 10" (4.52m)

Макс. осадка: 4' 0" (1.22m)

Трапы: 16' 0" (4.88m)

Скорость, вместимость и масса

Крейс. скорость: 16 Kts. (18 MPH)

Макс. скорость: 19 Kts. (22 MPH)

Вместимость воды: 85 Gallons

Вместимость сточного бака: 20 Gallons

Объем топливного бака: 400 Gallons

Размещение

Всего кают: 2

Всего ком. состава: 2

Корпус и палуба

Материал корпуса: Fiberglass

Комплектация корпуса: Monohull

Отделка корпуса: Aluminum

Информация о двигателе

Производитель: Detroit Diesel

Модель: 671N

Тип двигателя: Inboard

Тип топлива: Diesel

ПОДРОБНОЕ ОПИСАНИЕ

Introduction

The legacy of the Matthews Company is world renowned. The Halmatic Company of England produced the fiberglass hulls patterned after the Matthews 45' wooden hull built in Port Clinton, Ohio. These fiberglass hulls were then shipped to the Port Clinton facility where the cabins and interiors were built and assembled. One of the first all fiberglass produced boats, the Matthews 46 is a popular hull produced from 1969 to 1975. Her current owners have spent over \$100,000 on mechanicals, windows, etc. This is a wonderful boat; professionally maintained by a knowledgeable Captain and Chief Engineer over the years. She is an elegant vessel and she continues to retain her character, workmanship & reputation.

Vessel Walkthrough & Accommodations

Traditional Flush Deck, double cabin layout; wonderful Aft Deck, fully enclosed with Eisenglass and safety glass, with soft wing doors and helm station. From the Aft Deck, down six stairs to the large Saloon. Forward is two bunk berths, aft to port is the guest head with vanity, and there is a large closet to starboard. The Saloon is up 4 steps and is a large area with lots of seating. The Galley is aft of the Saloon to port and is "U" shaped with a freezer/refrigerator, sink, lots of storage, stove and oven. Aft and down 4 steps is the Master Stateroom with two large twin beds, washer/dryer, the Ensuite Head with stall shower is to starboard, while to port is a very large hanging locker with a vanity aft of that. Aft are port and starboard large berths; There is a dresser between berths. LOTS of large closet and drawer space.

Newly installed wood flooring.

Guest Stateroom with Head and Shower

Guest stateroom is forward with custom fitted elegant comforters, built-in dresser/bureau, large hanging closet, storage under berths & private head with vanity to aft of port berth.

Galley

Galley is on the portside and aft in the Saloon (Galley up configuration). It features a great deal of counter-top space with a standup refrigerator/freezer. There is a stainless steel single sink facing directly to port with a great view out the port sliding window. Aft is the three burner 110v electric Princess stove with oven and lots of overhead cupboard storage. Includes toaster oven. The counter can be extended with the hinged swing-up cutting board.

Saloon

Down 6 steps from the Aft Deck is seating for 6 with the light walnut paneled Saloon. There is fantastic natural lighting/ventilation; a very comfortable area to entertain. On port is a sofa with 3-drawer storage that converts to a double bed. There are several cabinets for storage. It is fully carpeted with a nice tasteful throw rug. There is a wet bar forward to starboard with ice maker, and two wicker chairs on starboard with a wicker box storage table separating them.

Master Stateroom and Ensuite Head w/Shower

Owners' Stateroom is aft & down from the Saloon. This is a huge stateroom; two oversized twin berths w/built-in six drawer dresser/bureau between berths, one large drawer at the foot of each berth (with a Splendide washer/dryer above on the starboard side), dresser and desk on the port. There are two full closets & ensuite head & shower.

The beds have matching tasteful modern comforters and there is a newly installed wood floor.

Electrical System

- Onan 8Kw Genset, fresh water cooled, low hours; hot end rebuilt, engine completely serviced
- Shorepower Dual Hookups (50A each) - (Stbd not working)
- One 50amp shore power cord
- Batteries (2) 8D (new 12/09)
- Battery Charger Charles Industries model C-Charger
- Full 12VDC Panel
- Full 125VAC Panel
- Cruiseaire A/C's with reverse cycle; recently serviced
- Bilge Pumps
- Bilge Blower

Engine and Mechanical

- Twin Detroit Diesel Engines, model 671 Naturals, 250 HP, hours unknown-however port rebuilt in 11/1996 (records show about 1,000 hours SMOH), starboard in 11/2002 (records show less than 450 SMOH), fresh water cooled. Engines completely serviced in 2013 - 2014
- Racor fuel filters installed
- Morse cable controls - two throttle and two shifting
- Hynautic hydraulic steering
- Bennett trim tabs
- 1 1/2" SS prop shafts

- Cruisair Heat and Air in three zones with controls located in the Guest Suite, Main Saloon, and Master Stateroom. Serviced in 2013
- Fuel tankage two 200 gallon stainless steel mounted on port and starboard under MSR beds
- Water tank is aluminum and 85 gallons (2000)
- Fresh water house pump
- Holding tank is one 20 gallon polyethylene tank (new 2002 & has TankWatch)
- (2) Sealand VacuFlush toilets with Lectra/San treatment device - all rebuilt in 2008
- Three Options for Head discharge
- (A) Direct overboard with treatment
- (B) Holding Tank - macerator pumpout overboard
- (C) Holding Tank - Deck pump out

Electronics & Navigation Equipment

- Classic Ships Wheel with SS ring
- Full set of engine gauges at helm - new 2013
- Trim tab rocker switches
- Dual shifter and throttle controls - re-chromed in 2014
- Rudder angle indicator
- Compass- Ritchie 6"
- Furuno Radar - 24 mile
- Standard Horizon VHF radio
- Depth Finder - Benmar flashing sonar
- Sea Ranger PL-1B depth sounder
- Apelco Hailer
- Bell
- Electric horn
- 10" Overhead mechanical spotlight (needs re-wiring)
- (3) Windshield wipers - new wiper arms and blades
- Stereo and TV in Saloon
- Chelsea Clock
- Chelsea Barometer/Temp

Deck and Hull

- Ideal Windlass - power up/freefall down (new in 2014)
- (2) Danforth anchors, 30' chain and 300' rode (estimated)
- SS Bow deckplate with chocks
- SS Sampson post
- SS bow and side rails
- Side stanchions w/lifelines

- Fiberglass non-skid deck
- Full aft deck enclosure new in 2003-excellent condition
- Cushions for front deck seating new in 2003
- Furniture on aft deck includes 4 patio chairs and round glass table
- Set of Edison (removable) dinghy davits
- Fenders & lines
- Navigation lights
- Fiberglass Deck storage box on bow
- Power center windshield window (rebuilt, re-chromed)
- (3) Windshield wipers
- New custom swim platform with swim ladder

Broker Comments

You won't find a better example of a classic grand old motoryacht. Her brightwork is superb, her paint shines - she is well taken care of. She is tastefully decorated with soft goods, carpet, etc. She gives a warm inviting feeling. The outdoor canvas and Eisenglass are near perfect and there is Textaline on the cabin and forward Helm glass. She won't disappoint you if you are looking for a classic that will stand out at any yacht club or marina.

UPDATES IN 2012 - 2014

- Main Engines heat exchangers rebuilt; port engine blower rebuilt
- Genset's hot end rebuilt; genset completely serviced (heat exchanger, raw water pump, etc.)
- All A/C's serviced
- Lectrasan serviced
- Washer/Dryer completely serviced
- All seacocks and thru-hulls replaced
- Cutlass bearing replaced
- All cabin windows and frames replaced
- All windshield windows and frames replaced
- New oversized swim platform with ladder
- Specially designed exhaust system
- New dash gauges and rechromed shifter/throttle housings at dash
- New Windlass

Исключения

При продаже яхты исключаются личные вещи владельца.

Отказ от ответственности

Компания предоставляет описание судна или яхты добросовестно, но не может гарантировать точность этой информации, а также не ручается за техническое состояние. Покупатель должен проинструктировать своих агентов или оценщиков исследовать представленную информацию более подробно, по собственному желанию. Продажа судна или яхты, изменение цены или снятие с продажи будет происходить без предварительного уведомления.

ФОТОГРАФИИ

Bow Starboard Profile



Stern Profile



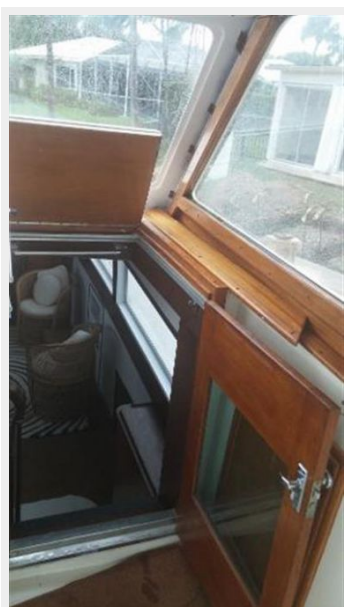
Aft Lounge



Forward Lounge/Helm



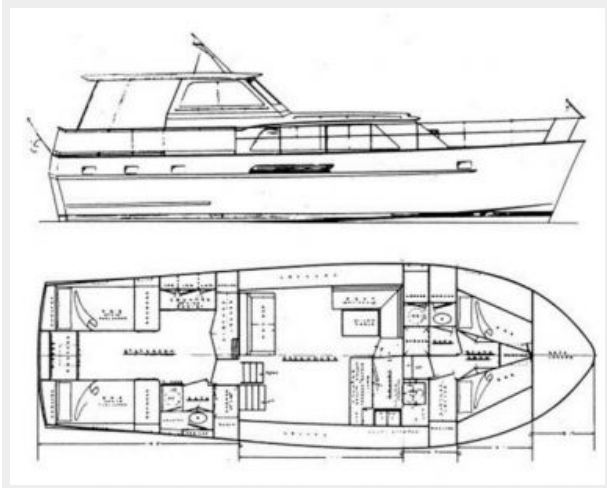
Passageway to Saloon



AC/DC Panel



Diagram from PowerBoat Guide



Trundle/Sofa Bed with storage



Wet Bar with IceMaker



New Windows & Frame



Galley



Stairs up to Raised Deck



Galley



Trundle Bed



Galley Stove/Oven & Sink



Port Bow Berth



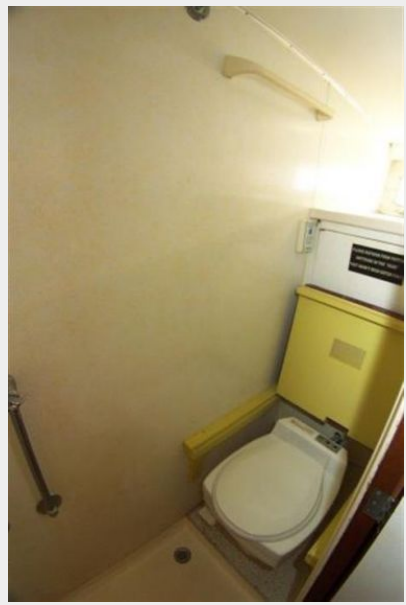
Starboard Bow Berth



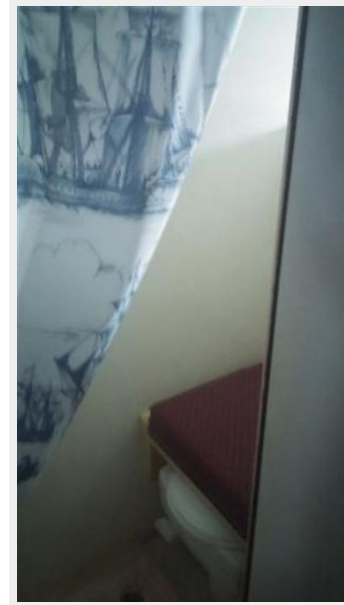
Bow Stateroom Vanity



Guest Head



Guest Stateroom Head/Shower



Guest Stateroom Closet



Bow Guest Stateroom



MSR Ensuite Head



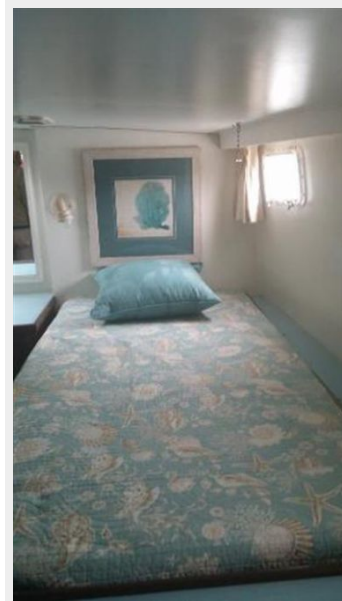
MSR Ensuite Shower



MSR Closets



MSR Port Berth



MSR Starboard Beth



Master Stateroom



Combo Washer/Dryer



Port Engine



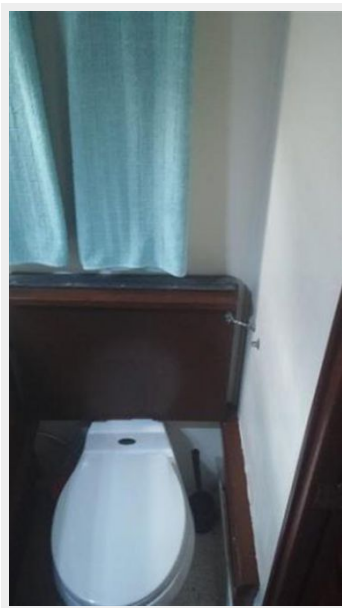
Starboard Engine



Engine Room



MSR Toilet



MSR Closets



MSR Closets



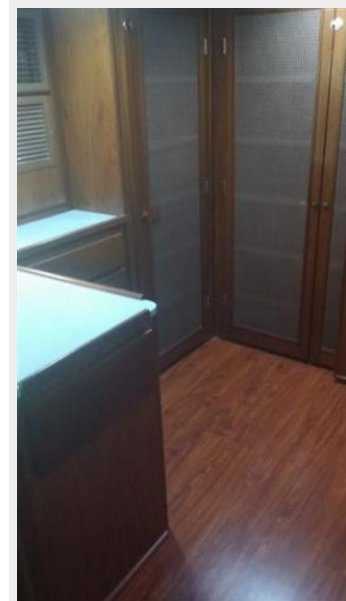
MSR Closets



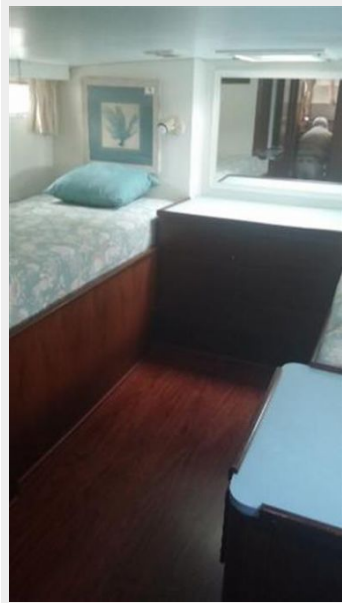
MSR Storage



Newly installed floor



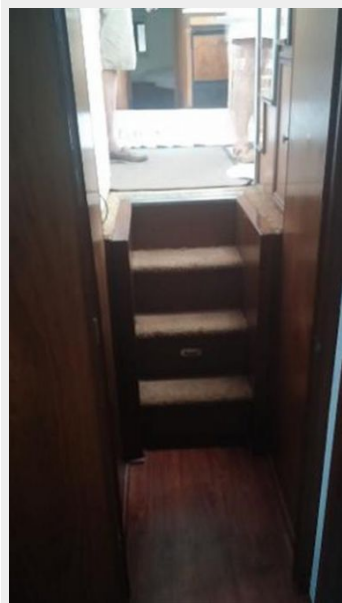
Master Stareroom



MSR Entry Door - Closed



MSR Lift-up stairs Access to Engine Room



Aft Deck



Starboard Side Deck (New Windows)



New Windshield Windows & Frames



Foredeck



New Windows & Frames



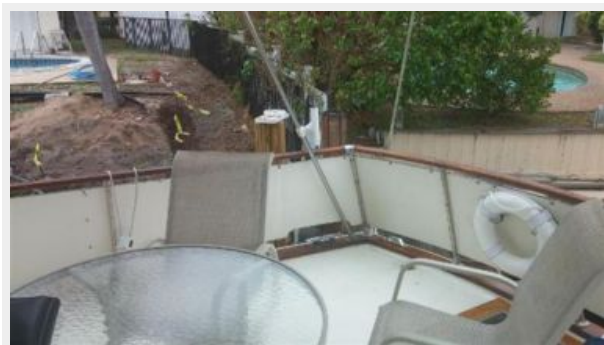
New Windshield Pantagraph Arms & Blades



New Side Windows



Aft Deck



Aft Deck



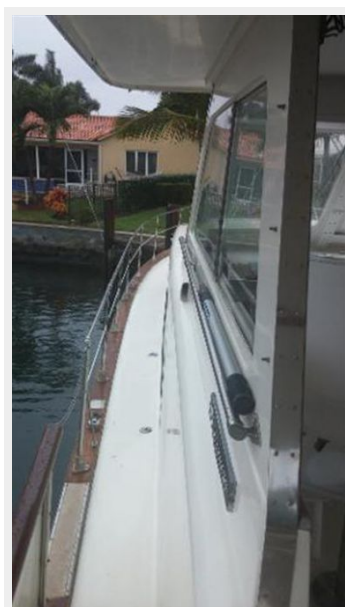
Windshield (center window motor)



Custom Swim Platform



Port Side Deck



Dash



Steering Station



Port Side Windshield



Stern Port Quarter



Starboard Profile



КОНТАКТЫ

Андрей Шестаков (Andrey Shestakov) – ведущий яхтенный брокер отдела продаж яхт и судов компании Shestakov Yacht Sales Inc. Официальный представитель Shestakov Yacht Sales Inc. для русскоговорящих клиентов в центральном офисе компании в Майами/Форт Лодердейл/Флорида/США.

Контактная информация

Email: andrey@shestakovyachtsales.com

Web: shestakovyachtsales.com

Телефоны

Краснодарский край: **+7(918)465-66-44**

США, Майами, Флорида: **+1(954)274-4435**

Время работы

Понедельник – Суббота: **9:00 - 21:00**
EDT

Воскресенье: **Закрито**

Адрес



Harbour Towne Marina, 850 NE 3rd St,
STE 213, Dania, FL 33004