

## BARLEYCORN — NAUTOR'S SWAN



**Builder:** NAUTOR'S SWAN

**LOA:** 41' 11" (12.78m)

**Year Built:** 2007

**Beam:** 12' 11" (3.94m)

**Model:** Cruising Sailboat

**Min Draft:** 7' 9" (2.36m)

**Price:** PRICE ON APPLICATION

**Location:** United States

Our experienced yacht broker, Andrey Shestakov, will help you choose and buy a yacht that best suits your needs **BARLEYCORN — NAUTOR'S SWAN** from our catalogue. Presently, at Shestakov Yacht Sales Inc., we have a wide variety of yachts available on our sale's list. We also work in close contact with all the big yacht manufacturers from all over the world.

If you would like to buy a yacht **BARLEYCORN — NAUTOR'S SWAN** or would like help answering any questions concerning purchasing, selling or chartering a yacht, please call **+1(954)274-4435**

---

# TABLE OF CONTENTS

---

TABLE OF CONTENTS	2
SPECIFICATIONS	4
Overview	4
Basic Information	4
Dimensions	4
Speed, Capacities and Weight	4
Accommodations	4
Hull and Deck Information	5
Engine Information	5
DETAILED INFORMATION	6
Broker's Comments	6
Owner's Comments	6
Construction	6
Machinery	7
Electrical Systems	8
Plumbing Systems	9
Tankage	9
Navigation Equipment	10
Domestic Equipment	10
Accommodation	11
Deck Equipment	12
Exclusions	14
Disclaimer	14
PHOTOS	15
CONTACTS	21
Contact details	21
Telephones	21
Office hours	21

---

Address

21

---

# SPECIFICATIONS

---

## Overview

---

In the spring of 2005, the New York Yacht Club approached several designers requesting a proposal for a new One Design yacht for the Club members and other sailors to enjoy traditional Corinthian racing. The boat was to be fast, fun to sail and rate well under the IRC Rule. Nautor's Swan teamed up with the German Frers design team to present their proposal. After a thorough investigation of all of the submissions, the NYYC OD Committee selected the Nautor/Frers team to design and build the new One Design yacht. Thus the birth of a new Swan!

*Offered to co-brokers on a commission split of 50/50.*

## Basic Information

---

**Category:** Cruising Sailboat

**Model Year:** 2007

**Year Built:** 2007

**Country:** United States

## Dimensions

---

**LOA:** 41' 11" (12.78m)

**LWL:** 33' 9" (10.29m)

**Beam:** 12' 11" (3.94m)

**Min Draft:** 7' 9" (2.36m)

## Speed, Capacities and Weight

---

**Displacement:** 21999.92912498 Pounds

**Water Capacity:** 84.53505664 Gallons

**Holding Tank:** 14.52946286 Gallons

**Fuel Capacity:** 36.98408728 Gallons

## Accommodations

---

**Total Cabins:** 2

**Total Berths:** 6

**Total Heads:** 1

---

## Hull and Deck Information

---

**Hull Material:** GRP

**Deck Material:** GRP

**Hull Finish:** Polyethylene

**Hull Designer:** German Frers

---

## Engine Information

---

**Engines:** 1

**Manufacturer:** Volvo

**Model:** D2-40

**Engine Type:** Inboard

**Fuel Type:** Diesel

---

## DETAILED INFORMATION

---

### Broker's Comments

---

BARLEYCORN is a rare bird, in that she is the original owner, which means consistent maintenance, and the same captain since 2008 who is meticulous. She has been stored in a heated shed winters, which allows all sorts of projects to be completed and maintain her appearance! Her black carbon spar (alum. Boom) has just been cleared coated, all fittings removed, and inspected.

*As owner is participating in the Trans-Atlantic race with friends – yacht not scheduled for relaunch until early August 2015. The yacht is committed to charter for the NYYC Invitational Cup, plus 4 days prior in September (using oldest sails only for IC practice). Charter fee would revert to new buyer.*

### Owner's Comments

---

*Note: Trailer excluded from sale.*

### Construction

---

*Hull, Deck & Superstructure Construction:*

- Hull is infusion molded Eglass/vinylester laminate with carbon reinforcements in selected areas.
- Sandwich with closed cell foam cored hull, with higher density foam in bottom and slamming areas.
- Fibre reinforcements are multiaxial and unidirectional.
- Structural bulkheads are of veneered sandwich construction or marine grade waterproof plywood.
- Watertight bulkhead at bow, drained forepeak.
- Bottom stiffeners reinforced with unidirectional carbon and multiaxial glassfibre in selected areas GRP engine beds.
- Stainless chainplate deck fittings.
- Topsides are gelcoat.

- Epoxy coated bottom, sprayed.
- Deck is infusion molder E glass vinylester laminate sandwich deck with glass skins and closed cell foam cores.
- High density core or compact laminate under winches and deck hardware as appropriate.
- Delivered Aug. '07 RI to Newport to current owner.
- Vessel chartered only for NYYC I.C. events with paid Cap't on board (no other charters).
- Vessel professionally maintained & serviced by paid Cap't and Robert Connell of Pilot's Pt Marina (Westbrook, CT). Stored indoors winters.
- 2014 bottom refinished (now black baltoplate).

#### *Keel & Rudder:*

- T keel, steel fin with antimony alloyed lead bulb and with upper flange recessed in to hull.
- The fin is bolted to the hull with high tensile steel bolts.
- Epoxy coated.
- Single point lift.
- Rudder blade of GRP from female mold.
- Carbon/epoxy stock.

## **Machinery**

---

#### *Engine & Gearboxes:*

- Volvo Penta D2-40 130S marine diesel, 29 kW, 40 HP.
- 25mm sounding proofed engine box.
- Saildrive gearbox 2.19:1.

#### *Maintenance & Performance:*

- 2012 Volvo saildrive gearbox clutches replaced and lower S-drive serviced.
- Engine hours: 1366.

### *Propulsion & Steering:*

- Carbon wheels.
- 2013 new Volvo 17X14 LH folding prop fitted.
- Alum. Quadrant, wire steering with chain and sprocket Rudder bearings are self-aligning.
- Roller bearing sheaves.
- Twin composite pedestal integrated with cockpit sole.
- Emergency tiller.

## **Electrical Systems**

---

### *Voltage Systems:*

- 110V outlet at chart table.
- GFI duplex receptacle.
- 12V DC insulated return system for lighting and general service.
- Main distribution panel contains 12V DC gauges and 110V AC gauges and circuit breakers, lighted.
- Main switchboard 12V DC outboard of chart table.
- 12V outlet at chart table Bottom of mast, shrouds and stays are grounded to the keel.

### *Battery Banks:*

- 12V 50 aH starting battery.
- Service battery AGM type 12V, 2 x 160 Ah in saloon table base.

### *Battery Chargers:*

- Inverter/battery charger, Mastervolt, replaced 2012.



*Alternators:*

- 115 Amp alternator with an electronic sensor Engine space air Inlet from deck Engine control panel recessed in cockpit.

*Shore Power:*

- Shore power 110V AC.
- 30 amp shore power cord & inlet.

## Plumbing Systems

---

*Bilge Pumps:*

- 2 x Manual bilge pumps.
- 1 x Electric bilge pump.

## Tankage

---

*Fuel:*

- 140L fuel in two polyethene tanks, approx. 40 gallons
- Tank level indicator.

*Fresh water:*

- 320L fresh water in two polyethene tanks.
- Pressure hot/cold water.
- Back up foot pump for fresh water in galley.

*Grey/Blackwater holding tanks:*

- Flexible holding tank, 55L/14.5 US gallons Tank emptied by hand pump or deck suction.

---

## Navigation Equipment

---

- 2014 Garmin GMR 18 High Def Radar installed.
- 2014 Composite Solutions carbon post w/articulating top platform.
- 2014 Hi-performance fluxgate heading sensor for radar.
- 2014 replacement ICOM M504 VHF at helm and remote.
- 2014 replacement B&G H3000 Hercules Performance CPU.
- 2008 ACR 406 MHZ- EPIRB.
- 2008 Motorola Iridium SatPhone.
- 2007 B&GHE3-SYST-2 Hercules Grand Prix Race Pack.
- 2007 5 B&G H3000 20/20 jumbo mast display pack w/hall custom carbon mast pod.
- 2007 Carbon masthead wand.
- 2007 Halcyon 2000 fluxgate compass.
- 2007 Garmin 3210 10" GPS plotter.
- 2007 B&G autopilot H300 Type 2.
- 2007 Smart Radio AIS receiver (receiver only, does not transmit)
- 2007 Argonaut Ranger laptop with Expedition software.
- 2007 Panasonic wireless LCD display bundle.

---

## Domestic Equipment

---

### *Galley:*

- Sea water spout with foot pump in galley.
- 2011 refrig. unit replaced.
- Battery driven refrigeration unit, top loading 105L, gravity drained with valve.
- Sst double sinks.
- Two burner alcohol stove with oven.
- Formica counter tops and sink cover/drawers/lockers.

- Garbage bin.

#### *Heads/Showers:*

- Shower with hot water in stern.
- Jabsco manual toilet, using sea water for flushing Y valve in fwd head/overboard discharge/holding tank.

#### *Heating & Ventilation:*

- 4 hella turbo fans.

#### *Entertainment:*

- 2007 stereo system with cockpit speakers.

---

## **Accommodation**

---

#### *Summary of Accommodation:*

- All standard equipment including V-berth (now removed and in storage).
- Canvas floor protector at galley.
- 2011 new main & aft cabins hard leeboards fabricated.
- Finish is teak with satin white GBP/canvas lining.
- Lockable plywood floorboards covered with bamboo veneer.
- Overhead liner GRP molding, bonded in place.
- Removable vinyl cover panels provide access to deck hardware.
- Double aft cabins with stowage under
- Main salon folding leaf table
- Settee backrests fold up and convert into Pullman berths, storage behind backrests.
- Tanks below settees.

- Forepeak completely open for sail storage.
- Zippered storage units under salon bunks.

*Internal Layout (no fwd berth installed at this time):*

## Deck Equipment

---

*Rig:*

- Hydraulic mast jack.
- Harken tuff-luff headstay fitted.
- 2 thru-hull scope access fittings and scope.
- Constantly updated running rigging with spares.
- Clear coated 2015 carbon double spreader fractional spar, alum. boom
- Mechanical vang.
- Carbon retractable bowsprit.
- Navtec rod rigging with discontinuous shrouds, series 500 deck turnbuckles.
- Recessed furler with dual groove carbon racing foils, in storage
- Holmatro Hydraulic backstay with two carbon control panels in cockpit

*Winches:*

- Harken 3 speed top cleat primary racing winches.
- Mainsheet winches Harken B 53.2STA.
- Cabin top winches Harken B44.2STA.

*Sails:*

- 2014 3Di mainsail.
- 2014 Prior year overstock 3DI #4 (4+).

- 2014 Code 2A spin.
- 2014 L-2 light headsail.
- 2013 3DL 50/50 (carbon/aramid) offshore mainsail.
- 2013 3DL M-2 carbon/aramid med. Jib 106%.
- 2010 lightly used Code Zero spin with furler.
- 2012 3DL carbon/aramid heavy jib.
- 2012 Code 1A spin.
- 2011 3DL Light/medium jib.
- 2011 Code 4A spin.
- 2011 Code 2A spin.
- 2010 3DL mainsail (damaged & repaired-serviceable practice or delivery sail).
- 2010 3Di Med./Heavy jib.
- 2007 3DL 85% ORC heavy jib.
- 2007 Norlam spin stsl.
- 2007 Delivery mainsail Dacron w/full length battens & sliders in place of boltrope.
- 2007 carbon/aramid jibtop.
- 2007 3DL aramid Genoa stsl.
- 2007 RF Dacron delivery jib 106%.
- 2007 Storm trysail.
- 2007 Code 3A spin.

*General:*

- Removable stern ladder. (in storage)
- Cradle with hurricane legs and custom cradle saddles.
- Misc. spares specific to BARLEYCORN.

---

### *Anchoring & Mooring Equipment:*

- Removable anchor roller.

### *Covers, Canvas & Cushions:*

- Teak cockpit seats.
- Cruising sprayhood (never fitted), and deck track has been removed
- Racing sprayhood.
- Sunbrella racing covers for settees, backrests, nav seat & table.
- Sunbrella storage cover for carbon headstay (headstay not fitted).

### *Safety Equipment:*

- Winslow 10 man liferaft in companionway garage & also MOM pod. Inspected 5/13.

---

## **Exclusions**

Owner's personal belongings.

---

## **Disclaimer**

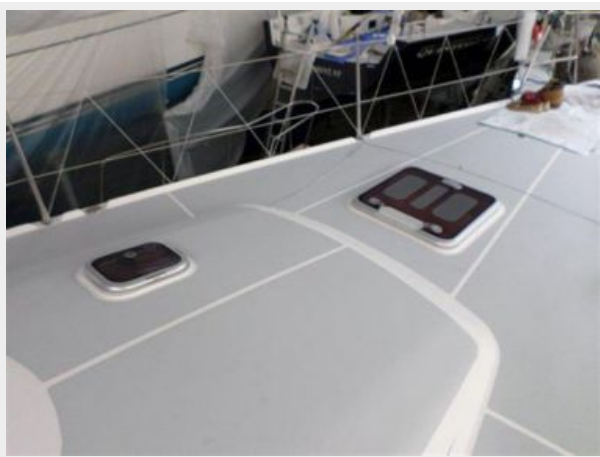
The Company offers the details of this vessel or yacht in good faith but cannot guarantee or warrant the accuracy of this information nor warrant the condition of the vessel. A buyer should instruct his representatives, agents, or his surveyors, to investigate such details as the buyer desires validated. This vessel or yacht is offered subject to prior sale, price change, or withdrawal without notice.

# PHOTOS

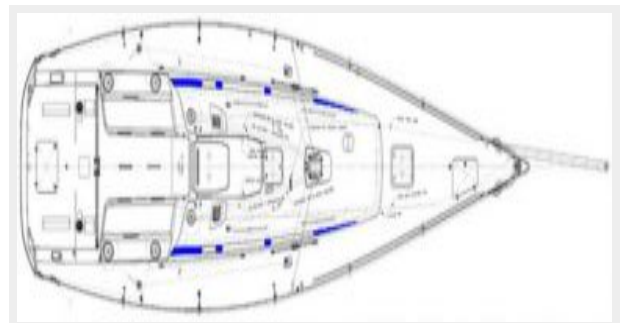
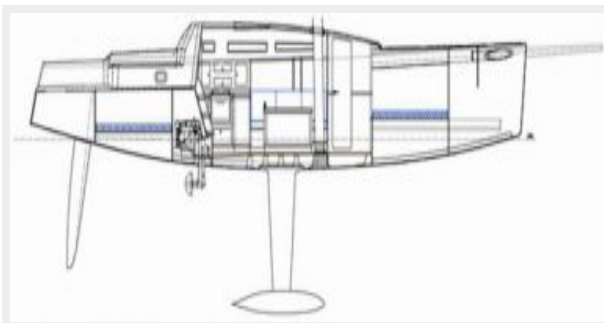
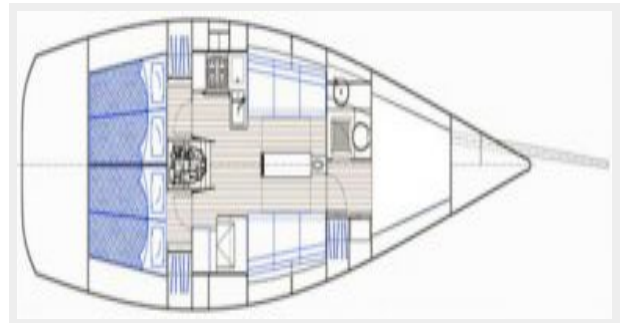
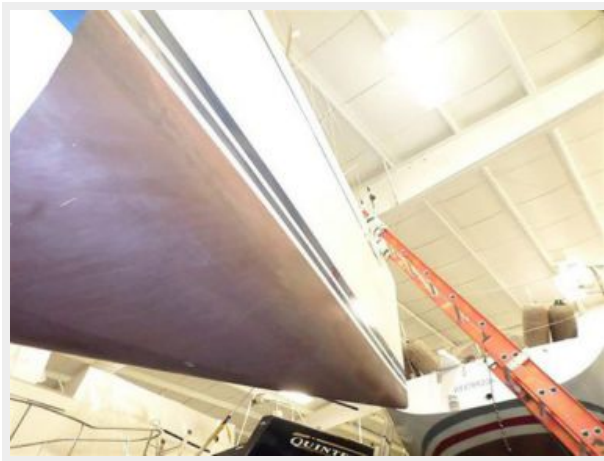
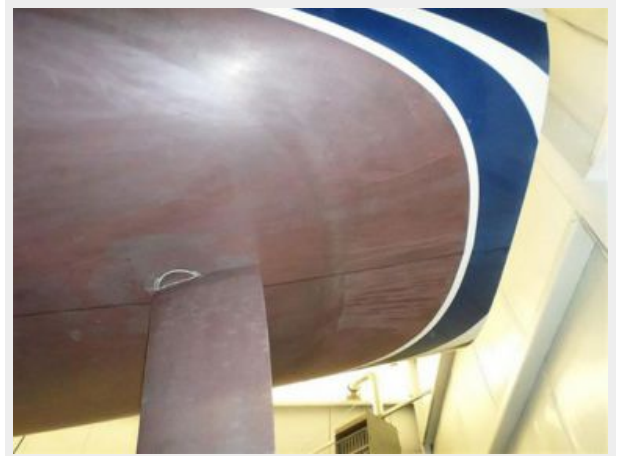














# CONTACTS

---

Andrey Shestakov, leading yacht broker of the sales department of Shestakov Yacht Sales Inc. Shestakov Yacht Sales Inc., the official representative of the Miami/Fort Lauderdale FL headquarters.

## Contact details

---

Email: [andrey@shestakovyachtsales.com](mailto:andrey@shestakovyachtsales.com)

Web: [shestakovyachtsales.com/en/](http://shestakovyachtsales.com/en/)

## Telephones

---

USA: +1(954)274-4435

## Office hours

---

Monday – Saturday: **9:00 - 21:00** EDT

Sunday: **closed**

## Address

---



Harbour Towne Marina, 850 NE 3rd St,  
STE 213, Dania, FL 33004