

SNAFU TOO — PACIFIC TRAWLERS



Судостроитель: PACIFIC TRAWLERS

Год постройки: 1976

Модель: Траулер

Цена: **ЦЕНА ЯХТЫ ПО ЗАПРОСУ**

Местонахождение: United States

Длина общая: 37' 0" (11.28m)

Ширина: 13' 3" (4.04m)

Макс. осадка: 3' 10" (1.17m)

Крейс. скорость: 7 Kts. (8 MPH)

Макс. скорость: 9 Kts. (10 MPH)

Купить **SNAFU TOO — PACIFIC TRAWLERS** а также выбрать подходящую вам яхту из нашего каталога яхт вам поможет опытный яхтенный брокер Андрей Шестаков. На сегодняшний день компания **Shestakov Yacht Sales Inc.** имеет большое количество яхт в собственном списке продаж, а также тесно сотрудничает со всеми крупными яхтенными производителями по всему миру.

Для того чтобы купить яхту **SNAFU TOO — PACIFIC TRAWLERS** а также проконсультироваться по любому вопросу связанному с покупкой, продажей, чартером яхт позвоните по телефону **+7(918)465-66-44**.

ОГЛАВЛЕНИЕ

ОГЛАВЛЕНИЕ	2
ХАРАКТЕРИСТИКИ	4
Обзор	4
Основная информация	4
Размеры	4
Скорость, вместимость и масса	4
Размещение	5
Корпус и палуба	5
Информация о двигателе	5
ПОДРОБНОЕ ОПИСАНИЕ	6
Accommodations	6
Galley	6
Deck & Hull	6
Electrical	6
Pilothouse	7
Engine & Mechanical	7
Recent Upgrades	8
History	8
Remarks	9
Exclusions	9
Исключения	9
Отказ от ответственности	9
ФОТОГРАФИИ	10
Lower Helm	10
Starboard	10
Lower Helm	10
Lower Helm Seating	10
Salon	10

Salon	10
Galley	11
Galley	11
Steps to Lower Helm	11
V-Berth w/Filler	11
Head w/Sink & Shower	12
Stand Up Shower	12
Vacuflush Head	12
Engine Room	12
Engine Room	13
Engine Room	13
Anchor Windlass	13
Forward Pilothouse Windows	13
Pilothouse Door & Boat Deck Access	14
Bow	14
Hauled	14
Hauled	14
Bow	15
Stern	15
Bow	15
КОНТАКТЫ	16
Контактная информация	16
Телефоны	16
Время работы	16
Адрес	16

ХАРАКТЕРИСТИКИ

Обзор

The perfect North West Couple's Cruiser! This popular yacht is renowned for her semi-displacement lines including a nice wide transom and a large saloon. Built in California, this yacht has a huge feel as you step aboard. Her interior wood work is updated and she features both an Espar diesel system and a Dickinson Newport bulkhead heater. With 400 gallons each of water and fuel, you are ready for weeks underway! Economical Ford Lehman propulsion with modern amenities like the Vacuflush head, propane stove with oven and Furuno GPS make SNAFU TOO a great fit for your summer fun! This vessel offers a good set of compromises for coastal cruising. It features the interior room of a longer vessel. Affordable!

Основная информация

Тип судна: Траулер	Модельный год: 1976
Год постройки: 1976	Страна: United States
Верх: Open	Открытая палуба мостика: Да
Кубрик: Да	

Размеры

Длина общая: 37' 0" (11.28m)	Ширина: 13' 3" (4.04m)
Макс. осадка: 3' 10" (1.17m)	

Скорость, вместимость и масса

Крейс. скорость: 7 Kts. (8 MPH)	Крейсерская скорость поворота: 1750 Kts.
Дальность на крейсерской скорости: 1300	Макс. скорость: 9 Kts. (10 MPH)
	Водоизмещение: 28000 Pounds
Вместимость воды: 400 Gallons	Объем топливного бака: 400 Gallons

Размещение

Всего кают: 1

Всего ком. состава: 1

Корпус и палуба

Материал корпуса: Fiberglass

Комплектация корпуса: Semi-Displacement

Информация о двигателе

Двигатели: 1

Производитель: Ford Lehman

Модель: 6.22 Litre, 6 cylinder

Тип топлива: Diesel

ПОДРОБНОЕ ОПИСАНИЕ

Accommodations

The salon is very bright with large windows and is nicely finished in teak. There is a hide-a-bed under the settee, Dickenson diesel fireplace/heater and LED lighting. There is an enclosed head and shower compartment opposite the galley. Kenwood stereo.

V-berth with filler in center, 2 hanging lockers and 6 drawers, small sink and mirror. The head has a full size walk-in shower with on-demand hot water heater and new Vacuflush head.

Galley

- Magic Chef propane stove & oven
- Double stainless steel sink
- Nova Kool RFU9000 12V fridge (new 2014)
- Galley is separated from the salon by a "peninsula"

Deck & Hull

- Ground tackle
- 20 kg Bruce anchor (2008)
- 250' of 3/8" G4 chain and 150' of nylon rode (2013)
- Lofrans Kobra windlass (2011)
- All fiberglass decks
- Brightwork redone with Cetol
- Teak boarding platform with transom gate
- Fully covered cockpit
- Lazarette hatch
- All necessary safety gear and annual RCM SAR safety inspection

Flybridge and boat deck: New Bimini with custom mounting brackets, new venturi, bench seating along both sides with storage underneath. Instrumentation has been replaced and console has been refinished. VHF command mic.

False stack contains 2X30 lb. propane

Boat deck has full railing and textured non-slip fiberglass surface. Folding mast with boom for launching dinghy.

Electrical

- Batteries (6 golf carts and 2 4D start batteries) (2013)
- 80 amp alternator with three stage regulator
- Xantrex 2000 watt inverter/charger with remote monitoring with automatic charge regulator between battery banks
- Shore power connection and plug (2011)
- All hull fittings are bonded and equipped with electrolysis monitoring system and galvanic isolator

Pilothouse

The pilothouse has new doors with diamond seaglaze windows and new diamond seaglaze windows on the rear. Instrumentation is as follows:

- Icom 504 VHF
- ComNav 1101 autopilot
- Furuno GPS
- Furuno depth sounder
- Furuno radar with ARPA
- Laptop running Chartview pro software
- New stereo with satellite radio and new speakers
- New breakers in panel
- Windlass control in pilothouse, on flybridge and foot switches at windlass
- The pilothouse seat can be used as a watchberth
- Access to the engine room is through floor hatches
- All necessary safety gear and annual RCM SAR safety inspection

Engine & Mechanical

- Engine room and drive train
- Single Lehman 120 hp diesel – 1.5 gph at 7.5 knots – 1750 rpm - 7400 hours
- Cruise at 8 knots or below provides 2.5 miles per gallon. Range at 7.5 knots is around 1000 miles.
- Recent upgrades – exhaust elbow, Johnson raw water pump, fresh water pump, starter rebuilt, alternator rebuilt, oil and transmission coolers, heat exchanger, all hoses, rear engine mounts. Spares include a set of high pressure fuel lines and head gasket
- Borg Warner velvet drive transmission with new vibration damper plate between engine and transmission. 1 ¾ stainless shaft and dripless shaft seal
- Espar D7L diesel furnace
- Dickinson Newport bulkhead heater
- Tankage: 400 gal fuel and 400 gal water. Rebuilt fiberglass tankage with new aluminum tops (opened, cleaned, inspected and fittings replaced), twin Racor fuel filters, new fuel fill

and vent hoses

Recent Upgrades

Engine

- New exhaust elbow
- Rebuilt starter and alternator
- New engine cooling jacket water pump and new upgraded raw water pump
- New vibration damper and rear engine mounts
- All new hoses (water and oil) engine and transmission
- New engine oil cooler and transmission cooler. Cleaned and serviced heat exchanger
- Double Racor fuel filters

Electrical

- New Xantrex 2000W inverter/charger with remote monitor
- New house batteries (6 golf cart) and start/windlass (2 – 4D) with automatic charge regulator (ACR) to control charging. 3 stage smart charge regulator off alternator New shore power receptacle
- New 120V panel and GFCI outlets. new 12V breakers
- New pilothouse doors and rear windows
- Instrumentation
- New iCom VHF with command mic to flybridge
- Furuno radar, depth sounder and GPS
- New Kenwood stereo with satellite radio

Deck

- New hatch/emergency escape from stateroom and new ports
- New Lofrans Kobra windlass with controls on deck, in pilothouse and on flybridge
- New 20 kg Bruce anchor, swivel and 250 ft 3/8 chain and 150 ft rode

Galley, Head and Salon

- LED lighting throughout
- New Nova Kool RU9000 high efficiency fridge
- New Vacuflush head and tap set
- Flybridge and exterior
- New bimini
- All exterior brightwork recently refinished in Cetol
- Recently hauled and bottom painted and new zincs

History

A quick history of the Pacific Trawler 37: About 20 boats were produced in the mid-1970's in California, then about 35 boats were produced in Washington state from 1997 to 2003. A semi-production boat, new owners had a range of options in interior layout and equipment. About half of the boats have a flybridge, all are single engine diesel. Close quarters boat handling is excellent with this package.

Remarks

The perfect North West Couple's Cruiser! This popular yacht is renowned for her semi-displacement lines including a nice wide transom and a large saloon. Built in California, this yacht has a huge feel as you step aboard. Her interior wood work is updated and she features both an Espar diesel system and a Dickinson Newport bulkhead heater. With 400 gallons each of water and fuel, you are ready for weeks underway! Economical Ford Lehman propulsion with modern amenities like the Vacuflush head, propane stove with oven and Furuno GPS make SNAFU TOO a great fit for your summer fun! This vessel offers a good set of compromises for coastal cruising. It features the interior room of a longer vessel. Affordable!

Exclusions

All personal gear; loose items; galley gear; CD's; charts; fishing equipment; tools; spare parts; supplies & items not specifically listed on equipment list specifications sheet.

Исключения

При продаже яхты исключаются личные вещи владельца.

Отказ от ответственности

Компания предоставляет описание судна или яхты добросовестно, но не может гарантировать точность этой информации, а также не ручается за техническое состояние. Покупатель должен проинструктировать своих агентов или оценщиков исследовать представленную информацию более подробно, по собственному желанию. Продажа судна или яхты, изменение цены или снятие с продажи будет происходить без предварительного уведомления.

ФОТОГРАФИИ

Starboard



Lower Helm



Lower Helm



Lower Helm Seating



Salon



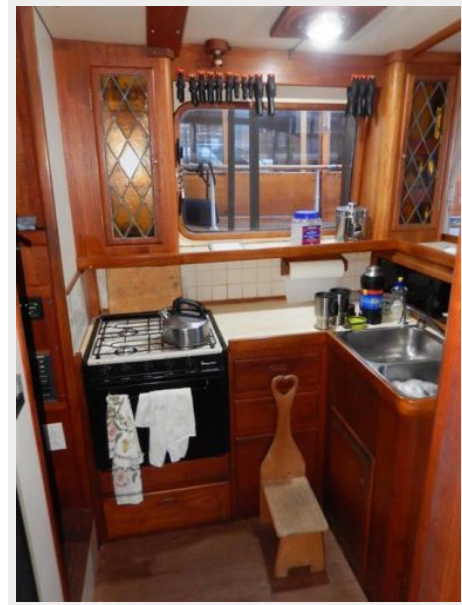
Salon



Galley



Galley



Steps to Lower Helm



V-Berth w/Filler



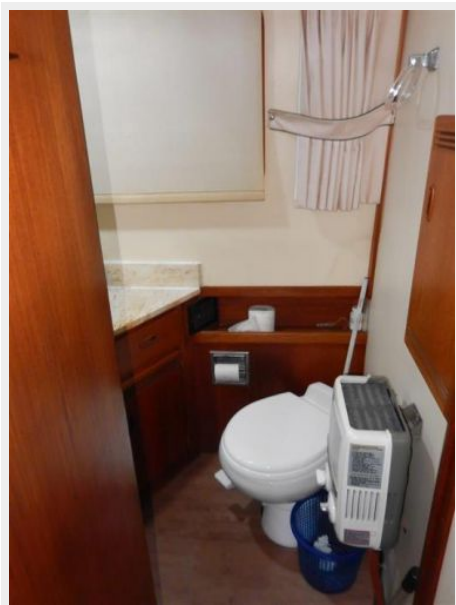
Head w/Sink & Shower



Stand Up Shower



Vacuflush Head



Engine Room



Engine Room



Engine Room



Anchor Windlass



Forward Pilothouse Windows



Pilothouse Door & Boat Deck Access



Bow



Hauled



Hauled



Stern



Bow



Bow



КОНТАКТЫ

Андрей Шестаков (Andrey Shestakov) – ведущий яхтенный брокер отдела продаж яхт и судов компании Shestakov Yacht Sales Inc. Официальный представитель Shestakov Yacht Sales Inc. для русскоговорящих клиентов в центральном офисе компании в Майами/Форт Лодердейл/Флорида/США.

Контактная информация

Email: andrey@shestakovyachtsales.com

Web: shestakovyachtsales.com

Телефоны

Краснодарский край: **+7(918)465-66-44**

США, Майами, Флорида: **+1(954)274-4435**

Время работы

Понедельник – Суббота: **9:00 - 21:00**
EDT

Воскресенье: **Закрето**

Адрес



Harbour Towne Marina, 850 NE 3rd St,
STE 213, Dania, FL 33004