

## LOOP DREAMS — SILVERTON



**Builder:** SILVERTON

**Year Built:** 2001

**Model:** Cruiser

**Price:** PRICE ON APPLICATION

**Location:** United States

**LOA:** 41' 0" (12.50m)

**Beam:** 14' 11" (4.55m)

**Min Draft:** 3' 10" (1.17m)

Our experienced yacht broker, Andrey Shestakov, will help you choose and buy a yacht that best suits your needs **LOOP DREAMS — SILVERTON** from our catalogue. Presently, at Shestakov Yacht Sales Inc., we have a wide variety of yachts available on our sale's list. We also work in close contact with all the big yacht manufacturers from all over the world.

If you would like to buy a yacht **LOOP DREAMS — SILVERTON** or would like help answering any questions concerning purchasing, selling or chartering a yacht, please call **+1(954)274-4435**

# TABLE OF CONTENTS

---

TABLE OF CONTENTS	2
SPECIFICATIONS	4
Overview	4
Basic Information	4
Dimensions	4
Speed, Capacities and Weight	4
Accommodations	5
Hull and Deck Information	5
Engine Information	5
DETAILED INFORMATION	6
Introduction	6
Accommodations and Walk Through	6
Navigation & Electronics Equipment	7
Electrical Equipment	7
Galley	7
Deck and Hull Equipment	7
Features & Accessories	7
Maintenance	8
Mechanical	8
Disclaimer	8
Exclusions	8
Disclaimer	8
PHOTOS	10
Flybridge Helm	10
Flybridge Entertaining/Wet Bar	10
Sliding Stainless Entry to Salon	10
Aft Cockpit	10
Salon Settee to Stbd	11

---

Salon Recliner to Port	11
Entertainment Center	11
Work Space/Desk to Port	11
Galley and Dining Area	11
Dinette	11
Master Stateroom	12
Master Head	12
Separate Shower	12
Guest Stateroom	12
Twin CAT Diesels 3126B	13
Floor Plan	13
View Aft from Bow	13
Kohler 8 kW Gen Set	13
Pretty Rainbow and Boat!	13
CONTACTS	14
Contact details	14
Telephones	14
Office hours	14
Address	14

---

---

# SPECIFICATIONS

---

## Overview

---

One of the largest 41' models available. This recent listing incorporates the Silverton "Sidewalk" design which allows a two stateroom layout with a large raised Galley and Dinette area that offers an excellent view while cooking and eating. The Salon is also extremely large and features nice cherry wood appointments with rounded stairway to the two staterooms. The master forward has separate head on one side and shower on the opposite side to maximize space. The flybridge is also very large and accommodating with seating for eight or more and incorporates descending walkways forward for safe access to the foredeck. A complete enclosure surrounds the flybridge and sunlounge. A full electronics package makes this a great cruiser and excellent live-aboard on the water.

This boat has had all freshwater usage, except for 5 months. It has always been stored under cover.

## Basic Information

---

**Category:** Cruiser

**Sub Category:** Double Cabin

**Model Year:** 2001

**Year Built:** 2001

**Country:** United States

**Vessel Top:** Bimini Top

**Fly Bridge:** Yes

**Cockpit:** Yes

## Dimensions

---

**LOA:** 41' 0" (12.50m)

**Beam:** 14' 11" (4.55m)

**Min Draft:** 3' 10" (1.17m)

## Speed, Capacities and Weight

---

**Displacement:** 29000 Pounds

**Water Capacity:** 210 Gallons

**Holding Tank:** 40 Gallons

**Fuel Capacity:** 450 Gallons

---

## Accommodations

---

**Total Cabins:** 2

**Total Berths:** 2

**Total Heads:** 1

---

## Hull and Deck Information

---

**Hull Material:** Fiberglass

---

## Engine Information

---

**Engines:** 2

**Manufacturer:** Caterpillar

**Model:** 3126B

**Engine Type:** Inboard

**Fuel Type:** Diesel

---

# DETAILED INFORMATION

---

## Introduction

---

The Silverton 410 Sport Bridge is sporty on the outside and gracious on the inside. Two sunpads, plenty of comfortable seating, and a wetbar make being topside truly fun. An ergonomic helm, full instrumentation, and a power-packed engine room make for an exciting adventure. When the day is done, move below to one of the largest interiors in its class. The 410 has a full-beam salon, two full staterooms, a split head and shower, plus a raised galley no chef could ignore. Texas Freshwater boat, (except 5 months salt on Loop) stored under cover except on Loop. She is ready to continue her cruise with new owners.

## Accommodations and Walk Through

---

Interior features beautiful cherry wood cabinetry, a large Salon w/ reclining chair, L-shaped sleeper sofa, mini-office to port, entertainment center w/ full Kenwood electronics with surround sound, unique raised Galley and Dinette gives an excellent view and ambiance through the windshield and side windows, while preparing meals or dining. She comes with a full size refrigerator/freezer, convection microwave oven, electric cooktop, Corian counter tops, deep sink and ample storage. A cherry wood paneled curved hallway down to cabin gives access to a large Master Stateroom forward w/ queen island berth, inner spring mattress, cedar lined hanging lockers. A Guest Stateroom is aft to port w/ a full sized berth w/ inner spring mattress, stereo/CD player, and storage. There is large Head w/ VacuFlush toilet, vanity w/ Corian counter top, medicine cabinet and storage to starboard, and a separate shower room is to port between the Staterooms.

Exterior includes a large Flybridge with double wide helm seat, passenger bench seat to port and another bench aft. There is a wet bar, icemaker, full Eisenglass enclosure and easy access to the bow with a wide molded ramp on both sides of the flybridge. There is safe passageway with molded fiberglass stairs leading down to the cockpit with an extended overhang, under deck storage box, transom storage, transom door, optional stainless steel framed sliding door to Salon. There is an extended swim platform w/ ladder, transom locker w/ hot & cold shower, shore water connection and TV/phone hook up.

- Island queen forward master
- Queen in guest stateroom
- Custom linens
- Abundant stateroom storage. Lots of drawers and 3 hanging lockers.
- Split shower / head layout. Shower access from both staterooms.
- Convertible sofa in salon
- Vacuflush head, totally rebuilt including new toilet 2011

---

## Navigation & Electronics Equipment

---

- Raymarine Tri Data depth, speed, water temp
- Garmin 4210 color chartplotter installed 2011
- Garmin GMR 24 Radar 2011
- Raymarine 210 VHF radio
- Kenwood KMR 4404 Radio with CD 2011
- Kenwood KAC5204 Stereo amplifier 2011

---

## Electrical Equipment

---

- Kohler 8Kw Generator currently has 1550 hours
- 50 Amp shorepower

---

## Galley

---

- Norcold upright refrigerator / freezer new 2011
- Princess 2 burner electric stove
- Sharp convection microwave
- DiLonghi toaster oven
- Coffeemaker
- 11 Gal water heater
- Icemaker
- 2 16,000 BTU reverse cycle AC and Heat with digital controls
- Salon Home theater with surround and 5 disc changer
- Galley flat screen television
- Omnidirectional HDTV antenna

---

## Deck and Hull Equipment

---

- Simpson Lawrence Sprint 1000 windlass with Delta plow anchor. 200' of chain. Windlass rebuilt 2013.
- Second fluke style anchor with 15 feet chain and 200' line
- Four large fenders
- Oil exchange system
- New fresh water pump 2013
- New battery charger 2013
- Seven new batteries 2011

---

## Features & Accessories

---

- Stainless sliding glass door frame. This was a \$4,000 factory option. Prevents paint chipping common to standard painted door.
- Bug screens added to Eisenglass.
- Full bridge and cockpit enclosures
- Garelick folding cockpit table and chairs
- Hurley dinghy davit system

---

## Maintenance

---

- Bottom paint May 2013
- Polished and waxed September 2013
- Oil and fuel filters changed 2013
- HVAC systems serviced and tuned 2012
- Props straightened and tuned 2013
- Fresh water usage except for 5 months
- Always been stored under cover

---

## Mechanical

---

- Cat 3126Bs with American made blocks
- ZF transmissions, dripless seals, 2 1/2" tapered shafts
- 4 bladed nibril props
- Heaters in the bilge and lazarette (for winter storage)

---

## Disclaimer

---

Please note: Engine hours shown here are as of the original listing date and are an account of what the Listing Broker was told by the Owner and/or actual reading of the engine hour meters. The Broker cannot guarantee the accuracy of engine and/or genset hours. It is the responsibility of the Buyer and/or his Agent/Surveyor to verify engine/genset hours, as well as all other representations noted on the Listing Brochure.

---

## Exclusions

---

Owner's personal belongings.

---

## Disclaimer

---

The Company offers the details of this vessel or yacht in good faith but cannot guarantee or warrant the accuracy of this information nor warrant the condition of the vessel. A buyer should



instruct his representatives, agents, or his surveyors, to investigate such details as the buyer desires validated. This vessel or yacht is offered subject to prior sale, price change, or withdrawal without notice.

# PHOTOS

**Flybridge Helm**



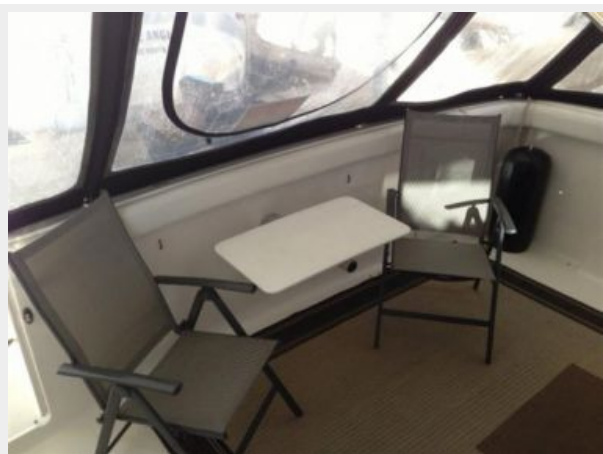
**Flybridge Entertaining/Wet Bar**



**Sliding Stainless Entry to Salon**



**Aft Cockpit**



**Salon Settee to Stbd**



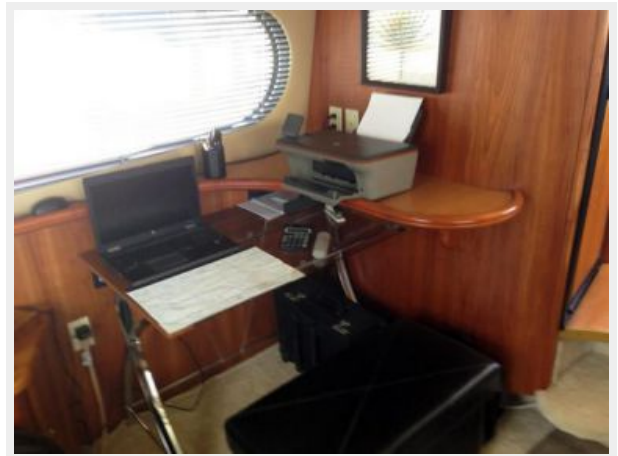
**Salon Recliner to Port**



**Entertainment Center**



**Work Space/Desk to Port**



**Galley and Dining Area**



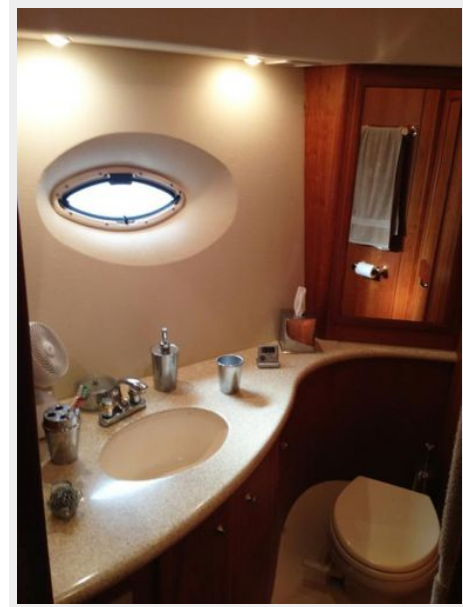
**Dinette**



**Master Stateroom**



**Master Head**



**Separate Shower**

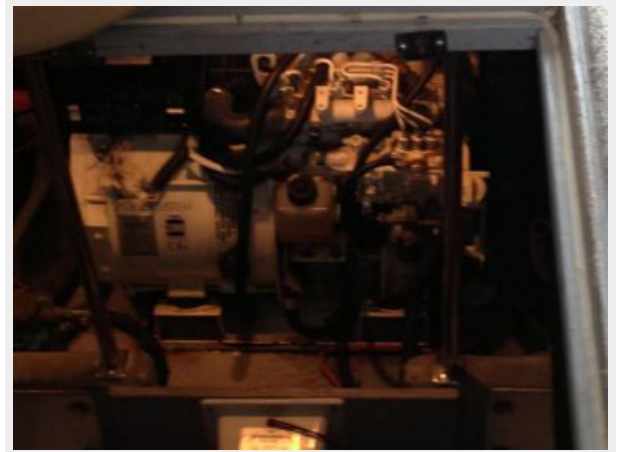
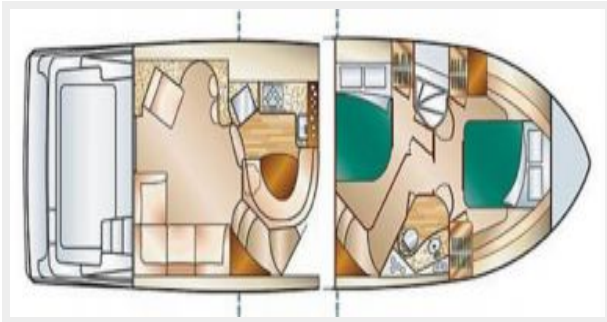


**Guest Stateroom**



### Twin CAT Diesels 3126B

#### Floor Plan



#### View Aft from Bow

#### Kohler 8 kW Gen Set



#### Pretty Rainbow and Boat!



# CONTACTS

---

Andrey Shestakov, leading yacht broker of the sales department of Shestakov Yacht Sales Inc. Shestakov Yacht Sales Inc., the official representative of the Miami/Fort Lauderdale FL headquarters.

## Contact details

---

Email: [andrey@shestakovyachtsales.com](mailto:andrey@shestakovyachtsales.com)

Web: [shestakovyachtsales.com/en/](http://shestakovyachtsales.com/en/)

## Telephones

---

USA: +1(954)274-4435

## Office hours

---

Monday – Saturday: **9:00 - 21:00** EDT

Sunday: **closed**

## Address

---



Harbour Towne Marina, 850 NE 3rd St,  
STE 213, Dania, FL 33004