

## BIG DADDY — SEA RAY



**Builder:** SEA RAY

**Year Built:** 2003

**Model:** Motor Yacht

**Price:** PRICE ON APPLICATION

**Location:** United States

**LOA:** 48' 0" (14.63m)

**Beam:** 15' 3" (4.65m)

**Max Draft:** 3' 9" (1.14m)

**Cruise Speed:** 27 Kts. (31 MPH)

**Max Speed:** 31 Kts. (36 MPH)

Our experienced yacht broker, Andrey Shestakov, will help you choose and buy a yacht that best suits your needs **Big Daddy — SEA RAY** from our catalogue. Presently, at Shestakov Yacht Sales Inc., we have a wide variety of yachts available on our sale's list. We also work in close contact with all the big yacht manufacturers from all over the world.

If you would like to buy a yacht **Big Daddy — SEA RAY** or would like help answering any questions concerning purchasing, selling or chartering a yacht, please call **+1(954)274-4435**

# TABLE OF CONTENTS

---

TABLE OF CONTENTS	2
SPECIFICATIONS	5
Basic Information	5
Dimensions	5
Speed, Capacities and Weight	5
Accommodations	5
Hull and Deck Information	6
Engine Information	6
DETAILED INFORMATION	7
Highlights	7
Vessel Walkthrough	7
Hull & Deck Features	8
Transom (Swim Platform)	9
Aft Deck	9
Salon	9
Dinette	10
Galley	10
Companionway	10
Master Stateroom (Bow)	11
Master Head	11
Port Stateroom	11
Starboard Stateroom	12
Flybridge & Bridge Deck	12
Guest/Day Head (Port)	13
Bow	14
Electronics	14
Mechanical / Engine	14
Electrical Systems	15

Underwater Gear	15
Audio & Visual Equipment	15
Exclusions	16
Exclusions	16
Disclaimer	16
PHOTOS	17
Starboard Profile	17
Port Aft Profile	17
Salon Aft	17
Salon Forward	17
Salon Seating Starboard w/Entertainment Center	17
Salon (2)	17
Galley Starboard	18
Galley	18
Galley (2)	18
Galley Sub Zero Refrigerator/Freezer	18
Companionway to Staterooms	18
Dinette	18
Master Stateroom (Bow)	19
Master Stateroom (2)	19
Master Stateroom To Port	19
Master Stateroom To Port	19
Master Stateroom To Starboard	19
Master Head	19
Master Head (2)	20
Starboard Stateroom Aft Bunk & Sofa That Converts To Twin Bunk	20
Washer/Dryer	20
Starboard Stateroom Doorway	20
Guest/Day Head	21

---

Guest/Day Head (2)	21
Port Stateroom	21
Guest/Day Head w/Shower	21
Port Stateroom (2)	21
Port Stateroom TV	21
Port Stateroom (3)	22
Flybridge Helm Overview	22
Helm Chairs Aft	22
Helm Electronics	22
Helm Starboard	22
Flybridge U-Shaped Seating	22
Flybridge Refrigerator/Icemaker	23
Flybridge To Aft	23
Big Daddy	23
CONTACTS	24
Contact details	24
Telephones	24
Office hours	24
Address	24

---

# SPECIFICATIONS

---

## Basic Information

---

**Category:** Motor Yacht

**Model Year:** 2004

**Year Built:** 2003

**Country:** United States

**Vessel Top:** Hardtop

**Fly Bridge:** Yes

## Dimensions

---

**LOA:** 48' 0" (14.63m)

**Beam:** 15' 3" (4.65m)

**Max Draft:** 3' 9" (1.14m)

## Speed, Capacities and Weight

---

**Cruise Speed:** 27 Kts. (31 MPH)

**Max Speed:** 31 Kts. (36 MPH)

**Displacement:** 40400 Pounds

**Gross Tonnage:** 20 Pounds

**Water Capacity:** 140 Gallons

**Holding Tank:** 68 Gallons

**Fuel Capacity:** 500 Gallons

## Accommodations

---

**Total Cabins:** 3

**Sleeps:** 6

**Total Heads:** 2

---

## Hull and Deck Information

---

**Hull Material:** Fiberglass

**Hull Configuration:** Modified V-Hull

**Hull Color:** White

**Hull Designer:** Sea Ray

**Exterior Designer:** Sea Ray

**Interior Designer:** Sea Ray

---

## Engine Information

---

**Engines:** 2

**Manufacturer:** Cummins

**Model:** QSM 11

**Engine Type:** Inboard

**Fuel Type:** Diesel

---

# DETAILED INFORMATION

---

## Highlights

---

- Kept on Lift Out of Water
- Bottom Paint - Gel-Coat, Arctic White
- Fiberglass Hardtop w/Full Enclosure
- Twin Cummins QSM-11 Diesel Inboard 660hp
- Bow Thruster
- Overhead Electronics & Closure
- Raymarine Auto Pilot ST 7001+
- Raymarine RL 80C
- Raymarine VHF Radios (2)
- Hydraulic Swim Platform w/Chocks
- (3) Underwater Lights, Multi Colored
- AM/FM Clarion Stereo w/ (2) CD Players & DVD in Salon
- Smartcraft Systemview
- Air-Conditioning & Heating also in Flybridge
- Fire suppression System
- ACR Spotlight
- CableMaster
- Cherry Wood Finish
- "32 Phillips Flatscreen in Salon
- Separate Shower & Head for Master Stateroom
- SAT TV in Salon & Each Stateroom
- Direct TV in Salon & Each Stateroom
- Ultra-Leather Interior Seating
- Central Vacuum System
- Washer/Dryer Combo
- Sunbrella Canvas Package
- Live Baitwell System

## Vessel Walkthrough

---

**Big Daddy** is a 2004 48' Sea Ray Sedan Bridge with 3 Staterooms & 2 Heads. This Yacht is powered with Twin Cummins diesel engines, 660hp & has been kept on a lift out of the water. The 480 DB offers entertainment areas on the Aft Deck, Flybridge and Salon with Dinette seating. **Big Daddy** has a hydraulic swim platform with chocks for a Jet Ski or dinghy. There is also underwater transom lighting and space for storage. The Aft Deck has a large cushioned bench for outdoor seating and entertaining. The Engine Room hatch is also located on the aft deck for easy access. **Big Daddy** offers L-Shaped Salon seating to Port with an ultra-leather

sleeper sofa and a Custom granite cocktail table. The Salon also features an entertainment system to Starboard with two Clarion stereos, two CD players with DVD and an Upgraded “32 Phillips flat screen TV. This vessel’s interior is done in Light Cherry High Gloss cabinetry. The Galley is equipped with a Sub Zero refrigerator & freezer w/ice-maker, microwave/convection oven, three burner flat top burner stove, sink and ample storage space. There is a washer dryer unit below in the Starboard Bunk Stateroom and central vacuum system throughout. **Big Daddy** Master Stateroom is in the Bow with two hanging closets, along with shelving and drawer storage. The Master Stateroom has a private Head with private access as well. The Port Stateroom has a full bed and direct access to the Guest Head. The Starboard Stateroom has 2 bunks and shares the Guest Head to Port. **Big Daddy** Flybridge has access stairs from the Aft Deck. The Flybridge is large with a hard top, full bridge enclosure and is equipped with air conditioning and heat. There is a large U-shaped seating area forward for entertaining with a wet bar including refrigerator. The Helm is complete with Raymarine electronics such as auto pilot, E120 w/fishfinder and two VHF radio’s to mention a few. **Big Daddy** is located in Belleair Beach and ready for showing. **Follow the link below to view a slideshow of Big Daddy:**  
<http://caryjohn.zenfolio.com/2004searay48db/slideshow>

## Hull & Deck Features

- Bottom Paint - Gel-Coat, Arctic White **UPGRADE**
- Yacht Flag & Flag Pole **UPGRADE**
- ACR Spotlight **UPGRADE**
- Chocks **UPGRADE**
- Bow Rail, 316 Stainless Steel w/Welded Stanchions, Intermediate Rails & Life Lines
- Canvas Color: Blue
- Cleats, Custom Sea Ray Thru-Bolted - Stainless Steel (10)
- Deck Fill Plates, Stainless Steel
- Deck Rails, 316 Stainless Steel
- Graphics, Striping
- Handrails, 316 Stainless Steel
- Hatch, Deck Vent - Translucent w/Locks & Sky Screen Cover (20x20)
- Light, Stern
- Lights, Navigation
- Portlights, Stainless Steel (4 Fixed, 6 Opening)
- Resin, High-Performance Vinylester
- Rub Rail, PVC w/Stainless Steel Insert
- Storage, Transom Wall - Fenders & Gear
- Stringer System, Fiberglass Hatman
- Swim Platform, Extended w/Concealed Stainless Steel
- Three-Step Swim Ladder w/Integral Grab Handle
- Thru-Hull Fittings, Color-Coordinated
- Toe Rail, Molded Fiberglass - Deck
- Vent System, Engine Room - Integral



- Windows, Deck Side w/Opening Vent Windows
- Windshield, Bridge Venturi - Aluminum-Framed
- Windshield, Tempered/Tinted Curved Glass

### **Canvas (Sunbrella):**

- Aft Curtain
- Bridge Enclosure
- Canvas Storage Bag
- Windlass Cover
- Windshield Shades, Mesh

### **Windlass System:**

- Windlass, All Chain **UPGRADE**
- Anchor, Galvanized
- Anchor Chute, Stainless Steel
- Anchor Rope/Chain Storage w/Hatch
- Anchor Washdown Spigot w/Hose

## **Transom (Swim Platform)**

---

- Hydraulic Swim Platform **UPGRADE**
- (3) Underwater Lights - White/Blue/Green **UPGRADE**
- Hand Shower **UPGRADE**
- Swim Ladder

## **Aft Deck**

---

- CableMaster **UPGRADE**
- Live Baitwell System **UPGRADE**
- Cushioned Bench Seating **UPGRADE**
- Carpet Liner, Snap-In
- Portside Door from Transom to Aft Deck
- Stairs to Flybridge, Carpet In-Sets

## **Salon**

---

- Granite Cocktail Table **UPGRADE**
- "32 Phillips Flat Screen TV **UPGRADE**
- Direct TV **UPGRADE**
- SAT TV **UPGRADE**

- Central Vacuum System **UPGRADE**
- Cherry Wood Finish
- (1) Ultra-Leather L-Shaped Sofa w/Electrically Operated Slide-Out Bed to Port
- (2) Barrel Chairs to Starboard
- Mini Blinds
- Curtains
- Lights on Dimmers
- Entertainment Center \*Clarion Stereo - AM/FM Digital Cassette & (2) CD w/6-Disc CD Changer, Amplifier & Speakers (6)
- Storage Cabinets to Starboard

---

## Dinette

- Ultra-Leather U-Shaped Dinette Table w/Storage Below
- Cherry Wood Finish
- Carpet

---

## Galley

- Sub Zero Refrigerator & Freezer w/Icemaker
- Cherry Wood Finish
- Coffeemaker, 120V (Spacemaker)
- Counter-top in Sandstone
- Gel-Coat, Sink, Single-Lever Grohe Faucet & Corian Sink Cover
- Wood & Carpet Flooring
- Microwave/Convection Oven, 120V
- Storage, Bottle
- Storage, Drawers w/Cutlery Insert
- Storage, Upper & Lower w/Designated Plate, Glass & Bottle Storage
- Stove, 240V Flush-Mount Three-Burner w/Stainless Steel Safety Rail
- Trash Receptacle w/Chute & Corian Cover

---

## Companionway

- Carpet
- Storage in Floor (2)

---

## Master Stateroom (Bow)

---

- Direct TV **UPGRADE**
- SAT TV **UPGRADE**
- Bed, Full-Size w/Innerspring Mattress, Pillows, Coordinated Spread & Drawer Storage Below w/Gas-Assisted Hatch
- Carpet
- Indirect Lighting
- Door, Privacy
- Hanging Lockers (2) - Full-Length Cedar-Lined w/Lights & Beveled Mirrored Doors
- Mirrored Rope Locker Bulkhead
- Storage, Gunwale Cabinets
- TV/DVD Combo, 13" - 120V w/Remote & Coax Outlet (Port)
- Storage in Floor

---

## Master Head

---

- Private Head
- Door, Privacy - Access from Master Stateroom
- Handrails, Stainless Steel
- VacuFlush Head w/Fiberglass Settee Lid
- Power Vent, 12V
- Shower w/Seat, Adjustable Shower Wand & Circular Acrylic Door
- Storage, Cabinet - Upper
- Storage, Medicine Cabinet - Mirrored
- Vanity w/Corian Countertop, Sink, Grohe Faucet & Storage Below
- Clothes Hook

---

## Port Stateroom

---

- Direct TV **UPGRADE**
- SAT TV **UPGRADE**
- Bed, Full-Size w/Innerspring Mattress, Pillows, Coordinated Spread & Drawer Storage Below w/Gas-Assisted Hatch
- Carpet
- Door, Privacy
- Hanging Locker, Cedar-Lined w/Light & Beveled Mirrored Door
- Mirrors, Wall Accent

- Skylight, Circular
- Storage, Drawers
- TV/DVD Combo, 13" - 120V w/Remote & Coax Outlet
- Entry to Guest/Day Head
- Storage in Floor

---

## Starboard Stateroom

---

- Direct TV **UPGRADE**
- SAT TV **UPGRADE**
- Washer/Dryer in Cabinet **UPGRADE**
- Bed, Aft Bunk w/Pillows, Sheets & Coordinated Spread
- Mirrors, Wall Accent
- Seating, Sofa w/Drawer Storage Below - Converts to Twin Bunk w/Pillows & Coordinated Spread
- Skylight, Circular
- Storage, Upper & Lower Cabinets

---

## Flybridge & Bridge Deck

---

- Bridge Air Conditioning 120V/60 **UPGRADE**
- Bow Thruster **UPGRADE**
- Overhead Electronics Enclosure **UPGRADE**
- Dash Cover **UPGRADE**
- 22" Flip Down TV w/Remote **UPGRADE**
- Beverage Holders (6)
- Carpet Liner, Snap-In
- Control Station w/Windscreen (Located in Center Bridge)
- Handrails, 316 Stainless Steel
- Hardtop, Fiberglass (20x20) Hatch w/Sky Screen Cover, Stainless Steel Grab Rails & Overhead Lighting w/Electronic Dimmer
- Hatch, Bridge Access
- Lighting, 12V
- Refrigerator, 120V
- Seating, Helm (2) - Custom Euro-Style w/Flip-Up Thigh-Rise Bolsters, Armrests & Heavy-Duty Pedestals w/Slides, Swivels & Pneumatic Vertical Adjustments
- Forward Seating, U-Shaped w/Storage Below
- Ship's Bell
- Steps, Molded Bridge Access w/Storage Below

- Stereo, 12V AM/FM Single CD, Satellite-Ready w/6-Disc
- CD Changer, Amplifier, Subwoofer, Speakers (6) & Digital Cockpit/Bridge Remote Controls (Clarion)
- Table, Bridge
- Wet Bar w/Sink, Faucet, Stainless Steel Handrail

### **Control Station:**

- Alarms, Engine - Oil, Water & Transmission Oil
- Alarms, High-Water - Bilge & Cabin
- Compass
- Emergency Engine Stop
- Emergency Start System - Engines
- Horns, Air (Concealed) - Dual Trumpet
- Instrument Panels - High-Gloss Burl SmartCraft™ Diagnostics: \*Instrumentation, Custom Sea Ray SmartCraft 4-in-1 Multigauges (2) w/Low-Glare Blue Night Lighting & Chrome Bezels (Includes: Fuel Level, Oil Pressure, Voltmeter, Water Temperature) \*SmartCraft System View (Includes: Air & Water Temperature, Combined Fuel Flow/ Range, Depth, Engine Alarms/Hour meters, Engine Synchronizer, GPS Interface, System Maintenance Records)
- Steering, Power-Assisted
- Steering, Tilt Wheel
- Steering Wheel, Wood-Accent
- Switch Panel (Backlit) - High-Gloss Burl
- Switches, Illuminated Weatherproof Rockers & Dimmer Control
- Systems Monitor, Digital LCD - for Engine Diagnostics & Pump Monitoring

### **Guest/Day Head (Port)**

---

- Vanity w/Corian Countertop, Sink, Grohe Faucet & Storage Below
- Door, Privacy - Access from Hallway
- Door, Privacy - Access from Port Stateroom
- Clothes Hook
- Handrails, Stainless Steel
- VacuFlush Head w/Fiberglass Settee Lid
- Power Vent, 12V
- Shower w/Seat, Adjustable Shower Wand & Bifold Door
- Storage, Cabinet - Upper
- Storage, Medicine Cabinet - Mirrored

---

## Bow

---

- Yacht Flag & Flag Pole **UPGRADE**
- Sun Pad w/ Cushions

---

## Electronics

---

- Raymarine Auto Pilot ST 7001+ **UPGRADE**
- Raymarine E120 w/Fishfinder **UPGRADE**
- Raymarine RL 80C **UPGRADE**
- Raymarine VHF Radios (2) **UPGRADE**

---

## Mechanical / Engine

---

### Engines:

- Twin Cummins QSM-11 Inboard Diesel 660hp **UPGRADE**
- Hours: Port 1040 Starboard: 1030

### Generator:

- 240V 13.5kW ONAN Diesel **UPGRADE**
- Generator Sound Box **UPGRADE**
- Remote Start w/Muffler, Freshwater Cooling, Fuel Filter, Seacock & Seawater Strainer

### Fuel System:

- Crossover Fuel System
- Fuel Filters (3) (Racor (2) 75-1000MAX for Engines (1) 500MA for Generator)
- Fuel Lines, USCG - Type A-1
- Fuel Tanks, Aluminum w/Anti-Siphon Valves & Electric Sending Units (2)

### Water System:

- Freshwater Hose & Spigot - Engine Room
- Freshwater Washdown Spigot
- Pressure Water System w/Dual 12V Pumps
- Shower, Cockpit - Hot & Cold
- Water Heater, 240V (18-Gallon)
- Water Inlet, Dockside
- Water Tank (140-Gallon)

---

## Waste Systems:

- Macerator w/Seacock Interlock System **UPGRADE**
- Central Drain System
- Head System (VacuFlush)
- Holding Tank Level Indicators - MDP & Heads
- Holding Tank w/Dockside Pump-Out (68-Gallon)
- Sump Box w/Pump - Automatic

---

## Electrical Systems

- Batteries, 8-D w/Boxes (2) & Group 27 for Genset (1)
- Battery Charger/Converter, 120V/50 Amp/12V
- Battery Charger Overcurrent Protection
- Isolators, Galvanic (2)
- Panel, Circuit Breaker - Remote
- Panel, DC Main Breaker
- Panel, Main Distribution - AC
- Panel, Main Distribution - DC
- Shore Power, Cablemaster (Glendinning) \*50 Amp/240V/60 Cycle w/75' Cords & Wireless Remote
- Transformers, Shore Power Isolation - 50 Amp/120V/60 Cycle

---

## Underwater Gear

- Propellers, Nibral 4-Blade Cup w/Spare (Pair) **UPGRADE**
- Trim Tabs, Hydraulic
- Bonding System w/Zinc Hull Plate
- Propeller Shafts, 2 1/2" Stainless Steel (2) - Aquamet 22
- Rudders, Manganese-Bronze w/Stainless Steel Posts
- Seacocks on all Underwater Fittings
- Seawater Strainers
- Shaft Logs, Dripless w/Extra Seal Carrier Kit
- Struts, Manganese-Bronze

---

## Audio & Visual Equipment

- TV, 32" Phillips Flat Screen **UPGRADE**
- Direct TV **UPGRADE**
- KVH Trac Vision / SAT TV
- Sirius SAT System

- Zenith DVD/CD Player - Salon
- Stereo, 12V Double Din AM/FM Digital Cassette & Single CD w/6-Disc CD Changer, Amplifier & Speakers (6) (Clarion) - Salon

---

## Exclusions

---

- Owners Personal Items
- Dinghy Not Included

---

## Exclusions

---

Owner's personal belongings.

---

## Disclaimer

---

The Company offers the details of this vessel or yacht in good faith but cannot guarantee or warrant the accuracy of this information nor warrant the condition of the vessel. A buyer should instruct his representatives, agents, or his surveyors, to investigate such details as the buyer desires validated. This vessel or yacht is offered subject to prior sale, price change, or withdrawal without notice.



# PHOTOS

**Starboard Profile**



**Port Aft Profile**



**Salon Aft**



**Salon Forward**



**Salon (2)**



**Salon Seating Starboard w/Entertainment Center**



**Galley Starboard**



**Galley**



**Galley (2)**



**Galley Sub Zero Refrigerator/Freezer**



**Companionway to Staterooms**



**Dinette**



**Master Stateroom (Bow)**



**Master Stateroom (2)**



**Master Stateroom To Port**



**Master Stateroom To Port**



**Master Stateroom To Starboard**



**Master Head**



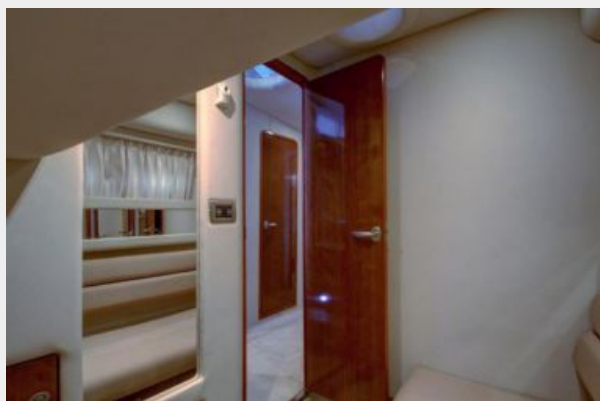
**Master Head (2)**



**Starboard Stateroom Aft Bunk & Sofa That Converts To Twin Bunk**



**Starboard Stateroom Doorway**



**Washer/Dryer**



**Guest/Day Head**



**Guest/Day Head (2)**



**Guest/Day Head w/Shower**



**Port Stateroom**



**Port Stateroom (2)**



**Port Stateroom TV**



**Port Stateroom (3)**



**Flybridge Helm Overview**



**Helm Electronics**



**Helm Chairs Aft**



**Helm Starboard**



**Flybridge U-Shaped Seating**



### Flybridge Refrigerator/Icemaker



### Flybridge To Aft



### Big Daddy



# CONTACTS

---

Andrey Shestakov, leading yacht broker of the sales department of Shestakov Yacht Sales Inc. Shestakov Yacht Sales Inc., the official representative of the Miami/Fort Lauderdale FL headquarters.

## Contact details

---

Email: [andrey@shestakovyachtsales.com](mailto:andrey@shestakovyachtsales.com)

Web: [shestakovyachtsales.com/en/](http://shestakovyachtsales.com/en/)

## Telephones

---

USA: +1(954)274-4435

## Office hours

---

Monday – Saturday: **9:00 - 21:00** EDT

Sunday: **closed**

## Address

---



Harbour Towne Marina, 850 NE 3rd St,  
STE 213, Dania, FL 33004