

BIRD'S NEST — VIKING



Builder: VIKING

Year Built: 1995

Model: Sport Fisherman

Price: PRICE ON APPLICATION

Location: United States

LOA: 58' 0" (17.68m)

Max Draft: 5' 3" (1.60m)

Cruise Speed: 28 Kts. (32 MPH)

Max Speed: 33 Kts. (38 MPH)

Our experienced yacht broker, Andrey Shestakov, will help you choose and buy a yacht that best suits your needs **Bird's Nest — VIKING** from our catalogue. Presently, at Shestakov Yacht Sales Inc., we have a wide variety of yachts available on our sale's list. We also work in close contact with all the big yacht manufacturers from all over the world.

If you would like to buy a yacht **Bird's Nest — VIKING** or would like help answering any questions concerning purchasing, selling or chartering a yacht, please call **+1(954)274-4435**

TABLE OF CONTENTS

TABLE OF CONTENTS	2
SPECIFICATIONS	4
Overview	4
Basic Information	4
Dimensions	4
Speed, Capacities and Weight	5
Accommodations	5
Hull and Deck Information	5
Engine Information	5
DETAILED INFORMATION	6
Overview	6
Salon	6
Galley	6
Master Stateroom	7
Guest Stateroom	7
VIP	7
Cockpit	8
Interior Equipment	8
Electronics	8
Flybridge - Electronics	9
Electrical Equipment	9
Engines	9
Mechanical	10
Exclusions	10
Disclaimer	10
PHOTOS	12
CONTACTS	22
Contact details	22

Telephones	22
Office hours	22
Address	22

SPECIFICATIONS

Overview

"Bird's Nest" has over \$125,000 in recent upgrades: Updated electronics, Intellian SAT/TV, new JL Audio speakers throughout, Palm Beach controls, new salon interior, custom baitwell, hull sides painted, underwater lights and the list goes on!!!

New bottom job, Propspeed, cutlass bearings, serviced all sea strainers and watermaker June, 2015.

Huge interior volume with the (3) stateroom / (3) head layout, soft goods updated 2013 and powered with dependable MAN 1200's. "Birds Nest" boasts a full tower, icemaker, watermaker, teak cockpit and cockpit controls.

There has not been a single expense spared on the maintenance or upkeep of this yacht, and she is guaranteed to be the nicest 58' Viking on the market today!!!!

Basic Information

Category: Sport Fisherman

Sub Category: Convertible

Model Year: 1995

Year Built: 1995

Country: United States

Vessel Top: Full / Tuna Tower

Fly Bridge: Yes

Dimensions

LOA: 58' 0" (17.68m)

Max Draft: 5' 3" (1.60m)

Speed, Capacities and Weight

Cruise Speed: 28 Kts. (32 MPH)

Max Speed: 33 Kts. (38 MPH)

Displacement: 81500 Pounds

Water Capacity: 260 Gallons

Fuel Capacity: 1500 Gallons

Accommodations

Total Cabins: 3

Total Heads: 3

Hull and Deck Information

Hull Material: Fiberglass

Engine Information

Engines: 2

Manufacturer: MAN

Engine Type: Inboard

Fuel Type: Diesel

DETAILED INFORMATION

Overview

"Birds Nest" boasts a full tower, icemaker, watermaker, teak cockpit and cockpit controls. With over \$125,000 in recent upgrades, she is sure to impress! These upgrades include: Updated electronics, Intellian SAT/TV, new JL Audio speakers throughout, Palm Beach controls, new salon interior, custom baitwell, hull sides painted in 2012, non-skid and covering boards redone 2012, underwater lights installed in 2013 and the list goes on and on!!!! Huge interior volume with the popular (3) stateroom/(3) head layout, soft goods updated in 2013 and powered with dependable MAN 1200's.

There has not been any expense spared with the maintenance and upkeep of this yacht, and she **will not disappoint!!! "Birds Nest"** is guaranteed to be the nicest 58' Viking on the market, so call today to set up a viewing!

Salon

Entering through the sliding door from the teak cockpit brings you into the spacious salon. High gloss teak interior with large salon windows both sides and aft provide plenty of natural light. All counter tops are white Corian. Immediately to starboard is the wet bar and Viking electrical panels hidden by high gloss teak cabinets and countertop. Further forward to starboard is the dinette finished in high gloss teak with u-shaped white ultra leather seating arrangement for 4. Above the dinette is a TV fastened to a custom hinge which allows ample storage behind. To port in the salon is the white ultra leather L-shaped sofa with ample storage for plenty of rods and tackle underneath. Across from the dinette to port is the galley with all the amenities you need for travel including a full upright, side-by-side, refrigerator freezer with an icemaker.

- **All sofas recovered 2013**
- **Custom TV hinge to provide storage**

Galley

The forward area of the salon is the large galley featuring under counter lighting, Corian counter tops, and a full size refrigerator/freezer with icemaker. Generous cabinetry features deep pull-out pantry style upper cabinets and additional storage under the Corian counter tops. Across from the galley to starboard is the high gloss teak dinette with seating for 4.

- Full-size refrigerator/ freezer w/ice & water in door
- Trash compactor
- Dishwasher
- 'Insta Hot' hot water heater

- Microwave/convection oven
- Garbage disposal
- Recessed 3-burner electric stove with exhaust fan
- Central Vacuum
- Stackable Washer & Dryer in companionway

Master Stateroom

Located amidships on the port side is a huge master stateroom featuring an island queen berth facing forward and ample storage underneath. High gloss teak nightstands accompanied by twin lamps are on either side of the berth. The cedar-lined hanging locker with dresser and drawer space provides generous storage space. TV/VCR and stereo unit and private head with shower and linen closet are also in the master.

- TV/VCR
- Stereo
- Orthopedic mattress
- Queen berth w/storage under
- Designer bed spread
- Nightstands w/ twin lamps (2)
- Cedar-lined hanging closet
- Dresser with ample drawer space
- Private ensuite head w/Stall shower
- Corian vanity w/sink
- VacuFlush head
- Linen storage closet

Guest Stateroom

Located starboard amidships, the guest stateroom features upper and lower bunks with designer bed spreads and orthopedic mattresses. There is a cedar-lined hanging locker and storage drawers underneath. Ensuite access to the day-head is convenient for the guests in this stateroom. The guest stateroom is provided with a TV/DVD player, as well.

VIP

Located in the bow, the VIP stateroom features a queen berth with additional storage underneath. It is accompanied by an ensuite head and shower and its own 13" TV/VCR.

- 13" TV/VCR
- Orthopedic mattress
- Queen berth w/storage under

- Designer bed spread
- Cedar-lined closet
- Overhead storage cabinets
- Private head w/stall shower
- Corian vanity top
- VacuFlush head

Cockpit

- Fighting chair w/rigging drawer & cover
- Custom tackle center w/bait sink, cutting board
- Teak deck
- In-deck fish box w/macerator and **Eskimo Ice Chipper New 2/2010**
- **New Cockpit Freezer 2/2010**
- Freshwater/saltwater wash down system
- Custom Transom livewell
- **Cockpit Controls**
- **New JL Audio Speaker**
- **Fusion Stereo Remote**

Interior Equipment

- Washing Machine
- Microwave Oven
- Air Conditioning
- Heating
- Hot Water
- Refrigerator
- Fresh Water Maker
- Battery Charger

Electronics

- Depthsounder - Furuno
- Radar - Furuno
- Plotter - NavNet 3D
- Autopilot - Simrad AP 22
- Radio - Fusion
- Compass
- GPS - Garmin 4212
- Cockpit Speakers - JL Audio

- VHF - Icom M5-04

Flybridge - Electronics

- Furuno NavNet 3D
- 25KW Radar
- 3KW Transducer
- Garmin 4212
- Simrad AP22 Autopilot New 4/2014
- (2) Icom IC M5-04 VHF
- Search light
- Fusion Stereo
- New JL Audio Speakers
- **New Intellian SAT TV Installed 2013**
- **All New JL Audio speakers 2013**
- Palm Beach Single handle Controls
- Teaser Reels
- (2) Updated helm seats
- Updated EZ2CY enclosure

Electrical Equipment

- Shore Power Inlet
- Generator
- Automatic & manual battery charger
- Battery disconnect switches
- Battery parallel switch
- 110V, 220V AC electrical system
- 12V, 24V DC electrical system
- 24V & 120V lighting throughout
- 50amp/240V dockside electrical cable
- 20kw Onan generator (hrs) with two voltage stabilizer transformers
- **Underwater lights 4/2013**

Engines

1200 MAN

Port Engine 341 HRS SMOH 11/20/12

Star Engine 2446 HRS SMOH

Port-Replaced injectors 2/01/13

Star-Rebuilt injection pump and Replaced injectors 2/01/13

Replaced all batteries 4/2013

Oil and filter change 3/2015

Engines Painted 8/2012

Mechanical

- **Water maker**
- Trim tabs
- 110V water pump
- (4) Automatic bilge pumps
- Bilge blowers
- Bow thruster w/remote control
- Engine temperature alarm
- Emergency engine stops
- Engine fuel prime pumps
- Eskimo ice machine
- Fiberglass reinforced fuel tanks
- Fire control system
- Hydraulic steering
- Fuel/water separator filters; engines & generator
- Generator fuel prime pump
- Glendinning synchronizer
- Holding tank w/dockside & overboard pump-out
- Oil change system for engines & genset
- Engine gauge panel
- Engine room lights
- Trolling valves
- **Cockpit Controls**

Exclusions

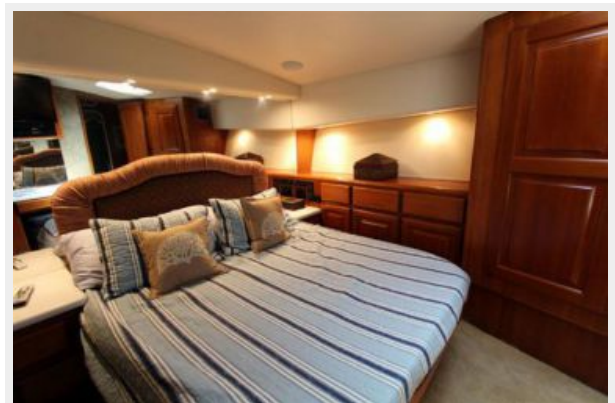
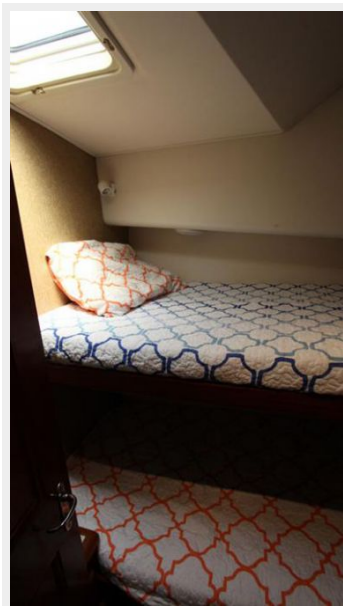
Owner's personal belongings.

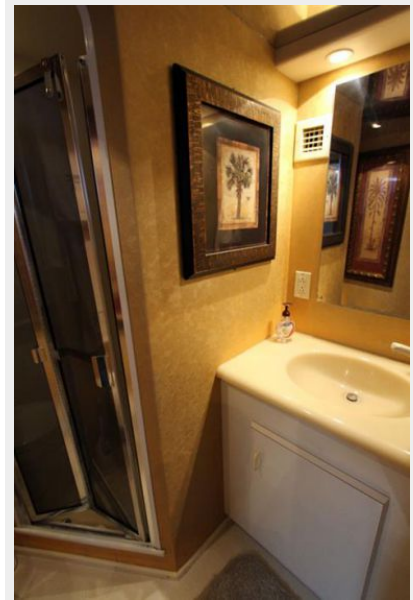
Disclaimer

The Company offers the details of this vessel or yacht in good faith but cannot guarantee or warrant the accuracy of this information nor warrant the condition of the vessel. A buyer should

instruct his representatives, agents, or his surveyors, to investigate such details as the buyer desires validated. This vessel or yacht is offered subject to prior sale, price change, or withdrawal without notice.

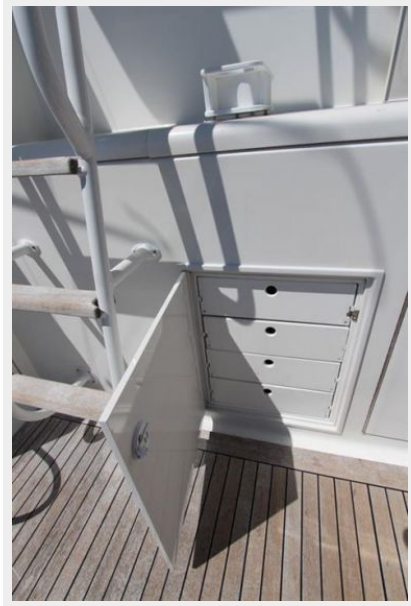
PHOTOS



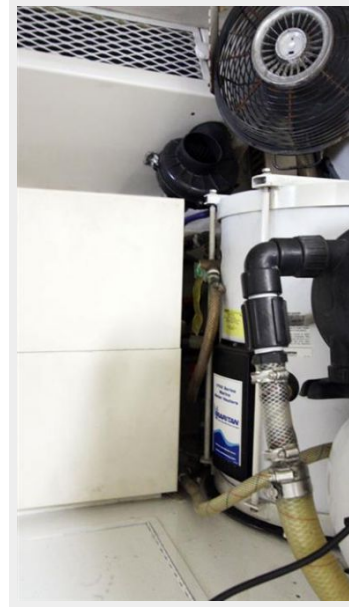
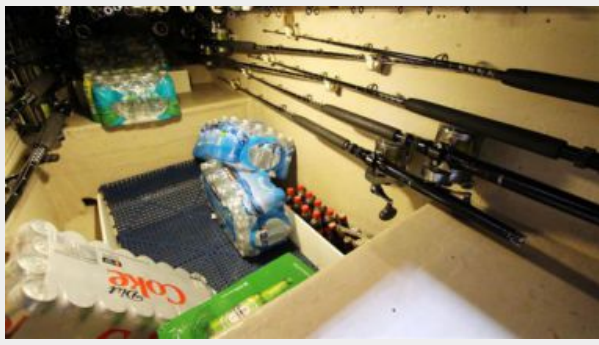


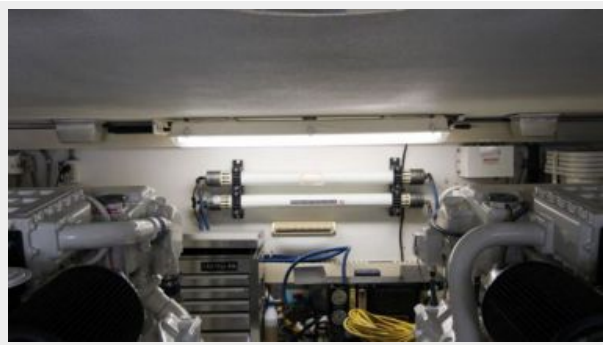
















CONTACTS

Andrey Shestakov, leading yacht broker of the sales department of Shestakov Yacht Sales Inc. Shestakov Yacht Sales Inc., the official representative of the Miami/Fort Lauderdale FL headquarters.

Contact details

Email: andrey@shestakovyachtsales.com

Web: shestakovyachtsales.com/en/

Telephones

USA: +1(954)274-4435

Office hours

Monday – Saturday: **9:00 - 21:00** EDT

Sunday: **closed**

Address



Harbour Towne Marina, 850 NE 3rd St,
STE 213, Dania, FL 33004