

BIRD'S NEST — VIKING



Судостроитель: VIKING

Год постройки: 1995

Модель: Катер для спортивной рыбалки

Цена: **ЦЕНА ЯХТЫ ПО ЗАПРОСУ**

Местонахождение: United States

Длина общая: 58' 0" (17.68m)

Макс. осадка: 5' 3" (1.60m)

Крейс. скорость: 28 Kts. (32 MPH)

Макс. скорость: 33 Kts. (38 MPH)

Купить **Bird's Nest — VIKING** а также выбрать подходящую вам яхту из нашего каталога яхт вам поможет опытный яхтенный брокер Андрей Шестаков. На сегодняшний день компания **Shestakov Yacht Sales Inc.** имеет большое количество яхт в собственном списке продаж, а также тесно сотрудничает со всеми крупными яхтенными производителями по всему миру.

Для того чтобы купить яхту **Bird's Nest — VIKING** а также проконсультироваться по любому вопросу связанному с покупкой, продажей, чартером яхт позвоните по телефону **+7(918)465-66-44**.

ОГЛАВЛЕНИЕ

ОГЛАВЛЕНИЕ	2
ХАРАКТЕРИСТИКИ	4
Обзор	4
Основная информация	4
Размеры	4
Скорость, вместимость и масса	5
Размещение	5
Корпус и палуба	5
Информация о двигателе	5
ПОДРОБНОЕ ОПИСАНИЕ	6
Overview	6
Salon	6
Galley	6
Master Stateroom	7
Guest Stateroom	7
VIP	7
Cockpit	8
Interior Equipment	8
Electronics	8
Flybridge - Electronics	9
Electrical Equipment	9
Engines	9
Mechanical	10
Исключения	10
Отказ от ответственности	10
ФОТОГРАФИИ	12
КОНТАКТЫ	22
Контактная информация	22

Телефоны	22
Время работы	22
Адрес	22

ХАРАКТЕРИСТИКИ

Обзор

"Bird's Nest" has over \$125,000 in recent upgrades: Updated electronics, Intellian SAT/TV, new JL Audio speakers throughout, Palm Beach controls, new salon interior, custom baitwell, hull sides painted, underwater lights and the list goes on!!!

New bottom job, Propspeed, cutlass bearings, serviced all sea strainers and watermaker June, 2015.

Huge interior volume with the (3) stateroom / (3) head layout, soft goods updated 2013 and powered with dependable MAN 1200's. "Birds Nest" boasts a full tower, icemaker, watermaker, teak cockpit and cockpit controls.

There has not been a single expense spared on the maintenance or upkeep of this yacht, and she is guaranteed to be the nicest 58' Viking on the market today!!!!

Основная информация

Тип судна: Катер для спортивной рыбалки

Подкатегория: Convertible

Модельный год: 1995

Год постройки: 1995

Страна: United States

Верх: Full / Tuna Tower

Открытая палуба мостика: Да

Размеры

Длина общая: 58' 0" (17.68m)

Макс. осадка: 5' 3" (1.60m)

Скорость, вместимость и масса

Крейс. скорость: 28 Kts. (32 MPH)

Макс. скорость: 33 Kts. (38 MPH)

Водоизмещение: 81500 Pounds

Вместимость воды: 260 Gallons

Объем топливного бака: 1500 Gallons

Размещение

Всего кают: 3

Всего ком. состава: 3

Корпус и палуба

Материал корпуса: Fiberglass

Информация о двигателе

Двигатели: 2

Производитель: MAN

Тип двигателя: Inboard

Тип топлива: Diesel

ПОДРОБНОЕ ОПИСАНИЕ

Overview

"Birds Nest" boasts a full tower, icemaker, watermaker, teak cockpit and cockpit controls. With over \$125,000 in recent upgrades, she is sure to impress! These upgrades include: Updated electronics, Intellian SAT/TV, new JL Audio speakers throughout, Palm Beach controls, new salon interior, custom baitwell, hull sides painted in 2012, non-skid and covering boards redone 2012, underwater lights installed in 2013 and the list goes on and on!!!! Huge interior volume with the popular (3) stateroom/(3) head layout, soft goods updated in 2013 and powered with dependable MAN 1200's.

There has not been any expense spared with the maintenance and upkeep of this yacht, and she **will not disappoint!!!** **"Birds Nest"** is guaranteed to be the nicest 58' Viking on the market, so call today to set up a viewing!

Salon

Entering through the sliding door from the teak cockpit brings you into the spacious salon. High gloss teak interior with large salon windows both sides and aft provide plenty of natural light. All counter tops are white Corian. Immediately to starboard is the wet bar and Viking electrical panels hidden by high gloss teak cabinets and countertop. Further forward to starboard is the dinette finished in high gloss teak with u-shaped white ultra leather seating arrangement for 4. Above the dinette is a TV fastened to a custom hinge which allows ample storage behind. To port in the salon is the white ultra leather L-shaped sofa with ample storage for plenty of rods and tackle underneath. Across from the dinette to port is the galley with all the amenities you need for travel including a full upright, side-by-side, refrigerator freezer with an icemaker.

- **All sofas recovered 2013**
- **Custom TV hinge to provide storage**

Galley

The forward area of the salon is the large galley featuring under counter lighting, Corian counter tops, and a full size refrigerator/freezer with icemaker. Generous cabinetry features deep pull-out pantry style upper cabinets and additional storage under the Corian counter tops. Across from the galley to starboard is the high gloss teak dinette with seating for 4.

- Full-size refrigerator/ freezer w/ice & water in door
- Trash compactor
- Dishwasher
- 'Insta Hot' hot water heater

- Microwave/convection oven
- Garbage disposal
- Recessed 3-burner electric stove with exhaust fan
- Central Vacuum
- Stackable Washer & Dryer in companionway

Master Stateroom

Located amidships on the port side is a huge master stateroom featuring an island queen berth facing forward and ample storage underneath. High gloss teak nightstands accompanied by twin lamps are on either side of the berth. The cedar-lined hanging locker with dresser and drawer space provides generous storage space. TV/VCR and stereo unit and private head with shower and linen closet are also in the master.

- TV/VCR
- Stereo
- Orthopedic mattress
- Queen berth w/storage under
- Designer bed spread
- Nightstands w/ twin lamps (2)
- Cedar-lined hanging closet
- Dresser with ample drawer space
- Private ensuite head w/Stall shower
- Corian vanity w/sink
- VacuFlush head
- Linen storage closet

Guest Stateroom

Located starboard amidships, the guest stateroom features upper and lower bunks with designer bed spreads and orthopedic mattresses. There is a cedar-lined hanging locker and storage drawers underneath. Ensuite access to the day-head is convenient for the guests in this stateroom. The guest stateroom is provided with a TV/DVD player, as well.

VIP

Located in the bow, the VIP stateroom features a queen berth with additional storage underneath. It is accompanied by an ensuite head and shower and its own 13" TV/VCR.

- 13" TV/VCR
- Orthopedic mattress
- Queen berth w/storage under

- Designer bed spread
- Cedar-lined closet
- Overhead storage cabinets
- Private head w/stall shower
- Corian vanity top
- VacuFlush head

Cockpit

- Fighting chair w/rigging drawer & cover
- Custom tackle center w/bait sink, cutting board
- Teak deck
- In-deck fish box w/macerator and **Eskimo Ice Chipper New 2/2010**
- **New Cockpit Freezer 2/2010**
- Freshwater/saltwater wash down system
- Custom Transom livewell
- **Cockpit Controls**
- **New JL Audio Speaker**
- **Fusion Stereo Remote**

Interior Equipment

- Washing Machine
- Microwave Oven
- Air Conditioning
- Heating
- Hot Water
- Refrigerator
- Fresh Water Maker
- Battery Charger

Electronics

- Depthsounder - Furuno
- Radar - Furuno
- Plotter - NavNet 3D
- Autopilot - Simrad AP 22
- Radio - Fusion
- Compass
- GPS - Garmin 4212
- Cockpit Speakers - JL Audio

- VHF - Icom M5-04

Flybridge - Electronics

- Furuno NavNet 3D
- 25KW Radar
- 3KW Transducer
- Garmin 4212
- Simrad AP22 Autopilot New 4/2014
- (2) Icom IC M5-04 VHF
- Search light
- Fusion Stereo
- New JL Audio Speakers
- **New Intellian SAT TV Installed 2013**
- **All New JL Audio speakers 2013**
- Palm Beach Single handle Controls
- Teaser Reels
- (2) Updated helm seats
- Updated EZ2CY enclosure

Electrical Equipment

- Shore Power Inlet
- Generator
- Automatic & manual battery charger
- Battery disconnect switches
- Battery parallel switch
- 110V, 220V AC electrical system
- 12V, 24V DC electrical system
- 24V & 120V lighting throughout
- 50amp/240V dockside electrical cable
- 20kw Onan generator (hrs) with two voltage stabilizer transformers
- **Underwater lights 4/2013**

Engines

1200 MAN

Port Engine 341 HRS SMOH 11/20/12

Star Engine 2446 HRS SMOH

Port-Replaced injectors 2/01/13

Star-Rebuilt injection pump and Replaced injectors 2/01/13

Replaced all batteries 4/2013

Oil and filter change 3/2015

Engines Painted 8/2012

Mechanical

- **Water maker**
- Trim tabs
- 110V water pump
- (4) Automatic bilge pumps
- Bilge blowers
- Bow thruster w/remote control
- Engine temperature alarm
- Emergency engine stops
- Engine fuel prime pumps
- Eskimo ice machine
- Fiberglass reinforced fuel tanks
- Fire control system
- Hydraulic steering
- Fuel/water separator filters; engines & generator
- Generator fuel prime pump
- Glendinning synchronizer
- Holding tank w/dockside & overboard pump-out
- Oil change system for engines & genset
- Engine gauge panel
- Engine room lights
- Trolling valves
- **Cockpit Controls**

Исключения

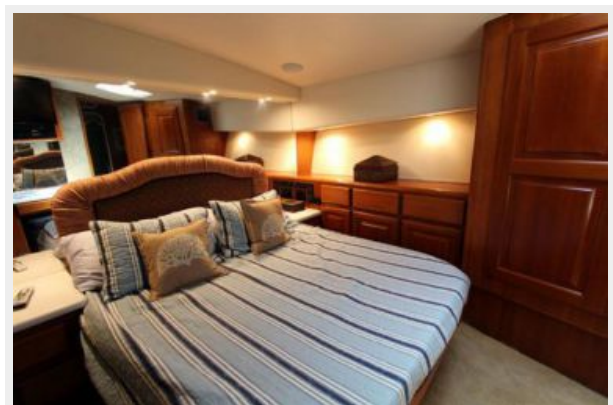
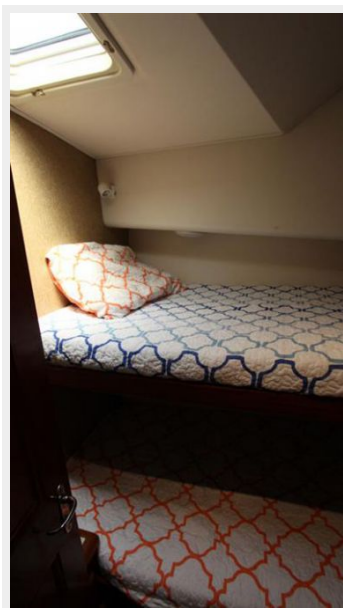
При продаже яхты исключаются личные вещи владельца.

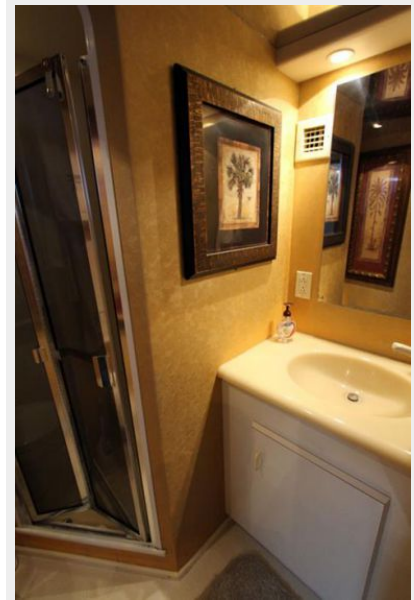
Отказ от ответственности

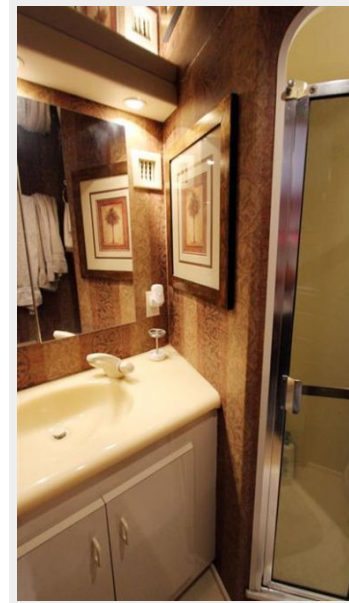
Компания предоставляет описание судна или яхты добросовестно, но не может гарантировать точность этой информации, а также не ручается за техническое

состояние. Покупатель должен проинструктировать своих агентов или оценщиков исследовать представленную информацию более подробно, по собственному желанию. Продажа судна или яхты, изменение цены или снятие с продажи будет происходить без предварительного уведомления.

ФОТОГРАФИИ



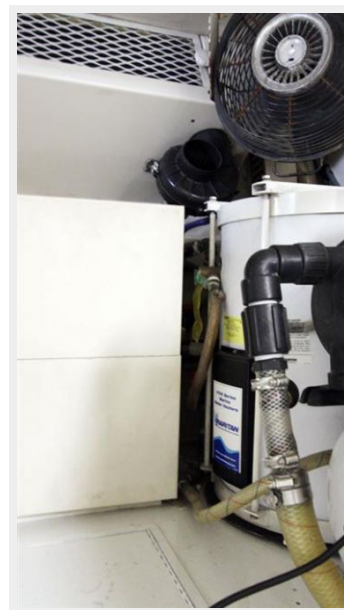
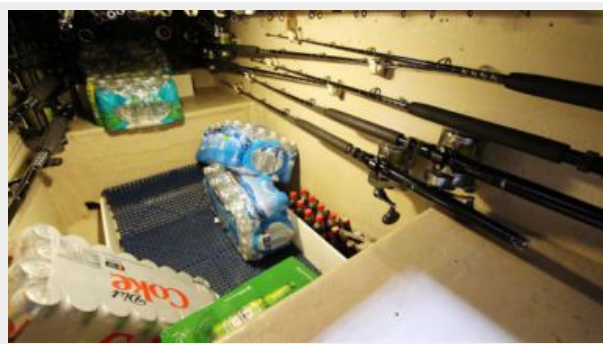


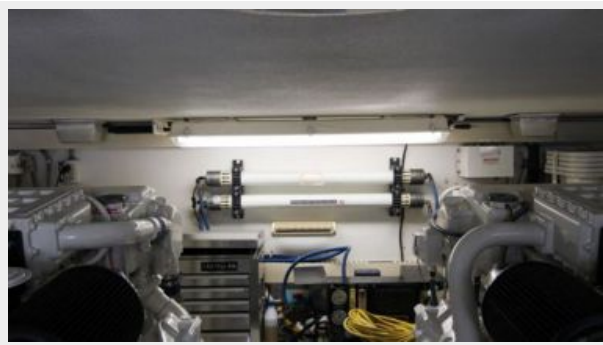
















КОНТАКТЫ

Андрей Шестаков (Andrey Shestakov) – ведущий яхтенный брокер отдела продаж яхт и судов компании Shestakov Yacht Sales Inc. Официальный представитель Shestakov Yacht Sales Inc. для русскоговорящих клиентов в центральном офисе компании в Майами/Форт Лодердейл/Флорида/США.

Контактная информация

Email: andrey@shestakovyachtsales.com

Web: shestakovyachtsales.com

Телефоны

Краснодарский край: **+7(918)465-66-44**

США, Майами, Флорида: **+1(954)274-4435**

Время работы

Понедельник – Суббота: **9:00 - 21:00**
EDT

Воскресенье: **Закрито**

Адрес



Harbour Towne Marina, 850 NE 3rd St,
STE 213, Dania, FL 33004