

## NO NAME — PRINCESS YACHTS



**Builder:** PRINCESS YACHTS

**Year Built:** 2013

**Model:** Motor Yacht

**Price:** PRICE ON APPLICATION

**Location:** United States

**LOA:** 58' 8" (17.88m)

**Beam:** 15' 3" (4.65m)

**Min Draft:** 4' 2" (1.27m)

**Cruise Speed:** 33 Kts. (38 MPH)

**Max Speed:** 36 Kts. (41 MPH)

Our experienced yacht broker, Andrey Shestakov, will help you choose and buy a yacht that best suits your needs **No Name — PRINCESS YACHTS** from our catalogue. Presently, at Shestakov Yacht Sales Inc., we have a wide variety of yachts available on our sale's list. We also work in close contact with all the big yacht manufacturers from all over the world.

If you would like to buy a yacht **No Name — PRINCESS YACHTS** or would like help answering any questions concerning purchasing, selling or chartering a yacht, please call **+1(954)274-4435**

---

# TABLE OF CONTENTS

---

|                              |   |
|------------------------------|---|
| TABLE OF CONTENTS            | 2 |
| SPECIFICATIONS               | 4 |
| Overview                     | 4 |
| Basic Information            | 4 |
| Dimensions                   | 4 |
| Speed, Capacities and Weight | 4 |
| Accommodations               | 4 |
| Hull and Deck Information    | 5 |
| Engine Information           | 5 |
| DETAILED INFORMATION         | 6 |
| Tender                       | 6 |
| Deck                         | 6 |
| Cockpit                      | 6 |
| Helm Station                 | 6 |
| Salon                        | 6 |
| Galley                       | 7 |
| Accommodations               | 7 |
| Owner's Stateroom            | 7 |
| Forward Guest Cabin          | 7 |
| Starboard Cabin              | 7 |
| Electrical System            | 7 |
| Fuel Systems                 | 8 |
| Water Systems                | 8 |
| Fire Equipment               | 8 |
| Bilge Pumps                  | 8 |
| Additional Equipment         | 8 |
| Broker Comments              | 8 |
| Exclusions                   | 9 |

---

|                   |    |
|-------------------|----|
| Disclaimer        | 9  |
| PHOTOS            | 10 |
| Master Stateroom  | 10 |
| Salon             | 10 |
| Lower Deck Layout | 10 |
| Guest Cabin       | 10 |
| Main Deck Layout  | 11 |
| CONTACTS          | 12 |
| Contact details   | 12 |
| Telephones        | 12 |
| Office hours      | 12 |
| Address           | 12 |

---

# SPECIFICATIONS

---

## Overview

---

The only known Princess V57 presently offered for sale in the US. Recently inspected and found in exceptional turn key condition and boasting the highest quality fit and finish and maintenance regime.

Offered with the lower salon option, William 325 Jet tender in garage, opening roof, and the best quality AV/Entertainment and Navionics package.

This boat is all about pure fun in the sun and feeling great about your accomplishments in life! She will make you feel special and offer those you care for the most enjoyable times of their lives!

## Basic Information

---

**Category:** Motor Yacht

**Model Year:** 2013

**Year Built:** 2013

**Country:** United States

## Dimensions

---

**LOA:** 58' 8" (17.88m)

**Beam:** 15' 3" (4.65m)

**Min Draft:** 4' 2" (1.27m)

## Speed, Capacities and Weight

---

**Cruise Speed:** 33 Kts. (38 MPH)

**Max Speed:** 36 Kts. (41 MPH)

**Displacement:** 22900 Pounds

## Accommodations

---

**Total Cabins:** 3

**Sleeps:** 6

**Total Heads:** 2

---

## Hull and Deck Information

---

**Hull Material:** Fiberglass

**Hull Color:** Grey

---

## Engine Information

---

**Engines:** 2

**Manufacturer:** Volvo

**Model:** D13-800

---

## DETAILED INFORMATION

---

### Tender

---

Williams 325 Jet Tender

### Deck

---

Reversible electric anchor winch with foredeck and helm position controls Self-stowing 25kg/55lb Delta anchor with 40m chain Stemhead roller with automatic anchor launch and retrieve Bow rope storage locker Stainless-steel bow, stern, spring and transom cleats Stainless-steel pulpit and guard rails Stainless-steel coachroof handrails Foredeck hatch with integrated skylight PVC rubbing band with stainless-steel insert Full set of IMCO navigation lights Riding light Remote control searchlight Twin electric horns Fuel and water fillers

### Cockpit

---

Self-draining U-shaped seating/dining area Teak table Overhead and low level courtesy lights Tonneau cover Stainless-steel grabrails Cockpit wetbar including sink, refrigerated coolbox, electric barbecue and storage Sunbed aft Dinghy stowage garage beneath sunbed, with hydraulic lift system and electric winch for recovery of tender Access hatch to engine room Access to optional aft/crew cabin 220/240v shore support inlet in locker Life raft stowage Electro-hydraulic raise/lower transom platform with integrated swimming ladder Transom gate leading to bathing platform Hot and cold transom shower Cockpit speakers linked to deck saloon sound system

### Helm Station

---

Twin helm seats Full engine instrumentation Fuel gauges Single-lever engine controls Rudder position indicator Power-assisted steering system with adjustable steering wheel Remote control anchor winch Trim tab controls with indicators Autopilot VHF with DSC R/T Colour chartplotter (12") with GPS Speed and distance log Echo sounder with alarm Remote control searchlight High speed compass Horn button Chart table Twin windscreen wipers Windscreen freshwater pressure wash Bilge pump controls with visual 'pump running' indicator (3)

### Salon

---

U-shaped sofa Dining table Entertainment centre incorporating LED TV/DVD/CD/ MP3 with electric raise/lower mechanism for TV also incorporating refrigerator and bottle and glass storage Overhead downlighters Electric opening roof with skylights and blinds Triple stainless-steel framed sliding doors to cockpit Powered opening windows to port and starboard Timber-laid

flooring

---

## Galley

---

Avonite worktop 3 ring touch control ceramic hob Single stainless-steel sink with Monobloc mixer tap Combination microwave/conventional oven with grill Refrigerator with freezer compartment Waste bin Storage cupboards, drawers and lockers Timber-laid flooring Under-floor storage compartment

---

## Accommodations

---

All cabins feature opening portholes and 240v power points All bathrooms feature electric quietflush freshwater toilets and 240v shaver points Galley worktop Timber-laid deck saloon and galley floors Bathroom worktops with avonite finish Tiled bathroom floors

---

## Owner's Stateroom

---

Large double bed with drawers below Twin bedside tables Vanity unit Wardrobe Full height mirror Sofa Radio/CD/MP3 input Shelves, drawers and storage lockers Downlights and individual berth lights Panoramic windows to port and starboard with opening portlights **En-suite bathroom:** Washbasin with mixer tap Separate stall shower Extractor fan Mirror Storage lockers

---

## Forward Guest Cabin

---

Large double bed with drawers below Wardrobe Full height mirror Deck hatch and fixed skylights with integrated fly screen and blind Storage lockers Downlighters and individual berth lights **En-suite bathroom:** Washbasin with mixer tap Separate stall shower Extractor fan Mirror Storage locker Opening portlight

---

## Starboard Cabin

---

Two single berths Wardrobe with shelf Drawers Storage lockers Downlighters and individual berth lights **En-suite bathroom:** Washbasin with mixer tap Separate stall shower Extractor fan Mirror Storage lockers Opening portlight

---

## Electrical System

---

Main electrical panel with 24v and 220v system controls 24 Volt: 4 x heavy-duty batteries for engine starting 4 x heavy-duty auxiliary batteries Engine alternators charge via split charge relays to isolate engine start batteries from auxiliaries 100-amp 24v float battery charger Battery

paralleling system (for engine start back-up) Remote battery master switches Circuit breakers on all circuits 220/240 Volt: 7kW diesel generator with own starting battery and specially silenced exhaust Shore support inlet Generator/shore support change over switch Power points in owner's stateroom, guest cabins, galley (double) and saloon Polarity check system Earth leakage safety trip Shaver points in all bathrooms

---

## Fuel Systems

---

Twin fuel tanks (in NS8 marine grade alloy) with interconnection system giving 484 gallons/581 US gallons/2200 litres capacity Fuel fillers on both side decks High-capacity fuel filter/water trap Remote fuel cocks in cockpit locker Fuel gauges on helm console

---

## Water Systems

---

Water capacity totalling 106 gallons/127 US gallons/482 litres including 16 gallon/19 US gallon/72 litres hot water calorifier Water heated by engine and 240v immersion heater Automatic water pump with filter Main circuit breaker at switch panel Water level gauge at switch panel Deck filler

---

## Fire Equipment

---

Automatic fire extinguisher in engine room and generatorspace Hand-operated fire extinguishers (5) in: owner's stateroom, forward guest cabin, starboard guest cabin, galley and upper saloon

---

## Bilge Pumps

---

Automatic electric bilge pumps with manual override in: engine room, forward accommodation and aft lazarette (3 in all) High-capacity manual bilge pump with valve system and suction points in same areas

---

## Additional Equipment

---

Fenders (6) and warps (4) Ensign staff First aid kit Boathook Quilted bedspreads in all cabins Tool kit Manual handle for electric winch Ship's document case Owner's manual and engine manual

---

## Broker Comments

---

The only known Princess V57 presently offered for sale in the US. Recently inspected and found in exceptional turn key condition and boasting the highest quality fit and finish and maintenance



regime. Offered with the lower salon option, William 325 Jet tender in garage, opening roof, and the best quality AV/Entertainment and Navionics package. This boat is all about pure fun in the sun and feeling great about your accomplishments in life! She will make you feel special and offer those you care for the most enjoyable times of their lives!

## **Exclusions**

---

Owner's personal belongings.

## **Disclaimer**

---

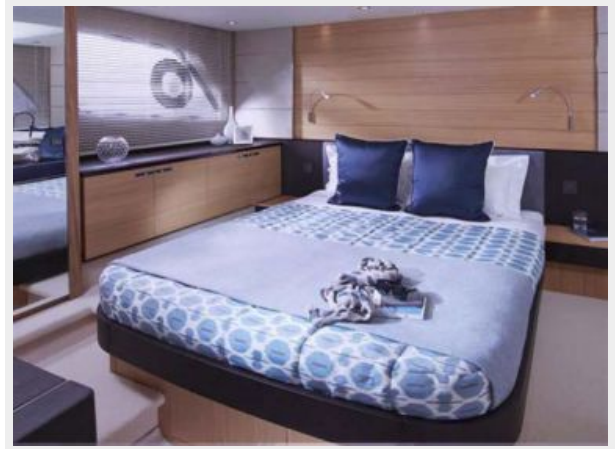
The Company offers the details of this vessel or yacht in good faith but cannot guarantee or warrant the accuracy of this information nor warrant the condition of the vessel. A buyer should instruct his representatives, agents, or his surveyors, to investigate such details as the buyer desires validated. This vessel or yacht is offered subject to prior sale, price change, or withdrawal without notice.

# PHOTOS

### Salon



### Master Stateroom



### Guest Cabin



### Lower Deck Layout



## Main Deck Layout



---

# CONTACTS

---

Andrey Shestakov, leading yacht broker of the sales department of Shestakov Yacht Sales Inc. Shestakov Yacht Sales Inc., the official representative of the Miami/Fort Lauderdale FL headquarters.

---

## Contact details

---

Email: [andrey@shestakovyachtsales.com](mailto:andrey@shestakovyachtsales.com)

Web: [shestakovyachtsales.com/en/](http://shestakovyachtsales.com/en/)

---

## Telephones

---

USA: +1(954)274-4435

---

## Office hours

---

Monday – Saturday: **9:00 - 21:00** EDT

Sunday: **closed**

---

## Address

---



Harbour Towne Marina, 850 NE 3rd St,  
STE 213, Dania, FL 33004