

NO NAME 38 FOUNTAIN — FOUNTAIN



Builder: FOUNTAIN

LOA: 38' 0" (11.58m)

Year Built: 2008

Beam: 10' 6" (3.20m)

Model: Sport Fisherman

Price: PRICE ON APPLICATION

Location: United States

Our experienced yacht broker, Andrey Shestakov, will help you choose and buy a yacht that best suits your needs **No Name 38 Fountain — FOUNTAIN** from our catalogue. Presently, at Shestakov Yacht Sales Inc., we have a wide variety of yachts available on our sale's list. We also work in close contact with all the big yacht manufacturers from all over the world.

If you would like to buy a yacht **No Name 38 Fountain — FOUNTAIN** or would like help answering any questions concerning purchasing, selling or chartering a yacht, please call **+1(954)274-4435**

TABLE OF CONTENTS

TABLE OF CONTENTS	2
SPECIFICATIONS	3
Basic Information	3
Dimensions	3
Speed, Capacities and Weight	3
Accommodations	3
Hull and Deck Information	3
Engine Information	4
DETAILED INFORMATION	5
OVERVIEW	5
Exclusions	7
Disclaimer	8
PHOTOS	9
CONTACTS	12
Contact details	12
Telephones	12
Office hours	12
Address	12

SPECIFICATIONS

Basic Information

Category: Sport Fisherman

Model Year: 2008

Year Built: 2008

Country: United States

Cockpit: Yes

Dimensions

LOA: 38' 0" (11.58m)

Beam: 10' 6" (3.20m)

Speed, Capacities and Weight

Displacement: 14500 Pounds

Water Capacity: 60 Gallons

Fuel Capacity: 400 Gallons

Accommodations

Total Cabins: 1

Total Heads: 1

Hull and Deck Information

Hull Material: Fiberglass

Hull Configuration: Deep Vee

Hull Designer: Fountain

Engine Information

Engines: 3

Manufacturer: Mercury

Model: Verado

Engine Type: Outboard

Fuel Type: Gas

DETAILED INFORMATION

OVERVIEW

Manufacturer Provided Description

The 38 SFC OB is a boat that can get you to the best fishing first, while offering the ultimate in fuel economy, smooth ride, fishability, and luxury accommodations. Powered by three 300-hp Mercury Verado outboards with power steering, the 38 SFC flies over the water at a wave-busting 64+mph (52 mph on just two engines!), with incredible fuel economy. Slow it down to 40 mph and get up to 1.4 mpg with a range in excess of 500 miles.

Below decks, the spacious cabin offers 6' 3" in headroom, high-gloss cherry laminate cabinetry, a gourmet cook top, microwave, fridge, and stainless steel sink. A dinette converts to a large v-berth, and two more can sleep in a second double berth tucked under the cockpit sole. The head, is roomy and offers a VacuFlush toilet and a shower. A huge fish-fighting cockpit with two 250-quart macerating in-sole fish boxes and two above deck livewells, plus a well-thought-out tackle center, puts this fishing and pleasure machine in the big league.

CABIN

- 10,000 BTU A/C in the Cabin and Helm
- Air conditioning
- High gloss cherry laminate cabinetry
- Cooktop stove
- Stainless steel sink
- Microwave oven
- Refrigerator
- Vacuflush Head
- 12V GFCI Outlets in Galley and Head
- Full cabin with galley and enclosed head with shower

ELECTRONICS

-
- Radio
 - CD player
 - Compass
 - Autopilot
 - VCR
 - Cockpit speakers
 - DVD player
 - GPS, touchscreen Garmin
 - TV set
 - VHF
 - Plotter
 - Depth sounder

DECK & COCKPIT

- Two Deluxe Helm Chairs
- Fold away port passenger bench seat
- Starboard aft passenger seat
- Rear Bench Seat
- Fresh/Raw water wash down
- Stainless Steel hardware
- Spotlight
- Swimming ladder
- Rod holders
- Live baitwell
- 7 Rod holders aft of top and 2 Angled Rod Holders
- 2 Aft Spreader Lights and 1 Forward

-
- Transom Livewell 70 gallons with fish box
 - 35 Gallon Starboard Livewell
 - Transom Bait Prep Station
 - Two infloor Fish Boxes 63 Gallons each
 - Port Tackle Storage

ELECTRICAL EQUIPMENT

- Inverter
- Generator
- Shore power inlet
- Electrical Circuit Panel

ENGINE ROOM

- Triple 300HP Mercury Verados
- Electric bilge pump
- Battery charger
- 5.0 KW Kohler Generator, NEW 2010
- 100 V Shore Power with Cable
- 12 V Electrical
- 12V/110V Lighting
- ABYC wiring Standards
- Battery Switches and four new batteries
- 400 gallon Fuel tank
- 60 gallons of water

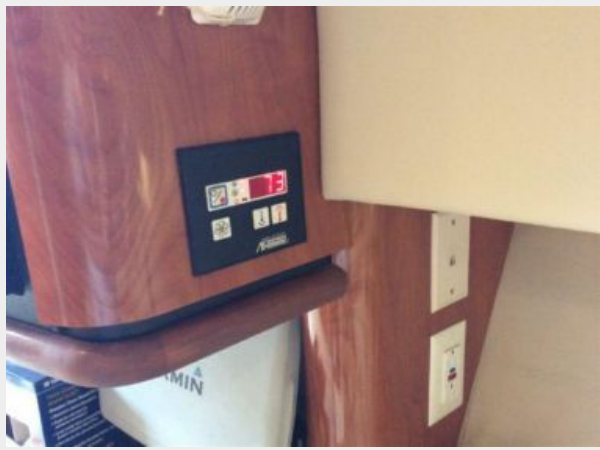
Exclusions

Owner's personal belongings.

Disclaimer

The Company offers the details of this vessel or yacht in good faith but cannot guarantee or warrant the accuracy of this information nor warrant the condition of the vessel. A buyer should instruct his representatives, agents, or his surveyors, to investigate such details as the buyer desires validated. This vessel or yacht is offered subject to prior sale, price change, or withdrawal without notice.

PHOTOS







CONTACTS

Andrey Shestakov, leading yacht broker of the sales department of Shestakov Yacht Sales Inc. Shestakov Yacht Sales Inc., the official representative of the Miami/Fort Lauderdale FL headquarters.

Contact details

Email: andrey@shestakovyachtsales.com

Web: shestakovyachtsales.com/en/

Telephones

USA: +1(954)274-4435

Office hours

Monday – Saturday: **9:00 - 21:00** EDT

Sunday: **closed**

Address



Harbour Towne Marina, 850 NE 3rd St,
STE 213, Dania, FL 33004