

## MIMI — SABRE YACHTS



**Судостроитель:** SABRE YACHTS

**Год постройки:** 2013

**Модель:** Крейсер

**Цена:** ЦЕНА ЯХТЫ ПО ЗАПРОСУ

**Местонахождение:** United States

**Длина общая:** 38' 0" (11.58m)

**Макс. осадка:** 3' 4" (1.02m)

Купить Mimi — SABRE YACHTS а также выбрать подходящую вам яхту из нашего каталога яхт вам поможет опытный яхтенный брокер Андрей Шестаков. На сегодняшний день компания Shestakov Yacht Sales Inc. имеет большое количество яхт в собственном списке продаж, а также тесно сотрудничает со всеми крупными яхтенными производителями по всему миру.

Для того чтобы купить яхту Mimi — SABRE YACHTS а также проконсультироваться по любому вопросу связанному с покупкой, продажей, чартером яхт позвоните по телефону **+7(918)465-66-44**.

# ОГЛАВЛЕНИЕ

---

ОГЛАВЛЕНИЕ	2
ХАРАКТЕРИСТИКИ	4
Обзор	4
Основная информация	4
Размеры	4
Скорость, вместимость и масса	4
Размещение	5
Корпус и палуба	5
Информация о двигателе	5
ПОДРОБНОЕ ОПИСАНИЕ	6
Walkthrough	6
Salon	6
Helm Station	6
Electronics	6
Galley	7
Lower Lounge	7
Master Suite	7
Master Head	7
Electrical System Main Features	7
Mechanics	7
Decks	8
Construction	8
Upgrades & Options	8
Исключения	8
Отказ от ответственности	8
ФОТОГРАФИИ	10
Aft Deck	10
Model Profile	10

Batteries	10
Battery Switch	10
Bilge	10
Circuit Board	10
Dinette	11
Engine Hatch	11
Galley	11
Galley 2	11
Head	11
Hallout	11
Helm	12
Helm 2	12
Master Suite	12
Master TV	12
Pass-Through	12
Pods	12
Guest Berth	13
Engine Room	13
Tool Drawer	13
Upper Lounge TV	13
КОНТАКТЫ	14
Контактная информация	14
Телефоны	14
Время работы	14
Адрес	14

# ХАРАКТЕРИСТИКИ

## Обзор

Dramatic price reduction! The lowest priced late model Sabre 38SE on the market! Owner is purchasing larger yacht and says "SELL!"

Relaunch April 2015 included new bottom paint and zincs and fresh wax. Ready to be sea trialed!

An almost new, well equipped Sabre 38. Low hours and loaded with amenities, in addition to being a lightly used "northern boat," makes this an exceptional yacht.

Built in Maine with the latest in technologies and to standards including NMMA, ABYC, USCG, and CE Category B. Mimi offers a cruising couple an ideal yacht for New England, Chesapeake, Great Loop or beyond including an ideal cruiser for the Bahamas.

Note: Some photos in this listing are from Sabre brochures; interior photos taken Jan. 2015.

## Основная информация

**Тип судна:** Крейсер

**Подкатегория:** Express

**Модельный год:** 2013

**Год постройки:** 2013

**Страна:** United States

**Верх:** Bimini Top

## Размеры

**Длина общая:** 38' 0" (11.58m)

**Макс. осадка:** 3' 4" (1.02m)

## Скорость, вместимость и масса

**Водоизмещение:** 21500 Pounds

**Вместимость воды:** 100 Gallons

**Вместимость сточного бака:** 12 Gallons

**Объем топливного бака:** 300 Gallons

## Размещение

---

Всего кают: 1

Всего коек: 2

Спальные места: 4

Всего ком. состава: 1

## Корпус и палуба

---

Материал корпуса: Fiberglass

Материал палубы: Fiberglass

Комплектация корпуса: Modified V-Hull

Цвет корпуса: blue

## Информация о двигателе

---

Производитель: Volvo Penta

---

# ПОДРОБНОЕ ОПИСАНИЕ

---

## Walkthrough

---

Entry is from the aft deck which becomes an extension of the main salon for expanded entertaining. The interior is finely finished cabinetry of varnished cherry. Ultraleather upholstery, teak and holly soles and sound deadening headliner panels throughout.

From the spacious salon forward is the helm station to starboard and to port is a settee that opens to the galley a few stairs below. Aft is a large seating area that may be curtained off and used as a second cabin for guests. Forward is the generous stateroom with ensuite head.

## Salon

---

Warm cherry interior, teak and holly sole, and large windows provide an elegant and bright ambience. To port is a U-shaped settee on a raised platform that seats 6. Can be easily converted to a double berth. Fold over teak hi/lo dining table. To starboard is an AV center with retractable LED TV on electric lift and storage cabinets.

## Helm Station

---

To starboard is the helm station. Portside includes an L-shaped settee and makes for a comfortable and convenient viewing station adjacent to the helm.

Stidd helm 500N Series helm seat (2) overhead pilot hatches with shades

## Electronics

---

Engine Start/Stop control panel

Volvo Penta color display with: Tachometer w/ hour meter Engine temperature Engine oil pressure Transmission oil pressure Voltmeter Water in fuel warning light Fuel remaining function Fuel consumption function Hi water temp/low oil pressure alarm

Garmin electronics: 5212 display GMR 24HD Radar dome GHP 10 autopilot GMI display w/ thru hull transducer 200 VHF radio Shakespeare SS VHF antenna KVH TV w/ (3) receivers Engine room camera Hailer Ritchie compass CO detector Fusion marine stereo Hella Marine LED navigation lights Kahlenberg horn

---

## Galley

---

The galley is convenient, comfortable, and provides for socialability to be part of the helm or salon guests while being able to prepare gourmet meals to whatever extent is preferred.

Corian countertop Stainless steel sink Two burner Kenyon ceramic glasstop electric stove  
Convection microwave Stainless steel drawer refrigerator/freezer

---

## Lower Lounge

---

This is a large settee and sitting area aft of the galley that can be converted to sleeping quarters and can be curtained off for privacy.

---

## Master Suite

---

Generous and comfortable master stateroom includes centerline island berth with generous stowage including beneath bed drawers, dresser drawers, enclosed shelves, open shelving, and cedar lined hanging locker. Mounted LED LCD TV on electric lift. Sunbrella upholstery.

---

## Master Head

---

Ensuite head is at forward port side of stateroom.

Freshwater head Corian countertop with bullnose Stainless steel sink Storage lockers Shower stall with seat

---

## Electrical System Main Features

---

Kohler Generator 2800w inverter ProSafe galvanic isolator (2) 30 amp shore cords, 50' Xantrex TC2012 battery charger Double 30 to 50 amp adapter Direct TV ready

---

## Mechanics

---

The pod drive system offers excellent fuel economy, quiet operation due to the exhaust getting pushed through the propeller stream, and ease of steering, maneuverability, and docking.

Volvo Penta D4 300hp engines Volvo Penta IPS tansmission Volvo Active Corrosion Protection system Sea-Fire fire suppression Fireboy CO detector CMD-4 Rule bilge pumps Atwood turbo engine room blower Dometic VDT 16k Dometic Elite A/C controls (2) Shurflo water pump Seagull IV water purifier Kuuma hot water heater

---

## Decks

---

The aft deck offers a cockpit that connects with the salon via safety glass swing door and drop down windows to provide an interior/exterior contiguous entertaining area. Large hinged lazarette locker hatch with gas struts opens to engine room.

Port and starboard transom gates Sunbrella seat cushions on aft deck seating Hot & cold transom shower Swim platform, saber white w/ beige non-skid Telescoping swim ladder beneath platform Hurley davit (8) 12" SS cleats

Foredeck: Fresh water washdown 10" SS cleat Windlass rope/chain

---

## Construction

---

V hull with 24" deadrise amidships and 17 degrees at transom and designed to maximize pod efficiency. VIP Resin infused laminate with ISO NPG gelcoat and blended vinyl ester back-up resin. Knitted Biaxial structural E-glass reinforcements. PVC foam coring in hull bottom and topsides. Molded anti-skid deck surfaces. 1 1/3 diameter 316 stainless steel printer rails.

---

## Upgrades & Options

---

This particular yacht includes many options and upgrades not commonly found on sisterships. The approximate \$70,000 worth of upgrades include:

Molded electronics mast for hardtop Fixed hullside portlight Fusion marine stereo w/ 4 speakers and remote Refrigerator under port aft settee Flag blue hull paint Beige non-skid deck Shades on opening ports Telescoping table base in salon w/ filler cushion Upgraded ultra leather buckskin upholstery in salon Sunbrella on forward berth cushion Reverso oil change pump Volvo anti-corrosion protection Searchlight mounted on hardtop Transom hot/cold shower Shore water inlet Chart kit holder Garmin suite Inverter Hurley Davit KVH Engine room camera Hailer

---

## Исключения

---

При продаже яхты исключаются личные вещи владельца.

---

## Отказ от ответственности

---

Компания предоставляет описание судна или яхты добросовестно, но не может гарантировать точность этой информации, а также не ручается за техническое состояние. Покупатель должен проинструктировать своих агентов или оценщиков



исследовать представленную информацию более подробно, по собственному желанию. Продажа судна или яхты, изменение цены или снятие с продажи будет происходить без предварительного уведомления.

# ФОТОГРАФИИ

**Model Profile**



**Aft Deck**



**Batteries**



**Battery Switch**



**Bilge**



**Circuit Board**



**Dinette**



**Engine Hatch**



**Galley**



**Galley 2**



**Hallout**



**Head**



**Helm**



**Helm 2**



**Master Suite**



**Master TV**



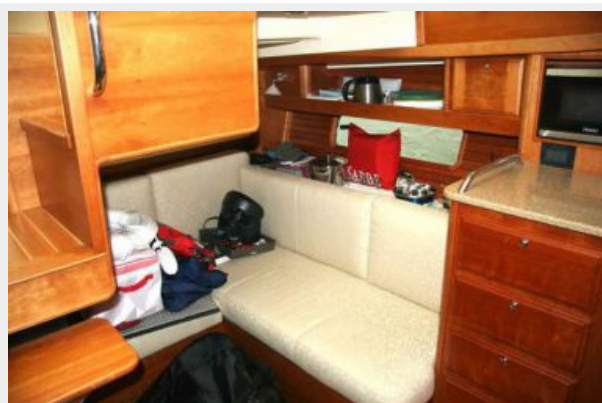
**Pass-Through**



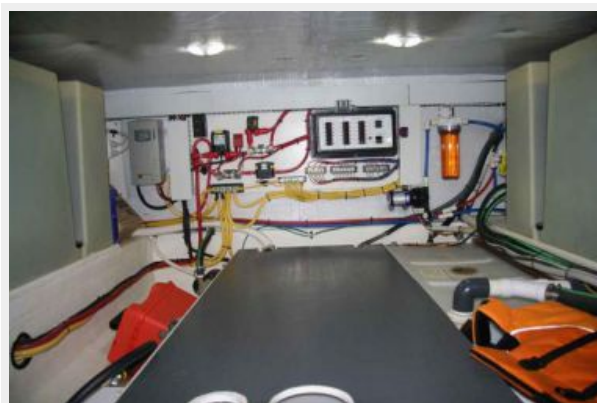
**Pods**



**Guest Berth**



**Engine Room**



**Tool Drawer**



**Upper Lounge TV**



# КОНТАКТЫ

---

Андрей Шестаков (Andrey Shestakov) – ведущий яхтенный брокер отдела продаж яхт и судов компании Shestakov Yacht Sales Inc. Официальный представитель Shestakov Yacht Sales Inc. для русскоговорящих клиентов в центральном офисе компании в Майами/Форт Лодердейл/Флорида/США.

## Контактная информация

---

Email: [andrey@shestakovyachtsales.com](mailto:andrey@shestakovyachtsales.com)

Web: [shestakovyachtsales.com](http://shestakovyachtsales.com)

## Телефоны

---

Краснодарский край: **+7(918)465-66-44**

США, Майами, Флорида: **+1(954)274-4435**

## Время работы

---

Понедельник – Суббота: **9:00 - 21:00**  
EDT

Воскресенье: **Закрето**

## Адрес

---



Harbour Towne Marina, 850 NE 3rd St,  
STE 213, Dania, FL 33004