

SEA BOUND — BURGER



Судостроитель: BURGER

Год постройки: 1996

Модель: Моторная яхта

Цена: **ЦЕНА ЯХТЫ ПО ЗАПРОСУ**

Местонахождение: United States

Длина общая: 100' 6" (30.63m)

Ширина: 22' 0" (6.71m)

Мин. осадка: 5' 11" (1.80m)

Макс. осадка: 5' 11" (1.80m)

Крейс. скорость: 16 Kts. (18 MPH)

Макс. скорость: 19 Kts. (22 MPH)

Купить **SEA BOUND — BURGER** а также выбрать подходящую вам яхту из нашего каталога яхт вам поможет опытный яхтенный брокер Андрей Шестаков. На сегодняшний день компания **Shestakov Yacht Sales Inc.** имеет большое количество яхт в собственном списке продаж, а также тесно сотрудничает со всеми крупными яхтенными производителями по всему миру.

Для того чтобы купить яхту **SEA BOUND — BURGER** а также проконсультироваться по любому вопросу связанному с покупкой, продажей, чартером яхт позвоните по телефону **+7(918)465-66-44**.

ОГЛАВЛЕНИЕ

ОГЛАВЛЕНИЕ	2
ХАРАКТЕРИСТИКИ	5
Обзор	5
Основная информация	5
Размеры	5
Скорость, вместимость и масса	5
Размещение	6
Корпус и палуба	6
Информация о двигателе	6
ПОДРОБНОЕ ОПИСАНИЕ	7
Overview	7
Vessel Walkthrough	7
Main Salon	8
Formal Dining	9
Flybridge	9
Boat Deck	9
Master Stateroom	9
Master Head	9
Guest Stateroom, Port	9
Guest Head, Port	10
Guest Stateroom, Starboard	10
Guest Head, Starboard	10
Captain's Cabin	10
Crew Cabin, Port	10
Crew Mess	10
Foredeck	10
Power	10
Aft Deck	11

Family Room/Country Kitchen	11
Den/Informal Dining	11
Electronics & Navigational Equipment	11
Engine Room & Mechanical Equipment	12
Tenders	12
Exclusions	12
Исключения	12
Отказ от ответственности	12
ФОТОГРАФИИ	14
SEA BOUND	14
Aft Deck	14
Salon Forward	14
Entertainment Center and Custom Desk	14
Formal Dining and Buffet	15
Salon Aft	15
Country Kitchen	15
Owner and Guest Foyer	15
Owner Guest Foyer Aft	15
Master Stateroom	15
Master Stateroom Desk	16
Master Stateroom Lounge	16
Master Bath	16
Guest Stateroom Starboard	16
Guest Head Starboard	16
Guest Stateroom Port	16
Guest Head Port	17
Command Bridge	17
Lower Helm Station	17
Command Bridge Settee	17

Country Kitchen Informal Dining/Den	17
Bridge Deck	17
Bridge Deck	18
Flybridge Helm	18
Sun Deck	18
Sun Deck Seating	18
Foredeck	19
Flybridge Bar and Hardtop	19
Bow Seat	19
Layout	20
КОНТАКТЫ	21
Контактная информация	21
Телефоны	21
Время работы	21
Адрес	21

ХАРАКТЕРИСТИКИ

Обзор

SEA BOUND exemplifies the timeless, classic look and feel that Burger is known for. Her Butternut wood interior, carefully hand-finished with raised panels, creates a soft and rich interior. She is open, uncluttered, and very comfortable inside and out.

Основная информация

Тип судна: Моторная яхта

Подкатегория: Raised Pilothouse

Модельный год: 1996

Год постройки: 1996

Год обновления: 2014

Страна: United States

Верх: Hardtop

Размеры

Длина общая: 100' 6" (30.63m)

Ширина: 22' 0" (6.71m)

Мин. осадка: 5' 11" (1.80m)

Макс. осадка: 5' 11" (1.80m)

Скорость, вместимость и масса

Крейс. скорость: 16 Kts. (18 MPH)

Крейсерская скорость поворота: 2100 Kts.

Макс. скорость: 19 Kts. (22 MPH)

Вместимость воды: 1250 Gallons

Объем топливного бака: 10250 Gallons

Размещение

Всего кают: 3

Спальные места: 6

Всего ком. состава: 5

Каюты экипажа: 3

Койки экипажа: 4

Корпус и палуба

Материал корпуса: Aluminum

Материал палубы: Teak

Комплектация корпуса: Semi-Displacement

Дизайнер корпуса: Don O'Keefe

Информация о двигателе

Двигатели: 2

Производитель: Caterpillar

Модель: 3412`

Тип двигателя: Inboard

Тип топлива: Diesel

ПОДРОБНОЕ ОПИСАНИЕ

Overview

SEA BOUND exemplifies the timeless, classic look and feel that Burger is known for. Her Butternut wood interior, carefully hand-finished with raised panels, creates a soft and rich interior. She is open, uncluttered and very comfortable inside and out. SEA BOUND is a beautiful Don O'Keefe designed Burger motor yacht originally built and delivered in 1996. Now, she is a new, timeless, traditional, classic but contemporary yacht that is striking inside and out. She still maintains all of her original light butternut woods and custom carpentry throughout. From all aspects, SEA BOUND is now an almost new 2014 Burger Yacht. In 2014 she had not only a complete refit, but an almost total upgrade of all systems and an extensive exterior modernization. Sleeker and more purposeful, almost everything inside and outside has been replaced or totally upgraded to 2014 standards. Many of the notable changes and upgrades are shown in their respective listing areas of this brochure. Notable changes and upgrades are: Major exterior design update including new electronics/navigation mast; new window designs; newly painted striking Kingston grey hull, topsides and mast; newly painted windows and hardtop. Major and total refit of interior- new furniture, new soft goods, open contemporary interior; upgrades in heads, galley; new desk/office in main salon; new carpeting and flooring throughout; upgraded electrical, and plumbing. Created new sleek den/library with 40" TV off the galley (also can be used as intimate eating area). Created and designed new indoor/outdoor room on open aft deck. New large sofa/settee, occasional chair, cocktail tables, separate custom designed dining table for 8, refrigerator, ice maker, 46" fold-up TV, and hot and cold sink. New fully independent air conditioning and heat in this area for all year use. It can be totally enclosed with new isinglass enclosures with doors that follow salon window lines." Eleven new Samsung Smart TV's - 46" Aft Deck, 50" Salon, 22" Galley, 40" Den, (3) 22" in crew rooms, (2) 32" in Guest cabins, 40" in Master Stateroom. 32" Sundeck, Pilothouse Nav Screen. Many with Surround Sound. Blu Ray Players in most locations. New KVH HD7 Satellite system, receivers and remotes. Video recording, On Demand TV shows, Roku, Pandora, Sirius, Hulu, Netflix. Full WiFi/4G LTE Cellular throughout boat. New Headhunter sewage treatment plant; (5) new headhunter toilets; (2) Fresh water pressure pumps New Cruisair Air Conditioning Plant. (2) new 6 ton chillers; (1) 5 ton refurbished chiller equals 17 tons. New computer control system boxes. Reverse cycle and auxiliary heat. (2) Saltwater cooling pumps.(2) chill water circulating pumps. (2) independent CruisAir Air Conditioning/Heat compressors of total 3 tons for aft deck space. Total boat 20 tons air conditioning. (2) CAT 3412 engines completely rebuilt and upgraded to 1380 hp each. (2) Northern Lights 40 kw generators fully rebuilt. Electrical ends rebuilt 1 year ago 2013. All new Glass Navigation electronics suite in Pilothouse and on Flybridge. All new exterior canvas covers, eisenglass and cushions. Serviced or rebuilt hydraulics, stabilizers, cutlass bearings, engine couplers, props, rudders, thruster, etc. New engine room piping and valves Tank work: fuel, black water, gray water Exhaust work 2010, 2012 (2) sets washers and dryers

Vessel Walkthrough

Enter into the large aft deck through port and starboard boarding gates. The aft deck features a large aft settee plus a large custom designed high gloss teak dining table with eight chairs. There are wing doors, enclosure curtains, flat panel TV and entertainment system, plus a built in Cruise Air system in 2 cabinets plus refrigerator and ice machine. Enter the salon through a framed glass door with two matching glass panels and two 45° glass windows port and starboard for a panoramic view from inside. In the salon there is a comfortable furniture grouping to port featuring a L-shaped sofa, occasional chairs, and a coffee table facing the view aft. To starboard is a built in desk, 50" flat panel Samsung TV on a lift and storage cupboards leading up the starboard side to the formal dining area. The dining area is separated from the main salon by a granite topped buffet and features a custom designed burl oval dining table with eight rattan and leather chairs. There are silhouette blades throughout the salon. Full china service stores away in the forward bulkhead above a hidden refrigerator and icemaker. Forward in the salon are port and starboard sliding doors to the side decks. There is grey wool carpet throughout the main salon and tile inside the side door foyers. Forward on the port side is a day head and to starboard a side passageway leading forward past the raised pilothouse to the galley and den. There is a door between the wheelhouse and galley to ensure privacy. The raised pilothouse provides a 180 degree view and has an L-shaped settee. On the starboard side of the pilothouse, a sliding hatch leads to the Flybridge. The flybridge, covered by a custom hardtop, has a curved console that provides a clear view of the instruments. To port, a large forward facing settee for guests to ride. A centrally located service area has a refrigerator, freezer and icemaker as well as twin electric charcoal grills and a sink, all hidden beneath a Corian countertop. In the aft portion of the flybridge there are two L-shaped settees with triangle corner tables for entertaining. Further aft is the boat deck featuring a 17' Boston Whaler dinghy and 3000lb Nautical Structures davit. Back inside, walking forward to starboard, you enter a spacious country kitchen featuring Silestone countertops, gourmet cooking equipment and great visibility outside. The galley is open to a new den/study featuring an L-shape lounge, 40" Samsung flat panel TV and built in table for entertaining and intimate dining. Forward and down from the galley leads to the captain, crew and crew lounge. Back to the main salon is a stairway leading down to an elegant foyer for the owner and guest cabins. Forward is the full beam master cabin featuring a king sized bed, his and her cedar lined walk-in closets, a desk, abundant storage port and starboard, club chair and 40" Samsung flat panel TV. The master bath features a water closet, large shower with dual heads plus steam, a vanity with a French limestone countertop and two sinks. Aft are the two equally proportioned guest staterooms. The port stateroom features a queen sized bed, two cedar-lined hanging lockers, with an ensuite head and shower. The starboard stateroom features twin beds, two cedar-lined hanging lockers, with an ensuite head and tub/shower.

Main Salon

Aft bulkhead with 2 glass panels, matching centerline framed glass door with two 45° windows for a panoramic view Custom built-in desk and chair 50" Samsung flat panel TV on lift Buffet storage cabinets High-hat lighting in overhead (2) occasional chairs (1) stainless steel chair (aft) (1) stainless steel table (corner) with lamp Stainless steel round table with glass top L-shaped sofa Silhouette blinds Stereo with RTC controls

Formal Dining

Built-in crystal/barware service storage with granite top separating dining room Custom crafted oval burl wood table (8) Ratan/leather chairs Silhouette blinds

Flybridge

Center Bar with hard top and signal mast High-hat lighting under hard top (4) Flood Lights (2) Radar Scanners Refrigerator Freezer Gagganu BBQ Sink Crown helm seat Bench seat to port L-shaped settee to starboard (2) L-shaped settees aft (2) Tables - triangle crown stainless steel bases All new cushions Sunbrella (grey with white striping) Deck lighting (2) Stainless steel teak chairs Caterpillar controls Garmin GPS Screen Nobeltec and Radar Furuno RD 33 Carlisle and Finch 12" search light New switches 2F Electronic ICOM VHF Van Der Velden bow thruster

Boat Deck

17' Boston Whaler with 90 hp Mercury (2) 3000lb Nautical structures davit Removeable chocks (2) Elliott 10 man Liferafts KVH Sat TV Life ring

Master Stateroom

Full beam master King size bed (forward bulkhead) Fabric headboard Desk & desk chair starboard (2) nightstands Grey wool carpeting Swivel leather chair Reading lights Bookshelf Samsung 40" flat panel TV Double door entry High-hat lighting Speakers Stereo with RTI remote (4) port lights (4) Hunter Douglas silhouette blinds (2) Walk-in wardrobes Rope lighting under bed Digital A/C control

Master Head

Ensuite with water closet Large stall shower with glass door enclosure (2) shower heads Steam shower (2) sinks with gold fixtures Marble counter top Large framed mirror Heated towel bar Hunter Douglas silhouette blinds

Guest Stateroom, Port

Queen size bed athwartship with drawers underneath (2) Night stands (2) Lamps Ottoman (2) Hanging lockers Grey wool carpet Linen closet High-hat lighting Reading lights 32" Samsung flat panel TV Samsung receiver Speakers Stereo (2) Port Lights (2) Hunter Douglas silhouette blinds Rope lighting under bed Digital A/C control

Guest Head, Port

Ensuite with stall shower Vanity with sink Gold fixtures Head Stall shower with glass enclosure (2) Shower heads (1 hand held) (2) Towel bars Framed mirror High-hat lighting Hunter Douglas silhouette blind

Guest Stateroom, Starboard

Twin beds athwartship with drawers underneath (3) Nighstands (2) Lamps Reading Lights (2) Hanging lockers Grey wool carpet 32" Samsung flat panel TV Samsung receiver (2) speakers RTI control High-hat lighting Rope lighting under beds (2) Port Lights (2) Hunter Douglas silhouette blinds Digital A/C control

Guest Head, Starboard

Ensuite with tub Vanity with sink and gold fixtures Marble top Head (2) shower heads (1 hand held) Framed mirror Hunter Douglas silhouette blind

Captain's Cabin

Double centerline bed Amtico vinyl flooring (2) closets Drawers 22" Flat panel TV VCR (2) speaker High-hats Escape Hatch **Head** Head-hunter head Vanity sink Shower High-hat lighting

Crew Cabin, Port

Upper and lower bunks Hanging locker Head and shower 22" Flat panel TV

Crew Mess

New GE washer and dryer Folding table Ironing board Microwave Refrigerator Hanging Locker Drawers Reading lights High-hat lighting 22" Flat panel TV VCR Speakers

Foredeck

Teak decking Foredeck settee Escape hatch from crew Forward teak settee Teak cap rails Freeman hatch to chain locker (2) Maxwell windlasses Through hull anchors (2) speakers Boswan's locker Life Ring Cleats Haise pipes 2 x 350' chain

Power

100 amp single phase shore power with Glendinning cable master 100 amp three phase shore power with Glendinning cable master

Aft Deck

Port and Starboard boarding gates Aft settee Fixed teak dining table with (2) stainless steel table bases (8) Teak & stainless steel chairs (7) High-hat exterior stainless steel lighting fixtures Club occasional chair Aft deck enclosure Lucite wing doors Port and Starboard aft-warping capstans (4) speakers Stereo Custom cabinet with built in A/C port (Cruisair) Custom cabinet with Vinotemp refrigerator and Scottsman ice maker; built in Cruisair A/C, and hot and cold sink starboard with custom teak serving trays Aft bulkhead full overhead to sole glass windows with 45° windows port and starboard Camera Cleats Halse pipes Teak decking Swim platform Entrance to engine room through transom door Safety railing (starboard) Teak cap rails Emergency deck access to engine room (2) built in life rings Curved staircase to swim platform Walk around side decks Deck lighting overhead of side decks 8 step Marquip Tide Ride boarding ladder with teak handrail Frameless deckhouse windows with custom black mask Port and Starboard fuel fills Underwater lights **Power:** 100 amp single phase shore power with Glendinning cablemaster 100 amp three phase shore power with Glendinning cablemaster

Family Room/Country Kitchen

Amtico vinyl flooring 36" sub zero 501 refrigerator 6 Burner Viking Professional cooktop Viking Professional oven Samsung microwave (2) under-mount sinks Built in Instant Hot Insinkerator disposal Kitchen Aid dishwasher Keurig Espresso; Cuisinart coffee maker Oster toaster oven Built in trash and recycling cabinet Silestone counter tops Wood cabinets (2) overhead hatches for natural lighting 22" Samsung flat panel TV (2) speakers Stereo High-hat lighting Hunter Douglas silhouette blinds

Den/Informal Dining

L-shaped built-in settee Occasional chair Table Lamp (2) Lucite kitchen dividers Built-in book shelf Built-in table with stainless steel base 40" Samsung flat panel TV Hunter Douglas silhouette blinds

Electronics & Navigational Equipment

Pilothouse: (2) Green Marine 19" LED Monitors Garmin GPSMAP 8000 Series Chartplotter w/ 15" Screen Garmin 12KW Radar 4' open array Garmin Weather System 2 Icom 1C-M604A VHF's 1 SEA 156 VHF Simrad AP70 Auto Pilot. Furuno F1-501 Wind/Speed Furuno RD-33 Remote Display Furuno GP-150 GPS. Furuno 2107 Radar/ARPA. 12KW. 6.5' open array Simrad RGC50 Gyro Compass Raymarine AIS 950 Class A Nobeltec TimeZero Trident V1.0 Chart/ Navigation

System Garmin Digital Depth system Furuno digital depth and temperature system Carlisle & Finch Search Light with controls at both stations 4 closed circuit color cameras with monitoring system. All new antennas **Flybridge**: (1) Green Marine 15" LED Monitor Garmin GPSMAP 8000 Series Chartplotter w/15" screen Garmin 12KW Radar 4" open array (1) ICOM 1C-M604A VHF Simrad AP70 Auto Pilot Furuno RD-33 Remote display Furuno 2107 Radar/ARPA 12KW 6.5" open array with control Simrad RGC50 Gyro Compass

Engine Room & Mechanical Equipment

One of the quietest Burgers built with multi-density vibration-absorbing mounts for the engines, and gearboxes as well as sound attenuating floor/wall panels **SEA BOUND** is the first vessel in the U.S. to have installed the Van de Velden central hydraulic system. 2 x 1380 hp CAT 3412 (Majored/updated in 2014) Heat exchangers Turbos rebuilt (4) Glenenning cablemasters Kenmore washer/dryer (2) 40 kw 1200 RPM (rebuilt Aug 2014 - 110 hours) V Drive ZF gearboxes Koop Nautic Central Hydraulic System Koop Nautic Stabilizers Alfa Laval Air compressor for horns, ships air whistle & wipers Hydraulic power packs Head Hunter sewage system Atlas SPA 45M-B (2) Sentury Battery Chargers (3) Chillers (2 new) (2) Sea Chests (2) Hot water heaters Watermaker 1200 GPD Passarelle Engine room sea ladder for engine checks (2) new raw water A/C pumps (2) cameras

Tenders

17' Boston Whaler with 90 hp outboard

Exclusions

Potential purchasers should assume that those items aboard vessel, which are not specifically listed in this specification sheet, are excluded from the sale.

An exclusion list will be furnished upon request. The name **SEA BOUND** is excluded from the sale of the vessel.

Исключения

При продаже яхты исключаются личные вещи владельца.

Отказ от ответственности

Компания предоставляет описание судна или яхты добросовестно, но не может гарантировать точность этой информации, а также не ручается за техническое

состояние. Покупатель должен проинструктировать своих агентов или оценщиков исследовать представленную информацию более подробно, по собственному желанию. Продажа судна или яхты, изменение цены или снятие с продажи будет происходить без предварительного уведомления.

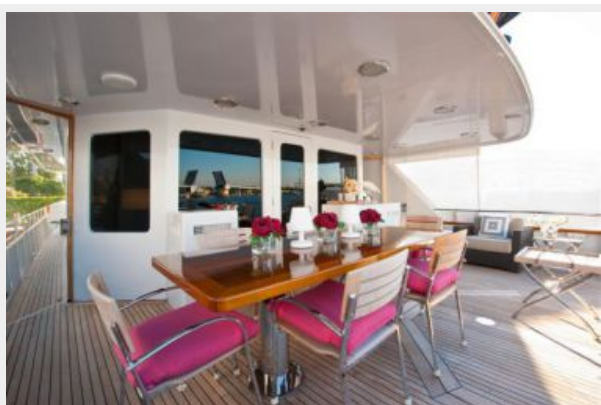
ФОТОГРАФИИ



SEA BOUND



Aft Deck



Salon Forward



Entertainment Center and Custom Desk



Formal Dining and Buffet



Salon Aft



Country Kitchen



Owner and Guest Foyer



Owner Guest Foyer Aft



Master Stateroom



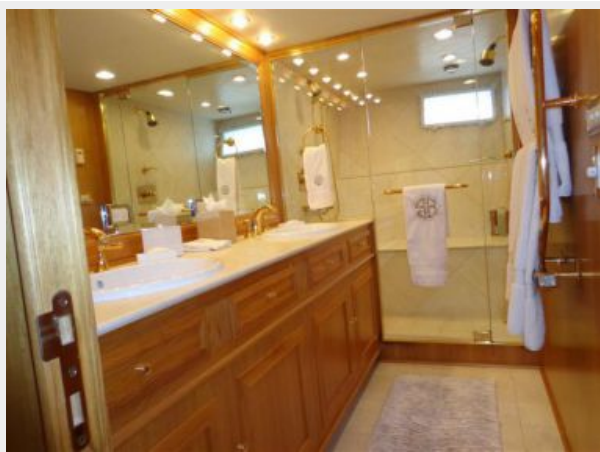
Master Stateroom Desk



Master Stateroom Lounge



Master Bath



Guest Stateroom Starboard



Guest Head Starboard



Guest Stateroom Port



Guest Head Port



Command Bridge



Lower Helm Station



Command Bridge Settee



Country Kitchen Informal Dining/Den



Bridge Deck



Flybridge Helm



Bridge Deck



Sun Deck Seating



Sun Deck



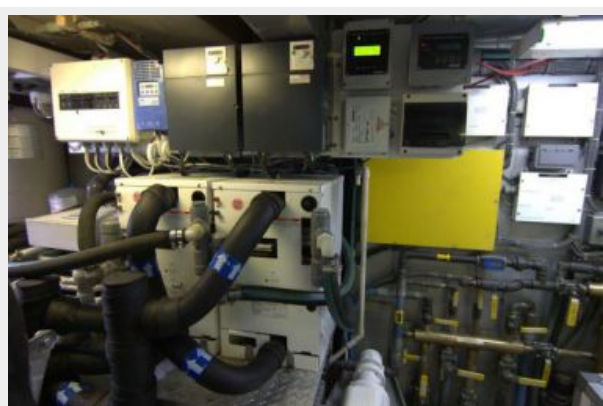
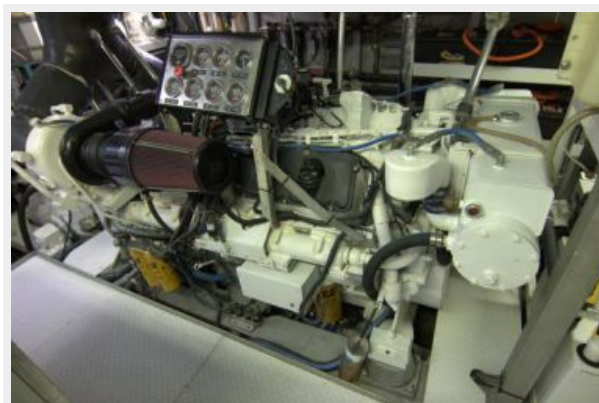
Flybridge Bar and Hardtop



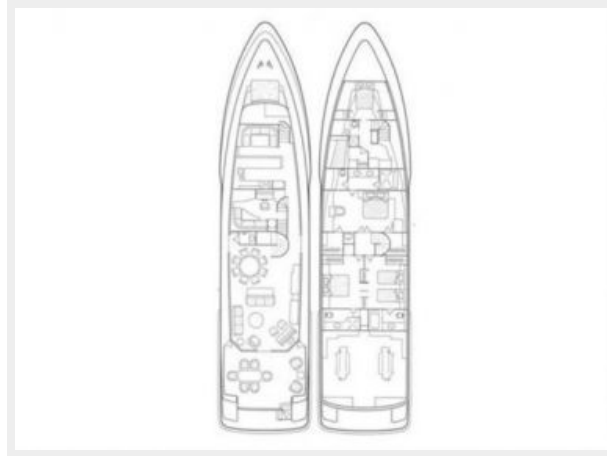
Foredeck



Bow Seat



Layout



КОНТАКТЫ

Андрей Шестаков (Andrey Shestakov) – ведущий яхтенный брокер отдела продаж яхт и судов компании Shestakov Yacht Sales Inc. Официальный представитель Shestakov Yacht Sales Inc. для русскоговорящих клиентов в центральном офисе компании в Майами/Форт Лодердейл/Флорида/США.

Контактная информация

Email: andrey@shestakovyachtsales.com

Web: shestakovyachtsales.com

Телефоны

Краснодарский край: **+7(918)465-66-44**

США, Майами, Флорида: **+1(954)274-4435**

Время работы

Понедельник – Суббота: **9:00 - 21:00**
EDT

Воскресенье: **Закрито**

Адрес



Harbour Towne Marina, 850 NE 3rd St,
STE 213, Dania, FL 33004