

## BRAGANZA — E. DRIDGE, EMSWORTH



**Судостроитель:** E. Dridge, Emsworth

**Год постройки:** 1992

**Модель:** Моторная яхта

**Цена:** ЦЕНА ЯХТЫ ПО ЗАПРОСУ

**Местонахождение:** United Kingdom

**Длина общая:** 50' 0" (15.24m)

**Ширина:** 14' 0" (4.27m)

**Мин. осадка:** 3' 6" (1.07m)

**Крейс. скорость:** 20 Kts. (23 MPH)

**Макс. скорость:** 28 Kts. (32 MPH)

Купить **BRAGANZA — E. Dridge, Emsworth** а также выбрать подходящую вам яхту из нашего каталога яхт вам поможет опытный яхтенный брокер Андрей Шестаков. На сегодняшний день компания **Shestakov Yacht Sales Inc.** имеет большое количество яхт в собственном списке продаж, а также тесно сотрудничает со всеми крупными яхтенными производителями по всему миру.

Для того чтобы купить яхту **BRAGANZA — E. Dridge, Emsworth** а также проконсультироваться по любому вопросу связанному с покупкой, продажей, чартером яхт позвоните по телефону **+7(918)465-66-44**.

# ОГЛАВЛЕНИЕ

---

ОГЛАВЛЕНИЕ	2
ХАРАКТЕРИСТИКИ	4
Обзор	4
Основная информация	4
Размеры	4
Скорость, вместимость и масса	4
Размещение	4
Корпус и палуба	5
Информация о двигателе	5
ПОДРОБНОЕ ОПИСАНИЕ	6
Broker's Comments	6
Construction	6
Machinery	7
Electrical Systems	8
Plumbing Systems	9
Tankage	10
Navigation Equipment	11
Domestic Equipment	11
Accommodation	12
Deck Equipment	14
Исключения	15
Отказ от ответственности	15
ФОТОГРАФИИ	16
КОНТАКТЫ	24
Контактная информация	24
Телефоны	24
Время работы	24
Адрес	24



# ХАРАКТЕРИСТИКИ

## Обзор

Beautifully refitted Vortex 47 which must be seen to be fully appreciated. Brand new Ray nav. kit, linings, sparkling rebuilt Detroit's, new teak, paint, windows and frames - stunning.

## Основная информация

Тип судна: Моторная яхта

Модельный год: 1992

Год постройки: 1992

Год обновления: 2011

Вид обновления: and 2015

Страна: United Kingdom

## Размеры

Длина общая: 50' 0" (15.24m)

Ширина: 14' 0" (4.27m)

Мин. осадка: 3' 6" (1.07m)

## Скорость, вместимость и масса

Крейс. скорость: 20 Kts. (23 MPH)

Макс. скорость: 28 Kts. (32 MPH)

Водоизмещение: 48501.69764 Pounds

Вместимость воды: 356.6322702 Gallons

Объем топливного бака: 660.43013  
Gallons

## Размещение

Всего кают: 2

Всего коек: 5

Всего ком. состава: 2

## Корпус и палуба

---

**Материал корпуса:** GRP

**Комплектация корпуса:** Semi-Displacement

**Отделка корпуса:** Fiberglass

**Дизайнер корпуса:** Roland Paxton/TT Boat Designs

## Информация о двигателе

---

**Двигатели:** 2

**Производитель:** Detroit Diesel

**Модель:** 6-71Ti

**Тип двигателя:** Inboard

**Тип топлива:** Diesel

---

# ПОДРОБНОЕ ОПИСАНИЕ

---

## Broker's Comments

---

This highly capable offshore cruiser has been completely refitted over the past 4 years to an exceptionally high standard, and truly must be viewed. Her engines have been dealer-overhauled; she has new electronics, paint, teak and is simply stunning.

## Construction

---

*RCD Status: Our understanding is that the yacht is exempt from the essential safety requirements of Directive 94/25EC (Recreational Craft Directive) as she was built and placed into use within the EU prior to 1998.*

*Part 1 British Registered.*

*Hull & Superstructure Construction:*

- Hand laid chopped strand mat, woven rovings and Kevlar in polyester resin.
- Epoxy coating below the waterline and in bilges (bilges re-painted during refit).
- Foam cored frames and stringers.
- Ply bulkheads and deck stiffening.
- Lay-up weights (reinforcement only)
- Keel - 9 3/4 oz/ftsq (3.0kg/msq)
- Bottom - 23 1/4 oz/ftsq (7.0kg/msq)
- Chines - 42oz/ftsq (12.8kg/msq)
- Topsides - 16 3/4 oz/ftsq (5.1kg/msq)
- Deck - 10 3/4 oz/ftsq (3.3kg/msq)
- Woven Kevlar incorporated in the leading edges of the waveguides, stem and other critical areas. The wave guides are complex box sections -layers of GRP/foam/GRP and can be completely sheered off without damaging the integrity of the hull.

- Watertight bulkhead to forecabin.
- Teak interior finish, teak and holly sole boards in galley and forecabin only - carpet elsewhere (re-varnished 2015).
- Superstructure re-painted with Awlcraft 2000 Cloud White (2012).
- Hull re-painted with Awlcraft 2000 Deep Blue (2012).
- Hempel Hard Racing black antifoul (2015), red boot top.
- International Perfect Plus varnish.
- Rubbing strakes renewed at refit, including mahogany backing.

#### *Deck Construction:*

- 12mm teak laid decks and aft cockpit (2015).
- GRP decking painted with International Interdeck Grey (2012).

## **Machinery**

---

#### *Engine & Gearboxes:*

- Twin Detroit 6-71 Ti, 485hp diesel engines (1992 – full dealer overhaul (engines out – 2015) – sea-trial hours only.
- Kobelt single lever engine controls.
- Twin Disc 507-2A 1.98:1 reduction gearboxes (checked at refit) with Halyard Marine Aquadrives (Aquadrives overhauled by Halyard at refit).
- Cross-linked raw water strainers, each capable of supplying both engines at cruising speed.
- Twin switchable Racor, primary fuel filters with water detectors and monitoring to inner helm console.
- Exhausts running outboard aft via silencer boxes (approx. 200cm x 50cm) in aft cabin carcassing, to transom outlets. (removed, inspected and reinstalled during refit).
- Halyard exhaust overheat alarms with monitors to inner helm console.

*Maintenance & Performance:*

- Engine hours: sea-trial running in
- Cruising speed: 20/22 knots.
- Max speed: c.28 knots.
- Average cruising range: calculated around 500nm

*Propulsion & Steering:*

- 2.5" stainless steel propeller shafts with sea-water cooled packed glands.
- 27.5" x 34" four bladed bronze propellers (new 2009).
- Electric 24V bow thruster (2000) with controls at both helms.
- Hydraulically-assisted wheel steering via rod linkage.
- Electro-hydraulic Bennett trim tabs and indicators to both helms.

*Other Mechanical Equipment:*

- All seacocks stripped and overhauled at refit.

## Electrical Systems

---

*Voltage Systems:*

- 24V DC ships system.
- 240V AC shore supply.
- All low voltage wiring renewed at refit with correct marine tinned wire.
- 12V droppers for equipment where required.

*Battery Banks:*

- 4 x Rolls BERB/S12-240 AGM 215Ah Deep-cycle batteries (2015).
- 2 x service batteries in series for domestic 24V supply.



- 2 x engine-cranking/bow thruster batteries in series for starting 24V supply.
- 1 x 12V 44Ah Red Top generator starting battery.
- Batteries housed in custom aluminium battery cases to aft of engine room.

#### *Battery Chargers:*

- Mastervolt 24/30 charger (manufacturer overhaul in 2011).
- Automatic charge relay charging system.

#### *Alternators:*

- 2 x Balmar 60 Series 24V 70Ah engine-driven alternators (new at refit).

#### *Generator:*

- Fischer Panda generator 4.5 KVA, with run-in hours only (March 2015).
- New engine installed 2015.

#### *Shore Power:*

- Shore power connection.

#### *Other Electrical:*

- Electric horn.

---

## **Plumbing Systems**

---

#### *Fresh Water & Water Heating System:*

- Electric pressurized hot and cold water system.
- Hot water heating via 240V immersion or starboard engine cooling water circuit.

### *Bilge Pumps:*

- 3 x electric pumps (auto/manual switch at saloon aft bulkhead) located in forward, engine and aft bilges.
- Manual “Whale” pump located in galley bilge (with seacocks).

### *Grey & Black Water:*

- Blackwater monitoring gauge to aft heads.

## **Tankage**

---

- Tank monitoring for fresh water, black water and fuel.
- 2 x stainless steel 2” fuel fills, 1 x stainless steel 1-1/2” water fill.
- Stainless steel waste suction fitting.

### *Fuel:*

- Total capacity of approx. 2500 litres/c.550 Imp. Gall. in three tanks.
- Forward tank located centrally beneath engine room floor, day tank abaft and aft tank beneath aft cabin double berth.
- Fuel gauges and transfer pumps at inner helm console.
- All tanks opened and cleaned at refit.

### *Fresh water:*

- Total capacity of 1350 litres/c.295 Imp. Gall. in GRP tank under galley floor.

### *Grey/Blackwater holding tanks:*

- Black water (with deck suction & macerator)

### *Gas:*

- Two gas bottles stored in vented gas locker under starboard aft deck seating.
- Gas detectors fitted to bilge and galley locker.
- Gas certificate supplied.

## Navigation Equipment

---

- Raymarine e127 Hybrid Touch screen colour multifunction display to lower helm (2015).
- Raymarine e125 Hybrid Touch screen colour multifunction display to upper helm (2015).
- Raymarine 24" closed digital radar scanner (2015).
- Raymarine i70 instrument displays x 2 (2015).
- Raymarine P70 Pilot Controllers to both helms (2015).
- Raymarine Evolution EV1 Attitude Heading Reference Sensor & ACU-400 autopilot actuator controls (2015).
- McMurdo Smartfind M10 AIs Class B Transponder (2015).
- Echomax Active X band radar target enhancer (2015).
- Steering compass to upper helm.

### *Communications equipment:*

- Simrad RS87 DSC VHF to both helms, & antenna.
- GME Accusat MT403 406MHz beacon - located at aft saloon bulkhead (2014).

## Domestic Equipment

---

### *Galley:*

- Large top-loading refrigerator fitted under countertop.
- Separate top-loading freezer fitted under countertop.
- Corian countertop with twin stainless steel sinks and mixer tap.
- Panasonic Dimension 4 combination microwave.

- Three-burner gas hob.
- Plentiful stowage in drawers & lockers.

#### *Heads/Showers:*

- 24V electric-flushing WCs.
- High quality mixer showers with electric shower tray pumps (with filters).

#### *Heating & Ventilation:*

- Eberspacher Hydronic M10 24V diesel-fired heating with programmable thermostats.
- Warm air outlets throughout boat with heated towel rails to heads.
- New Seaglaze hatches, window lights, frames and seals (during refit).

#### *Lighting:*

- 24V lighting throughout vessel.

## **Accommodation**

---

#### *Summary of Accommodation:*

- Varnished teak and holly sole throughout (re-dressed during refit).

#### *Windows/Hatches:*

- New Seaglaze hatches, window lights, frames and seals (during refit).

#### *Interior Finish and Trim:*

- Checked upholstery to saloon & smart blue striped fabric to dinette seating
- Corian countertops to galley.
- Headlinings renewed, dash surround re-trimmed and interior linings replaced in alcantara.

- Satin-varnished teak interior joinery to high standard throughout.
- Teak interior passageway doors and trim.

#### *Description of layout:*

Aft double master cabin with ensuite heads/shower, leading forwards and up to main saloon with inner helm forward. Stairs down to linear galley on starboard and dinette to port. Days heads/shower opposite forward galley and access further forward to twin cabin in bows.

#### *Saloon and wheelhouse:*

- Four-seater U-shaped sofa to port with teak table.
- KAB 411 adjustable suspension helm and navigator seats.
- Blue carpet, pale blue linings and white deckhead lining.
- LED lighting, and hatch access to engine space.

#### *Galley and dinette:*

- J-shaped dinette sofa to port with table (with folding leaf).
- Linear galley to port side (refitted and with new worktop).
- Plentiful light and opening overhead deck-hatches.

#### *Forward guest cabin:*

- Two single berths in vee layout – storage beneath (all fully re-trimmed and carpeted).
- Opening deck-hatch.
- Waterproof bulkhead door between galley and forward cabin.

#### *Day heads/shower:*

- Thermostatic shower, towel radiator, electric heads and basin with mixer taps.

- Opening deck hatch.
- White bulkheads with timber trim.

#### *Aft Owners cabin:*

- Centreline double berth with tank beneath.
- Sliding side windows and opening aft port-light.
- Generous storage in lockers, cupboards, wardrobe and hanging lockers.
- Access to ensuite heads/shower compartment.

#### *Aft heads/shower compartment:*

- Thermostatic shower, towel radiator, electric heads and basin with mixer taps.
- White bulkheads with timber trim.

## **Deck Equipment**

---

#### *General:*

- Aft seating area (built during refit) with blue cushions and beautiful gloss-varnished table.
- Teak decks (new), stainless steel pushpit, inner customs-type stainless handrails and new external stanchions and wire guardrails.
- Mahogany-capped rails to aft cockpit surround.
- Teak and stainless bathing platform aft, with swimming ladder and treadways to aft side decks.
- 24V Bosch motors driving pantograph marine wipers, with fresh-water powered screen-washers.
- Outer helm console with controls to port-side, navigators' seat to starboard.

#### *Anchoring & Mooring Equipment:*

- 24V bow windlass with deck controls and remote switch at inner helm.

- 30 kg bow anchor with 30m chain in bow locker.
- Six cylinder and two ball fenders, warps as required.

#### *Covers, Canvas & Cushions:*

- Aft canopy enclosure in navy canvas.

#### *Tender:*

- Unused inflatable tender.

#### *Safety equipment:*

- Viking 4-man liferaft in canister - fitted in foredeck cradle (being serviced 2015).
- 2 horseshoe lifebuoys and 2 liferings with Danbuoy.

#### *Fire-fighting equipment:*

- Manually-triggered fire suppression to engine bay.
- 5 new portable fire extinguishers.

---

## **Исключения**

При продаже яхты исключаются личные вещи владельца.

---

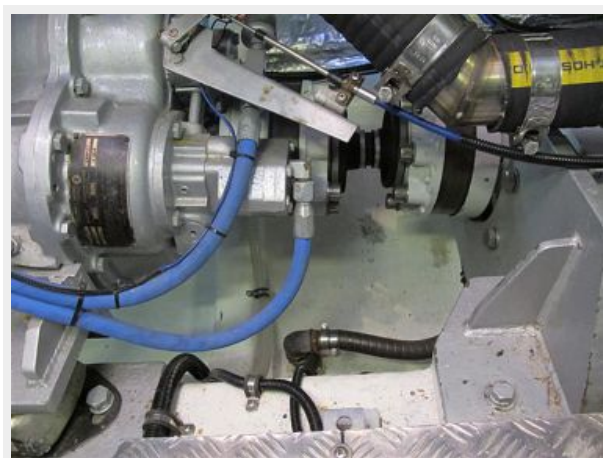
## **Отказ от ответственности**

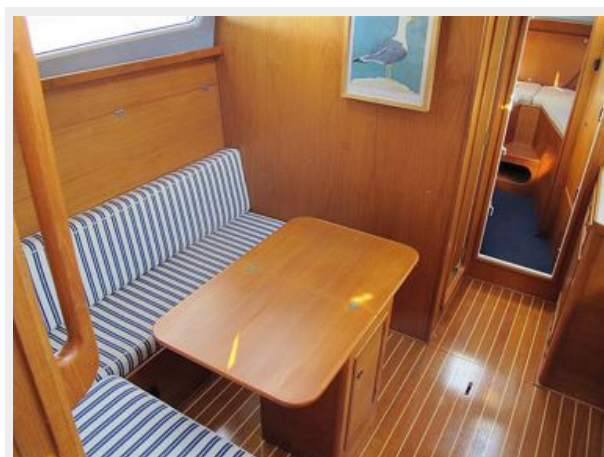
Компания предоставляет описание судна или яхты добросовестно, но не может гарантировать точность этой информации, а также не ручается за техническое состояние. Покупатель должен проинструктировать своих агентов или оценщиков исследовать представленную информацию более подробно, по собственному желанию. Продажа судна или яхты, изменение цены или снятие с продажи будет происходить без предварительного уведомления.

# ФОТОГРАФИИ

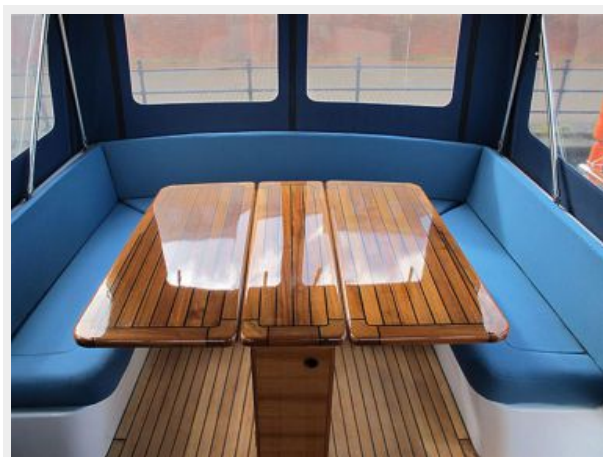
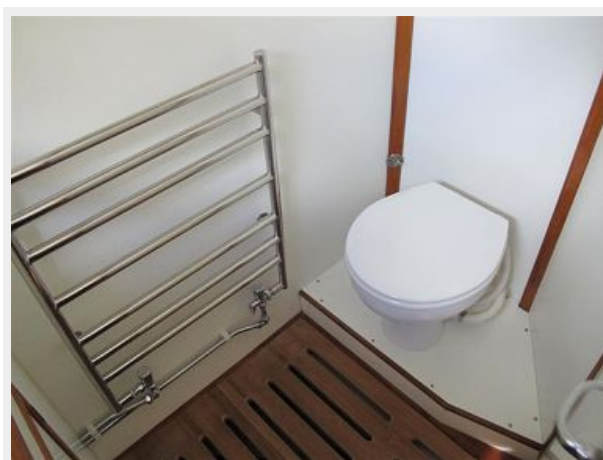
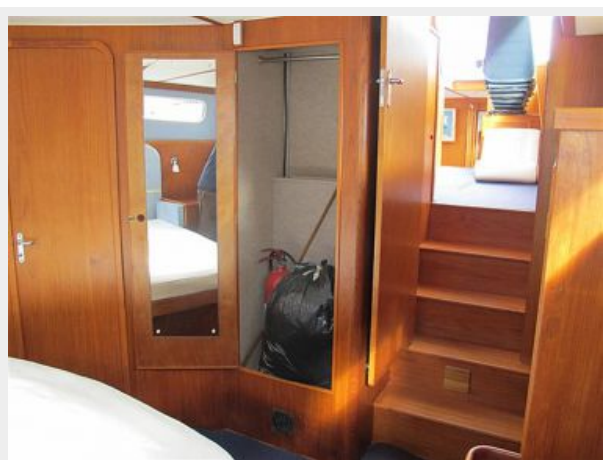




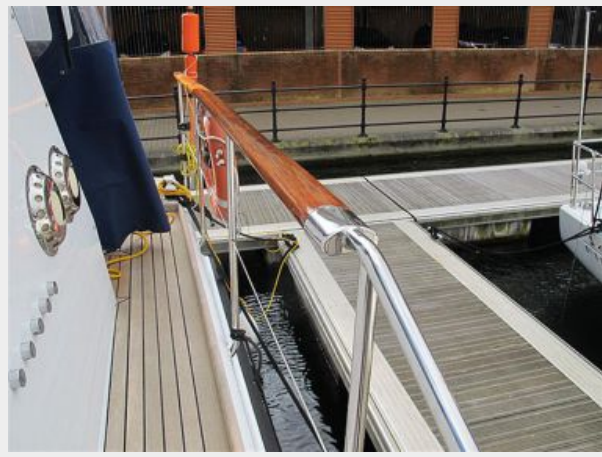


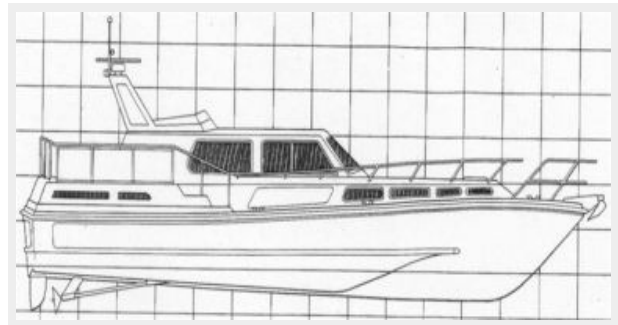
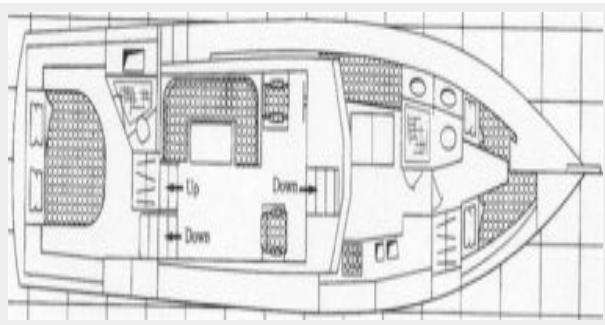
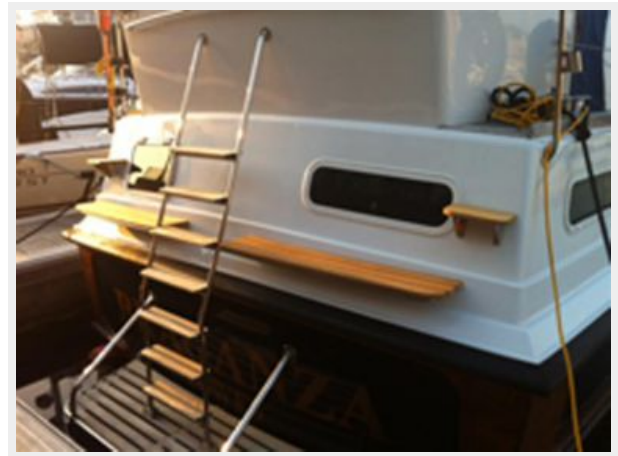












# КОНТАКТЫ

---

Андрей Шестаков (Andrey Shestakov) – ведущий яхтенный брокер отдела продаж яхт и судов компании Shestakov Yacht Sales Inc. Официальный представитель Shestakov Yacht Sales Inc. для русскоговорящих клиентов в центральном офисе компании в Майами/Форт Лодердейл/Флорида/США.

## Контактная информация

---

Email: [andrey@shestakovyachtsales.com](mailto:andrey@shestakovyachtsales.com)

Web: [shestakovyachtsales.com](http://shestakovyachtsales.com)

## Телефоны

---

Краснодарский край: **+7(918)465-66-44**

США, Майами, Флорида: **+1(954)274-4435**

## Время работы

---

Понедельник – Суббота: **9:00 - 21:00**  
EDT

Воскресенье: **Закрето**

## Адрес

---



Harbour Towne Marina, 850 NE 3rd St,  
STE 213, Dania, FL 33004