

4YOU — HEESEN YACHTS



Судостроитель: HEESEN YACHTS

Год постройки: 2009

Модель: Мега-яхта

Цена: **ЦЕНА ЯХТЫ ПО ЗАПРОСУ**

Местонахождение: Монако

Длина общая: 154' 3" (47.00m)

Ширина: 27' 11" (8.50m)

Мин. осадка: 8' 3" (2.50m)

Макс. осадка: 8' 3" (2.50m)

Крейс. скорость: 22 Kts. (25 MPH)

Макс. скорость: 24 Kts. (28 MPH)

Купить 4YOU — HEESEN YACHTS а также выбрать подходящую вам яхту из нашего каталога яхт вам поможет опытный яхтенный брокер Андрей Шестаков. На сегодняшний день компания Shestakov Yacht Sales Inc. имеет большое количество яхт в собственном списке продаж, а также тесно сотрудничает со всеми крупными яхтенными производителями по всему миру.

Для того чтобы купить яхту 4YOU — HEESEN YACHTS а также проконсультироваться по любому вопросу связанному с покупкой, продажей, чартером яхт позвоните по телефону **+7(918)465-66-44**.

ОГЛАВЛЕНИЕ

ОГЛАВЛЕНИЕ	2
ХАРАКТЕРИСТИКИ	3
Обзор	3
Основная информация	3
Размеры	3
Скорость, вместимость и масса	4
Размещение	4
Корпус и палуба	4
Информация о двигателе	4
ПОДРОБНОЕ ОПИСАНИЕ	5
Detailed Description	5
Исключения	11
Отказ от ответственности	11
ФОТОГРАФИИ	13
КОНТАКТЫ	20
Контактная информация	20
Телефоны	20
Время работы	20
Адрес	20

ХАРАКТЕРИСТИКИ

Обзор

A fine example of one of highly acclaimed Heesen 47m series, 4YOU has been immaculately maintained by her current Owner following extensive works last year which included an interior refresh and audio visual system upgrade. 4YOU is in turnkey condition following the completion of her ABS 5 year survey this Winter and additional improvement works.

With interior styling by the renowned Banneberg Design studio, 4YOU has a light and contemporary interior as well as bespoke artworks and a grand piano which add the finishing touches to her elegant interior.

4YOU provides well-appointed accommodation for up to 10 guests in five staterooms, including a full-beam master suite with its own private study, two VIP staterooms and two twin cabins – one of which can be converted into a double room if desired.

Expansive deck areas cater for a plethora of activities, with an open-air fitness centre, al fresco dining area and bar, and Jacuzzi on offer.

Powered by twin MTU 16V 4000 M90 diesel engines giving a max speed of 24 knots, 4YOU also has a transatlantic range of 3,400 miles and provides first-class comfort thanks to Zero Speed stabilizers.

Основная информация

Тип судна: Мега-яхта

Модельный год: 2009

Год постройки: 2009

Год обновления: 2014

Страна: Монако

Размеры

Длина общая: 154' 3" (47.00m)

Ширина: 27' 11" (8.50m)

Мин. осадка: 8' 3" (2.50m)

Макс. осадка: 8' 3" (2.50m)

Скорость, вместимость и масса

Крейс. скорость: 22 Kts. (25 MPH)

Дальность на крейсерской скорости:
3400

Макс. скорость: 24 Kts. (28 MPH)

Дальность на макс. скорости: 1728 Kts.

Водоизмещение: 584224.9943 Pounds

Чистый вес: 493 Pounds

Вместимость воды: 4877.672768128
Gallons

Объем топливного бака:
18580.805449472 Gallons

Расход топлива: 59.967055804 Gallons

Размещение

Всего кают: 5

Спальные места: 10

Каюты экипажа: 4

Спальных мест экипажа: 8

Корпус и палуба

Материал корпуса: Aluminum

Дизайнер корпуса: Heesen Yachts

Дизайнер экстерьера: Omega Architects

Дизайнер интерьера: Omega Architects

Информация о двигателе

Двигатели: 2

Производитель: MTU

Модель: MTU 16V 4000 M90

Тип топлива: Diesel

ПОДРОБНОЕ ОПИСАНИЕ

Detailed Description

MAIN CHARACTERISTICS

TYPE	Semi Displacement Motor Yacht
HULL	14647
BUILDER	Heesen Yachts
NAVAL ARCHITECT	Heesen Yachts
INTERIOR DESIGN	Omega Architects Bannenberg Designs Ltd
EXTERIOR DESIGN	Heesen Yachts; Omega Architects
YEAR	2009
REFIT	2013-2014
CLASSIFICATION	ABS A1 Yachting Service AMS Large Commercial Yacht Code LY2 / MCA
CONSTRUCTION	Aluminium hull & Superstructure
FLAG	Cayman Islands
ENGINES	2 x MTU 16V 4000 M90
GT	493 tons
DISPLACEMENT	265 tons / 584,000 lbs
DIMENSIONS	
LOA	47.00m / 154'2"
BEAM	8.50m / 29'6"
DRAFT MOULDED	1.875m / 8'2"
SPEED & RANGE UNDER POWER	
MAXIMUM SPEED	24 knots
CRUISING SPEED	22 knots
FUEL CONSUMPTION	227 litres per hour @ 12 knots 425 litres per hour @ 15knots 750 litres per hour @ 18 knots 1,050 litres per hour @ 20 knots 1,350 litres per hour @ 24 knots
RANGE	3,400 nm @ 12 knots 2,100 nm @ 22 knots / 1950 rpm 1,728 nm @ 24 knots / 2100 rpm

CAPACITIES

ACCOMMODATION	10 x Guests in 5 cabins
CREW	8 x Crew in 4 cabins
FUEL	70,336 litres / 18,580 US gallons
FRESH WATER	18,464 litres / 4,877 US gallons
GREY / BLACK WATER	5,907 litres / 1,560 US gallons

ACCOMODATION

She accommodates 10 guests in 5 staterooms.

The crew quarters can accommodate 9 crew in 4 cabins: 3 cabins forward and the Captain's cabin on the bridge deck.

MAIN DECK

Full width master suite with mini bar and en-suite shower / Steam Shower and bathroom. En-suite study /lounge and en-suite dressing room.

LOWER DECK

Four additional guest staterooms are located on the lower deck. The two VIP staterooms feature en-suite bathrooms with oversized showers. The two twin cabins also convert to doubles featuring en-suite bathrooms that are both large and modern.

SKYLOUNGE

The sky lounge features state of the art entertainment equipment, wet bar and baby grand piano. Large, plush couches and armchairs in the sky lounge offer ample sitting room for guests to unwind after a long day.

WALKTHROUGH

Guests arriving on the main deck aft are welcomed into the vast main saloon, passing first through an art-embellished lobby. This leads on into a social area furnished with coffee tables, armchairs and poufs where an eight-seater table, custom made from American walnut and topped with leather, is inlaid with intricate patterns of matt silver. The room's soft colour palette focuses on tones of beige and taupe set against the pale background of a creamy silk carpet, while the use of semi-gloss varnish also contributes to the relaxed and cool atmosphere.

Guests can also enjoy the second saloon on the upper deck where a brightly lit sky lounge offers three comfortable sofas and a choice of poufs that can also serve as coffee tables. Here guests can enjoy live music from a baby-grand piano that dominates the aft portion of the room, while the plasma screen is hidden by a unique piece of art deco-inspired art made by Dutch glass maker Glass Déco. This combines several panels of glass, delicately coloured in pale blue and light gold, to create a marine scene.

A further example of inlaid stainless steel can be seen in the doors of a dark wood cabinet. An elegant full-service bar topped with American walnut and white Carrera marble is positioned aft, adjacent to the sliding doors that give access to the aft portion of the bridge deck, where the primary function is open air dining.

The Sundeck deck offers an open-air fitness centre and a spa pool area that can be fully covered by an awning supported by carbon fibre retractable pillars. Eight guests can be accommodated on the lower deck in four cabins, of which two are twins and two are VIP doubles. Located forward on the main deck, the master suite is entered through the owner's office and leads on through a pair of walk-in wardrobes to the master bedroom, which occupies the yacht's full beam.

MECHANICAL EQUIPMENT

ENGINES	2 x MTU 16V 4000 M90 Diesel 3,648HP
ENGINE HOURS	Port: 3,250hrs/ Starboard: 3,250hrs April 2015
GEARBOX	2 x ZF 7550
ENGINE CONTROLS	MTU Blue vision, three control stands
SHAFTS	Stainless steel 431, 145mm diameter water lubricated
RUDDERS	2 x Stainless steel rudders with stainless steel 431 shafts
PROPELLERS	Schaffran five-blade, fixed pitch, 1,400 mm diameter
STEERING SYSTEM	Northrop Grumman Sperry Marine BV
STABILISERS	VT Naiad, type 720, at anchor, with 2 fins of approx. 3.5 m ² (37.5ft ²)
BOWTHRUSTER	HRP type 1001, 90 kW, hydraulic
GENERATORS	2 x John Deere 146 kW / 1500 RPM
GENERATOR HOURS	Port: 8,792hrs / Starboard: 8,763hrs. April 2015
ELECTRICITY	400V, 3 phase, 50 Hz Incoming volts: 170-520 Incoming Hz: 40-70 Output volts: 230/400 Output amps: 2 x 78 Output Hz: 50
SHORE POWER	ASEA, Model: AC 54-3, 2 x 50 kVA
BATTERIES	Emergency batteries: 24V, 400Amp
AIR CONDITIONING	Heinen & Hopman
WATERMAKERS	2 x HEM 25/1400/Modular
BILGE WATER FILTRATION	RWO SKIT/5-DEB
SEWAGE SYSTEM	Hamann 7532
FRESH WATER SYSTEM	HEM Aguana UV HEM Silver 20
LUBE OIL	772 litres / 7.5265 US gallons
WASTE OIL	1,000 litres / 264 US gallons
FUEL FILTRATION	Sea Westfalia OTL2-02-137

NAVIGATION EQUIPMENT

· 2 x Furuno Radar / ARPA FAR-2117

- Sperry Marine / Navipilot 4000 Autopilot
- Furuno RD-30 Wind indicator
- Plath / Venus Compass
- Furuno FE 700 Depth Sounder
- Furuno RD-30 Video Sounder
- SAAB RY SatNav
- SAAB RY GPS
- Sailor AIS
- Furuno NX-700 Navtex
- Transas Navi-Sailor 4000 ECS Plotter software
- Sperry C.Plath / Sperry Navigation x mk2 Gyrocompass
- Furuno Doppler speeding DS-80 speed indicator

COMMUNICATION EQUIPMENT

- Seatel 4006-VSAT Satcom
- Panasonic KX-PT 343 Telephone system
- 2 x Seatel 4004 Satelite TV
- Cisco WIFI Network system
- 2 x QNAP Servers
- Crestron Entertainment system
- Sailor C4900 VHF fixed
- Thrane & Thrane sailor RT5022 VHF DSC
- Jotron Tron TR20 VHF Handheld
- Panasonic integrated Intercom system
- Computer on bridge deck
- Computer in engine room
- HP Printer
- Kaleidescape

DECK EQUIPMENT

- Staalart Z3-17SED Anchor Windlass system
- Electric/Hydraulic Stern Boarding Gangway
- 2 x Staalart Capstans on Aft Deck
- 1 x Hydromar Davit (capacity 500kg)
- 2 x Anchors, chain dimensions 110m, 69mm, 18mm
- RCL 600A/12V Spotlights
- 1 x Jacuzzi Spa on Sun Deck / Marine Pool system for 8-10 people

ENTERTAINMENT EQUIPMENT

MAIN SALOON

- 1 x Sharp Aguos TV
- 1 x Pioneer Stereo
- 1 x Pioneer Blu-Ray
- 1 x Mini iPad Controller
- 1 x Dune Katrina HD
- 1 x Apple TV
- 1 x Kaleidescape
- 1 x Sky Box HD

MASTER CABIN

- 1 x Sharp Aguos TV
- 1 x Pioneer VSX 1018 AH
- 1 x Mini I Pad Controller
- 1 x Sky Box HD
- 1 x Kaleidescape
- 1 x Apple TV
- 1 x Dune HD
- 1 x Pioneer Blu-Ray

GUEST CABINS x 4

- 1 x Sharp Aguos TV
- 1 x Integra DTR 20.4
- 1 x Mini I Pad Controller
- 1 x Sky Box HD
- 1 x Kaleidescape
- 1 x Apple TV
- 1 x Dune HD
- 1 x Pioneer Blu-Ray

CREW BRIDGE

- 1 x Sharp Aguos TV
- 1 x Denon Multiplayer
- 1 x Pioneer DV-610
- 1 x Amplifier
- 1 x Pioneer Stereo

GALLEY & LAUNDRY

- GALLEY
- 1 x Miele microwave

- 2 x Foster refrigerators
- 2 x Foster freezers
- 1 x Miele fryer
- 2 x Miele dishwashers
- 1 x Brean trash compactor
- 1 x Miele Induction Wok Plate
- 3 x Miele 2 plate Induction hob
- 1 x Gaggenau oven

LAUNDRY

- 2 x Miele washers (PW 065 Plus)
- 2 x Miele dryers (PT 7136 Plus)

CREW

- 1 x Miele microwave
- 1 x Refrigerator (1/2 size)
- 1 x Miele dishwasher

SECURITY & SAFETY EQUIPMENT

SAFETY

- 3 x M.O.B Liferings
- 1 x Jotron Tron 40S EPRIB
- 6 x Hanson Ikaros Flares
- 4 x Zodiac Life rafts for 12 people
- Medical Equipment and supplies for 10 crew - Cat A

SECURITY

- Samsung CCTV System
- 3 x Monitors (Crew, Engine Room, Bridge)
- All Alarm Doors
- 7 x Cameras (3 x Main Deck, 1 x Tender Garage, 2xEngine Room, 1 x Mast)
- 2 x Ships Safes (Owners Cabin, Captain's Cabin)

FIRE FIGHTING

- 23 x Detectors in all locations
- 2 x Firefighting Suits
- 33 x Fire Extinguishers in All Decks/Tender Garage
- 6 x Seawater Firefighting Stations in All Decks
- 1 x Fixed CO² Fire System in Engine Room/Galley
- 1 x Novak in Engine Room

TENDERS & WATERSPORTS EQUIPMENT

TENDER

- 1 x 6m Castoldi Jet with Yanmar jet
- 1 x Zodiac Classic inflatable with Yamaha 9.9 HP outboard

WATERSPORT

- 1 x Yamaha Super jet stand up
- 4 x Fishing Penn reels + 4 x Penn rods
- 4 x Sets of Dive gear incl. various wetsuits
- 1 x Bauer dive compressor
- 12 x Sets of flippers, masks and snorkels 2 x Water skis
- 1 x Jet surf
- 2 x Wakeboards
- 3 x Cayago Seabob
- 2 x Yamaha VX cruiser Jet Skis

OTHER

- 1 x Cross Trainer
- 1 x Exercise bike

COMMENTS

Motor yacht 4YOU was built in 2009 by Heesen Yachts. The 47 metre yacht features exterior styling by Heesen Yachts and Omega Architects, with contemporary interior design by Omega Architects.

4YOU is the sister-ship of motor yacht SIROCCO, which launched in 2006, and CELESTIAL HOPE, which launched in 2008.

The main deck's generously sized saloon has a soft colour palette with tones of beige and taupe, offering a relaxing atmosphere. Guests can also relax in the upper deck's sky lounge where guests can enjoy live music from the piano, which dominates the aft portion of the room. A plasma TV is hidden by a unique piece of art made by Dutch glass maker Glass Deco.

Outside, guests can take advantage of the open-air fitness centre and spa pool area on the sundeck.

Motor yacht 4YOU can accommodate 10 guests in five cabins, including an owner's cabin, two VIP cabins and two twins. This semi displacement yacht can reach a top speed of 24 knots and has a range of 3,400 nautical miles.

Исключения

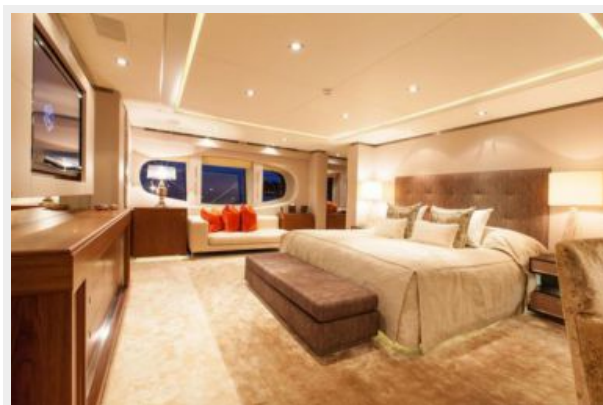
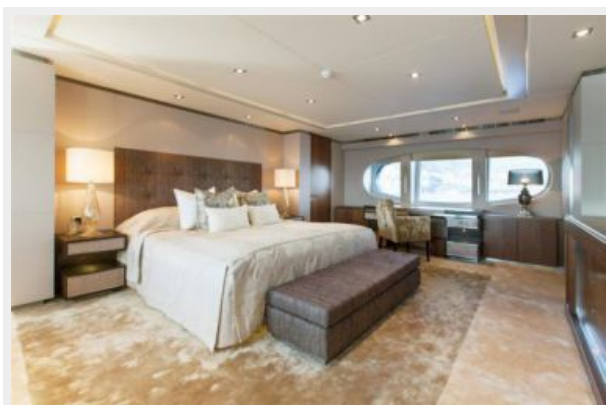
При продаже яхты исключаются личные вещи владельца.

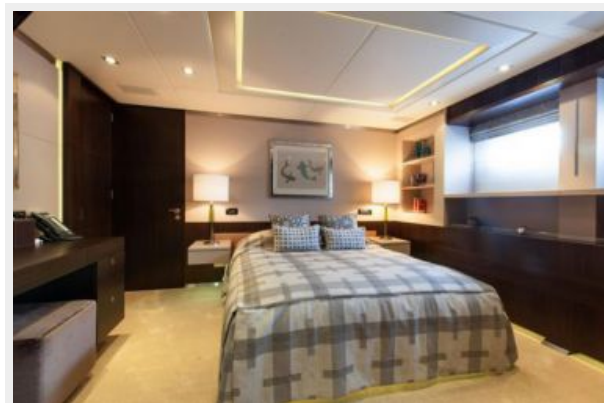
Отказ от ответственности

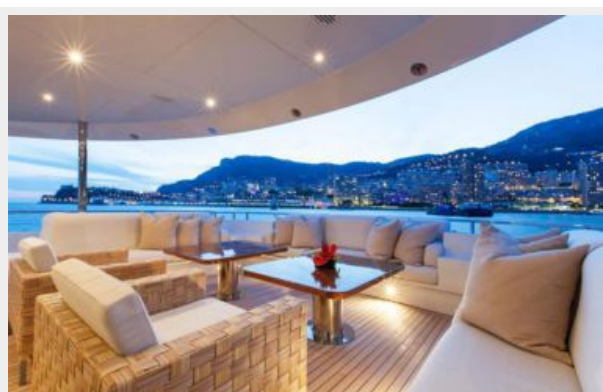
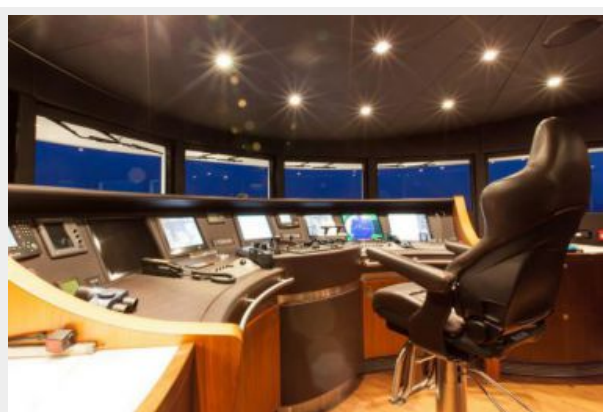
Компания предоставляет описание судна или яхты добросовестно, но не может гарантировать точность этой информации, а также не ручается за техническое состояние. Покупатель должен проинструктировать своих агентов или оценщиков исследовать представленную информацию более подробно, по собственному желанию. Продажа судна или яхты, изменение цены или снятие с продажи будет происходить без предварительного уведомления.

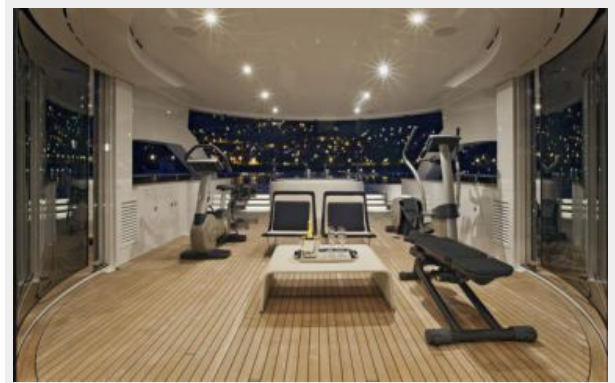
ФОТОГРАФИИ

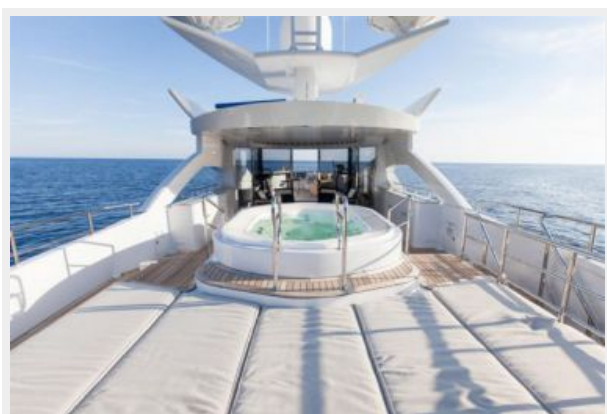
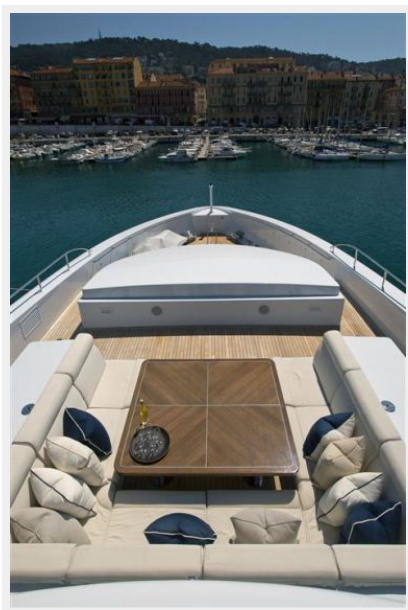


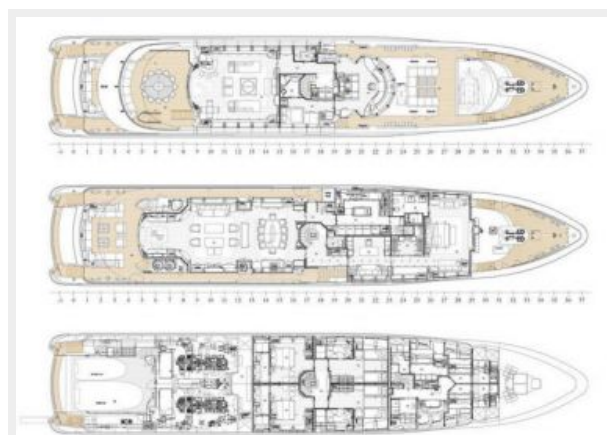












КОНТАКТЫ

Андрей Шестаков (Andrey Shestakov) – ведущий яхтенный брокер отдела продаж яхт и судов компании Shestakov Yacht Sales Inc. Официальный представитель Shestakov Yacht Sales Inc. для русскоговорящих клиентов в центральном офисе компании в Майами/Форт Лодердейл/Флорида/США.

Контактная информация

Email: andrey@shestakovyachtsales.com

Web: shestakovyachtsales.com

Телефоны

Краснодарский край: **+7(918)465-66-44**

США, Майами, Флорида: **+1(954)274-4435**

Время работы

Понедельник – Суббота: **9:00 - 21:00**
EDT

Воскресенье: **Закрито**

Адрес



Harbour Towne Marina, 850 NE 3rd St,
STE 213, Dania, FL 33004