

BLOOD SWEAT AND BEERS — CARVER



Builder: CARVER

Year Built: 1990

Model: Cruiser

Price: PRICE ON APPLICATION

Location: United States

LOA: 38' 0" (11.58m)

Beam: 14' 0" (4.27m)

Max Draft: 3' 4" (1.02m)

Cruise Speed: 15 Kts. (17 MPH)

Max Speed: 24 Kts. (28 MPH)

Our experienced yacht broker, Andrey Shestakov, will help you choose and buy a yacht that best suits your needs **Blood Sweat and Beers — CARVER** from our catalogue. Presently, at Shestakov Yacht Sales Inc., we have a wide variety of yachts available on our sale's list. We also work in close contact with all the big yacht manufacturers from all over the world.

If you would like to buy a yacht **Blood Sweat and Beers — CARVER** or would like help answering any questions concerning purchasing, selling or chartering a yacht, please call **+1(954)274-4435**

TABLE OF CONTENTS

TABLE OF CONTENTS	2
SPECIFICATIONS	3
Overview	3
Basic Information	3
Dimensions	3
Speed, Capacities and Weight	3
Accommodations	4
Hull and Deck Information	4
Engine Information	4
DETAILED INFORMATION	5
Manufacturer Provided Description	5
Accommodations	5
Galley	5
Electronics	5
Inside Equipment	5
Electrical Equipment	6
Outside Equipment	6
Disclaimer	6
Exclusions	6
Disclaimer	6
PHOTOS	7
CONTACTS	14
Contact details	14
Telephones	14
Office hours	14
Address	14

SPECIFICATIONS

Overview

This popular Carver aft cabin provides comfort and classic elegance and the perfect elements for enjoying life on the water. She has two private staterooms, one with a double berth and the aft stateroom features a queen-size berth, hanging lockers and head compartment with private shower.

The forward stateroom offers private access to forward head, also with a separate shower. The salon has a convertible dinette and a comfortable L - shaped sofa with hide-a-bed to provide extra sleeping accommodations as well as generous seating for anytime entertaining.

The galley is well equipped with double sink, microwave oven, fridge, and teak parket floor.

The command bridge has seating for eight and great sight lines. The aft deck has a complete full-enclosure and ice maker for all weather entertaining and cruising enjoyment.

She is clean and well kept and ready for her new owner!

Basic Information

Category: Cruiser

Model Year: 1990

Year Built: 1990

Country: United States

Dimensions

LOA: 38' 0" (11.58m)

Beam: 14' 0" (4.27m)

Max Draft: 3' 4" (1.02m)

Speed, Capacities and Weight

Cruise Speed: 15 Kts. (17 MPH)

Max Speed: 24 Kts. (28 MPH)

Displacement: 22750 Pounds

Water Capacity: 91 Gallons

Holding Tank: 75 Gallons

Fuel Capacity: 280 Gallons

Accommodations

Total Cabins: 2

Sleeps: 6

Total Heads: 2

Hull and Deck Information

Hull Material: Fiberglass

Engine Information

Engines: 2

Manufacturer: Mercruiser

Model: 7.4L

Engine Type: Inboard

Fuel Type: Gas

DETAILED INFORMATION

Manufacturer Provided Description

Comfort and classic elegance provide the perfect elements for enjoying life on the water aboard the Carver 38 Aft Cabin Motor Yacht. Two private staterooms feature double berths and abundant storage. The aft stateroom has a convenient private head compartment with shower, while the forward guest room features private access to the second head compartment also with shower. A convertible dinette - lounge and L-shaped sofa provide additional sleeping accommodations as well as seating for daytime entertaining. The command bridge features a slide - swivel pilot seat and ample seating for eight.

Accommodations

- Sleep 6 comfortably
- Fully equipped Galley
- Two heads both w/ separate stall showers
- Large Salon

Galley

- Full size refrigerator/freezer
- Microwave Oven
- Stove
- Double sink
- Oven

Electronics

Depthsounder Compass GPS VHF

Inside Equipment

Oven Heating Electric bilge pump Battery charger Hot water Refrigerator Microwave oven Air conditioning Marine head

Electrical Equipment

Generator Shore power inlet

Outside Equipment

Swimming ladder Electric windlass

Disclaimer

While we attempt to display current and accurate data, this listing may not reflect the most recent transactions or may contain occasional data entry errors. Selling agent makes no warranties, express or implied, regarding the content or availability of the products described herein. All inventory listed is subject to availability and prior sale. Please consult selling agent for details. Prices are quoted for the USA only and may not include transportation, taxes, or other applicable charges. Photographs may be representative only and may vary somewhat from the actual items offered for sale. We will not be responsible for inaccurate data obtained from our site. Please check with your local dealer to ensure that you have the latest information available. Information on this web site could include technical inaccuracies or typographical errors. Changes may be periodically made to the information or the products herein. Questions or comments regarding these policies may be directed to website hosting agent.

Exclusions

Owner's personal belongings.

Disclaimer

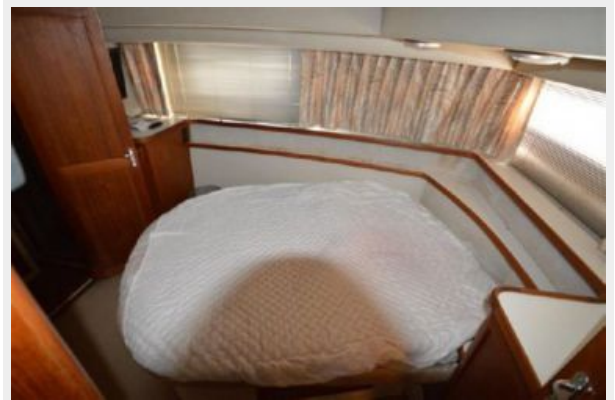
The Company offers the details of this vessel or yacht in good faith but cannot guarantee or warrant the accuracy of this information nor warrant the condition of the vessel. A buyer should instruct his representatives, agents, or his surveyors, to investigate such details as the buyer desires validated. This vessel or yacht is offered subject to prior sale, price change, or withdrawal without notice.

PHOTOS

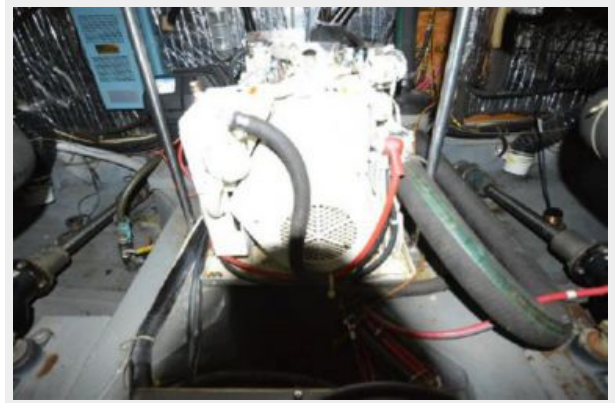














CONTACTS

Andrey Shestakov, leading yacht broker of the sales department of Shestakov Yacht Sales Inc. Shestakov Yacht Sales Inc., the official representative of the Miami/Fort Lauderdale FL headquarters.

Contact details

Email: andrey@shestakovyachtsales.com

Web: shestakovyachtsales.com/en/

Telephones

USA: +1(954)274-4435

Office hours

Monday – Saturday: **9:00 - 21:00** EDT

Sunday: **closed**

Address



Harbour Towne Marina, 850 NE 3rd St,
STE 213, Dania, FL 33004