

92' PARAGON MOTOR YACHT 92-09 — PARAGON MOTOR YACHTS



Судостроитель:

PARAGON MOTOR YACHTS

Год постройки: 2015

Модель: Моторная яхта

Цена: ЦЕНА ЯХТЫ ПО ЗАПРОСУ

Местонахождение: United States

Длина общая: 92' 3" (28.12m)

Ширина: 21' 7" (6.58m)

Мин. осадка: 5' 11" (1.80m)

Крейс. скорость: 14 Kts. (16 MPH)

Макс. скорость: 18 Kts. (21 MPH)

Купить 92' Paragon Motor Yacht 92-09 — PARAGON MOTOR YACHTS а также выбрать подходящую вам яхту из нашего каталога яхт вам поможет опытный яхтенный брокер Андрей Шестаков. На сегодняшний день компания Shestakov Yacht Sales Inc. имеет большое количество яхт в собственном списке продаж, а также тесно сотрудничает со всеми крупными яхтенными производителями по всему миру.

Для того чтобы купить яхту 92' Paragon Motor Yacht 92-09 — PARAGON MOTOR YACHTS а также проконсультироваться по любому вопросу связанному с покупкой, продажей, чартером яхт позвоните по телефону **+7(918)465-66-44**.

ОГЛАВЛЕНИЕ

ОГЛАВЛЕНИЕ	2
ХАРАКТЕРИСТИКИ	5
Обзор	5
Основная информация	5
Размеры	5
Скорость, вместимость и масса	6
Размещение	6
Корпус и палуба	6
Информация о двигателе	6
ПОДРОБНОЕ ОПИСАНИЕ	7
Hull Design and Construction	7
Superstructure and Deck	7
Main Engine Propulsion and Steering System	7
Engine Room & Bilges	8
Electrical Equipment	9
Main Deck Exterior	10
Aft Deck	11
Swim Platform and Cockpit	12
Pilot House	12
Galley	13
Salon	13
Day Head	13
Forward VIP Stateroom / Head	14
Port Guest Stateroom / Head	14
Starboard Guest Stateroom / Head	15
Owners Stateroom / Head	15
Captains Cabin / Head	16
Crew Cabin / Head	17

Crew Mess	17
Fly Bridge / Boat Deck	18
Disclaimer	18
Исключения	18
Отказ от ответственности	18
ФОТОГРАФИИ	20
Side Profile	20
Salon	20
Flybridge Bar	20
Aft Deck	20
Flybridge Dinette	20
Flybridge Looking Aft	20
Flybridge Looking Forward	21
Galley 1	21
Galley 2	21
Master 1	21
Master Head	21
Forward VIP	21
Forward VIP Head	22
Midship VIP	22
Mezzanine Seating	22
Captains Quarters	22
Starboard Bunk Room	23
Pilothouse Helm	23
Transom Door Details	23
Pilothouse Settee	23
General Arrangement	24
Engine Room 2	24
КОНТАКТЫ	25

Контактная информация	25
Телефоны	25
Время работы	25
Адрес	25

ХАРАКТЕРИСТИКИ

Обзор

Our traditional “Newport Beach” house with an open bridge and “Bahamas Cockpit” combination makes for a great platform for long range cruising and/or island hopping and accommodations for four crew members.

Captain Testimonials: Experienced Paragon Motor Yacht Captains weigh in on the details that set Paragon apart from the competition.

“Just as the name suggests, Paragon designed and built a yacht that few others can even come close to in terms of perfection. With the strength, feel, and systems of a larger yacht, she provides her captain with great flexibility while cruising and unparalleled confidence at sea. Better yet, she does this all while encompassing the ease of maneuverability and operation that both a small crew and owner built her.” - Captain Heath Hackett, President, Captains Choice Yacht Management, Inc.

“Having been the Captain of the 92 Paragon Golden Spur for over three years I have come to appreciate many things about this well built yacht. The builder cut no corners in the high quality equipment, components, and materials used. She is extremely well thought out and designed by a knowledgeable yachtsman. The engine room is a captains dream as far as layout and equipment incredibly quiet she is due to the excellent vibration isolation and sound deadening from the engines and equipment. She is also a very good sea boat with an extremely comfortable slow roll underway and at anchor. Great fuel capacity gives her terrific range. Maneuverability is a breeze with the props spaced farther apart.” - Captain Kevin Morgan

Основная информация

Тип судна: Моторная яхта

Подкатегория: Кубрик

Модельный год: 2015

Год постройки: 2015

Страна: United States

Размеры

Длина общая: 92' 3" (28.12m)

Длина по ватерлинии: 87' 5" (26.64m)

Ширина: 21' 7" (6.58m)

Мин. осадка: 5' 11" (1.80m)

Скорость, вместимость и масса

Крейс. скорость: 14 Kts. (16 MPH)

Дальность на крейсерской скорости:
1500

Макс. скорость: 18 Kts. (21 MPH)

Водоизмещение: 200000 Pounds

Чистый вес: 90 Pounds

Вместимость воды: 900 Gallons

Вместимость сточного бака: 500 Gallons **Объем топливного бака:** 3000 Gallons

Размещение

Всего кают: 4

Спальные места: 9

Всего ком. состава: 7

Каюта капитана: Да

Койки экипажа: 2

Корпус и палуба

Материал корпуса: Fiberglass

Дизайнер экстерьера: Scott Robinson

Дизайнер интерьера: Paragon Design
Team

Информация о двигателе

Двигатели: 2

Производитель: MAN

Модель: V-8

Тип топлива: Diesel

ПОДРОБНОЕ ОПИСАНИЕ

Hull Design and Construction

- Full planing hull, 13.5 degree deadrise at transom, generous flair at bow sections, integral swim platform
- One piece hull, combining hand lay up FRP and vacuum infusion utilizing Bidirectional, and Uni-directional materials
- Solid FRP below the water line with (4) layers of Vinylester resin laminates for maximum osmosis protection
- “Interlux” “Gel-shield” is applied to add osmosis protection during build time and after
- Full length hull girders of high density foam core and Bi & Uni-directional materials
- Exterior hull finish in high gloss white cook gel coat with Vinylester skin coats below water line
- Smooth finish on all bilge areas
- Engine girders are epoxy laminated vertical grain plys

Superstructure and Deck

- Hand laminated FRP utilizing Bi & Uni-directional, Knytech & Cotech w/Divinycell sandwich, high quality resin and vacuum bagging, Corecell core per plan
- Proper high compression cores as required for hardware mounting • Four main (watertight) bulkheads padded and cored with appropriate sandwich materials
- Sylomer floating floor system (per plan) with sound absorption and insulation
- Sylomer floating bulkheads (per plan)

Main Engine Propulsion and Steering System

- Twin MAN V-8 1200 bhp diesel engines with ZF #665a electronic marine reduction gears using a Sea Torque enclosed shaft system and torsional coupling vibration dampening system
- Engines mounted on “Rubber Design” soft vibration dampening mounts, engine installation shall be approved by the engine manufacturer, during installation and at sea trials
- American built #316 stainless steel exhaust risers, connecting to custom spray nozzles and premium super 60 silencers & underwater exhausts, all built by Marine Exhaust systems

- Aquamet #22 or equivalent (3") propeller shafts in conjunction with "Sea Torque" control system
- Water cooled exhaust system with 6" bypass hose and tubes aft
- Dual Racor 75/1000 fuel filters/water separators with vacuum gauges for each engine
- RCI fuel purifiers (RCM 800) for each engine installed in line before Racors with water sensor kits for both main engines and gen sets (1 RCI services 3 gen sets)
- Bronze "V" struts and "I" struts (per "Sea Torque" plan)
- "Tides" dripless rudder shafts
- Glendenning: model 2003 (4) electronic engine controls at fly bridge and pilothouse and (2) remote control for aft deck, bow trunk and pilothouse
- Dualhydraulic power assisted steering system
- Two 4" dia. Posts S.S. foil section streamlined rudders
- Engine room start/stop panels with gauges
- Visual and audio alarms for engine systems at pilothouse

Engine Room & Bilges

- Access through "Freeman" water tight door with viewing port
- Wesmar hydraulic RS 4800 system, main engine driven, 60 hp 16" dual prop vortex bow and stern thrusters, 16 sq. foot stabilizers, Maxwell 4500 lb. Anchor windlass
- Climate control using (1) 7,000 btu air condition unit
- S.S. welded & polished engine beds
- Aluminum (marine grade 6mm) fuel tanks with proper sight gages, and accessible 20" inspection plates
- (6) 24 vdc heavy duty bilge pumps w/ Ultra-switches
- High bilge water alarm system
- Full flow S.S. ball valves for all piping systems
- Reverso oil change system for main engines and generators
- 60 gallon per minute emergency bilge pump system

- Fire hose pump system with hose at fwd deck and aft deck
- Fresh water hose and nozzle in engine room
- Delta “T” positive pressure engine room air intake moisture eliminators to minimize water ingestion w/ fire dampers
- (1) 30 gallon and (1) 40 gallon hot water heater
- Fresh water valves at each bilge for wash down
- (2) 125 vac Headhunter fresh water system pumps with filters
- Central drain system for upper and lower deck drains, sinks, etc. to minimize thru hull fittings
- 250 gallon holding tank with deck fitting for pump out and two macerator pumps for overboard discharge (1) 110 vac pump & (1) 24 vdc
- 110 vac florescent lighting in engine room
- Marine grade bronze sea cocks for all thru hull fittings, bonded to bonding system - use stainless steel thru hulls above water line
- “Whale” high output manual bilge pump
- Automatic fire extinguishing system with automatic engine shut down

Electrical Equipment

- LED interior overhead lighting throughout interior
- (3) custom Panda 25 kw diesel generator with exhaust silencers, sound shield & custom gas/water separators
- (4) “Odyssey” PC 1700 drycell batteries for main engine and generator start (2 ea. Engine)
- (2) “Odyssey” PC 1200 drycell batteries for 24 vdc to 12 vdc converter back up batteries
- (16) “Life Line” 6 volt batteries for ships 24 volt dc service system
- (2) “Xantrex” 4kw/120 amp inverter/chargers
- Charles 24 volt battery charger for main engine batteries
- Charles 24 volt back up battery charger for service batteries

- (2) Newmar 24v to 12v converters (per plan)
- (2) 75 amp (engine alternators) for charging engine start batteries
- (2) 120 amp (large frame engine alternators) for charging ships service batteries
- (2) ASEA frequency converters
- (2) 100 amp Marinco shore power 125/250 vac connections port and stbd aft on Glendenning cable masters
- (2) 100' 125/250 amp shore power cords on Glendenning cable masters
- (1) 100 amp Marinco shore power 125/250 vac connection fwd stbd trunk
- AC & DC back lit distribution/circuit breaker panels with digital amp & volt meters
- Shielded wiring for stereo/TV speaker systems
- Color coded high quality shielded co-ax with proper crimp on connectors for TV's and misc.
- electrolysis and bonding system with copper strapping connected to (2) zinc plates @ transom
- Newmar ground shoe for nav. Equipment ground
- Ac duplex receptacles through-out with GFI protection in dedicated areas
- "BEP" vapor proof battery selector switches
- "Exalto" heavy duty variable speed windshield wiper system
- International navigation lights
- (2) "ACR" high intensity spot lights with single station controls

Main Deck Exterior

- Maxwell 4500 lb. Hydraulic windlass with (2) station controls
- (1) 250 lb. SS bow anchor , 200' x 5/8" high test chain • Teak decking throughout
- All exterior stainless steel 316 lb grade with welds ground smooth & highly polished
- Seating area @ bow with removable table and filler piece for making into large sunpad lounge
- Large storage lockers port & stbd @ bow area (trunks)
- Central fuel tank fills port & stbd

- Central water tank fills port & stbd
- Port side holding tank pump out connection
- Stbd side new oil fill
- Cambered decks w/ outboard drain channels
- Water tight fwd deck hatch, access to anchor well. "Freeman hatch"
- Fwd deck hatch, & ventilation/escape hatch for fwd guest stateroom "Freeman hatch"
- Fresh water & salt water wash down hook up @ bow area
- Dock side city water hook up at bow with quick release fittings
- Fire hose @ fwd stbd bow locker with 25' hose & fire hose nozzle
- Built-in, high pressure anchor chain wash system (fresh water)
- High polished s.s. hand rails
- S.S. hawse holes and bollards
- Port & stbd bulwark doors
- Imtra LED overhead lighting on dimmer controls for walk-arounds
- Varnished teak at overhead soffit at walk-arounds
- Deck safety lights at walk-arounds

Aft Deck

- Custom sliding Teak table and FRP settee
- Warping winches, port & stbd
- Port side integral stairway up to boat deck/fly bridge (Teak steps)
- FRP stbd side storage cabinet with refrigerator, Corian counter top
- Port side locker with engine/thruster controls
- Imtra LED overhead lighting on dimmer control • Vhf cabinet stbd side with 110 v.a.c. outlet
- Flood lights facing aft
- Stbd side bench seat

Swim Platform and Cockpit

- Teak decking with stairway port side, up to aft deck (teak steps)
- (3) extra-large pop-up cleats, port, center & stbd
- Water tight “Freeman” door, access to utility/crew & engine room
- S.S. hand rails @ stairs up to aft deck
- Water proof safety lights @ stairs up to aft deck
- Fresh water wash down outlet
- (6) “Underwater” flood lights, on transom underwater
- Oversized cleats and hawses for towing
- Stbd side cabinet with Corian counter top & sink
- Water-tight access hatch to lazzerette
- Teak cap rail

Pilot House

- Center helm station with two “Stidd” helm chairs, complete engine control and thruster controls instrumentation & alarms, Garmin navigation electronics (see list), “Night Watch” ships monitoring system
- Red overhead lights above dash for navigating
- Corian counter top with chart light and storage compartment
- A/C, heating and windshield defroster system
- Raised settee with table and chart storage locker
- Port and stbd water tight Freeman sliding doors
- AC & DC electrical panels • Stbd side stairway down to lower deck
- Stbd side stairway up to fly bridge
- Electric Hi-low wall divide

Galley

- Silestone counter tops
- Franke double sink with Grohe faucet
- (1) Sub-Zero full height refrigerator with two freezer drawers @ bottom section
- (1) Sub-Zero full height wine cooler with two refig. Drawers @ bottom section
- (1) Sub-Zero freezer drawers
- Fish&Paykel dishwasher
- GE "Profile" trash compactor
- GE microwave
- Wolf cook top and oven
- Soap dispenser
- Insinkerator stainless garbage disposal with counter top air switch
- Port side Freeman hinged Dutch-door from galley to side deck
- Large pot & pan storage compartment
- Accent lighting in window pockets

Salon

- Large Freeman hinged aft door with full height fixed glass window
- Extensive floor dampening system to reduce noise/vibration
- Stbd side wet bar area w/ sink, refrigerator, ice maker and lockers
- Stbd side, custom glass cabinet
- Stbd fwd private stairway down to master stateroom
- Entertainment center, (5) stereo speakers
- Accent lighting in window pockets

Day Head

- “Tecma” head
- Exhaust fan
- Small stbd side window
- 110v ac GFI protected duplex receptacle
- Silestone countertop , Silestone sink w/ Grohe faucet

Forward VIP Stateroom / Head

- Queen size island berth with drawers and with hinged access to storage underneath
- Port & stbd cedar lined hanging lockers
- Port outboard storage lockers
- “Freeman” escape/ventilation hatch w/ “OceanAir” screens
- (2) wall mounted reading lights
- Head with port light, Silestone countertop, Silestone flooring, Silestone sink, full enclosed Silestone shower and teak grate floor, louvered lockers, & “Tecma” head
- Grohe faucets and shower controls
- 110v ac duplex receptacles (GFI type in head)
- Overhead exhaust fan in head
- Accent lighting (per plan)

Port Guest Stateroom / Head

- Queen size island berth with drawers and with hinged access to storage underneath
- Night stands with drawer
- Floating floor system
- Cedar lined hanging locker
- (2) wall mounted reading lights
- One largenon-opening port light @ port side • Head with port light, Silestone countertop, Silestone flooring, Silestone sink, full enclosed Silestone shower and teak grate floor, louvered

lockers, & “Tecma” head

- Grohe faucets and shower controls
- 110v ac duplex receptacles (GFI type in head)
- Overhead exhaust fan in head
- Accent lighting (per plan)

Starboard Guest Stateroom / Head

- Two single bunks with drawers & storage under lower bunk
- Night stand with drawer
- Floating floor system
- Cedar lined hanging locker
- (1) wall mounted reading light
- Head with large non-opening port light, Silestone countertop, Silestone flooring, Silestone sink, full enclosed Silestone shower and teak grate floor, louvered lockers, & “Tecma” head
- Grohe faucets and shower controls
- 110v ac duplex receptacles (GFI type in head)
- Overhead exhaust fan in head
- Accent lighting (per plan)

Owners Stateroom / Head

- Accessed via private stairway from salon
- Floating floor system
- King size walk around berth with large drawers & storage underneath
- Night stands with drawer

- (2) large non-opening port light above dressers on port & stbd side
- Cedar lined hanging lockers on port & stbd side • (2) wall mounted reading lights
- Combination safe, port hanging locker
- Head with Silestone countertop, Silestone flooring, Silestone large sink, full enclosed Silestone shower with port light and teak grate floor, louvered lockers, & fully enclosed “Tecma” head
- Grohe faucets and shower controls
- 110v ac duplex receptacles (GFI type in head)
- Overhead exhaust fan in head
- GE washer/dryer in lobby
- Accent lighting (per plan)

Captains Cabin / Head

- Accessed from water tight “Freeman” cockpit door and port side deck water tight door
- Wide elevated berth with lockers, five drawers, and port light stbd side above berth
- Cedar lined hanging locker
- (1) opening port light above captains berth
- (2) wall mounted reading lights
- VHF radio with 110 vac outlets
- Head with silestone countertop, engineered wood flooring, Kohler sink, full enclosed FRP shower and teak grate floor, louvered lockers, & “Tecma” head
- Grohe faucets and shower controls
- 110v ac duplex receptacles (GFI type in head)
- Overhead exhaust fan in head
- Accent lighting (per plan)

Crew Cabin / Head

- Accessed from water tight “Freeman” cockpit door and port side deck water tight door
- Two single bunks with storage under lower bunk • (1) opening port light above upper bunk
- Night stand with drawers
- Cedar lined hanging locker
- (2) wall mounted reading lights
- Head with Silestone countertop, engineered wood flooring, Kohler sink, full enclosed FRP shower and teak grate floor, louvered lockers, & “Tecma” head
- Grohe faucets and shower controls
- 110v ac duplex receptacles (GFI type in head)
- Overhead exhaust fan in head
- Accent lighting (per plan)

Crew Mess

- Accessed from water tight “Freeman” cockpit door and port side deck water tight door
- A/C & D/C breaker panels
- Multiple displays for monitoring ships systems, Night Watch, Delta “T”, ASEA converter, and inverter remote displays
- Industrial hard rubber mat flooring
- Formica wall coverings
- Direct access from cockpit to engine room and lazzerette
- 110v ac receptacles (per plan)
- Crew amenities, Corian counter tops, s.s. sink with faucet, microwave, U-Line under counter refrigerator, lockers for dishes and misc.
- GE washer/dryer
- Whale manual bilge pump

Fly Bridge / Boat Deck

- Accessed via stairs from pilot house or aft deck
- Helm station with helm chair and dash for Nav. electronics • Large Carbon Fiber “U” settee with Corian table
- Large Carbon Fiber lounge for sun-pad
- Carbon Fiber fwd facing seating on stbd side
- Port side Carbon Fiber seat converts to fwd facing lounge
- FRP mast/tower with (2) Imtra lights
- Port side bar area with BBQ , sink, lockers, refrigerator, and ice maker
- Storage lockers, Corian counter tops, drawer & 110v GFI protected duplex receptacles, (1) sealed locker for (2) propane tanks all at bar area
- Aft port boat deck, integral stairs down to aft deck with S.S. framed sliding hatch/cover
- 2200 lb Nautical Structures hydraulic davit with hydraulic rotation
- S.S. 2" hand rails around boat deck
- Fresh water wash down outlet for outboard engine flush
- Decks cambered & drains plumbed to below water line

Disclaimer

The Company offers the details of this vessel in good faith but cannot guarantee or warrant the accuracy of this information nor warrant the condition of the vessel. A buyer should instruct his agents, or his surveyors, to investigate such details as the buyer desires validated. This vessel is offered subject to prior sale, price change, or withdrawal without notice.

Исключения

При продаже яхты исключаются личные вещи владельца.

Отказ от ответственности

Компания предоставляет описание судна или яхты добросовестно, но не может гарантировать точность этой информации, а также не ручается за техническое состояние. Покупатель должен проинструктировать своих агентов или оценщиков исследовать представленную информацию более подробно, по собственному желанию. Продажа судна или яхты, изменение цены или снятие с продажи будет происходить без предварительного уведомления.

ФОТОГРАФИИ

Side Profile



Salon



Aft Deck



Flybridge Bar



Flybridge Dinette



Flybridge Looking Aft



Flybridge Looking Forward



Galley 1



Galley 2



Master 1



Master Head



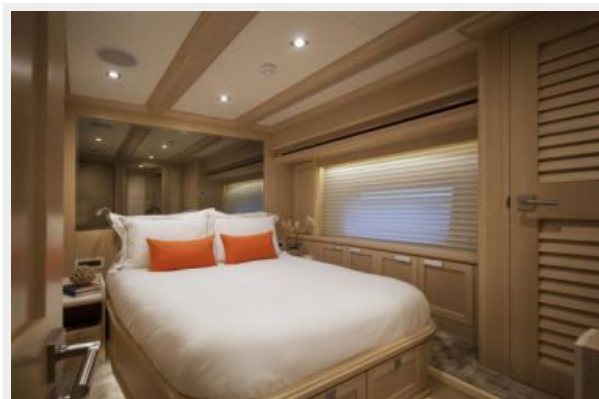
Forward VIP



Forward VIP Head



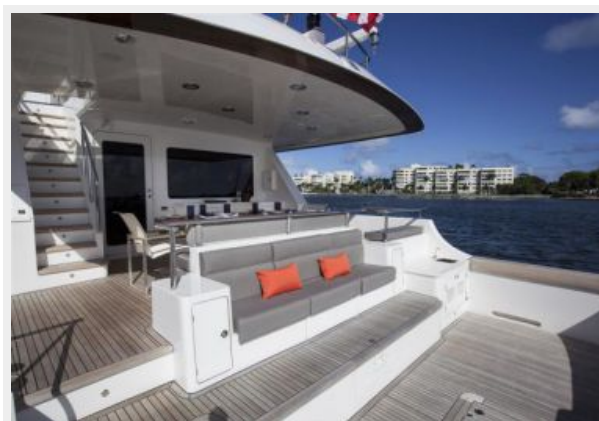
Midship VIP



Captains Quarters



Mezzanine Seating



Starboard Bunk Room



Pilothouse Helm



Transom Door Details



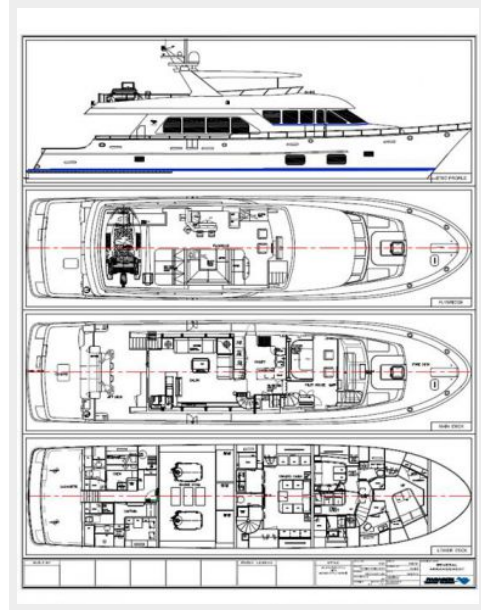
Pilothouse Settee



Engine Room 2



General Arrangement



КОНТАКТЫ

Андрей Шестаков (Andrey Shestakov) – ведущий яхтенный брокер отдела продаж яхт и судов компании Shestakov Yacht Sales Inc. Официальный представитель Shestakov Yacht Sales Inc. для русскоговорящих клиентов в центральном офисе компании в Майами/Форт Лодердейл/Флорида/США.

Контактная информация

Email: andrey@shestakovyachtsales.com

Web: shestakovyachtsales.com

Телефоны

Краснодарский край: **+7(918)465-66-44**

США, Майами, Флорида: **+1(954)274-4435**

Время работы

Понедельник – Суббота: **9:00 - 21:00**
EDT

Воскресенье: **Закрито**

Адрес



Harbour Towne Marina, 850 NE 3rd St,
STE 213, Dania, FL 33004