

## SOPHYE II — FAIRLINE



**Builder:** FAIRLINE

**Year Built:** 2014

**Model:** Motor Yacht

**Price:** PRICE ON APPLICATION

**Location:** United States

**LOA:** 79' 11" (24.36m)

**Beam:** 18' 8" (5.69m)

**Cruise Speed:** 25 Kts. (29 MPH)

**Max Speed:** 32 Kts. (37 MPH)

Our experienced yacht broker, Andrey Shestakov, will help you choose and buy a yacht that best suits your needs **SOPHYE II — FAIRLINE** from our catalogue. Presently, at Shestakov Yacht Sales Inc., we have a wide variety of yachts available on our sale's list. We also work in close contact with all the big yacht manufacturers from all over the world.

If you would like to buy a yacht **SOPHYE II — FAIRLINE** or would like help answering any questions concerning purchasing, selling or chartering a yacht, please call **+1(954)274-4435**

# TABLE OF CONTENTS

---

TABLE OF CONTENTS	2
SPECIFICATIONS	3
Overview	3
Basic Information	4
Dimensions	4
Speed, Capacities and Weight	4
Accommodations	5
Hull and Deck Information	5
Engine Information	5
PHOTOS	6
Shopye II	11
CONTACTS	13
Contact details	13
Telephones	13
Office hours	13
Address	13

# SPECIFICATIONS

---

## Overview

---

Due to its long standing popularity, it is a very rare occasion that we are able to offer a late model 78 Squadron Custom Yacht and so we are proud to present SOPHYE II to the market for the first time. Custom built for a knowledgeable yachtsman, this fully stabilized vessel is loaded with equipment and features commonly found on much larger yachts such as bow and stern hydraulic thrusters, water maker and a long list of extra equipment and custom touches such as the full size commercial refrigerator in the galley.

The well-proven Squadron 78 Custom is equipped for relaxing and entertaining on a grand scale.

The huge and commanding flybridge gives the first clue to this remarkable yacht sociable intentions,. The elegant floating seats surround the large teak feature table where secret lights in the table itself create a discreet, romantic ambience.

Poise and sophistication also reveal themselves whilst underway. The Squadron 78's design places heavy items like fuel over the centre of buoyancy, which gives it its legendary sea keeping properties, a pleasant sound and low vibration throughout.

Grand private staterooms combine light, space and air to stunning effect and as you move through the large, spacious entertaining areas you start to appreciate that behind the effortless nature of this yacht lies a wealth of well-considered features. In fact, it boasts the most extensive list of standard equipment in its sector.

SOPHYE is a very low hour vessel, turn key and fully serviced and maintained by our service center in the Miami area. Please call listing broker to make an appointment to inspect the vessel at your convenience.

### Manufacturer Provided Description

Everything we've learned in more than 40 years of building fine motor yachts is to be found in the breathtakingly elegant, award-winning Squadron 78 CUSTOM. From the well-proven hull to the smallest detail of cabinetry, we've drawn on lessons learned from the creation of over 11,000 Fairlines, in order to create a peerless luxury motor yacht. From design concept through to full-size mock-up, nothing has been left to chance, so that every inch of this boat fits a precise design purpose. The Squadron 78 embodies everything that, as an owner, you would expect in a luxury performance motor yacht ... as well as a great many things you probably wouldn't. Large, luminous entertaining areas; grand private staterooms that combine light, space and air to stunning effect; and everywhere, the dazzling interplay between the finest materials (hand-selected granite work surfaces, hand-matched burrs and exotic woods) and state-of-the-art design accents and features. In summary, our current Squadron flagship took three years to develop and countless thousands of man-hours to reach such a pinnacle of excellence ... and it

shows. Everywhere you look. As its name implies, a high level of customisation is a feature of this stunning yacht and clients can rely on the specialist advice, experience and exclusive services of our Yacht Division throughout the order and commissioning process.

## Basic Information

---

**Category:** Motor Yacht

**Sub Category:** Flybridge

**Model Year:** 2014

**Year Built:** 2014

**Country:** United States

**Vessel Top:** Bimini Top

**Fly Bridge:** Yes

**Cockpit:** Yes

## Dimensions

---

**LOA:** 79' 11" (24.36m)

**Beam:** 18' 8" (5.69m)

## Speed, Capacities and Weight

---

**Cruise Speed:** 25 Kts. (29 MPH)

**Cruise Speed RPM:** 1900 Kts.

**Cruise Speed Range:** 450

**Max Speed:** 32 Kts. (37 MPH)

**Max Speed RPM:** 2300 Kts.

**Max Speed Range:** 300 Kts.

**Displacement:** 70000 Pounds

**Water Capacity:** 301 Gallons

**Fuel Capacity:** 1557 Gallons

## Accommodations

Total Cabins: 4	Total Berths: 8
Sleeps: 10	Total Heads: 4
Captain Cabin: True	Crew Cabin: 2
Crew Berths: 2	Crew Sleeps: 3
Crew Heads: 1	

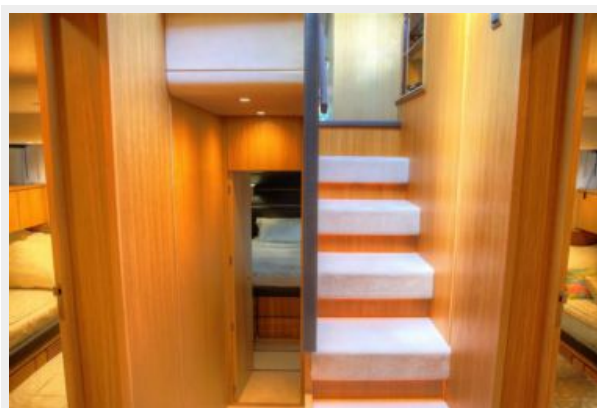
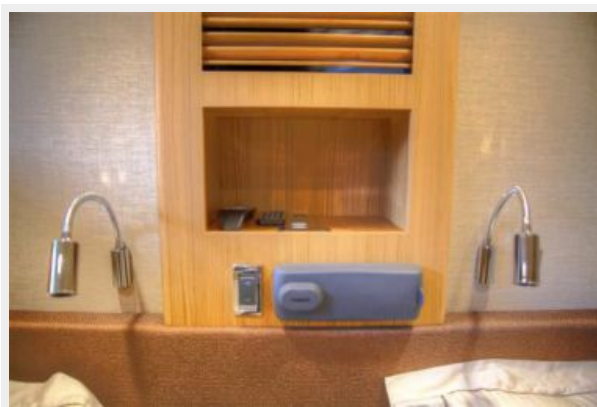
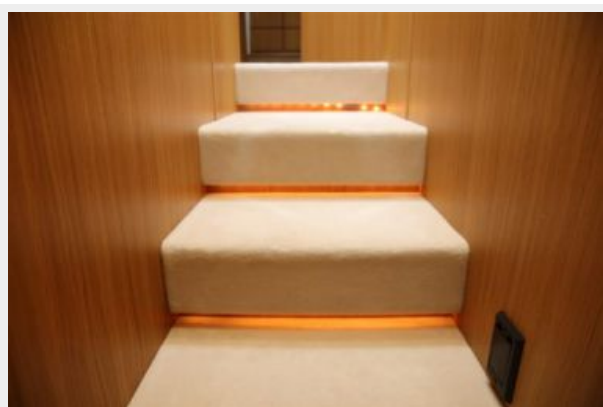
## Hull and Deck Information

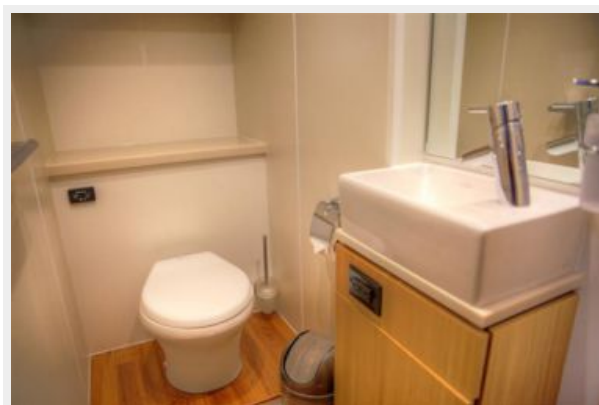
Hull Material: Fiberglass	Deck Material: Teak and Fiberglass
Hull Configuration: Modified Deep Vee	Hull Color: White
Hull Finish: Plastic	Hull Designer: Olesinsky

## Engine Information

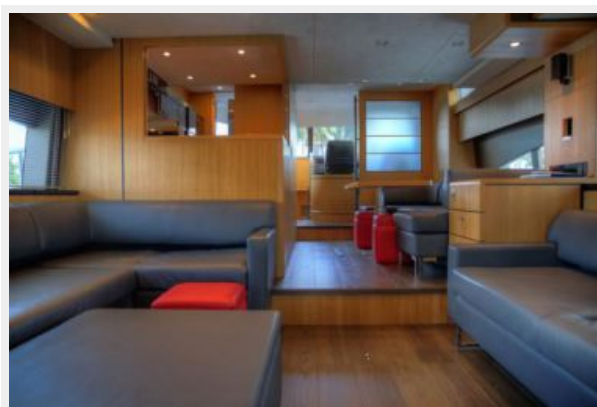
Engines: 2	Manufacturer: Caterpillar
Model: C32	Fuel Type: Diesel

# PHOTOS

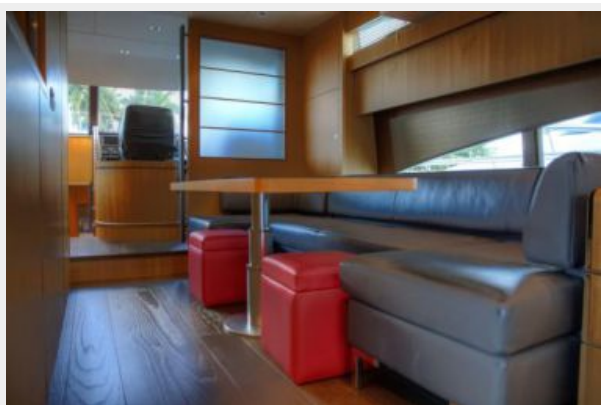






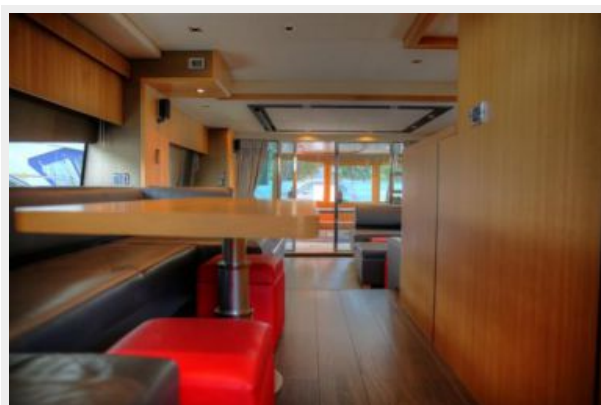
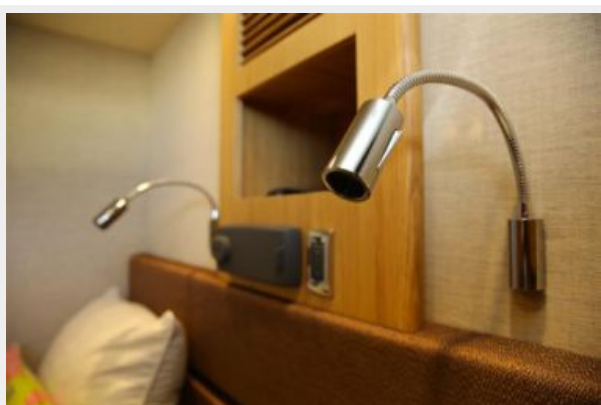
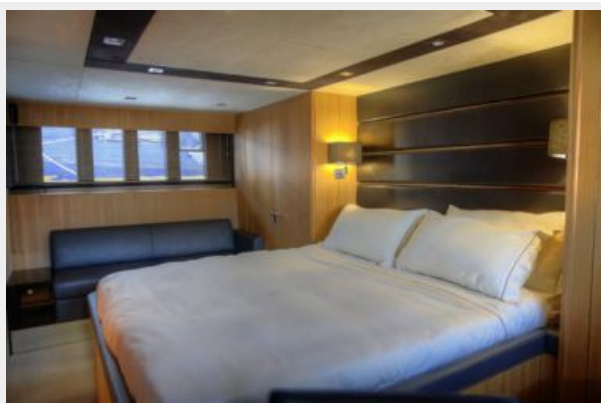












## Shopye II





# CONTACTS

---

Andrey Shestakov, leading yacht broker of the sales department of Shestakov Yacht Sales Inc. Shestakov Yacht Sales Inc., the official representative of the Miami/Fort Lauderdale FL headquarters.

## Contact details

---

Email:  
**andrey@shestakovyachtsales.com**

Web: [shestakovyachtsales.com/en/](http://shestakovyachtsales.com/en/)

## Telephones

---

USA: **+1(954)274-4435**

## Office hours

---

Monday – Saturday: **9:00 - 21:00 EDT**

Sunday: **closed**

## Address

---



Harbour Towne Marina, 850 NE 3rd St,  
STE 213, Dania, FL 33004