

# KAYTOO — PARAGON MOTOR YACHTS



**Builder:** PARAGON MOTOR YACHTS

**Year Built:** 2015

**Model:** Mega Yacht

**Price:** PRICE ON APPLICATION

**Location:** United States

**LOA:** 100' 3" (30.56m)

**Beam:** 21' 7" (6.58m)

**Min Draft:** 5' 11" (1.80m)

**Cruise Speed:** 15 Kts. (17 MPH)

**Max Speed:** 19 Kts. (22 MPH)

Our experienced yacht broker, Andrey Shestakov, will help you choose and buy a yacht that best suits your needs KAYTOO — PARAGON MOTOR YACHTS from our catalogue. Presently, at Shestakov Yacht Sales Inc., we have a wide variety of yachts available on our sale's list. We also work in close contact with all the big yacht manufacturers from all over the world.

If you would like to buy a yacht KAYTOO — PARAGON MOTOR YACHTS or would like help answering any questions concerning purchasing, selling or chartering a yacht, please call +1(954)274-4435

# TABLE OF CONTENTS

TABLE OF CONTENTS	2
SPECIFICATIONS	5
Overview	5
Basic Information	5
Dimensions	6
Speed, Capacities and Weight	6
Accommodations	6
Hull and Deck Information	6
Engine Information	6
DETAILED INFORMATION	7
Hull Design and Construction	7
Main Engine Propulsion and Steering System	7
Engine Room & Bilges	8
Superstructure and Deck	9
Equipment	9
Electrical	10
Boat Deck	11
Sky Bridge	11
Main Deck Exterior	12
Aft Deck	12
Owner's Stateroom and Head	13
Dining Lounge	14
Galley	14
Day Head	14
Salon	15
Pantry	15
Forward Stateroom and Head	15
Port Guest Stateroom and Head	16

Laundry / Tech Room	17
VIP Stateroom and Head	17
Captains Cabin and Head	17
Crew Cabin and Head	18
Aft Mess and Crew Area	18
Wheel House	19
Main Deck Dining Lounge	19
Swim Platform and Cockpit	19
Wheel House Interior	20
Tech Room	20
Interior Design	21
Remarks	21
Disclaimer	22
Exclusions	22
Disclaimer	22
PHOTOS	24
Sea Trials	24
Salon	24
Salon	24
Salon	24
Salon Game Table	24
Salon	24
Dining Lounge	25
Dining Lounge	25
Galley	25
Galley	25
Crew Hallway	25
Captain's Quarters	25
Crew Stateroom	26

Crew Mess	26
Hallway	26
Forward King Stateroom	26
SkyMaster Head	27
SkyMaster	27
Forward V-Berth Stateroom	27
Forward V-Berth Stateroom	27
Midships King Stateroom	27
Midships King Stateroom	27
Midships King Stateroom Head	28
Midships King Stateroom	28
Owner's Deck	28
Owner's Deck	28
Bahamas Cockpit	28
Aft Deck	28
Bow	29
Bow	29
Transom Door Detail	29
Sky Bridge	29
Sky View	29
Running	29
CONTACTS	31
Contact details	31
Telephones	31
Office hours	31
Address	31

---

# SPECIFICATIONS

---

## Overview

---

**Distributor's Demo Model now reduced to \$8,900,000 and seriously for sale! "KAYTOO" was nominated for the 2015 Superyacht Awards**

Paragon's "Bahamas Cockpit" design—a large tiered mezzanine and cockpit area aft of the main salon intended as a grand entertainment platform. The covered upper mezzanine includes a relaxing seating area with plenty of storage while the lower cockpit features all of the amenities wanted at hand while enjoying Bahamian waters including a barbecue, wet bar, ice chipper and built-in cooler.

Designed specifically to tow a large tender, the SkyMaster features integrated tow line stowage on the interior port and starboard sides of the cockpit. Another unique feature is the dedicated, USCG-compliant and RINA-certified, 300-gallon gasoline tank and pump designated for fueling the tender on extended excursions.

Built upon Paragon's proven hull platform that consistently yields excellent sea keeping. The SkyMaster incorporates the latest in vibration attenuation technology, has been carefully designed and engineered to ensure the utmost in silence, stability and performance which is a cornerstone of the Paragon Motor Yachts.

This yacht comfortably accommodates eight guests in three king staterooms, a fourth queen-size stateroom and an additional bunk, and includes accommodations for a captain and three additional crew members, all easily serviced by three full-sets of laundry machines.

"We are very proud of the new SkyMaster" says company founder and President Scott Robinson. "To say we are meticulous in our design process may be an understatement, but this collaboration with owners who are experienced boaters and are familiar with our process is proving to yield a fantastic result."

---

## Basic Information

---

**Category:** Mega Yacht

**Model Year:** 2015

**Year Built:** 2015

**Country:** United States

---

## Dimensions

---

**LOA:** 100' 3" (30.56m)

**LWL:** 85' 5" (26.03m)

**Beam:** 21' 7" (6.58m)

**Min Draft:** 5' 11" (1.80m)

---

## Speed, Capacities and Weight

---

**Cruise Speed:** 15 Kts. (17 MPH)

**Cruise Speed Range:** 1800

**Max Speed:** 19 Kts. (22 MPH)

**Displacement:** 200000 Pounds

**Gross Tonnage:** 97 Pounds

**Water Capacity:** 900 Gallons

**Holding Tank:** 290 Gallons

**Fuel Capacity:** 4000 Gallons

---

## Accommodations

---

**Total Cabins:** 4

**Sleeps:** 9

**Total Heads:** 7

**Captain Cabin:** True

**Crew Berths:** 2

---

## Hull and Deck Information

---

**Hull Material:** Fiberglass

**Exterior Designer:** Scott Robinson

**Interior Designer:** Paragon Design Team

---

## Engine Information

---

**Engines:** 2

**Manufacturer:** MAN

**Model:** V12

**Engine Type:** Inboard

**Fuel Type:** Diesel

---

# DETAILED INFORMATION

---

---

## Hull Design and Construction

---

- Full planing hull, 13.5 degree deadrise at transom, generous flair at bow sections, integral swim platform
- One piece hull, combining hand lay up FRP and vacuum bag utilizing Bi-directional, and Uni-directional materials
- Solid FRP below the water line with (4) layers of Vinylester resin laminates for maximum osmosis protection
- “Interlux” “Gel-shield” is applied to add osmosis protection during build time and after
- Full length hull girders of foam core and Bi & Uni-directional materials
- Exterior hull finish in high gloss white Cook gel coat with Vinylester skin coats below water line
- Smooth finish on all bilge areas
- Engine girders are epoxy laminated vertical grain plys

---

## Main Engine Propulsion and Steering System

---

- Twin MAN V-12-1550 hp diesel engines with ZF #2050a electronic marine reduction gears using a sea torque enclosed shaft system and torsional coupling vibration dampening system
- Engines mounted on vibration dampening mounts, engine installation shall be approved by the engine manufacturer, during installation and at sea trials • American built “Marine Exhaust Systems” #316 stainless steel epoxy coated exhaust risers, with S.S. Flex bellows connecting to custom spray nozzles and FRP super60 silencers, underwater exhaust, and 6” bypass exhaust.
- Power train & exhaust systems have been designed for smoothest and most quiet results possible
- Dual Racor 75/1000 fuel filters/water separators for each engine
- R.C.I. Fuel purifiers (RCM 800) for each engine installed in line before Racors with water sensor alarms
- Bronze “V” struts and “I” struts
- “Tides” dripless rudder shafts
- Glendenning: Model 2003, electronic engine controls @ Wheel House - center helm, port &

---

stbd fly bridge, remote control plug ins at aft deck, stbd bow trunk and dining lounge

- Dualhydraulic power assisted steering system
- Two 4" dia. Posts S.S. Foil section, streamlined rudders
- Engine room start/stop panels with gauges
- Visual and audio alarms for engine systems @ wheel house
- Sea Torque enclosed shafting system

## Engine Room & Bilges

---

- Climate control using air condition units totaling 17,000 BTU
- S.S. Welded & polished engine beds
- Aluminum (marine grade 6mm) fuel tanks with proper sight gages, and accessible 20" inspection plates
- (6) 24 VDC heavy duty bilge pumps w/ ultra switches
- High bilge water alarm system
- S.S. air compressor hook up with hose
- 125 Vac oil change system for main engines and generators
- 60 gallon per minute emergency bilge pump system
- Fire hose pump system with hose connection @ stbd bow trunk and stbd aft side deck locker
- Fresh water anchor washdown system @ bow anchor area
- Fresh water hose and nozzle in engine room
- Delta "T" positive pressure engine room air intake system to minimize water ingestion w/ fire flap and demisters • (1) 30 gallon and (1) 40 gallon hot water heater
- Central fresh water tank fills, port & stbd
- Dock side water pressure hook up at bow and stern
- (2) 125 Vac headhunter fresh water system pumps with filters
- Central drain system for upper and lower deck drains, sinks, etc. To minimize thru hull fittings
- 290 gallon holding tank with sewage treatment system, with deck fitting for pump out and two



macerator pumps for overboard discharge (1) 110 Vac pump & (1) 24 vdc.

- 110 Vac florescent lighting in engine room
- Marine grade bronze sea cocks for all thru hull fittings, bonded to bonding system
- “Whale” high output manual bilge pump

---

## Superstructure and Deck

---

- Hand laminated FRP utilizing Bi & Uni-directional material with core cell sandwich, and vacuum bagging
- Proper high compression cores as required for hardware mounting (per plan)
- Four main watertight bulkheads padded and cored with appropriate sandwich materials
- Sylomer floating floor system (per plan) with sound absorption and insulation
- Sylomer floating bulkheads (per plan)
- Composite flooring system utilizing Sylomar floating floor design
- Exterior teak decking throughout

---

## Equipment

---

- Ships hydraulic system by Wesmar, main engine driven, to run the following: 60 hp 16” dual prop vortex bow and stern thrusters, 16 square foot roll fin stabilizers, Maxwell 4500lb anchor windlass
- Maxwell #4500 hydraulic windlass with (3) station controls
- (1) 220 lb. S.S. polished Ultra anchor, 262’x 5/8” high test chain
- “Nautical Structures” 2200 lb. Hydraulic davit with hydraulic rotation • Aqua air, 18 ton chilled water air conditioning and heating system with variable speed drives and high voltage protection system
- Salt water washdown @ bow and stern
- Compressed air system for Buelle air horns with engine room air hose
- HRO systems reverse osmosis water maker (2800 G.P.D.) with fresh water flush system

- (1) Kenyon electric BBQ grill in cockpit stbd side
- Automatic fire extinguishing system with automatic engine shut down
- “Tecma” marine heads throughout

## Electrical

---

- LED interior overhead lighting throughout interior
- (3) Panda 25 kw diesel generator with exhaust silencers, sound shield & custom gas/water separators (with work space cover & sea rail)
- (4) “Odyssey” PC 1700 drycell batteries for main engine start (2 ea. Engine)
- (2) “Odyssey” PC 1200 drycell batteries for emergency 12vdc backup.
- (16) “Trojan” L-16 6 volt batteries for ships 24 volt dc service system
- (2) “Xantrex” 4kw/120 amp inverter/charger for charging ships battery system, interface for 8kw and house battery bank monitoring panel
- Charles 24 volt battery charger for main engine batteries
- Charles 24 volt battery charger for service batteries (back up charger)
- (2) Newmar 24v to 12v converters
- (2) 120 amp (engine alternators) for charging engine start batteries
- (2) 120 amp (large frame engine alternators) for charging ships service batteries
- (2) Asea (AC50Q-1) Shore Power Converter
- (1) Charles marine 100 amp a/b switch
- Two (100`) Marinco 100 amp shore power cords port & stbd aft on a Glendenning cable master
- (1) Marinco 100 amp shore power inlet fwd in trunk stbd side
- (1) Asea frequency conversion unit
- AC & DC back lit distribution/circuit breaker panels with digital amp & volt meters
- Electrolysis and bonding system with copper strapping connected to (2) zinc plates @ transom
- AC duplex receptacles through-out with GFI protection in dedicated areas • “Bep” vapor proof battery selector switches

- “Exalto” heavy duty variable speed windshield wiper system
- International navigation lights
- (2) “ACR” high intensity spot lights with single station controls
- “PBX” type phone/intercom system

---

## Boat Deck

---

- Stbd side storage locker
- Port side locker with propane bottle storage
- Aft port side boat deck, integral steps down to aft deck with S.S. framed sliding hatch/cover
- Teak decks at boat deck area
- 2200 lb Nautical Structures hydraulic davit with hydraulic rotation
- S.S. 2" hand rails around boat deck
- Fresh water washdown outlet for outboard engine flush
- Decks cambered & drains plumbed to insure no standing water

---

## Sky Bridge

---

- Carbon fiber furniture, (2) curved settees, (1) fwd facing settee with table, (1) aft facing settee with table
- Carbon Fiber main arch with hard top
- Remote control Engine-Control Station
- Companionway hatch from Flybridge to Wheel House
- Navigation repeater and vhf console
- Overhead lighting in hard top and safety lights at deck level
- 1-1/2" hand rails around Flybridge perimeter

- Teak decking on Flybridge

---

## Main Deck Exterior

---

- Teak decking all around main deck • All exterior stainless steel # 316 grade with Welds ground smooth & highly polished
- Seating area @ bow with removable Carbon Fiber table and filler piece for making into large sunpad lounge
- Large storage lockers port & stbd @ bow area (trunks)
- Central fuel tank fills port & stbd
- Cambered decks w/ outboard drain channels
- Water tight fwd deck hatch, access to anchor well. “Freeman hatch”
- Fwd deck hatch, & ventilation/escape hatch for fwd guest stateroom “Freeman hatch”
- Fresh water & salt water wash down hook up @ bow area
- Fire hose @ fwd stbd bow locker with 50’hose & fire hose nozzle
- Built-in, high pressure anchor chain wash system (fresh water)
- High polished S.S. hand rails
- S.S. hawse holes and ballards
- Port & stbd bulwark doors
- LED Overhead lights on dimmer controls for walk-arounds
- Deck safety lights at walk-arounds on main deck Aft Deck

---

## Aft Deck

---

- Teak decking
- Warping winches, port & stbd
- Port side integral stairway up to boat deck/fly-bridge (teak steps)
- FRP stbd side storage cabinet with refer, pop up TV and Corian counter top
- FRP molded bench seating with large dining table

- Port side locker with engine controls and thrusters
- LED overhead lights on dimmer controls
- VHF radio cabinet stbd side with PBX phone outlet
- Flood lights facing aft
- Fire hose @ stbd side w/ 50' hose & fire hose nozzle

## Owner's Stateroom and Head

---

- Access via Stbd side stairway up from main deck dining lounge, or boat deck via large sliding door
- A/C system
- King size walk around berth with large drawers & storage underneath
- Night stands with drawers
- Cedar lined hanging closets port and stbd
- Dresser cabinets port and stbd sides
- (2) Wall mounted reading lights (Cantalupi)
- Large windows port and stbd
- Hidden combination safe, stbd
- Hidden Automated innovations TV lift in stowed position under bed, lifts to foot of bed viewing
- LED overhead lights on dimmer controls
- His and Hers Heads with Tecma full size ceramic bowl
- Grohe faucets, Silestone counter tops and teak flooring.
- Fully enclosed shower with Grohe controls and Gel coated walls to match Silestone
- 110v ac duplex receptacles (GFI type in head) • Accent lighting (per plan)
- Overhead exhaust fan

---

## Dining Lounge

---

- Wet bar stbd side with beverage center, ice maker, bottle storage, and sink
- Bar height dining table with seating for eight
- Bar height buffet counter service from galley with four stools
- Forward storage cabinets and lockers with TV lift
- Port and stbd water tight Freeman sliding doors
- Stbd side stairway down to lower deck
- Large windows port, stbd, and forward for Panoramic viewing

---

## Galley

---

- Granite counter tops
- Floating floor system
- A/C system
- Teak flooring
- Double sink with Grohe faucet
- (2) Sub-zero full height refer with two freezer drawers @ bottom section • Large Sub Zero Wine Chiller
- Full-size dishwasher
- GE "Profile" trash compactor
- GE microwave with exhaust fan
- Wolf Gas cook top and electric oven
- Soap dispenser
- Insinkerator stainless garbage disposal with counter top air switch • Port side hinged dutch door from galley to side deck
- LED overhead lighting on dimmer controls

---

## Day Head

---

- 
- Port side window
  - “Tecma” head
  - Exhaust fan
  - Silestone on lavatory cabinet top, teak sole
  - LED overhead lights on dimmer controls
  - 110v ac GFI protected duplex receptacle
  - Accent lights @ cabinet base & valance

## Salon

---

- Single Freeman hinged aft door with fixed glass windows
- Extensive floor dampening system to reduce noise/vibration
- Cabin sole fitted with “Pyrotech” barrier padding • LED overhead lighting with dimmer controls
- Stbd side aft, custom cabinet with wet bar, refrigerator, sink, icemaker, bottle & glass storage
- Automatic window blinds with remote
- Pop up TV

## Pantry

---

- Large slide out pantry drawers
- DC electrical panel
- “Night Watch” ships monitoring system

## Forward Stateroom and Head

---

- Custom size island berth with hinged access to storage underneath
- Single bunk port side on cabinet top
- A/C system

- Cedar lined hanging lockers
- Choice of woodwork with stain finish
- LED overhead lights on dimmer controls
- Storage lockers
- “Freeman” escape/ventilation hatch w/ “OceanAir” screens
- (2) Wall mounted reading lights (Cantalupi)
- Head with port light, Silestone countertop, ceramic sink, full enclosed Silestone shower with teak grate floor, louvered lockers, & “Tecma” head
- Grohe faucets and shower controls
- Accent lighting (per plan)
- 110v ac duplex receptacles (GFI type in head)
- Overhead exhaust fan
- TV

---

## Port Guest Stateroom and Head

---

- King size walk-around Berth with drawers & storage underneath
- A/C system
- Cedar lined hanging lockers
- LED overhead lights on dimmer controls
- (2) wall mounted reading lights (Cantalupi)
- (2) Opening port lights - port side
- Wall mounted TV
- Port side head with port light, Silestone countertop, teak flooring, ceramic sink, full enclosed Silestone shower with teak grate floor, louvered lockers, & “Tecma” head
- Grohe faucets and shower controls
- Accent lighting (per plan)
- 110v ac duplex receptacles (GFI type in head)



- Overhead exhaust fan

---

## Laundry / Tech Room

---

- Full size Whirlpool washer/dryer
- Entertainment center/tech closet
- (1) large non-opening port light above desk/counter top on stbd side
- Internet connection
- Large storage under stairway

---

## VIP Stateroom and Head

---

- King size walk around berth with drawers & storage underneath
- A/C system
- Cedar lined hanging lockers
- LED overhead lights on dimmer controls
- (2) Wall mounted reading lights (Cantalupi)
- (2) Large non-opening port lights
- Wall mounted TV with hidden storage • Stbd head with port light, Silestone countertop, teak flooring, ceramic sink, full enclosed Silestone and FRP shower with teak grate floor, louvered lockers, & “Tecma” head
- Grohe faucets and shower controls
- Accent lighting (per plan)
- 110v ac duplex receptacles (GFI type in head)
- Overhead exhaust fan

---

## Captains Cabin and Head

---

- Access from either cockpit through water tight door or port side crew door
- A/C system

- 
- Wide elevated berth with lockers or drawers
  - Opening port light, stbd side above berth
  - Cedar lined hanging locker
  - “Tecma” head, ceramic sink w/ Grohe faucets, Corian lav counter top, FRP shower with glass door and FRP floor
  - 110v ac duplex receptacles (GFI type in head)
  - LED overhead lighting with dimmer controls
  - Combination wall safe
  - Overhead exhaust fan

## Crew Cabin and Head

---

- Accessed from either cockpit through “Freeman” water tight door or hatch in aft deck sole
- Air/con system
- Upper and lower bunks
- Opening port light
- Cedar lined hanging locker
- “Tecma” head, ceramic sink w/ Grohe faucets, Silestone lavatory counter top, FRP shower with glass door and FRP floor
- 110v ac duplex receptacles (GFI type in head) • LED overhead lighting with dimmer controls
- Combination safe
- Overhead exhaust fan

## Aft Mess and Crew Area

---

- Access from either cockpit through “Freeman” water tight door or port side crew entry
- A/C system
- Opening port light, port side
- LED overhead lighting with dimmer controls

- Corian counter tops, S.S. sink with Scanvick faucet, microwave, Sub-Zero under counter refrigerator & Sub-Zero under counter freezer, GE cook top two-burner, lockers for dishes
- Settee and removable sliding carbon fiber table
- (2) Full-size GE washer and (2) full size dryers
- Access door to Lazzerette
- 110v ac duplex receptacles (GFI type in galley)

---

## Wheel House

---

- Center helm station with complete engine control and thruster controls instrumentation & alarms, Garmin navigation electronics (see list), "Night Watch" ships monitoring system
- Red overhead lights above dash for navigating
- Corian counter top with chart light
- A/C, heating and windshield defroster system
- Custom built electric berthable helm chairs x 3
- AC & DC electrical panels
- Stbd side stairway down to main deck
- Drop down access ladder to Sky Bridge

---

## Main Deck Dining Lounge

---

- Pop up TV, storage cabinets, dining table and chairs
- Wet bar with refrigerator, ice maker, and sink
- Remote station for engine controls • Port and starboard custom "Freeman Marine" sliding doors
- Access stairs to wheelhouse and SkyMaster • Access stairwell to forward guest staterooms

---

## Swim Platform and Cockpit

---

- Teak decking with stairway port side up to aft deck (teak steps)
- Hand-held hot & cold water shower

- (3) Extra-large pop-up cleats, port center & stbd
- Water tight “Freeman” door, access to utility/crew & engine room
- S.S. hand rails @ stairs up to aft deck
- Water proof safety lights @ stairs up to aft deck
- Salt water hook-up
- (6) Underwater lights, in stern area
- (2) underwater Video cameras one facing aft, one facing forward • Built-in cabinets stbd cockpit with BBQ, sink and storage
- Robust Tow system integrated with tow line lockers
- 300 gallon gasoline tank USCG Regulations (with certificate)

---

## Wheel House Interior

---

- Full Garmin Navigation Package
- Center helm station with complete engine instrumentation & alarms, and “Night Watch” ships monitoring system
- A/C, heating and defrosting
- (3) Raised custom helm loungers
- STBD Aft door with access to master stateroom and boat deck
- Teak cabin sole
- 10mm clear fwd windshield glass
- AC & DC electrical panels
- LED overhead lighting with dimmer controls
- Red overhead lights above dash for navigating • Electric blinds at port and stbd side windows
- Stbd side stairway down to main deck
- Center pull down ladder to access Flybridge

---

## Tech Room

---

- Audio/Video rack with integrated system for yacht
- (1) full size GE washer and (1) full size GE dryer
- Internet station
- Misc storage lockers
- Non opening port light
- Desk with Silestone counter top
- (2) 110v ac duplex receptacles, GFI type

## Interior Design

---

- Painted satin finish with Boiserie Panels and Teak accents
- Engineering satin finish Teak flooring (per plan)
- Floating floors (per plan)
- Imtra LED overhead lighting on dimmer controls throughout
- Imtra accent lighting (per plan)
- Cantolupi reading lights (per plan)
- Cantolupi art lights (per plan)
- Beadboard satin finish headliner throughout (per plan)
- Silestone counter tops, and showers
- Carpet (per plan) (TBD)
- Hunter Douglas electric and manual blinds (per plan)
- Emtek interior door hardware

## Remarks

---

Paragon's new "Bahamas Cockpit" design—a large tiered mezzanine and cockpit area aft of the main salon intended as a grand entertainment platform. The covered upper mezzanine includes a relaxing seating area with plenty of storage while the lower cockpit features all of the amenities wanted at hand while enjoying Bahamian waters including a barbecue, wet bar, ice chipper and built-in cooler.

Designed specifically to tow a large center console, the SkyMaster yacht features integrated tow line stowage on the interior port and starboard sides of the cockpit. Another unique feature is the dedicated, USCG-compliant and RINA-certified, 300-gallon gasoline tank and pump designated for fueling the center console and/or tender on extended excursions.

Built upon Paragon's proven hull platform that consistently yields excellent sea keeping, the SkyMaster incorporates the latest in vibration attenuation technology, which is a cornerstone of the Paragon fly bridge furniture, the SkyMaster super yacht has been carefully designed and engineered to ensure the utmost in silence, stability and performance.

Within an interior designed by Marty Lowe, super yacht SkyMaster comfortably accommodates eight guests in three king staterooms, a fourth queen-size stateroom and an additional bunk, and includes accommodations for a captain and three additional crew members, all easily serviced by three full sets of laundry machines.

"We are very proud of the new SkyMaster," says company founder and President Scott Robinson. "To say we are meticulous in our design process may be an understatement, but this collaboration with owners who are experienced boaters and who are familiar with our process is proving to yield a fantastic result."

---

## Disclaimer

---

The Company offers the details of this vessel in good faith but cannot guarantee or warrant the accuracy of this information nor warrant the condition of the vessel. A buyer should instruct his agents, or his surveyors, to investigate such details as the buyer desires validated. This vessel is offered subject to prior sale, price change, or withdrawal without notice.

---

## Exclusions

---

Owner's personal belongings.

---

## Disclaimer

---

The Company offers the details of this vessel or yacht in good faith but cannot guarantee or warrant the accuracy of this information nor warrant the condition of the vessel. A buyer should instruct his representatives, agents, or his surveyors, to investigate such details as the buyer desires validated. This vessel or yacht is offered subject to prior sale, price change, or withdrawal

without notice.

# PHOTOS

**Sea Trials**



**Salon**



**Salon**



**Salon**



**Salon**



**Salon Game Table**





**Dining Lounge**



**Dining Lounge**



**Galley**



**Galley**



**Captain's Quarters**



**Crew Hallway**



**Crew Mess**



**Crew Stateroom**



**Forward King Stateroom**



**Hallway**



**SkyMaster**



**SkyMaster Head**



**Forward V-Berth Stateroom**



**Forward V-Berth Stateroom**



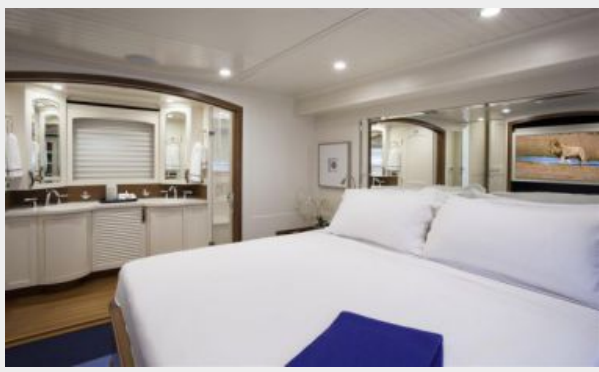
**Midships King Stateroom**



**Midships King Stateroom**



**Midships King Stateroom**



**Midships King Stateroom Head**



**Owner's Deck**



**Owner's Deck**



**Bahamas Cockpit**



**Aft Deck**



**Bow**



**Bow**



**Sky Bridge**



**Transom Door Detail**

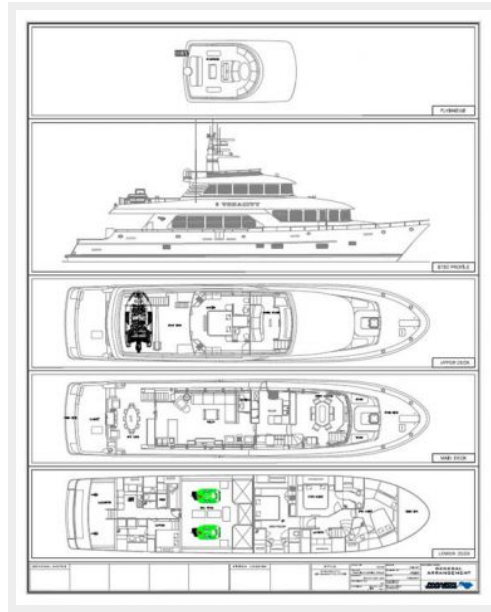


**Sky View**



**Running**





# CONTACTS

---

Andrey Shestakov, leading yacht broker of the sales department of Shestakov Yacht Sales Inc. Shestakov Yacht Sales Inc., the official representative of the Miami/Fort Lauderdale FL headquarters.

## Contact details

---

Email: [andrey@shestakovyachtsales.com](mailto:andrey@shestakovyachtsales.com)

Web: [shestakovyachtsales.com/en/](http://shestakovyachtsales.com/en/)

## Telephones

---

USA: +1(954)274-4435

## Office hours

---

Monday – Saturday: **9:00 - 21:00** EDT

Sunday: **closed**

## Address

---



Harbour Towne Marina, 850 NE 3rd St,  
STE 213, Dania, FL 33004