

# 49FT 2014 BENETEAU 49 GT HARD TOP — BENETEAU



**Builder:** BENETEAU

**Year Built:** 2014

**Model:** Cruiser

**Price:** PRICE ON APPLICATION

**Location:** United States

**LOA:** 49' 0" (14.94m)

**Beam:** 14' 1" (4.29m)

**Min Draft:** 2' 4" (0.71m)

**Max Draft:** 3' 7" (1.09m)

**Cruise Speed:** 28 Kts. (32 MPH)

**Max Speed:** 34 Kts. (39 MPH)

Our experienced yacht broker, Andrey Shestakov, will help you choose and buy a yacht that best suits your needs 49ft 2014 Beneteau 49 GT Hard Top — BENETEAU from our catalogue. Presently, at Shestakov Yacht Sales Inc., we have a wide variety of yachts available on our sale's list. We also work in close contact with all the big yacht manufacturers from all over the world.

If you would like to buy a yacht 49ft 2014 Beneteau 49 GT Hard Top — BENETEAU or would like help answering any questions concerning purchasing, selling or chartering a yacht, please call +1(954)274-4435

---

# TABLE OF CONTENTS

---

TABLE OF CONTENTS	2
SPECIFICATIONS	3
Basic Information	3
Dimensions	3
Speed, Capacities and Weight	3
Accommodations	3
Hull and Deck Information	3
Engine Information	4
DETAILED INFORMATION	5
Engines	5
Electricity	5
Exterior	5
Exclusions	6
Disclaimer	6
PHOTOS	7
CONTACTS	20
Contact details	20
Telephones	20
Office hours	20
Address	20

---

# SPECIFICATIONS

---

## Basic Information

---

**Category:** Cruiser

**Sub Category:** Express

**Model Year:** 2014

**Year Built:** 2014

**Country:** United States

## Dimensions

---

**LOA:** 49' 0" (14.94m)

**Beam:** 14' 1" (4.29m)

**Min Draft:** 2' 4" (0.71m)

**Max Draft:** 3' 7" (1.09m)

**Clearance:** 16' 9" (5.11m)

**MFG Length:** 51' 2" (15.60m)

## Speed, Capacities and Weight

---

**Cruise Speed:** 28 Kts. (32 MPH)

**Max Speed:** 34 Kts. (39 MPH)

**Displacement:** 27500 Pounds

**Water Capacity:** 170 Gallons

**Holding Tank:** 80 Gallons

**Fuel Capacity:** 344 Gallons

## Accommodations

---

**Total Cabins:** 3

**Total Berths:** 3

**Total Heads:** 2

## Hull and Deck Information

---

**Hull Material:** Fiberglass

---

## Engine Information

---

**Engines:** 2

**Manufacturer:** Volvo

**Model:** D6 IPS 600

**Engine Type:** Inboard

**Fuel Type:** Diesel

---

# DETAILED INFORMATION

---

## Engines

---

### Propulsion IPS:

- 2 x Volvo D6 IPS 600 - 2 x435 HP Diesel
- Fuel filter with decanter
- Sea water filter
- Air intakes on the deck for engine compartment cooling
- Hot air extraction forced by electric ventilators
- **Engine room foam soundproofed**
- Fire extinguishing system activated from the helm
- Stainless steel fuel filler

## Electricity

---

- 8 Batteries 12V (4 Engine batteries 50 Ah + Service batteries 140 Ah)
- 3 Bilge pumps: 2 Electric pumps - 1 Manual pump
- 2 Extinguishers
- Inverter 12V/24V
- Battery Isolator
- Battery Charger 24 V 60 Ah
- 7 KVA Generator (Cummins Onan)
- 220 V shore power (1 x 30 amp and 1 x 50 amp on glendenning.)

## Exterior

---

### Deck Equipment

- Forward sun deck: 7'7" x 6'7"
- Forward sun pad with back rests and cup holders
- Forward peak decked in plain solid teak
- Navigation lights
- Fender rings underneath hand rails

### Safety on Deck

- Half open pulpit in stainless steel with guardrail and hand rail
- 2 Stainless steel handrails on access to catwalk steps
- 2 Stainless steel handrails on forward sun deck
- 1 Grab rail behind the cockpit bench seat

---

## Cockpit

- **Cockpit IPS joystick control**
- **Solid teak hydraulic swim platform**
- **Natural solid teak cockpit table with electric leg**
- Natural solid teak cockpit
- Water tight Bose speakers
- Cockpit unit with sink, grill, refrigerator, and storage
- 6 person saloon convertible to sun deck
- Storage for liferaft on starboard side
- Cockpit shower hose
- Direct Lighting LED
- Water tight Bose speakers
- Pre-wired Cockpit TV

## Tender Garage

- Garage for inflatable (9'4") tender and outboard engine, in position
- Electrically opened, using 2 electric struts
- Major engine access to Volvo D6's through tender garage
- Storage for fenders and swim ladder
- Electric winch for tender with remote control

---

## Exclusions

Owner's personal belongings.

---

## Disclaimer

The Company offers the details of this vessel or yacht in good faith but cannot guarantee or warrant the accuracy of this information nor warrant the condition of the vessel. A buyer should instruct his representatives, agents, or his surveyors, to investigate such details as the buyer desires validated. This vessel or yacht is offered subject to prior sale, price change, or withdrawal without notice.

# PHOTOS

















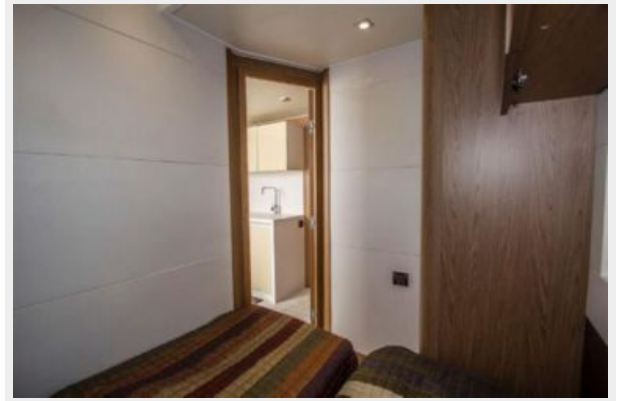














# CONTACTS

---

Andrey Shestakov, leading yacht broker of the sales department of Shestakov Yacht Sales Inc. Shestakov Yacht Sales Inc., the official representative of the Miami/Fort Lauderdale FL headquarters.

## Contact details

---

Email: [andrey@shestakovyachtsales.com](mailto:andrey@shestakovyachtsales.com)

Web: [shestakovyachtsales.com/en/](http://shestakovyachtsales.com/en/)

## Telephones

---

USA: +1(954)274-4435

## Office hours

---

Monday – Saturday: **9:00 - 21:00** EDT

Sunday: **closed**

## Address

---



Harbour Towne Marina, 850 NE 3rd St,  
STE 213, Dania, FL 33004