

## NEVERALONE — SLY YACHTS



**Builder:** [Sly Yachts](#)

**Year Built:** 2011

**Model:** Cruising/Racing Sailboat

**Price:** PRICE ON APPLICATION

**Location:** Italy

**LOA:** 46' 7" (14.20m)

**Beam:** 13' 1" (3.99m)

**Min Draft:** 10' 4" (3.15m)

Our experienced yacht broker, Andrey Shestakov, will help you choose and buy a yacht that best suits your needs **NEVERALONE** — Sly Yachts from our catalogue. Presently, at Shestakov Yacht Sales Inc., we have a wide variety of yachts available on our sale's list. We also work in close contact with all the big yacht manufacturers from all over the world.

If you would like to buy a yacht **NEVERALONE** — Sly Yachts or would like help answering any questions concerning purchasing, selling or chartering a yacht, please call **+1(954)274-4435**

---

# TABLE OF CONTENTS

---

TABLE OF CONTENTS	2
SPECIFICATIONS	3
Basic Information	3
Dimensions	3
Speed, Capacities and Weight	3
Accommodations	3
Hull and Deck Information	3
Engine Information	4
DETAILED INFORMATION	5
Owner's Comments	5
Construction	5
Machinery	5
Electrical Systems	6
Plumbing Systems	6
Tankage	7
Navigation Equipment	7
Domestic Equipment	8
Deck Equipment	8
Exclusions	9
Disclaimer	10
PHOTOS	11
CONTACTS	15
Contact details	15
Telephones	15
Office hours	15
Address	15

---

# SPECIFICATIONS

---

## Basic Information

---

**Category:** Cruising/Racing Sailboat

**Sub Category:** Racing Sailboat

**Model Year:** 2011

**Year Built:** 2011

**Country:** Italy

## Dimensions

---

**LOA:** 46' 7" (14.20m)

**LWL:** 41' 4" (12.60m)

**Beam:** 13' 1" (3.99m)

**Min Draft:** 10' 4" (3.15m)

## Speed, Capacities and Weight

---

**Displacement:** 17526.749829 Pounds

**Water Capacity:** 118.8774234 Gallons

**Fuel Capacity:** 44.90924884 Gallons

## Accommodations

---

**Total Cabins:** 3

**Total Berths:** 6

**Total Heads:** 2

## Hull and Deck Information

---

**Hull Material:** Carbon Composite

**Deck Material:** Teak

**Hull Designer:** Studio Lostuzzi

---

## Engine Information

---

**Engines:** 1

**Manufacturer:** Volvo Penta

**Model:** D2-55

**Engine Type:** Inboard

**Fuel Type:** Diesel

---

# DETAILED INFORMATION

---

## Owner's Comments

---

NEVER ALONE is a good and fast yacht, which scored 5<sup>th</sup> in its group race division during ARC 2014 (10<sup>th</sup> overall), on which I've spent my last 2 years improving safety and sturdiness for a safe Atlantic Crossing. With the help of Mr. Francesco Pelizza from AMS (Ancona ITALY), we have completely re-projected the keel and the inner keel structure, with a huge investment of time and money (the modification is available in a full set of documents). We have also improved the mast, with a two fixed point for a spinnaker pole, and with a fore staysail. Alessandro Mosconi, famous navigator winner of Sidney Hobart in the nineties, helped me to re-arrange the layout in the cockpit. We added 2 Cunninghams for the main sail reefs, to be faster in case of strong wind. It was an amazing experience – transforming a standard yacht into a fast ocean vessel.

## Construction

---

### *Hull, Deck & Superstructure Construction:*

- In fusion fiber glass reinforced with carbon fiber.
- Full teak decks.

### *Keel & Rudder:*

- Keel in stainless steel, rudder in carbon fiber and GRP.

## Machinery

---

### *Engine & Gearboxes:*

- VOLVO PENTA D2-55, total hours 600 @ 14/04/15.
- Gearboxes: S-Drive.

### *Maintenance & Performance:*

- Antifouling 20 March 2015.

*Propulsion & Steering:*

- GORI propeller.
- Solimar steering.

## Electrical Systems

---

*Voltage Systems:*

- 220v (1000watt inverter), 12 v.

*Battery Banks:*

- 4 x Batteries of 6v, total amps 450, AGM type (2014).

*Alternators:*

- Onboard.

*Generator:*

- Honda EU20I.

*Shore Power:*

- 220v Shore power connection.

*Other Electrical:*

- BM2 Nasa Marine, battery monitor.

## Plumbing Systems

---

*Fresh Water & Water Heating System:*

- Flojet pump for fresh water.

- Quick Boiler Square BXS series.
- Webasto heating available around the boat.

#### *Bilge Pump:*

- Bilge pump onboard.

#### *Watermaker:*

- Spectra watermaker – Ventura 200T 12v; still under guarantee, since it was purchased on 9<sup>th</sup> June 2014.

## **Tankage**

---

#### *Fuel:*

- Total capacity of 170 litres.

#### *Fresh water:*

- Total capacity of 450 litres.

#### *Grey/Blackwater holding tanks:*

- One available in the bathroom in front of the kitchen.

## **Navigation Equipment**

---

- Refit with Raymarine I60 sailing instrumentation, p70, and i50. AIS350 passive (2013), Simrad B24.

#### *In cockpit:*

- Simrad NX40.

---

*At chart table:*

- Computer available with Actisense NGT interface.

*Communications Equipment:*

- Simrad RS82 VHF, Iridium Pilot as satellite phone

---

## Domestic Equipment

---

*Heating & Ventilation:*

- Webasto.

*Entertainment:*

- Radio.
- CD player.

*Lighting:*

- All LEDS.

---

## Deck Equipment

---

*Rig:*

- Fractional cutter rig.
- Backstay, fore staysail and the 2 x running backstays in tech-textile.
- Rod rigging.
- Mast in carbon fiber, made by Formula.

*Winches:*

- HARKEN: 1 electrical for the main sail, and 7 normal Harken 2 speeds



*Sails:*

- Surface Area of Mainsail + Jib: 108%, 141m2.
- Onesail Millennium (2011). Mainsail: 80m2.
- Onesail Millennium (2011). Jib 108%: 61m2.
- Onesail Gennaker: 180sqm (2011). Murphy&NYE gennaker: 145sqm (2014).
- Murphy &NYE Staysail: 29sqm (2014).
- Saumag Storm jib STORM BAG.

*Anchoring & Mooring Equipment:*

- Quick, aries flair raider.

*Tender & Outboard:*

- 2 tenders available.
- Outboard is Suzuki 2.5hp, c. 5 hours running time.

*Safety Equipment:*

- All equipment required, and properly maintained.
- Serviced EPIRB.
- 2 x Liferrafts available, made by Ocean Safety – with hard covers.
- Drogue with line from UK Ocean Safety.

*Fire-fighting equipment:*

- All mandatory, not expired.

## Exclusions

Owner's personal belongings.

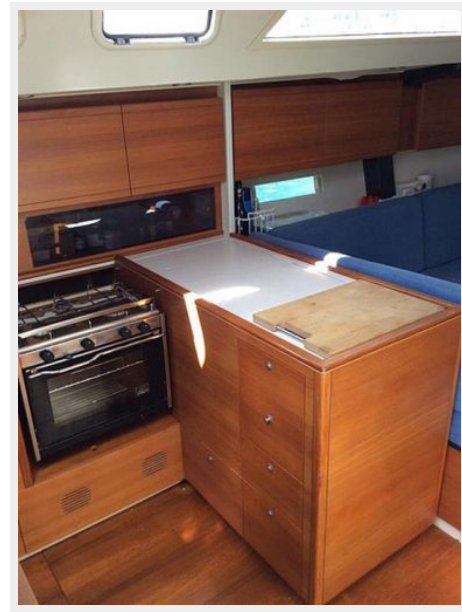
## Disclaimer

---

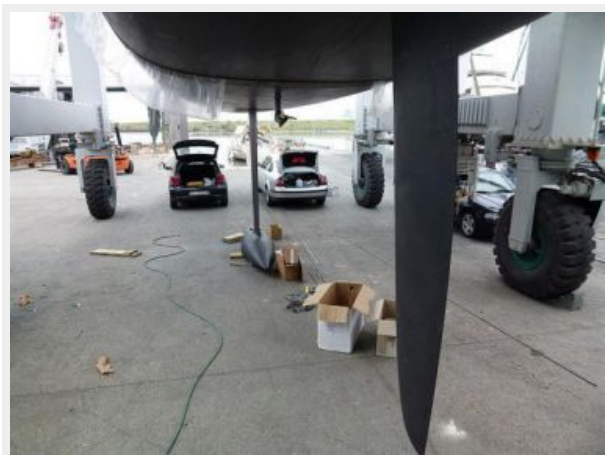
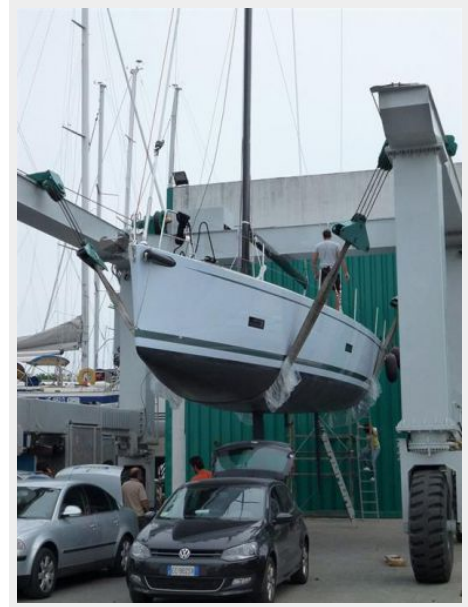
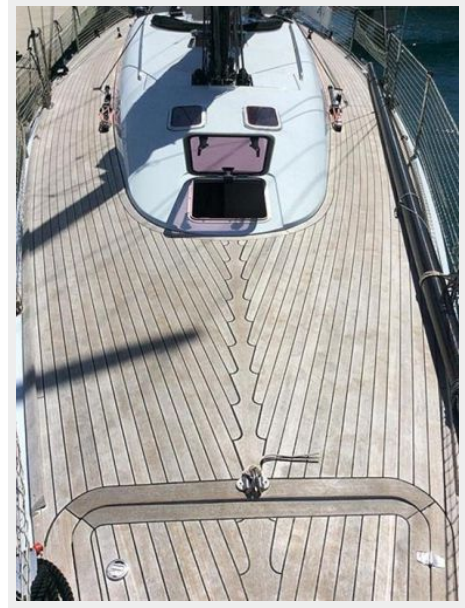
The Company offers the details of this vessel or yacht in good faith but cannot guarantee or warrant the accuracy of this information nor warrant the condition of the vessel. A buyer should instruct his representatives, agents, or his surveyors, to investigate such details as the buyer desires validated. This vessel or yacht is offered subject to prior sale, price change, or withdrawal without notice.

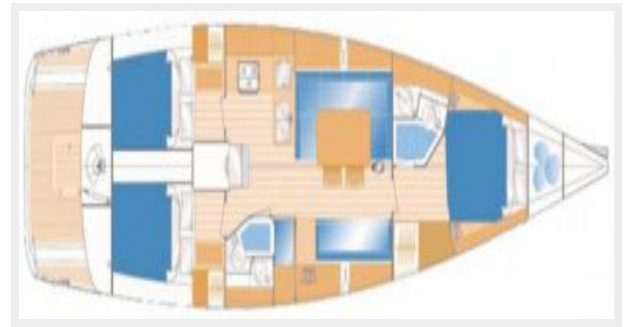
# PHOTOS











# CONTACTS

---

Andrey Shestakov, leading yacht broker of the sales department of Shestakov Yacht Sales Inc. Shestakov Yacht Sales Inc., the official representative of the Miami/Fort Lauderdale FL headquarters.

## Contact details

---

Email: [andrey@shestakovyachtsales.com](mailto:andrey@shestakovyachtsales.com)

Web: [shestakovyachtsales.com/en/](http://shestakovyachtsales.com/en/)

## Telephones

---

USA: +1(954)274-4435

## Office hours

---

Monday – Saturday: **9:00 - 21:00** EDT

Sunday: **closed**

## Address

---



Harbour Towne Marina, 850 NE 3rd St,  
STE 213, Dania, FL 33004