

LADY BELFAIR — CATAMARAN



Судостроитель: CATAMARAN

Год постройки: 2003

Модель: Катамаран

Цена: ЦЕНА ЯХТЫ ПО ЗАПРОСУ

Местонахождение: United States

Длина общая: 72' 0" (21.95m)

Ширина: 26' 0" (7.92m)

Макс. осадка: 3' 0" (0.91m)

Крейс. скорость: 24 Kts. (28 MPH)

Макс. скорость: 30 Kts. (35 MPH)

Купить **LADY BELFAIR — CATAMARAN** а также выбрать подходящую вам яхту из нашего каталога яхт вам поможет опытный яхтенный брокер Андрей Шестаков. На сегодняшний день компания **Shestakov Yacht Sales Inc.** имеет большое количество яхт в собственном списке продаж, а также тесно сотрудничает со всеми крупными яхтенными производителями по всему миру.

Для того чтобы купить яхту **LADY BELFAIR — CATAMARAN** а также проконсультироваться по любому вопросу связанному с покупкой, продажей, чартером яхт позвоните по телефону **+7(918)465-66-44**.

ОГЛАВЛЕНИЕ

ОГЛАВЛЕНИЕ	2
ХАРАКТЕРИСТИКИ	3
Основная информация	3
Размеры	3
Скорость, вместимость и масса	3
Размещение	3
Корпус и палуба	3
Информация о двигателе	3
ПОДРОБНОЕ ОПИСАНИЕ	4
Overview	4
Deck House Arrangements	4
Hull	5
Underway Machinery	6
Engines	6
Generator & Transmission	7
Исключения	7
Отказ от ответственности	7
ФОТОГРАФИИ	8
Profile	8
Profile - Port Side	8
КОНТАКТЫ	18
Контактная информация	18
Телефоны	18
Время работы	18
Адрес	18

ХАРАКТЕРИСТИКИ

Основная информация

Тип судна: Катамаран

Модельный год: 2003

Год постройки: 2003

Страна: United States

Размеры

Длина общая: 72' 0" (21.95m)

Ширина: 26' 0" (7.92m)

Макс. осадка: 3' 0" (0.91m)

Скорость, вместимость и масса

Крейс. скорость: 24 Kts. (28 MPH)

Макс. скорость: 30 Kts. (35 MPH)

Водоизмещение: 70000 Pounds

Размещение

Всего кают: 3

Всего ком. состава: 4

Корпус и палуба

Материал корпуса: Fiberglass

Информация о двигателе

Двигатели: 2

Производитель: Caterpillar

Модель: 3412E

Тип двигателя: Inboard

Тип топлива: Diesel

ПОДРОБНОЕ ОПИСАНИЕ

Overview

Her interior lay-out is generous and spacious as well as practical

Deck House Arrangements

The **pilothouse** is equipped with two pedestal mounted helm and mate seats. There are entrance doors to either side, an overhead hatch, and "at sea" table and couch aft of the helm seat. The aft pilothouse has an upper salon equipped with a wet bar, ice maker, and marble style counters in the part aft corner. In the starboard corner, there are two chairs and an end table. The center of the upper salon is a desk housing a second computer, two chairs, and built-in cabinetry. There are sliding aft entrance doors opening onto the upper aft deck.

The **deck** is equipped with back-up docking control, deck chairs, and an FRP storage box. The railing is painted aluminum with double life lines around. Non-skidded area. The pilothouse, upper salon, is equipped with wooden blinds and curtains for the entrance doors. There are steps leading down from the port side pilothouse/salon to the main salon.

The **main salon** is equipped with furniture, couch with end tables on the starboard side, and double sliding entrance doors from the aft deck. There is a dining room table on the port side of the salon and an entertainment center in the port aft corner housing a recessed television set. The entertainment center is equipped with an HD Direct TV antenna, a Samsung model CDP-CX450. There is Monster Power model HTS3600 Home Theater Reference Center, an Integra DVD Player, and Integra model Video selector, and remote speakers throughout. Aft of the sound center, there are steps leading up to the pilothouse bridge area. The galley is separated by a countertop.

The **aft deck** is equipped with a couch storage below, an aft deck table with chairs, transom gates, starboard and port, leading down to the upper and lower swim platforms. There is an island Engineering hydraulic lift stainless steel ram for the tender. The tender is a Boston Whaler, HINL BWCE2768D808/150MT-331 powered with a 2008 Mercury model 60ELPT-BF 60 HP 4-stroke EFI outboard motor with a 3-blade stainless propeller. The engine serial number is 1C071963. The tender has a full enclosure cover. Forward to either corner of the cockpit are the decks equipped with painted aluminum hand rails with double life lines leading to the fore-deck. Sufficient non-skid throughout. In the port forward corner of the cockpit, there is a U-Line refrigerator with ice make, a stainless steel sink, and a Miele electric grill and storage below. On the starboard side forward corner of the cockpit is a locker housing life saving equipment and cleaning utensils and brushes.

The **galley** is equipped with double stainless steel sinks with hot and cold pressurized running water and equipped with a garbage disposal, a GE dishwasher, a GE trash compactor, and built-

in cabinetry. Aft of the counter, there is a 5-burner GE profile countertop mounted stove, a GE profile spacemaker oven, and a GE model Arctica upright refrigerator with freezer with ice maker. There is a port side entrance door to a guest stateroom.

The **guest stateroom** is equipped with a queen sized bunk. There are steps leading down into a head equipped with sinks, vacu-flush style head, and separate shower stall. There is a hanging locker at the base of the stairs. There are blinds on ports and carpet throughout the stateroom. There is a starboard side passageway from the galley area. The passageway has a closet housing a stacked washer and dryer. The principle electrical panels are located in this area. There is a starboard side day head equipped with a vacu-flush toilet and sink. The passageway continues back aft to the master stateroom.

The **master stateroom** is equipped with a queen sized centered bunk, end tables to either side, and an overhead opening hatch. There are double fixed ports to either side. Aft of the bunk there is a double door closet, a vanity with a mirror to port, an entertainment center to starboard equipped with a Sony Digital Satellite Receiver, a Furman Power Conditioning, a JVC model XV-S500 DVD/VCD/CD player, a Samsung VCR, an Integra, and a flat screen Sharp bracket mounted television. From the master stateroom, there are steps leading down the starboard side housing built-in cabinetry and hanging lockers. On the port side, there are steps leading down to the master stateroom head.

The **master stateroom head** is equipped with a vacu-flush toilet, a sink with hot and cold pressurized running water with built-in cabinetry above the counter and below the counter. Forward of that is an enclosed shower.

There are steps leading down from the port side galley/salon area to the Captain's quarters/guest stateroom. The stateroom is equipped with a bunk, built-in cabinetry, hanging locker, and an enclosed shower.

The interior throughout the vessel is naturally finished with satin coats of varnish. The main salon and pilothouse and passageways have maple flooring. The staterooms are carpeted. There are blinds throughout the vessel. There are no stains on the fabrics and the vessel appears very well maintained throughout, well organized, good housekeeping.

Hull

Type Hull

- Multihull, catamaran, planing style hull with jet drives

How Laid Up

- hand laid up, female mold, matte, cloth, woven roving with polyester resins
- Planking/Shell Plating: FRP

Bulkheads

- Transverse ply partials in each hull section with three watertight FRP synthetic core bulkheads per side. The watertight bulkheads, three per side

Type Decks

- Molded FRP with reinforcements at the hull to deck joint
- Sandwich type construction

Reinforcements

- The two amas, superstructure, and house side are constructed utilizing composite vacuum bagged fabrication with epoxy and synthetic coring. Construction materials consist of FRP biaxial-triaxial-quadaxial cloth and unidirectional carbon fiber materials.

Underway Machinery

Steering Gear

- Single station, Hamilton Jet joystick module steering with Hamilton Jet shift and throttle controls. Hamilton Jet control panel modules with alarms, primary and secondary, power indicators, and back up control. Jet Drive Dual Universal Offset drive shafts through Hamilton model 21/003 Water Jets with Reverse buckets and integral hydraulic steering control system. The outdrives are fitted with a Barnaclean Sonic Marine Growth Inhibiting System.
- Includes Emergency back-up joysticks

Propellers

- Dual Hamilton Jets, Port Hamilton Drive Unit Number 1140, Starboard Hamilton Drive Unit Number 521314

Engines

Twin Caterpillar 3412E.

Serial Number

- Port: 9KS01338
- Starboard: 9KS01340

1400 Horsepower

Fresh Water Cooling Systems

Generator & Transmission

Generator

(2) phasor driven with a Kabota diesel

AC/DC: 120/240 VAC

KW Output

Generator #1: 15KW Starboard side

Generator #2: KW Port Side

Transmission

Twin Disc, fresh water cooled, counter rotating drive

Model: MG6557SC

Serial Number:

- Port: 9A1463
- Starboard: 9A164

Ratio: 1.66:1 driving Hamilton Jet Drives

Исключения

При продаже яхты исключаются личные вещи владельца.

Отказ от ответственности

Компания предоставляет описание судна или яхты добросовестно, но не может гарантировать точность этой информации, а также не ручается за техническое состояние. Покупатель должен проинструктировать своих агентов или оценщиков исследовать представленную информацию более подробно, по собственному желанию. Продажа судна или яхты, изменение цены или снятие с продажи будет происходить без предварительного уведомления.

ФОТОГРАФИИ

Profile

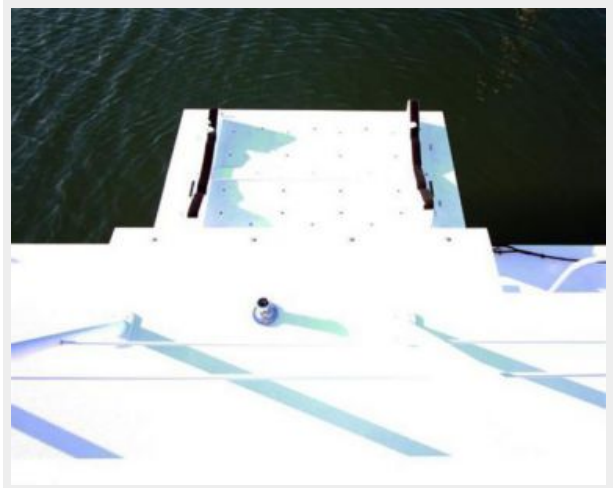


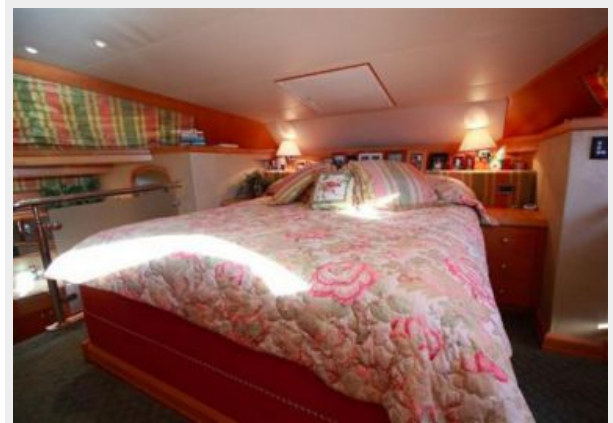
Profile - Port Side

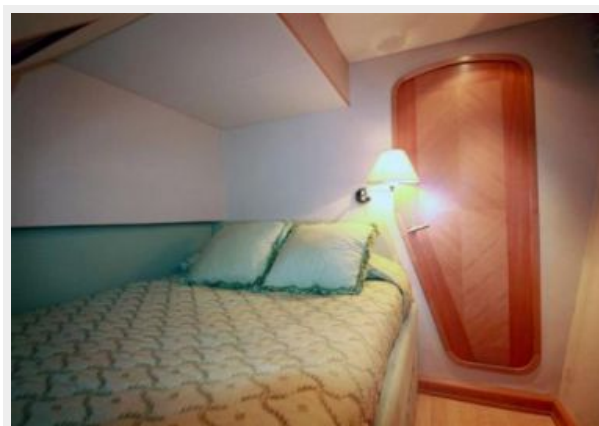




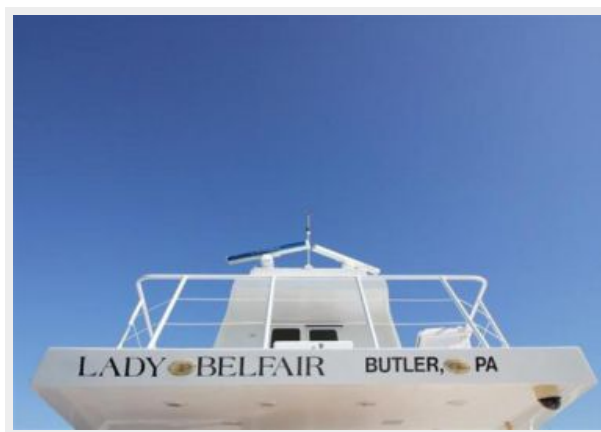
















КОНТАКТЫ

Андрей Шестаков (Andrey Shestakov) – ведущий яхтенный брокер отдела продаж яхт и судов компании Shestakov Yacht Sales Inc. Официальный представитель Shestakov Yacht Sales Inc. для русскоговорящих клиентов в центральном офисе компании в Майами/Форт Лодердейл/Флорида/США.

Контактная информация

Email: andrey@shestakovyachtsales.com

Web: shestakovyachtsales.com

Телефоны

Краснодарский край: **+7(918)465-66-44**

США, Майами, Флорида: **+1(954)274-4435**

Время работы

Понедельник – Суббота: **9:00 - 21:00**
EDT

Воскресенье: **Закрито**

Адрес



Harbour Towne Marina, 850 NE 3rd St,
STE 213, Dania, FL 33004