

CLEOPATRA — MAINSHIP



Builder: MAINSHIP

LOA: 40' 0" (12.19m)

Year Built: 1986

Beam: 14' 0" (4.27m)

Model: Motor Yacht

Price: PRICE ON APPLICATION

Location: United States

Our experienced yacht broker, Andrey Shestakov, will help you choose and buy a yacht that best suits your needs **CLEOPATRA — MAINSHIP** from our catalogue. Presently, at Shestakov Yacht Sales Inc., we have a wide variety of yachts available on our sale's list. We also work in close contact with all the big yacht manufacturers from all over the world.

If you would like to buy a yacht **CLEOPATRA — MAINSHIP** or would like help answering any questions concerning purchasing, selling or chartering a yacht, please call **+1(954)274-4435**

TABLE OF CONTENTS

TABLE OF CONTENTS	2
SPECIFICATIONS	4
Overview	4
Basic Information	4
Dimensions	4
Speed, Capacities and Weight	4
Accommodations	4
Hull and Deck Information	5
Engine Information	5
DETAILED INFORMATION	6
Accommodations	6
Master Stateroom, Aft	6
Guest Stateroom, Forward	6
Salon	6
Master Head	7
Guest Head, Forward	7
Galley, Main Deck, Amidship Port	7
Helm / Electronics and Navigation	7
Deck	8
Engine and Mechanical Equipment	8
Electrical System / Equipment	8
Additional Features / Equipment	9
Exclusions	9
Salesman's Comments	9
Exclusions	9
Disclaimer	9
PHOTOS	10
Master Stateroom, Aft	10

Guest Stateroom, Forward	10
Salon 1	10
Salon 2	10
Salon 3 - Breakfast Bar	10
Galley	10
Helm / Electronics & Navigation 1 - Upper Helm	11
Helm / Electronics & Navigation 2 - Lower Helm	11
Helm / Electronics & Navigation 3 - SAT TV	11
Deck 1 - Upper Helm Seating	11
Deck 2 - Aft Deck	11
Deck 3 - Aft Deck	11
Profile 2	12
CONTACTS	13
Contact details	13
Telephones	13
Office hours	13
Address	13

SPECIFICATIONS

Overview

This beautiful Mainship Motor Yacht shows pride of ownership throughout! The beautiful interior is well maintained and features KVH SAT TV. The Engine Room has been maintained to a high standard. This boat would make a perfect live-aboard or weekend cruiser! **ALSO INCLUDED IS A 2015 DEEP WATER SLIP ON THE BEAVER DAM CREEK! CALL FOR DETAILS!!!**

Basic Information

Category: Motor Yacht

Sub Category: Double Cabin

Model Year: 1986

Year Built: 1986

Country: United States

Vessel Top: Hardtop

Fly Bridge: Yes

Dimensions

LOA: 40' 0" (12.19m)

Beam: 14' 0" (4.27m)

Speed, Capacities and Weight

Displacement: 24000 Pounds

Water Capacity: 140 Gallons

Fuel Capacity: 300 Gallons

Accommodations

Total Cabins: 2

Total Berths: 6

Sleeps: 6

Total Heads: 2

Hull and Deck Information

Hull Material: Fiberglass

Deck Material: Fiberglass

Engine Information

Engines: 2

Manufacturer: Crusader

Model: 454

Engine Type: Inboard

Fuel Type: Gas

DETAILED INFORMATION

Accommodations

Sleeps six owners and guests in two Staterooms for a total of six berths. One Master Head with shower, one Guest Head with shower.

Master Stateroom, Aft

- Head
- Closet
- Shower
- Carpeting
- Night stand
- Queen berth
- Hanging locker
- Flat-screen TV
- Under bed storage
- Air conditioning / heater with controls

Guest Stateroom, Forward

- TV
- Head
- Shower
- V-berth
- Carpeting
- Night stand
- Hanging locker
- Air conditioning
- Under bed storage

Salon

- Sofa
- Chair
- Storage
- Carpeting
- KVH SAT TV
- Flat-screen TV

- Cable TV hookups
- Entertainment center
- Breakfast bar w/ stools
- Stereo system w/ speakers
- Air conditioning / heater with controls

Master Head

- Tub
- Sink
- Shower
- Medicine cabinet
- Overboard, holding tank, electric head

Guest Head, Forward

- Sink
- Shower
- Overboard, holding tank, electric head

Galley, Main Deck, Amidship Port

- Sink
- Ice maker
- Water heater
- Alcohol, electric stove
- Pressure fresh water system
- Nova Cool refrigerator w/ freezer

Helm / Electronics and Navigation

- Hailer
- Intercom
- Compass
- Depth sounder
- Furuno 1721 radar
- Ray Jeff VHF radio (secondary)
- West Marine VHF radio (primary)
- Navico PH500 auto pilot w/ remote
- Datamarine S-100KL speed & distance logs

- Garmin 220 GPS interfaced w/ radar & auto pilot

Deck

- Sink
- Anchor
- Fenders
- Bow lights
- Docking lights
- Transom lights
- (2) Helm seats
- Swim platform
- New enclosure
- Flat-screen TV
- Aft Deck cover
- Navigation lights
- Bow pulpit w/ rails
- Goode electric windlass
- Single, fixed search light
- Aft Deck air conditioning / heat

Engine and Mechanical Equipment

- Fire alarm
- Fuel filters
- Bilge blowers
- Smoke alarm
- Air conditioning
- Fire extinguisher
- Hydraulic steering
- Oil pressure alarm
- Fire control system
- Engine synchronizers
- Engine fuel shut-off valve
- Engine temperature alarm
- (3) Automatic bilge pumps
- Cabin, Bridge engine controls
- New risers, manifolds & elbows (2014)
- Twin 350 hp. Gas I/B Crusader 454's w/ 1029 hrs.

Electrical System / Equipment

- Dockside cables
- Kohler 7.5kW generator
- 12v DC electrical system
- Automatic battery charger
- 110v AC electrical system

Additional Features / Equipment

- **2015 DEEP WATER SLIP ON THE BEAVER DAM CREEK**

Exclusions

Owner's personal gear and items.

Salesman's Comments

This beautiful Mainship Motor Yacht shows pride of ownership throughout! The beautiful interior is well maintained and features KVH SAT TV. The Engine Room has been maintained to a high standard. This boat would make a perfect live-aboard or weekend cruiser! **ALSO INCLUDED IS A 2015 DEEP WATER SLIP ON THE BEAVER DAM CREEK! CALL FOR DETAILS!!!**

Exclusions

Owner's personal belongings.

Disclaimer

The Company offers the details of this vessel or yacht in good faith but cannot guarantee or warrant the accuracy of this information nor warrant the condition of the vessel. A buyer should instruct his representatives, agents, or his surveyors, to investigate such details as the buyer desires validated. This vessel or yacht is offered subject to prior sale, price change, or withdrawal without notice.

PHOTOS

Master Stateroom, Aft



Guest Stateroom, Forward



Salon 1



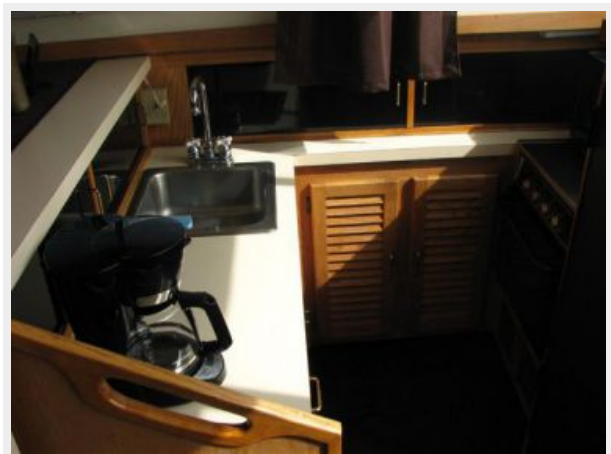
Salon 2



Salon 3 - Breakfast Bar



Galley



Helm / Electronics & Navigation 1 - Upper Helm



Helm / Electronics & Navigation 2 - Lower Helm



Helm / Electronics & Navigation 3 - SAT TV



Deck 1 - Upper Helm Seating



Deck 2 - Aft Deck



Deck 3 - Aft Deck



Profile 2



CONTACTS

Andrey Shestakov, leading yacht broker of the sales department of Shestakov Yacht Sales Inc. Shestakov Yacht Sales Inc., the official representative of the Miami/Fort Lauderdale FL headquarters.

Contact details

Email: andrey@shestakovyachtsales.com

Web: shestakovyachtsales.com/en/

Telephones

USA: +1(954)274-4435

Office hours

Monday – Saturday: **9:00 - 21:00** EDT

Sunday: **closed**

Address



Harbour Towne Marina, 850 NE 3rd St,
STE 213, Dania, FL 33004