

ROCKET QUEEN — HATTERAS



Builder: HATTERAS

Year Built: 2009

Model: Sport Fisherman

Price: PRICE ON APPLICATION

Location: Panama

LOA: 54' 0" (16.46m)

Beam: 17' 3" (5.26m)

Max Draft: 4' 2" (1.27m)

Our experienced yacht broker, Andrey Shestakov, will help you choose and buy a yacht that best suits your needs **Rocket Queen — HATTERAS** from our catalogue. Presently, at Shestakov Yacht Sales Inc., we have a wide variety of yachts available on our sale's list. We also work in close contact with all the big yacht manufacturers from all over the world.

If you would like to buy a yacht **Rocket Queen — HATTERAS** or would like help answering any questions concerning purchasing, selling or chartering a yacht, please call **+1(954)274-4435**

TABLE OF CONTENTS

TABLE OF CONTENTS	2
SPECIFICATIONS	3
Overview	3
Basic Information	3
Dimensions	3
Speed, Capacities and Weight	3
Accommodations	4
Hull and Deck Information	4
Engine Information	4
DETAILED INFORMATION	5
Highlights	5
Salon	5
Galley	5
Master Stateroom	6
Master Head & Guest Head	6
Guest Stateroom	7
Guest Stateroom 2	7
Cockpit	7
Exclusions	8
Disclaimer	8
PHOTOS	9
CONTACTS	17
Contact details	17
Telephones	17
Office hours	17
Address	17

SPECIFICATIONS

Overview

The Hatteras 54 Convertible is renowned for her incredible strength and seaworthiness. Her large flybridge and cockpit with raised seating create excellent visibility and extra room to work the lines. She offers three staterooms and two heads.

The well-designed interior combines the classic, genuine wood cabinetry and accents, with the modern state-of-the-art systems and electronics earning her rave reviews from design experts, journalists, and marine enthusiasts everywhere.

She is truly a quintessential convertible from one of the world's best builders of superior sport fishing boats.

Basic Information

Category: Sport Fisherman

Model Year: 2009

Year Built: 2009

Country: Panama

Fly Bridge: Yes

Dimensions

LOA: 54' 0" (16.46m)

LWL: 46' 0" (14.02m)

Beam: 17' 3" (5.26m)

Max Draft: 4' 2" (1.27m)

Clearance: 13' 1" (3.99m)

Speed, Capacities and Weight

Water Capacity: 192 Gallons

Holding Tank: 91 Gallons

Fuel Capacity: 1250 Gallons

Accommodations

Total Cabins: 3

Total Heads: 2

Hull and Deck Information

Hull Material: Fiberglass

Engine Information

Engines: 2

Manufacturer: Caterpillar

Model: C-32

Engine Type: Inboard

Fuel Type: Diesel

DETAILED INFORMATION

Highlights

This Hatteras 54 Convertible, a legendary performer, is renowned for her incredible strength and seaworthiness. She draws just 4'2" thanks to deep tunnel pockets. Her large flybridge and cockpit with raised seating create excellent visibility and extra room to work the lines. The well-designed interior offers three staterooms and two heads, and combines the classic (genuine wood cabinetry and accents) with the modern (state-of-the-art systems and electronics). Earning her rave reviews from design experts, journalists, and marine enthusiasts everywhere.

This truly is a quintessential convertible from one of the world's best builders of superior sport fishing boats.

Salon

The salon features a satin mahogany wood interior with an L-shaped Hatteras sofa complete with rod storage. A 40" TV is easily visible from all areas of the salon and galley. An ice maker is also conveniently located just inside the salon door.

- Carpeting
- Whisperwall headliner
- Hunter Douglas applause duette easy rise blinds
- Fixed frameless windows with tinted safety glass
- Custom L-settee with rod storage, cushions and throw pillows
- Entertainment center including 40" LCD TV, AM/FM surround sound, stereo receiver with DVD/CD player
- AC and DC light fixtures
- Polished stainless-steel threshold at salon door
- Smoke detector & Carbon monoxide detector
- Hinged glass door to cockpit

Galley

The fully equipped galley offers a four burner cooktop, garbage disposal, Sub Zero undercounter, drawer style refrigerator and freezer units, and a microwave/convection oven. Access to galley storage is exceptional through six deep drawers located within the galley backsplash.

- Amtico vinyl-strip flooring
- Whisperwall headliner
- Solid-surface countertops
- Under-mount sink and storage cabinets

- Sub-Zero under-counter refrigerator and freezer drawer units
- 4 Burner ceramic cooktop
- Microwave/convection oven covered by cabinet door
- One-half hp continuous feed garbage disposal
- L-shaped dinette with storage below
- Electric water level gauge

Master Stateroom

The master features a walk around queen berth with cedar-lined storage underneath. Air conditioning disperses through fluted wood valances over the entire room, eliminating cold and hot spots throughout. In addition to the hull side cabinetry, a double cedar lined hanging locker and dresser provides an abundance of storage.

- Carpeting
- Whisperwall headliner
- Padded covering on hullside
- Concealed pocket door from companionway
- Queen-sized tapered berth with upholstered headboard and cedar-lined storage underneath
- Upholstered berth base
- Polyfoam mattress, spread, throw pillows, pillows, pillow shams, mattress pad and sheets
- Cedar-lined hanging locker
- Bowed dresser with drawers and cabinet and Nightstands with drawers
- AC and DC light fixtures
- 20" LCD TV
- AM/FM stereo receiver w/CD/DVD player and eight disc CD changer
- Full-length mirror
- Clear plexi-mirror (aft bulkhead)
- Carbon monoxide detector & Smoke detector

Master Head & Guest Head

- Amtico vinyl-strip flooring
- Whisperwall headliner
- Solid-surface countertops with solid-surface backsplash, sidesplash and integral sink over storage cabinet
- Linen storage cabinets (master) Hardwood base boards
- Stall shower
- Screened overhead ventilator hatch with privacy cover Towel bar
- AC and DC light fixtures
- Plexi-mirror around upper cabinet

- Plexi mirrored ceilings
- Master and port heads

Guest Stateroom

The bow stateroom features a queen berth, full-length mirror, cedar lined hanging locker and port and starboard overhead storage lockers

- Carpeting
- Whisperwall headliner
- Cedar-lined hanging/storage lockers with automatic light
- Screened overhead hatch with privacy cover
- AC and DC light fixtures AC lights have dimmers
- Full-length mirror
- Clear plexi-mirror (forward bulkhead)
- Private access to head
- Smoke detector & Carbon monoxide detector

Guest Stateroom 2

Side by side berths in the starboard stateroom, along with a double cedar lined hanging locker and nightstand with drawers. Unique for a boat of this size.

- Carpeting
- Whisperwall headliner
- Side-by-side twin berths with storage underneath
- Upholstered berth bases
- Double cedar-lined hanging locker w/doors
- Nightstand w/drawers
- Full-length mirror
- Private access to head
- Smoke detector & Carbon monoxide detector
- Mirrored aft bulkhead

Cockpit

The cockpit is designed and finished to the highest standard with doors that hide the twin inlets and quick disconnects for fresh and saltwater wash-downs.

- Seating with cushions across upper mezzanine
- ISO standard scuppers in cockpit and cockpit hatches
- Polished anodized aluminum ladder to flybridge w/acrylic steps

- Transom door
- Retractable shore cords (2)
- Seawater and freshwater wash down outlets with Hatteras patented quick disconnect
- Shore water connection with pressure-reducing valve
- Bait and tackle drawers, upper starboard mezzanine
- 5.4-cubic-foot bait freezer, port mezzanine
- Bait and tackle drop-in box, lower starboard mezzanine
- 2 x 14-gallon storage tubs, lower port mezzanine
- Hatch with chrome plated brass lock to engine compartment
- Hinged glass door to deckhouse
- DC overhead lights under flybridge overhang
- Stereo speakers w/volume control

Exclusions

Owner's personal belongings.

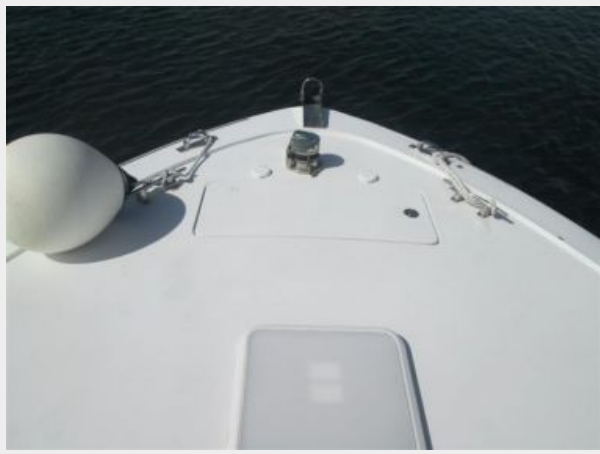
Disclaimer

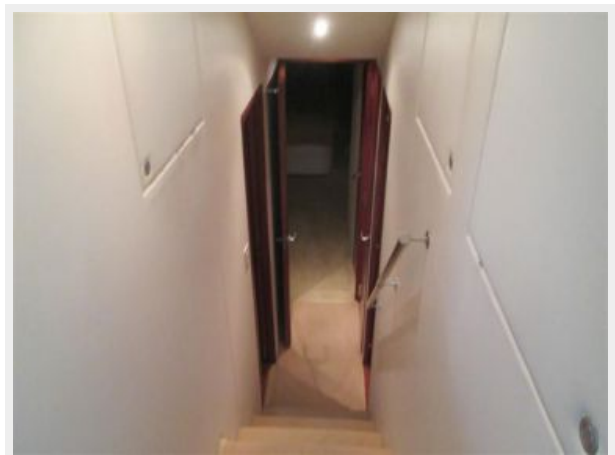
The Company offers the details of this vessel or yacht in good faith but cannot guarantee or warrant the accuracy of this information nor warrant the condition of the vessel. A buyer should instruct his representatives, agents, or his surveyors, to investigate such details as the buyer desires validated. This vessel or yacht is offered subject to prior sale, price change, or withdrawal without notice.

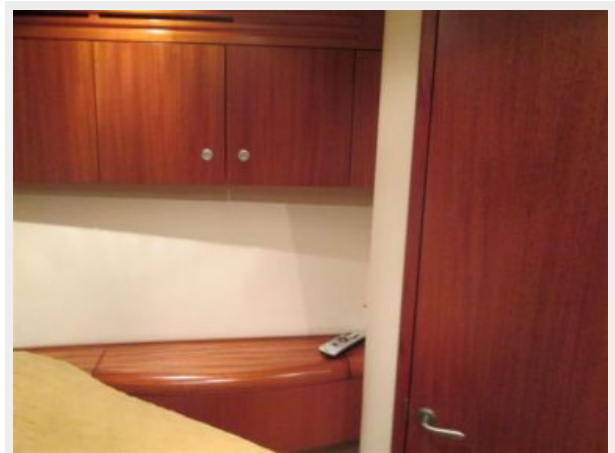
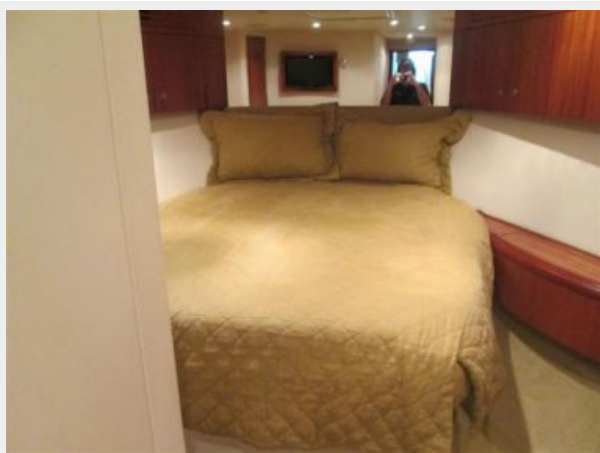
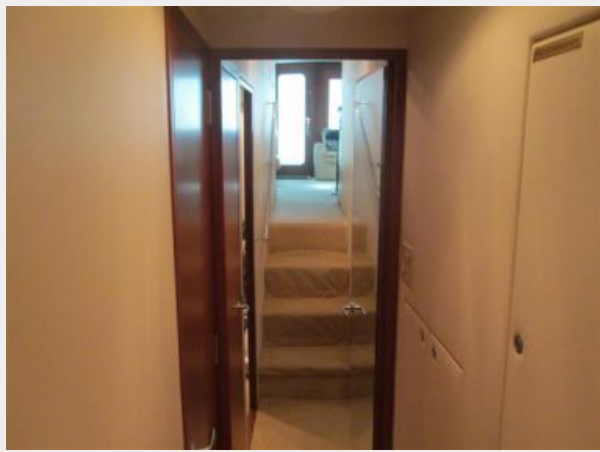
PHOTOS

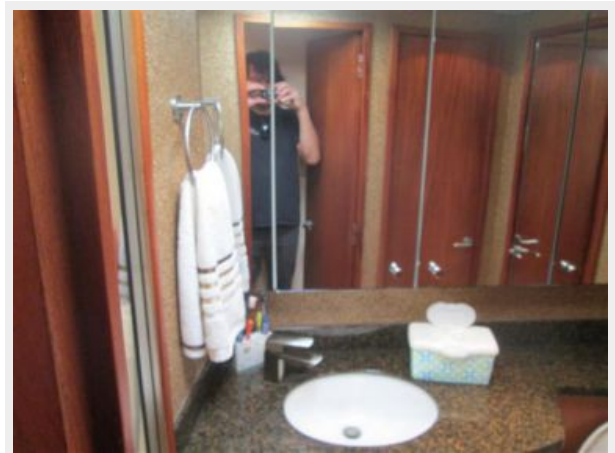
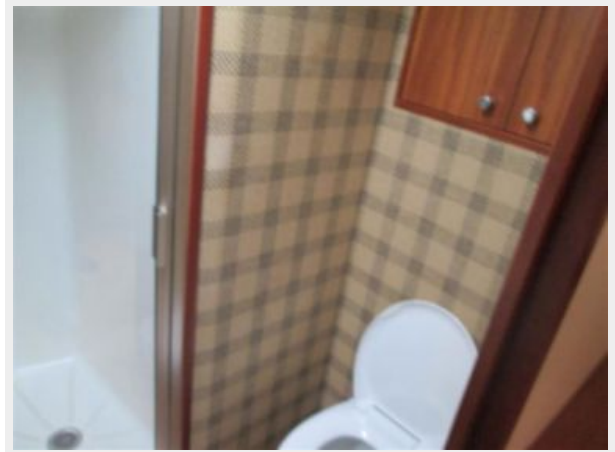


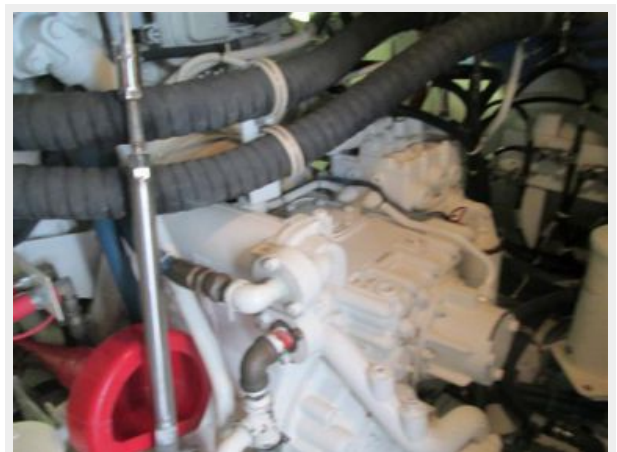
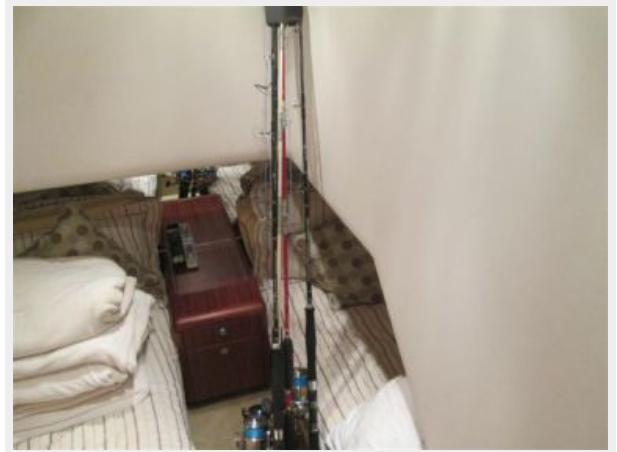
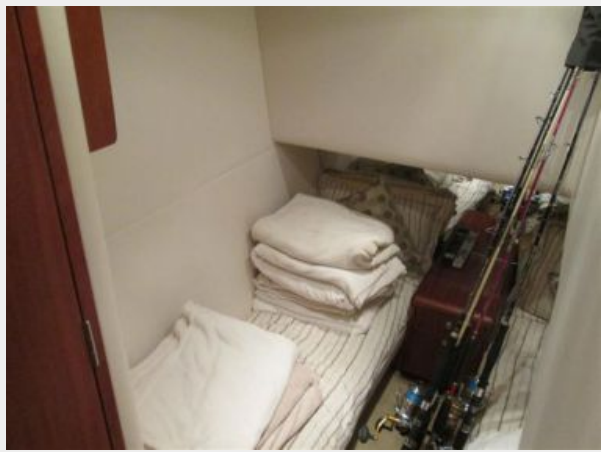


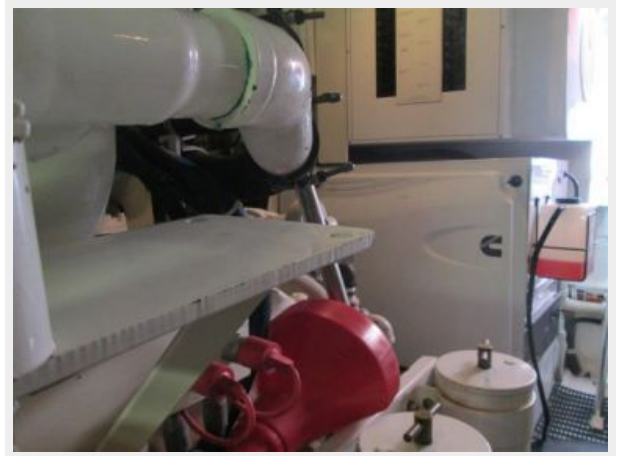












CONTACTS

Andrey Shestakov, leading yacht broker of the sales department of Shestakov Yacht Sales Inc. Shestakov Yacht Sales Inc., the official representative of the Miami/Fort Lauderdale FL headquarters.

Contact details

Email: andrey@shestakovyachtsales.com

Web: shestakovyachtsales.com/en/

Telephones

USA: +1(954)274-4435

Office hours

Monday – Saturday: **9:00 - 21:00** EDT

Sunday: **closed**

Address



Harbour Towne Marina, 850 NE 3rd St,
STE 213, Dania, FL 33004