

EMANUEL — HUNTER



Судостроитель: HUNTER

Год постройки: 1987

Модель: Крейсерская яхта

Цена: **ЦЕНА ЯХТЫ ПО ЗАПРОСУ**

Местонахождение: United States

Длина общая: 40' 0" (12.19m)

Ширина: 13' 5" (4.09m)

Макс. осадка: 6' 6" (1.98m)

Купить Emanuel — HUNTER а также выбрать подходящую вам яхту из нашего каталога яхт вам поможет опытный яхтенный брокер Андрей Шестаков. На сегодняшний день компания Shestakov Yacht Sales Inc. имеет большое количество яхт в собственном списке продаж, а также тесно сотрудничает со всеми крупными яхтенными производителями по всему миру.

Для того чтобы купить яхту Emanuel — HUNTER а также проконсультироваться по любому вопросу связанному с покупкой, продажей, чартером яхт позвоните по телефону **+7(918)465-66-44**.

ОГЛАВЛЕНИЕ

ОГЛАВЛЕНИЕ	2
ХАРАКТЕРИСТИКИ	3
Обзор	3
Основная информация	4
Размеры	4
Скорость, вместимость и масса	4
Размещение	4
Корпус и палуба	5
Информация о двигателе	5
ФОТОГРАФИИ	6
КОНТАКТЫ	13
Контактная информация	13
Телефоны	13
Время работы	13
Адрес	13

ХАРАКТЕРИСТИКИ

Обзор

Considering a Cruise to the Caribbean, Bahamas or Beyond? This Hunter Legend will take you there in comfort and with confidence! We've just listed this sloop-rigged, aft cockpit beauty. She's in good condition and totally equipped for immediate offshore cruising with live aboard comfort and luxury. With Emanuel's large aft stateroom with a centerline queen berth, comfortable guest v-berth, en-suite heads in both cabins, very functional galley and navigational station, she's ready for any adventure you may have in mind.

She is priced very attractively, has new standing and running rigging, chart plotter, VHF, battery charger, holding tank, toilets all in 2013. She also comes equipped with a 40-hp Yanmar diesel engine, solar panel, wind generator and many extras that make this a vessel a great value.

Please give us a call for more details or an appointment to view this beautiful sailing vessel. Boat Name Emanuel Specs Keel: Fin Dimensions LOA: 39 ft 7 in Beam: 13 ft 5 in LWL: 32 ft 6 in Maximum Draft: 6 ft 6 in Displacement: 17400 lbs Ballast: 7900 lbs Engines Engine 1: Engine Brand: Yanmar Year Built: 1987 Engine Model: 4JHE Engine Type: Inboard Engine/Fuel Type: Diesel Drive Type: Stern drive Engine Power: 40 HP Tanks Fresh Water Tanks: 1 (100 Gallons) Fuel Tanks: 1 Aluminum (40 Gallons) Holding Tanks: 2 Accommodations Number of single berths: 2 Number of double berths: 2 Number of cabins: 2 Number of heads: 2 Electronics Wind speed and direction - needs repair Radio Compass Navigation center Plotter - Standard Horizon Chart Plotter (new 2013) GPS VHF - Unidin UM525, with wireless remote (new 2013) TV set - Vizio 22 Radar Detector CD player Depthsounder Sails Furling genoa Battened mainsail Rigging Steering wheel Spinnaker pole - 3-1/2, 13'5 Inside Equipment Manual bilge pump Electric bilge pump Marine head - (2-new toilets 2013) Oven Battery charger - Xantrex True Charge 2 60A (new) Deep freezer Refrigerator Electrical Equipment Shore power inlet - 50A Shore Power and adapter (new 2013) Generator - Westerbek 3.5KW, (overheating, needs repair) Electrical Circuit: 110V Outside Equipment/Extras Cockpit shower Swimming ladder Cockpit table Wind generator - Ampair Solar panel - 1 small panel Cockpit cushions Outboard engine brackets Radar reflector Teak cockpit Covers Bimini Top Mainsail cover Spray hood

Accommodations

As you enter the salon through the companionway, the interior feel is warm and inviting with the Galley to starboard that includes a double stainless steel sink, three burner propane stove/oven, microwave, top loading and front load refrigerator. To port, directly across from the galley is a large head with access from the aft cabin. An aft facing navigation station is conveniently located to port and forward is a large settee to port and L-shaped settee starboard with a beautiful teak table that accommodates 6 guests for dinner or lowered to convert to a berth for two. Bookshelves and storage port and starboard with closed storage all around the salon.

Forward is a private V-berth guest cabin with hanging locker and private head. Aft is a queen sized master stateroom with storage under the berth and a large hanging locker to starboard.

Brokers Comments

“Emanuel” is a great value with many recent upgrades and in the perfect location for a Gulf Coast cruise to the Caribbean, Bahamas and beyond. She was outfitted and upgraded in 2013 for immediate offshore cruising with new standing and running rigging, chart plotter, VHF, batteries, battery charger, holding tank and toilets. First impression when you step on board is that the decks look like decks of a much newer vessel. Down below she is ready for some upgrades to the original soft goods, cabin soles and Nav station varnish. The two cabin, two head layout with large centerline aft queen provides the function and feel of a much larger yacht. Whether long term cruising or weekending you'll find "Emanuel" will fulfill your dreams.

Основная информация

Тип судна: Крейсерская яхта

Модельный год: 1987

Год постройки: 1987

Страна: United States

Размеры

Длина общая: 40' 0" (12.19m)

Длина по ватерлинии: 32' 6" (9.91m)

Ширина: 13' 5" (4.09m)

Макс. осадка: 6' 6" (1.98m)

Скорость, вместимость и масса

Водоизмещение: 17400 Pounds

Вместимость воды: 100 Gallons

Объем топливного бака: 40 Gallons

Размещение

Всего кают: 2

Корпус и палуба

Материал корпуса: Fiberglass

Информация о двигателе

Двигатели: 1

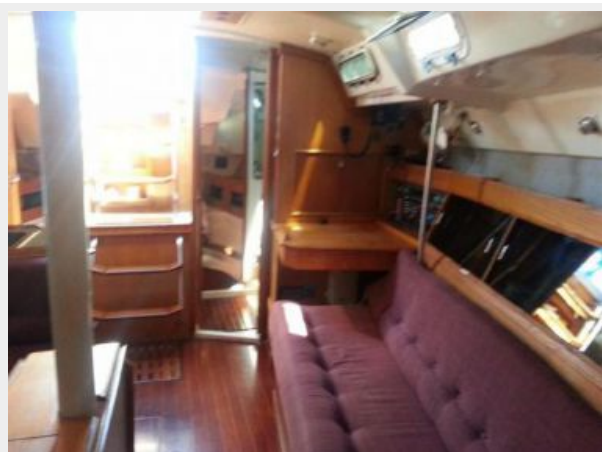
Производитель: Yanmar

Модель: 4JHE

Тип двигателя: Inboard

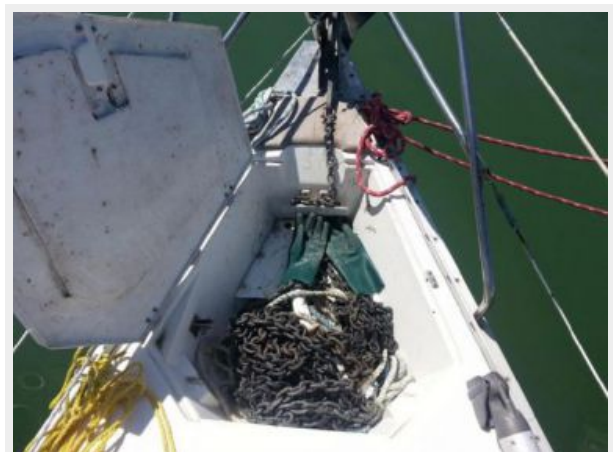
Тип топлива: Diesel

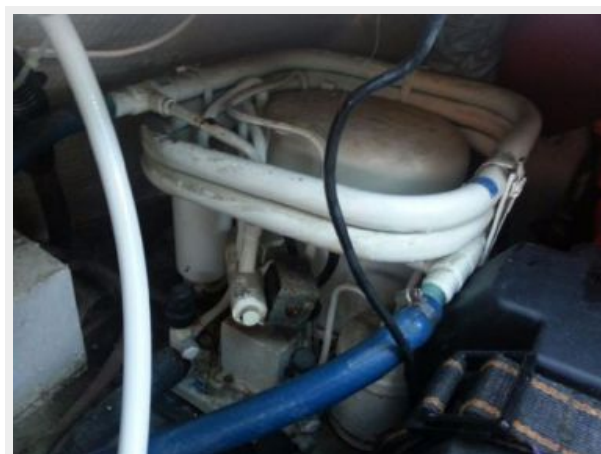
ФОТОГРАФИИ















КОНТАКТЫ

Андрей Шестаков (Andrey Shestakov) – ведущий яхтенный брокер отдела продаж яхт и судов компании Shestakov Yacht Sales Inc. Официальный представитель Shestakov Yacht Sales Inc. для русскоговорящих клиентов в центральном офисе компании в Майами/Форт Лодердейл/Флорида/США.

Контактная информация

Email: andrey@shestakovyachtsales.com

Web: shestakovyachtsales.com

Телефоны

Краснодарский край: **+7(918)465-66-44**

США, Майами, Флорида: **+1(954)274-4435**

Время работы

Понедельник – Суббота: **9:00 - 21:00**
EDT

Воскресенье: **Закрито**

Адрес



Harbour Towne Marina, 850 NE 3rd St,
STE 213, Dania, FL 33004