

26FT 1995 NORDIC TUGS 26 — NORDIC TUGS



Builder: NORDIC TUGS

Year Built: 1995

Model: Motor Yacht

Price: PRICE ON APPLICATION

Location: United States

LOA: 26' 0" (7.92m)

Beam: 9' 6" (2.90m)

Max Draft: 3' 3" (0.99m)

Cruise Speed: 7 Kts. (8 MPH)

Our experienced yacht broker, Andrey Shestakov, will help you choose and buy a yacht that best suits your needs 26ft 1995 Nordic Tugs 26 — NORDIC TUGS from our catalogue. Presently, at Shestakov Yacht Sales Inc., we have a wide variety of yachts available on our sale's list. We also work in close contact with all the big yacht manufacturers from all over the world.

If you would like to buy a yacht 26ft 1995 Nordic Tugs 26 — NORDIC TUGS or would like help answering any questions concerning purchasing, selling or chartering a yacht, please call +1(954)274-4435

TABLE OF CONTENTS

TABLE OF CONTENTS	2
SPECIFICATIONS	3
Basic Information	3
Dimensions	3
Speed, Capacities and Weight	3
Accommodations	3
Hull and Deck Information	3
Engine Information	4
DETAILED INFORMATION	5
Mechanical	5
Additional Information	5
Accommodations	5
Construction	5
Electronics	5
Exclusions	6
Disclaimer	6
PHOTOS	7
CONTACTS	16
Contact details	16
Telephones	16
Office hours	16
Address	16

SPECIFICATIONS

Basic Information

Category: Motor Yacht

Model Year: 1995

Year Built: 1995

Country: United States

Dimensions

LOA: 26' 0" (7.92m)

Beam: 9' 6" (2.90m)

Max Draft: 3' 3" (0.99m)

Clearance: 9' 8" (2.95m)

Speed, Capacities and Weight

Cruise Speed: 7 Kts. (8 MPH)

Displacement: 7500 Pounds

Water Capacity: 40 Gallons

Holding Tank: 20 Gallons

Fuel Capacity: 100 Gallons

Accommodations

Total Cabins: 2

Total Heads: 1

Hull and Deck Information

Hull Material: Fiberglass

Engine Information

Engines: 2

Manufacturer: Yanmar

Model: 4JH3-HTE

Engine Type: Inboard

Fuel Type: Diesel

DETAILED INFORMATION

Mechanical

- Yanmar Model 4JH3-HTE, 100 HP - 1050 Hours
- Cruises between 2500 to 2700 RPM Burning 1.5 - 2 GPH
- Phasor Generator replaced with 5.5 kW Yanmar Generator in 2012
- 120 hours on Yanmar generator
- New LastDrop Packing Gland installed in 2010
- New 1.5 inch shaft installed in 2010
- Yacht Systems AC and Heat - model R16CHW
- Dickson hydraulic stern thruster
- Air horn with compressor in stack

Additional Information

- 3 coats of bottom painted applied in January of 2015
- 6 inch stainless steel rudder extension - great control at slow speeds
- Hull compounded and waxed February of 2015
- Canvas covers for all windows and doors

Accommodations

- Sleeps 2 comfortably in V berth
- Booth style dinette in salon converts to berth
- TV in salon locker
- 1 bathroom with electric head
- Pilothouse is raised 2 steps from the salon with engine access below
- Shaded aft deck large enough for a couple of deck chairs

Construction

- Solid fiberglass construction
- Full keel
- Semi-displacement hull with rounded transom and 9'6" beam

Electronics

- C70 Chartplotter

- ST500 Auto Pilot

Exclusions

Owner's personal belongings.

Disclaimer

The Company offers the details of this vessel or yacht in good faith but cannot guarantee or warrant the accuracy of this information nor warrant the condition of the vessel. A buyer should instruct his representatives, agents, or his surveyors, to investigate such details as the buyer desires validated. This vessel or yacht is offered subject to prior sale, price change, or withdrawal without notice.

PHOTOS

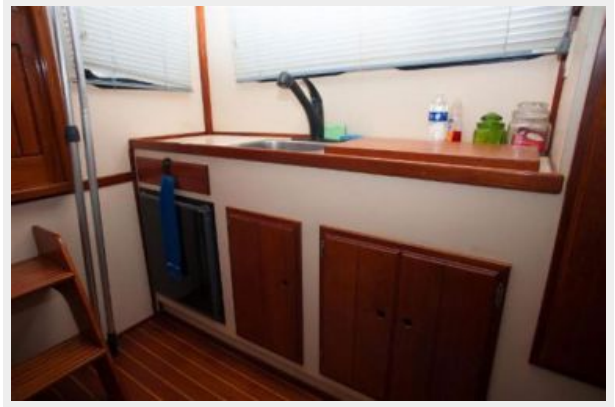


















CONTACTS

Andrey Shestakov, leading yacht broker of the sales department of Shestakov Yacht Sales Inc. Shestakov Yacht Sales Inc., the official representative of the Miami/Fort Lauderdale FL headquarters.

Contact details

Email: andrey@shestakovyachtsales.com

Web: shestakovyachtsales.com/en/

Telephones

USA: +1(954)274-4435

Office hours

Monday – Saturday: **9:00 - 21:00** EDT

Sunday: **closed**

Address



Harbour Towne Marina, 850 NE 3rd St,
STE 213, Dania, FL 33004