

BALSA — SEA RAY



Судостроитель: SEA RAY

Год постройки: 2000

Модель: Моторная яхта

Цена: **ЦЕНА ЯХТЫ ПО ЗАПРОСУ**

Местонахождение: United States

Длина общая: 45' 4" (13.82m)

Ширина: 14' 8" (4.47m)

Макс. осадка: 3' 7" (1.09m)

Купить **BALSA — SEA RAY** а также выбрать подходящую вам яхту из нашего каталога яхт вам поможет опытный яхтенный брокер Андрей Шестаков. На сегодняшний день компания **Shestakov Yacht Sales Inc.** имеет большое количество яхт в собственном списке продаж, а также тесно сотрудничает со всеми крупными яхтенными производителями по всему миру.

Для того чтобы купить яхту **BALSA — SEA RAY** а также проконсультироваться по любому вопросу связанному с покупкой, продажей, чартером яхт позвоните по телефону **+7(918)465-66-44**.

ОГЛАВЛЕНИЕ

ОГЛАВЛЕНИЕ	2
ХАРАКТЕРИСТИКИ	5
Обзор	5
Основная информация	5
Размеры	5
Скорость, вместимость и масса	5
Размещение	5
Корпус и палуба	5
Информация о двигателе	6
ПОДРОБНОЕ ОПИСАНИЕ	7
This vessel is LOADED WITH ALL OPTIONS!!! BRING OFFERS!!	7
Construction notes from Sea Ray	7
Vessel Walk Thru	7
Electronics & Navigation	8
Salon	8
Galley	9
Forward Stateroom	9
Forward Head	9
Mid-Cabin	10
Mid-Cabin Head	10
Mechanical	11
Manufacturer Provided Description	12
Исключения	12
Отказ от ответственности	12
ФОТОГРАФИИ	14
Profile	14
Port	14
Bow	14

Sunpad	14
Sunpad	14
Forward	14
Aft	15
Transom	15
Swim Platform	15
Helm Controls	15
Helm	15
Captain's Chair	15
Helm Seating	16
Helm	16
Helm Visor	16
Controls	16
Controls	16
Joystick	16
Controls	17
Radio	17
Speaker	17
Speaker	17
Main Deck	17
Main Deck	17
Main Deck	18
Main Deck	18
Man Deck	18
Main Deck TV	18
Main Deck TV	18
Sliding Companionway Door	18
Stairway	19
Galley	19

Galley	19
Salon	19
Salon	19
Salon	19
Salon	20
Salon	20
Salon TV	20
Master	20
Head	20
Master	20
Head	21
Interior Finish	21
Washer/Dryer	21
КОНТАКТЫ	22
Контактная информация	22
Телефоны	22
Время работы	22
Адрес	22

ХАРАКТЕРИСТИКИ

Обзор

Основная информация

Тип судна: Моторная яхта

Модельный год: 2000

Год постройки: 2000

Страна: United States

Размеры

Длина общая: 45' 4" (13.82m)

Ширина: 14' 8" (4.47m)

Макс. осадка: 3' 7" (1.09m)

Скорость, вместимость и масса

Водоизмещение: 28000 Pounds

Вместимость воды: 100 Gallons

Вместимость сточного бака: 60 Gallons

Объем топливного бака: 400 Gallons

Размещение

Всего кают: 2

Всего коек: 6

Всего ком. состава: 2

Корпус и палуба

Материал корпуса: Fiberglass

Комплектация корпуса: Deep Vee

Информация о двигателе

Двигатели: 2

Производитель: Cummins

Модель: 6СТА 8.3М

Тип двигателя: Inboard

Тип топлива: Diesel

ПОДРОБНОЕ ОПИСАНИЕ

This vessel is LOADED WITH ALL OPTIONS!!! BRING OFFERS!!

KEY FEATURES

- ***Hydraulic Swim Platform Lift
- ***Bow Thruster
- ***Cockpit Air Conditioning
- ***Cherrywood Interior not Maple Yuck!!!
- ***New Salon Flat screen TV
- ***Cockpit TV
- ***New Cockpit carpet
- ***Camper top
- ***Kept Undercover

Construction notes from Sea Ray

Sea Ray Boats are of conventional construction built with modified polyester resin and E-glass fiberglass cloth and mat. The hull of the 460 is fully cored from the keel up and reinforced with a marine plywood stringer system encapsulated in fiberglass. The deck is also a fiberglass laminate with coring used to stiffen the fore deck and cockpit sole. The hull to deck joint is a "shoe box" style that is chemically and mechanically fastened together. The exterior finish is in a premium grade gel coat.

Vessel Walk Thru

The cabin is entered to the left of the helm via a sliding companionway door. Descending three steps, the L-shaped galley will be immediately to port and features hide-away refrigerator/freezer, recessed cook-top and plenty of storage. Opposite on starboard is the main salon area with built-in settee and club chair. The settee does convert to a double berth and there is a pedestal table with bi-fold top that can act as a dining table. Moving towards the bow, you will enter the master stateroom which features a centerline island pedestal berth, numerous storage lockers and private access to the master head. The master head is located on port, just forward of the galley

area and features a stall shower and day access from the salon. The guest stateroom is located at the aft end of the salon and has a large settee that pulls out to make a double berth. This allows the area to become an extension of the salon as a seating area when not in use as a stateroom. The space offers a good storage, a hide-away washer/dryer and a small private head. The interior has a blond wood finish that creates a bright attractive space for all. There is wall to wall carpeting and a removable carpet cover that can be easily cleaned.

Electronics & Navigation

- Raytheon Raymarine Pathfinder RL80C Radar/Plotter w/Open Array Antenna
- Raytheon Raymarine Ray Pilot 650 Autopilot
- Raytheon Raymarine Tri-Data (Depth/Speed/Log)
- Raytheon Raymarine Nav 398 GPS
- Raytheon Ray 220 VHF Radio

Salon

- Ultraleather Settee w/Electrically Operated Slide-Out Berth
- Ultraleather Reclining Club Chair
- Hi-Lo Dinning Table w/ (2) Folding Leafs & Corian Top
- Clear Maple Wood Work
- Sony 40" Flat Panel TV
- Toshiba DVD Player
- Reverse Cycle Air Conditioning System
- Built-In Table w/Storage Between Settee & Club Chair w/Corian Top
- (2) Overhead Storage Lockers
- Opening Hull Side Port w/Privacy Curtain
- Large Accent Mirror
- Electrical Panel Access
- Overhead Opening Hatch w/Ocean Air Screen & Shade
- Access To Fwd Head From Main Salon
- 12v Lighting, Direct & In-Direct
- 12v Courtesy Lighting
- 120v GFCI Outlets
- Bose AM/FM/CD Stereo System
- Wall To Wall Carpeting w/Carpet Runner
- CO Detector
- SS Hand Holds
- Accent Pillows
- Central Vacuum Cleaning System
- In-Sole Storage
- Fire Extinguisher

- Recessed AC Electrical Panel

Galley

- L-Shaped Galley
- Corian Countertop w/Corian Sink & Cover
- Faucet w/Sprayer
- Hide-Away Norcold Refrigerator/Freeze AC/DC (New)
- Concealed Kenyon 3 Burner Glass Cooktop w/Corian Cover
- Concealed Coffeemaker
- Concealed Share Carousel Microwave Oven
- 12v Vent Fan
- Built-In Trash Receptacle
- (2) Storage Cabinets & (4) Drawers Beneath Counter
- (3) Storage Lockers Above Counter
- 12v Lighting
- 120v GFCI Outlets

Forward Stateroom

- Island Marine Queen Berth w/ Innerspring Mattress, Comforter & Pillows
- Storage w/Gas Assist Shocks Beneath Berth, Plus Drawer
- Port & Stbd Built-in Steps Into Berth
- Sliding Pocket Privacy Door w/Mirror
- Recessed Panasonic 13" TV
- Hanging Lockers Port & Stbd w/Lights & Mirrors
- Reverse Cycle Air Conditioning
- TV
- Vanity w/Storage & Stool
- 12v Lighting
- 120v GFCI Outlets
- (4) In-Hull Opening Port Lights w/Privacy Curtains
- Overhead Hatch w/Ocean Air Shade & Screen
- Clear Maple Wood Work
- Carpeting w/Cover
- Private Access To Forward Head
- Fire Extinguisher

Forward Head

- Molded Fiberglass Head Liner

- Stall Show w/Acrylic Door & Molded-In Seat
- Corian Countertop w/Molded-In Sink & Faucet
- Mirrored Medicine Cabinet
- Vac U Flush Head System
- Hinged Seat/Cover Over Head
- Shower Sump
- SS Hand Hold
- Holding Tank Gauge
- Vent Fan
- 12v Lighting
- 120v GFCI Outlets
- Storage Locker Under Sink
- Dual Head Access
- Clothes Hook

Mid-Cabin

- Ultraleather Settee, Converts Electrically Into Double Berth
- Sliding Privacy Door
- Reverse Cycle Air Conditioning System
- Private Head Access
- Large Mirror
- Hanging Locker w/Light, Cedar Lining & Full Length Mirror
- (2) Opening In-Hull SS Ports w/Privacy Curtains
- Panasonic 13" TV
- Storage Lockers
- Recessed Splendide Washer/Dryer
- (2) Reading Lights
- Accent Pillows
- Carpeting w/Cover

Mid-Cabin Head

- Molded Fiberglass Head Liner
- Corian Countertop w/Molded-In Sink & Faucet
- Mirrored Medicine Cabinet
- Vac U Flush Head System
- Hinged Seat/Cover Over Head
- Shower Curtain
- Pull-Out Shower Sprayer
- Shower Sump
- SS Hand Hold

- Holding Tank Gauge
- Vent Fan
- 12v Lighting
- 120v GFCI Outlets
- Storage Locker Under Sink
- Clothes Hook
- (1) Opening Port Light

Mechanical

- Twin Cummins 450C / 430Hp Diesel Engines
- Westerbeke 8 KW Diesel Generator
- Vetus Bow Thruster
- ZF V-Drive Gear Boxes
- Walker Air Sep System On Main Engines
- Underwater Engine Exhaust
- Dripless Shaft Logs
- Dual Racor Fuel Filters w/Vacuum Gauges For Main Engines
- Single Racor Fuel Filter For Generator
- Glenndinning Cable Master Shore Power Cable Retractor
- Glenndinning Engine Synchronizer
- Perko Bronze Sea Water Strainers
- Perko Bronze Thru Hulls w/Ball Valves
- Reverso Oil Change System For Main Engines, Transmissions & Generator
- Sea Star Hydraulic Steering
- Bennett Hydraulic Trim Tab System
- Dual Vac U Flush Head System
- Overboard Head Discharge Pump
- ProMariner ProNautic 12-50 P Battery Charger (New)
- Engine Room Blower
- Engine Room Lighting
- 120v GFCI Outlet
- Engine Room Fresh Water Washdown
- Dual Aluminum Fuel Tanks
- Dual Plastic Holding Tanks
- Single Aluminum Water Tank
- Sea Fire Halon 1301 Automatic Fire Extinguishing System
- Thermal & Acoustical Insulation
- Barry Engine Mounts
- (4) Bilge Pumps w/Auto & Manual Operation
- Dual 12v Fresh Water System Pumps

Manufacturer Provided Description

Extended cruising not only requires a boat that was built for the long haul, but a boat that was built to make the trip completely enjoyable. That's why Sea Ray created the 460 Sundancer. The cockpit of the 460 Sundancer creates a relaxing atmosphere with a custom slide and swivel helm seat with a flip-up thigh-rise for the captain, and a Euro-style companion bench seat. The ergonomically designed control station not only puts the latest Raytheon electronics and Sea Ray's backlit instrumentation close at hand, it also reflects Sea Ray's dedication to style with a tan dash gelcoat and high-gloss burl wood panels. There's even a digital LCD systems monitor for engine diagnostics and pump monitoring. Passengers have plenty of room to enjoy the sun with spacious U-shaped cockpit seating (with an electrically actuated retractable sunpad), and a movable cockpit table. Carefully planned details like a snap-in carpet liner, self-bailing fiberglass cockpit liner, a wetbar in the side panel to port, and a Clarion AM-FM digital cassette stereo with six-disc CD changer, subwoofer, four speakers, and a cockpit remote control make the 460 Sundancer ideal for quality entertaining. The oversized swim platform is easily accessed through a transom door. When it comes to storage, the 460 Sundancer has all the space needed for long excursions, including aft wall fender storage which keeps docking equipment neatly tucked away. Additional gear can also be stowed in the seats and side storage areas in the cockpit. The cabin of the Sea Ray 460 Sundancer has a comfortable salon with an electric sleeper sofa, movable dining table, and an entertainment center featuring a TV - VCR - radio combination, and Clarion AM-FM digital cassette and single CD stereo system with six-disc CD changer, amplifier, and four speakers. A washer and dryer combination has been included in the mid stateroom for at-home convenience. Complementing the decor of the room are granite-look countertops, handcrafted wood trim, and lush marine-grade carpeting. The galley comes complete with everything necessary for long trips, including a recessed three-burner cooktop, refrigerator and freezer, microwave oven, even a Spacemaker coffee maker. Owners and their guests can retreat to their own private quarters on the Sea Ray 460 Sundancer, including a forward stateroom with a full-size bed, cedar-lined hanging lockers, vanity, and sliding privacy door with full-length mirror. In the mid stateroom, a comfortable sofa converts to a double bed by simply flipping a switch. There are two private head areas featuring a VacuFlush head with shower, plus both staterooms have their own entertainment centers with TV - VCR - radio combinations. The 460 Sundancer is powered by twin 430 horsepower Cummins V-drives with a patented underwater exhaust system. The 460 Sundancer has durable underwater gear including a unique bonding system, manganese-bronze rudders and struts, seacocks on all fittings, and dripless shaft logs with an extra seal carrier kit.

Исключения

При продаже яхты исключаются личные вещи владельца.

Отказ от ответственности

Компания предоставляет описание судна или яхты добросовестно, но не может гарантировать точность этой информации, а также не ручается за техническое состояние. Покупатель должен проинструктировать своих агентов или оценщиков исследовать представленную информацию более подробно, по собственному желанию. Продажа судна или яхты, изменение цены или снятие с продажи будет происходить без предварительного уведомления.

ФОТОГРАФИИ

Profile



Port



Bow



Sunpad



Sunpad



Forward



Aft



Transom



Swim Platform



Helm Controls



Helm



Captain's Chair



Helm Seating



Helm



Helm Visor



Controls



Controls



Joystick



Controls



Radio



Speaker



Speaker



Main Deck



Main Deck



Main Deck



Main Deck



Main Deck



Main Deck TV



Main Deck TV



Sliding Companionway Door



Stairway



Galley



Galley



Salon



Salon



Salon



Salon



Salon



Salon TV



Master



Master



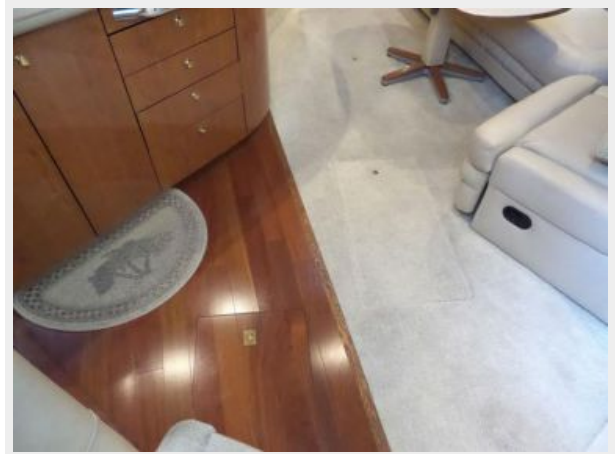
Head



Head



Interior Finish



Washer/Dryer



КОНТАКТЫ

Андрей Шестаков (Andrey Shestakov) – ведущий яхтенный брокер отдела продаж яхт и судов компании Shestakov Yacht Sales Inc. Официальный представитель Shestakov Yacht Sales Inc. для русскоговорящих клиентов в центральном офисе компании в Майами/Форт Лодердейл/Флорида/США.

Контактная информация

Email: andrey@shestakovyachtsales.com

Web: shestakovyachtsales.com

Телефоны

Краснодарский край: **+7(918)465-66-44**

США, Майами, Флорида: **+1(954)274-4435**

Время работы

Понедельник – Суббота: **9:00 - 21:00**
EDT

Воскресенье: **Закрето**

Адрес



Harbour Towne Marina, 850 NE 3rd St,
STE 213, Dania, FL 33004