

## PJ PARTY



**Year Built:** 2007

**Model:** Cruising Yacht

**Price:** PRICE ON APPLICATION

**LOA:** 37' (11.28mm)

**Beam:** 13

**Max Draft:** 3' (0.91mm)

**Cruise Speed:** 18 Knots Kts. (21 MPH)

**Max Speed:** 24 Knots Kts. (28 MPH)

Our experienced yacht broker, Andrey Shestakov, will help you choose and buy a yacht that best suits your needs **PJ PARTY** — n/a from our catalogue. Presently, at Shestakov Yacht Sales Inc., we have a wide variety of yachts available on our sale's list. We also work in close contact with all the big yacht manufacturers from all over the world.

If you would like to buy a yacht **PJ PARTY** — n/a or would like help answering any questions concerning purchasing, selling or chartering a yacht, please call **+1(954)274-4435**

# TABLE OF CONTENTS

TABLE OF CONTENTS	2
SPECIFICATIONS	5
Basic Information	5
Dimensions	5
Speed, Capacities and Weight	5
Accommodations	5
Hull and Deck Information	5
Engine Information	6
PHOTOS	7
Port View with extended swim platform	7
Port View	7
Bow View coming into port w/walk-thru windshield	7
Starboard Stern View	7
Bow View on lift	8
Lift kept	8
Companionway to Cabin areas	8
Port View on lift	8
Spacious Main Salon with beautiful cherrywood interior & tan leather upholstery	9
Main Salon looking aft to companionway	9
Aft Settee area that converts to a double berth w/privacy curtain	9
Forward Private Stateroom with island berth	9
Forward Stateroom to starboard w/hanging lockers, port & starboard	9
Head with sink and VacuFlush Toilet	9
Separate Stand-up Shower Stall	10
U-Shaped Galley to Port	10
U-Shaped Dinette to Starboard	10
Tappan Microwave Oven	10
(2) Burner Electric Stove	10

Sole TV in Galley/Main Salon	10
Galley Stainless Steel Sink w/Single faucet & Corian countertops	11
Bridgedeck looking forward from Cockpit	11
Bridgedeck helm & electronics	11
Raymarine C80 Plotter/Radar	11
Raymarine ST6002+ Autopilot	11
Raymarine Ray55 VHF/distress	11
Ritchie Compass	12
Closed Array Raymarine Radar Do	12
Clarion CD/AM/FM/Sirius/iPod Stereo	12
Sole CD Player	12
Clarion 6-Disc CD Changer	12
Clarion Stereo Remote at Helm	12
Toshiba TV/DVD in Forward Stateroom	13
Clarion Marine Speakers	13
Intelli-Power Marine Battery Charger/Inverter	13
Onan 6.5KW Generator w/323 hours & sound shield	13
Engine Room Electric Panel w/switches for Generator/Engine/House Batteries	13
Entrance to raised Bridgedeck w/chaise lounge to port & double helm seats	13
Faria Engine Hr Meters showing 296 hrs on port & 294 hrs on starboard	14
Faria gauges at Helm	14
Electric Engine Compartment Hatch in Cockpit Sole	14
Power Steering W/Tilt Helm	14
Engine Compartment with great access to engines, genset, all systems	14
Starboard Yanmar 6LPA-STP (315HP) Engine w/296 hrs	14
Port Yanmar 6LPA-STP (315HP) Engine w/294 hrs	15
Racor Fuel Filters	15
Fireboy Fire Extinguisher System	15
Cockpit Seating to Starboard showing forward entrance to Bridgedeck & Cabin	15

---

Bridgedeck looking aft showing great visibility	15
Large Cockpit looking Aft	15
U-Shaped Cockpit Seating to Starboard w/Cocktail Table	16
Cockpit Wet Bar to Port	16
Walk-thru Windshield w/molded-in steps and SS railing for safety	16
Wet Bar w/Refrigerator/Ice Maker/Sink/Faucet	16
Maxwell Windlass & Anchor Locker w/windlass foot pedals	16
Bow Pulpit with high SS railings	16
Cockpit Hot/Cold Shower Faucet	17
Large Transom Door fits out of the way	17
Concealed swim boarding ladder	17
Extended Swim Platform with integrated storage lockers for lines & fenders	17
Floor Plan and Layout	17
<b>CONTACTS</b>	<b>18</b>
Contact details	18
Telephones	18
Office hours	18
Address	18

---

# SPECIFICATIONS

---

## Basic Information

---

**Category:** Cruising Yacht

**Sub Category:** Express

**Model Year:** 2007

**Year Built:** 2007

## Dimensions

---

**LOA:** 37' (11.28mm)

**Beam:** 13

**Max Draft:** 3' (0.91mm)

## Speed, Capacities and Weight

---

**Cruise Speed:** 18 Knots Kts. (21 MPH)

**Max Speed:** 24 Knots Kts. (28 MPH)

**Water Capacity:** 70 Gallons

**Holding Tank:** 55 Gal Gallons

**Fuel Capacity:** 300 Gal Gallons

## Accommodations

---

**Total Cabins:** 2

**Total Berths:** 2

**Sleeps:** 4

**Total Heads:** 1

## Hull and Deck Information

---

**Hull Material:** Fiberglass

**Deck Material:** Fiberglass

**Hull Configuration:** Deep Vee

**Hull Color:** DARK BLUE

---

## Engine Information

---

**Engines:** 2

**Manufacturer:** Yanmar

**Engine Type:** Inboard

**Fuel Type:** Diesel

# PHOTOS

**Port View**



**Port View with extended swim platform**



**Bow View coming into port w/walk-thru windshield**



**Starboard Stern View**





**Lift kept**



**Bow View on lift**



**Companionway to Cabin areas**

**Port View on lift**





**Spacious Main Salon with beautiful cherrywood interior & tan leather upholstery**



**Main Salon looking aft to companionway**



**Aft Settee area that converts to a double berth w/privacy curtain**



**Forward Private Stateroom with island berth**



**Forward Stateroom to starboard w/hanging lockers, port & starboard**



**Head with sink and VacuFlush Toilet**



**Separate Stand-up Shower Stall**



**U-Shaped Galley to Port**



**U-Shaped Dinette to Starboard**



**Tappan Microwave Oven**



**(2) Burner Electric Stove**



**Sole TV in Galley/Main Salon**





**Galley Stainless Steel Sink w/Single faucet & Corian countertops**



**Bridgedeck looking forward from Cockpit**



**Bridgedeck helm & electronics**



**Raymarine C80 Plotter/Radar**



**Raymarine ST6002+ Autopilot**



**Raymarine Ray55 VHF/distress**



**Ritchie Compass**



**Closed Array Raymarine Radar Do**



**Clarion CD/AM/FM/Sirius/iPod Stereo**



**Sole CD Player**



**Clarion 6-Disc CD Changer**



**Clarion Stereo Remote at Helm**





**Toshiba TV/DVD in Forward Stateroom**



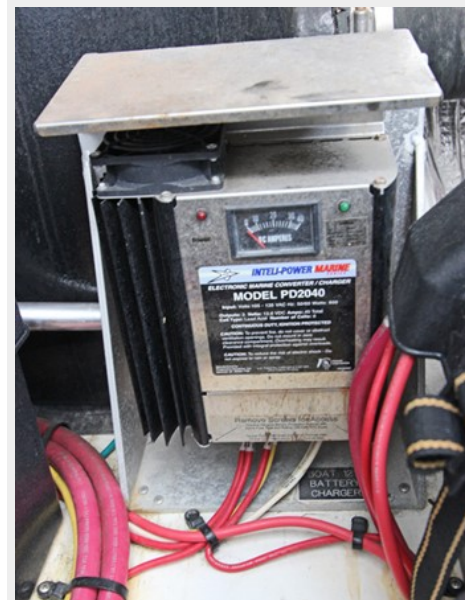
**Clarion Marine Speakers**



**Onan 6.5KW Generator w/323 hours & sound shield**



**Intelli-Power Marine Battery Charger/Inverter**



**Engine Room Electric Panel w/switches for Generator/Engine/House Batteries**



**Entrance to raised Bridgedeck w/chaire lounge to port & double helm seats**



**Faria gauges at Helm**



**Faria Engine Hr Meters showing 296 hrs on port & 294 hrs on starboard**



**Power Steering W/Tilt Helm**



**Electric Engine Compartment Hatch in Cockpit Sole**



**Engine Compartment with great access to engines, genset, all systems**



**Starboard Yanmar 6LPA-STP (315HP) Engine w/296 hrs**

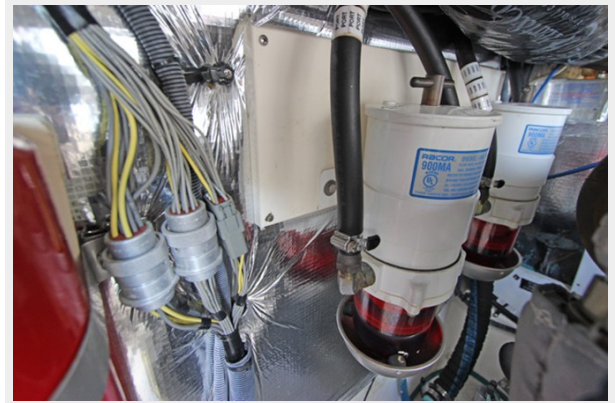




**Port Yanmar 6LPA-STP (315HP) Engine  
w/294 hrs**



**Racor Fuel Filters**



**Fireboy Fire Extinguisher System**



**Cockpit Seating to Starboard showing  
forward entrance to Bridgedeck & Cabin**



**Bridgedeck looking aft showing great  
visibility**



**Large Cockpit looking Aft**





**U-Shaped Cockpit Seating to Starboard w/Cocktail Table**



**Cockpit Wet Bar to Port**



**Walk-thru Windshield w/molded-in steps and SS railing for safety**



**Wet Bar w/Refrigerator/Ice Maker/Sink/Faucet**



**Bow Pulpit with high SS railings**



**Maxwell Windlass & Anchor Locker w/windlass foot pedals**



**Cockpit Hot/Cold Shower Faucet**



**Large Transom Door fits out of the way**



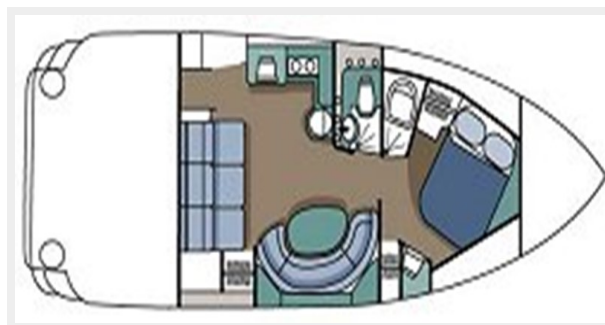
**Extended Swim Platform with integrated storage lockers for lines & fenders**



**Concealed swim boarding ladder**



**Floor Plan and Layout**



---

# CONTACTS

---

Andrey Shestakov, leading yacht broker of the sales department of Shestakov Yacht Sales Inc. Shestakov Yacht Sales Inc., the official representative of the Miami/Fort Lauderdale FL headquarters.

---

## Contact details

---

Email: [andrey@shestakovyachtsales.com](mailto:andrey@shestakovyachtsales.com)

Web: [shestakovyachtsales.com/en/](http://shestakovyachtsales.com/en/)

---

## Telephones

---

USA: +1(954)274-4435

---

## Office hours

---

Monday – Saturday: **9:00 - 21:00** EDT

Sunday: **closed**

---

## Address

---



Harbour Towne Marina, 850 NE 3rd St,  
STE 213, Dania, FL 33004