

68 PILOTHOUSE MOTORYACHT — LAZZARA



Builder: LAZZARA

Year Built: 2005

Model: Motor Yacht

Price: PRICE ON APPLICATION

Location: Turkey

LOA: 68' 0" (20.73m)

Beam: 18' 2" (5.54m)

Max Draft: 4' 2" (1.27m)

Cruise Speed: 28 Kts. (32 MPH)

Max Speed: 32 Kts. (37 MPH)

Our experienced yacht broker, Andrey Shestakov, will help you choose and buy a yacht that best suits your needs 68 Pilothouse Motoryacht — LAZZARA from our catalogue. Presently, at Shestakov Yacht Sales Inc., we have a wide variety of yachts available on our sale's list. We also work in close contact with all the big yacht manufacturers from all over the world.

If you would like to buy a yacht 68 Pilothouse Motoryacht — LAZZARA or would like help answering any questions concerning purchasing, selling or chartering a yacht, please call **+1(954)274-4435**

TABLE OF CONTENTS

TABLE OF CONTENTS	2
SPECIFICATIONS	4
Basic Information	4
Dimensions	4
Speed, Capacities and Weight	4
Hull and Deck Information	4
Engine Information	4
PHOTOS	5
Recently painted hull	5
Port side view	5
Starboard quarter	5
Starboard aft	5
Port aft with new hull paint	5
Spiral stairway to staterooms	5
Main salon aft	6
Master stateroom	6
Full size galley	6
Lower helm station	6
Lower helm station	6
1015hp Caterpillar C-18 diesels	6
Flybridge forward before teak decking	7
Flybridge aft before teak decking	7
New foredeck sun lounge w/custom table	7
New bridge deck sun lounge	7
Master head vanity	7
Port side VIP Stateroom	7
Night time glow	8
Main salon fwd	8

New upholstery	8
New carpeting	8
Captains Stateroom and office	8
Custom carpeting	8
Teak side decks	9
CONTACTS	10
Contact details	10
Telephones	10
Office hours	10
Address	10

SPECIFICATIONS

Basic Information

Category: Motor Yacht

Sub Category: Flybridge

Model Year: 2005

Year Built: 2005

Country: Turkey

Dimensions

LOA: 68' 0" (20.73m)

Beam: 18' 2" (5.54m)

Max Draft: 4' 2" (1.27m)

Speed, Capacities and Weight

Cruise Speed: 28 Kts. (32 MPH)

Max Speed: 32 Kts. (37 MPH)

Water Capacity: 300 Gallons

Holding Tank: 100 Gallons

Hull and Deck Information

Hull Material: Fiberglass

Engine Information

Engines: 2

Manufacturer: Caterpillar

Model: C-18

Engine Type: Inboard

Fuel Type: Diesel

PHOTOS

Port side view



Recently painted hull



Starboard quarter



Starboard aft



Port aft with new hull paint



Spiral stairway to staterooms



Main salon aft



Master stateroom



Lower helm station



Full size galley



Lower helm station



1015hp Caterpillar C-18 diesels



Flybridge forward before teak decking



Flybridge aft before teak decking



New foredeck sun lounge w/custom table



New bridge deck sun lounge



Master head vanity



Port side VIP Stateroom



Night time glow



Main salon fwd



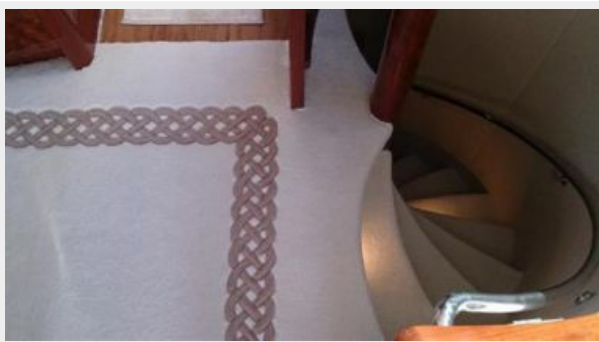
New upholstery



New carpeting



Custom carpeting



Captains Stateroom and office



Teak side decks



CONTACTS

Andrey Shestakov, leading yacht broker of the sales department of Shestakov Yacht Sales Inc. Shestakov Yacht Sales Inc., the official representative of the Miami/Fort Lauderdale FL headquarters.

Contact details

Email: andrey@shestakovyachtsales.com

Web: shestakovyachtsales.com/en/

Telephones

USA: +1(954)274-4435

Office hours

Monday – Saturday: **9:00 - 21:00** EDT

Sunday: **closed**

Address



Harbour Towne Marina, 850 NE 3rd St,
STE 213, Dania, FL 33004