

GRAND BAROSSA — AZIMUT



Builder: AZIMUT

Year Built: 1999

Model: Motor Yacht

Price: PRICE ON APPLICATION

Location: United States

LOA: 100' 0" (30.48m)

Beam: 21' 9" (6.63m)

Max Draft: 6' 4" (1.93m)

Cruise Speed: 16 Kts. (18 MPH)

Max Speed: 23 Kts. (26 MPH)

Our experienced yacht broker, Andrey Shestakov, will help you choose and buy a yacht that best suits your needs **GRAND BAROSSA — AZIMUT** from our catalogue. Presently, at Shestakov Yacht Sales Inc., we have a wide variety of yachts available on our sale's list. We also work in close contact with all the big yacht manufacturers from all over the world.

If you would like to buy a yacht **GRAND BAROSSA — AZIMUT** or would like help answering any questions concerning purchasing, selling or chartering a yacht, please call **+1(954)274-4435**

TABLE OF CONTENTS

TABLE OF CONTENTS	2
SPECIFICATIONS	5
Overview	5
Basic Information	6
Dimensions	6
Speed, Capacities and Weight	6
Accommodations	6
Hull and Deck Information	7
Engine Information	7
DETAILED INFORMATION	8
Highlights	8
Salon	8
Galley/Laundry	8
Master Stateroom (Lower deck)	9
Twin Guest Staterooms 1 & 2	9
VIP Stateroom 1	9
2nd Master Stateroom	9
Flybridge	10
Garage / Toys	10
Electronics	10
Engine Room / Mechanical	11
Pilothouse	11
Main Aft Deck	12
Forward Deck	12
Powder Room	12
Exclusions	12
Disclaimer	12
PHOTOS	13

Profile 2	13
Aussie Beach 1	13
Forward Deck	13
Aussie Beach 2	13
Toys	13
Fly Bridge A	13
Fly Bridge B	14
Fly Bridge C	14
Aft Deck Table	14
Bar	14
Salon Dinning Table	14
Main Salon	14
Day Head	15
Pilot House	15
Master Stateroom	15
Master Head	15
Twin Stateroom Port Side	15
Twin Stateroom Stbd Side	15
Forward VIP Stateroom	16
Forward VIP Head	16
VIP Stateroom	16
VIP Head	16
Bottom Paint Job	16
Engine Room	16
PropSpeed on Props, Shafts and Rudders	17
GA	17
CONTACTS	18
Contact details	18
Telephones	18

Office hours	18
Address	18

SPECIFICATIONS

Overview

GRAND BAROSSA VIP Azimut 100 is one of the only two 5 VIP stateroom yachts ever built. She is the the most stunning Azimut Jumbo delivered to America. GRAND BAROSSA has been refurbished with new luxurious furnishings and each cabin is tastefully decorated with all the comforts and amenities to make your stay truly relaxing and enjoyable. One of the most notable features are her 3 VIP cabins. One being on the Main Deck (2nd Master Stateroom) with wheel chair and full handicapped access. 2 Queens and a Twin down below. The yacht features FULL walk around decks and a very spacious, relaxing "toy free" sun deck. GRAND BAROSSA is truly the best value under the sun for 10 guests and is ideally suited for families. She was built with full American compatibility in mind. An American Captain spent a year in Viareggio, Italy following the build. She has an Atlas shore converter, American A/C, American Water maker etc. This is a big advantage as spare parts are easy to find anywhere. GRAND BAROSSA is pure classical elegance and sophistication but with a relaxed formality. The hand rubbed cherry wood throughout the yacht is immaculate. The bathrooms and internals look like new showing the very low usage of the yacht. Lalique door handles and fittings throughout. When boarding GRAND BAROSSA and go through the yacht, there are no odors at all. GRAND BAROSSA from 2001-2013 had only 150 hour usage but had an open checkbook maintenance scheduled program. The main engines have only 2650hrs. She was meticulously maintained full time by the same Captain for over 12 years. Mechanically the yacht has had a rigorous maintenance schedule on A/C filters, water filters, sea strainers cleaning, pumps, hydraulics etc. **2015 Updates** New Marble floor in the Salon Overhaul of freshwater System Teak decks re-seamed and sanded in areas A complete compound and wax from the flybridge to water-line New house batteries Complete bottom job completed October 2015 All new Zincs Propellers reconditioned and prop speed **Recent Work Done** New chiller- Dometic in March 2014 New transom extension to provide extra lift, a new thing all Azimuts use today Bow thruster fully rebuilt in December 2014 All toilet pumps replaced in December 2014 New membranes for watermakers in December 2014 New anchor windlass motor in December 2014 Sea cooler serviced and cleaned in December 2014 All canvas new in 2013 New black water pumps in 2013 Yacht paint job in 2011 with Awl grip Yacht waxed and polished every 6 months New life rafts in December 2014 (only need to be serviced every 3 years) All fire fighting system + safety equipment serviced in December 2014 New Epirbs in December 2014 New TV mount and TV for Fly Bridge in August 2014 3 new ice makers in December 2014 New mattresses + crew- Swedish Suede top quality throughout 2012 New carpet throughout 2012 All new flat TVs throughout except 2nd Master Stateroom All rooms with new Blu-Ray players, ipod stations in July 2014 All wifi compatible The galley has been upgraded with extra storage and numerous items that can cater for 12 guests at the highest level. New marble floors in the bar. GRAND BAROSSA passed The Marshall Islands enhanced survey in December 2014, valid for 5 years/ with annual update. She truly is a "Turn Key Yacht" the new owner could literally sign the papers and go cruise the islands next week!

Basic Information

Category: Motor Yacht	Model Year: 1999
Year Built: 1999	Refit Year: 2014
Country: United States	Registration #: 70959
Vessel Top: Open W/Bimini Top	Fly Bridge: Yes

Dimensions

LOA: 100' 0" (30.48m)	LWL: 87' 7" (26.70m)
Beam: 21' 9" (6.63m)	Max Draft: 6' 4" (1.93m)

Speed, Capacities and Weight

Cruise Speed: 16 Kts. (18 MPH)	Cruise Speed RPM: 1200 Kts.
Cruise Speed Range: 1200	Max Speed: 23 Kts. (26 MPH)
Displacement: 200000 Pounds	Gross Tonnage: 151 Pounds
Water Capacity: 595 Gallons	Holding Tank: 340 Gallons
Fuel Capacity: 3646 Gallons	Fuel Consumption: 35 Gallons

Accommodations

Total Cabins: 5	Sleeps: 10
Total Heads: 6	Crew Cabin: 2
Crew Berths: 4	Crew Sleeps: 4

Hull and Deck Information

Hull Material: GRP

Deck Material: Teak

Engine Information

Engines: 2

Manufacturer: MTU

Model: 16V 2000 M90

Engine Type: Inboard

Fuel Type: Diesel

DETAILED INFORMATION

Highlights

2015 Updates New Marble floor in the Salon Overhaul of freshwater System Teak decks re-seamed and sanded in areas A complete compound and wax from the flybridge to water-line New house batteries Complete bottom job completed October 2015 All new Zincs Propellers reconditioned and prop speed One of the most notable features are her 3 VIP cabins. One being on the Main Deck (2nd Master Stateroom) This cabin has a very special feature, with California king bed, all doors are big enough for wheelchair access including the ensuite bath that has a large shower with seating and custom cabinets. All done with the most tasteful quality. GRAND BAROSSA from 2001-2013 had only 150 hour usage but had an open checkbook maintenance scheduled program. The main engines have only 2650hrs. She was meticulously maintained full time by the same Captain for over 12 years. Mechanically the yacht has had a rigorous maintenance schedule on A/C filters, water filters, sea strainers cleaning, pumps, hydraulics etc.

Salon

The salon is truly the showcase of this stunning vessel. The comfort of Italian leather couches and soft fabrics give you the option to be formal or relaxed as you desire. There is a 8 seat table of the finest wood with an additional insert to extend for 10 guests. Two beautiful cabinets provide a discrete separation into the main salon area. There are two sofas for each side comfortably for seating 10 people. There are two extra leather bucket seats, which are the most comfortable on the yacht. A full service bar is located aft on the port side, complete with brand new refrigerator, ice maker and abundant storage. The bar counter top has been lowered so the people sitting in the main salon have an uncluttered clear view out of the yacht to the aft deck table. The bar and TV cabinets create an atmosphere that the main salon is a discrete room. The entertainment system features satellite new flat TV/CD/Blu Ray all with Bose surround sound. Access to the aft deck is via the full width curved glass doors.

Galley/Laundry

The galley is located on the main deck to port, forward of the dining area. Many custom features are provided to add serving and preparation space, including pull out counters and recessed storage areas. The galley is fitted with a four burner stove and oven, convection oven/microwave, dishwasher and double sink. The counter tops are marble. Double reach in refrigerators and freezers are provided. Ships laundry facility is located in the crew quarters and features a stackable Maytag washer/dryer. Recently refitted with dishwasher, all refrigeration was replaced with US parts and custom counter space and storage was added.

Master Stateroom (Lower deck)

The Master is located on the lower accommodation deck aft. It has a king bed with built in nightstands and reading lights and a large walk-in closet aft on the port side with custom chest of drawers and linen shelves. The vanity is to starboard with custom cabinets and drawer space. A settee is located port with custom cabinets and bookshelves. Entertainment system includes new 28" flat TV/BLU RAY, ipod station and full sound system on July 2014. Large and roomy with tasteful deeper cherry wood furnishings. Large dressing room for his and hers on wood panels are exquisite. The ensuite bath has an oversized shower, his and her marble sinks, and custom cabinets.

Twin Guest Staterooms 1 & 2

These two identical guest staterooms located mid ship on the accommodation deck. Each features twin berths, hanging lockers, custom cabinets and ensuite baths. Both staterooms convert to double berths if desired. These staterooms features new 22" flat TV/BLU RAY, ipod station and full sound system on July 2014. Essentially this is a five stateroom yacht with double bed configuration something usually only found on yachts 130ft and above. Storage under the beds is standard throughout. The finishing of the storage components under the mattresses is the same high quality found throughout the yacht. A feature hardly encountered on the most exclusive super yachts in the world.

VIP Stateroom 1

The VIP stateroom 1 is located forward on the accommodation deck and features a queen bed, built in nightstands, reading lights, and custom cabinets. A vanity is located to starboard and a large closet is located on the starboard side. Bookshelves and the entertainment system are to port. Entertainment system includes new 28" flat TV/BLU RAY, ipod station and full sound system on July 2014. The ensuite bath includes shower, custom cabinets, and marble sink.

2nd Master Stateroom

The second Master Stateroom is located on the main deck forward. This cabin has a very special feature, being that all doors are big enough for wheelchair access including the ensuite bath that has a large shower with seating and custom cabinets. All done with the most tasteful quality. A California King bed with built in nightstands and reading lights are provided. A vanity is located on the starboard side with drawers and storage lockers. Hanging lockers are found on the port and starboard sides. A settee is located on the port side. Entertainment system features TV/DVD and full sound system, ipod dock.

Flybridge

The wide Flybridge is accessible through the internal staircase in the wheelhouse and the external staircase in the aft cockpit. Open with bimini top and is divided into two sections: U-shaped dining for 10 Aft and casual seating for cocktails forward. Full wet bar with sink, brand new refrigerator, 2 new ice makers and BBQ. Forward and to starboard there is a cocktail table with L-shaped seating. Walking aft, there is a wet bar with refrigerator, ice machine, and electric grill. Additional refrigeration and freezer units are strategically placed on port and starboard respectively. The Flybridge Deck on GRAND BAROSSA provides ample space to bask in the sun on padded sun areas Aft and 4 chairs with teak flooring surface. The fly bridge is fitted with full instrumentation at the helm station. The helm station is protected by canvas covers and fitted with a Bimini top. Access to the pilothouse is via the sliding glass hatch to starboard. The perimeter is protected by stainless railing, making this a child friendly area. Access to the lower aft deck is via the companionway on the port side. Continuing aft, a Bimini top covers the Hi-lo table and C-shaped seating for ten. A padded sun area is aft and four steamer chairs with cocktail tables allow for entertaining at its finest. Pilot console includes: Main engine controls main engines and reversing gear gauges Instruments for navigation Trim tab control/ indicator Rudder angle indicator Forward anchor winch control Electric search light, horn and navigation light controls Fire extinguisher pump control Maneuvering intercom connecting wheelhouse, main deck and engine room Helm seats (port side) Two seats (starboard side) New mountable flat screen TV since August 2014, Two new ice makers August 2014

Garage / Toys

One 14ft Nautica tender w/125hp outboard (motor overhauled April 2015) One paddle board December 2013 like new only used 4 times Brownies diving compressor + 4 air tanks Re-certified December 2013 One two man canoe December 2013 One 3 man doughnut December 2013 New life vests 6 diving/snorkeling sets One wake board and 2 skies Assorted fishing equipment "Aussie" Beach Club

Electronics

Raytheon 72 mile radar

Raytheon 48 mile radar

Furuno GPS navigator

New Garmin Navigation System 5212 with depth sounder and all charts for Bahamas and greater Caribbean

Raytheon Ray Chart

Robertson AP 20 Autopilot

Raytheon RL 70

Simrad VHF Radio

Simrad R135 Mk 2 rudder angle indicator

Autohelm Master View speed and depth log

Sony Vaio computer with Maptech charting software

Koopnautic/Vosper stabilizer Roll Control System

Robertson AP 20 autopilot remote

Icom IC 725 SSB radio

(2) Standard Horizon VHF

Flybridge electronics are the same

New Inteleron navigation system October 2014

4 Station cctv camera system in pilot house Wifi Satellite phone Satellite TV Cell phone

Engine Room / Mechanical

Twin MTU 16V 2000 TE 90 1800hp ZF BW 255 VP V-Drive Gearbox AISI 316 steel rudders (1) Kohler Generator 60kw 7893hrs (1) Kohler Generator 32kw 4630hrs Bow thruster fully rebuilt in December 2014 (1) 125A, three-phase, 380V/220V shore power inlet with Atlas Converter Dometic WC system (new pumps December 2014) Cruisair A/C 150.000BTU (4) Electro-hydraulic units in the aft peak for rudders, gangway, trim tabs, transom launching/recovering systems for tender and jet skis. Each of these 24V with own oil tank and own circuit (1) fresh water tank of 595gls (1) Grey water tank of 340gls (1) Black water tank of 340gls

Pilothouse

Access through staircase from lobby Two seats against aft bulkhead Area for paper charts and chart drawer Cabinets Staircase to access Flybridge New main engine controls with synchronizer Main engines and reversing gear gauges Instruments for navigation Electrical panel Rudder angle indicator Trim tabs control Compass Wipers, horn, navigation lights, anchor, winches, search light controls Fire extinguisher electro-pump control Maneuvering intercom connecting flybridge, main deck and engine room Fuel electric pump, grey and black water electric pump, bilge electric pump controls High bilge water level alarm Fuel level gauge Fresh water gauge Dimmer for console lights Teak flooring

Main Aft Deck

Shaded and features Alfresco dining for 8-10 guests with a flat 48" TV. Access to Flybridge Deck and access to the swim platform/lazarette which houses all the water toys. This is a multipurpose activity center that can be converted into a recreational area when all toys are in the water. The massive swim platform serves as an extra deck near the water level, and a place for the crew to setup a private beach club. The stern includes: (2) Electrical wrapping winches 2000W 24v Wider staircase in fiberglass with teak steps from aft cockpit to flybridge Electro-hydraulic retractable gangway in stainless steel and teak Transom with electro-hydraulic opening convertible into a wide swim platform Teak on swim platform when transom door is open Hatch to access to garage on the floor of the aft deck Water shore connection on the transom Hand shower on transom (starboard side) Shore power inlet in the bulwark

Forward Deck

Comfortable, casual pad seating for 2-4 plus two reclinable sunbeds. (2) 3500W 24v reversible winches Anchor winches control (2) 210lb anchors with 13mm chain and 325' length Chain storage with drain and washing chain pump Built-in stainless steel bow protection Glass and stainless steel hatch to access crew quarters with S.S handrails Two side peaks on superstructure (3) Electric windshield wipers Fresh water hose connection for wash downs

Powder Room

Located in the port side forward of the main salon, this beautiful day head has gorgeous marble top and floor, centralized air extracting system, sealand wc system, cabinet, mirror and unique Lalique fittings.

Exclusions

Owner's personal belongings.

Disclaimer

The Company offers the details of this vessel or yacht in good faith but cannot guarantee or warrant the accuracy of this information nor warrant the condition of the vessel. A buyer should instruct his representatives, agents, or his surveyors, to investigate such details as the buyer desires validated. This vessel or yacht is offered subject to prior sale, price change, or withdrawal without notice.

PHOTOS

Profile 2



Aussie Beach 1



Aussie Beach 2



Forward Deck



Toys



Fly Bridge A



Fly Bridge B



Fly Bridge C



Aft Deck Table



Bar



Main Salon



Salon Dining Table



Day Head



Pilot House



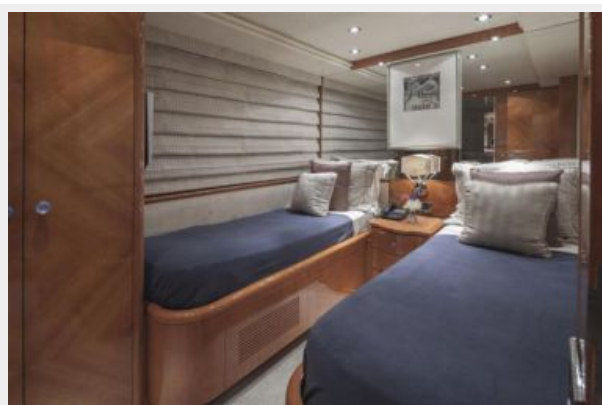
Master Stateroom



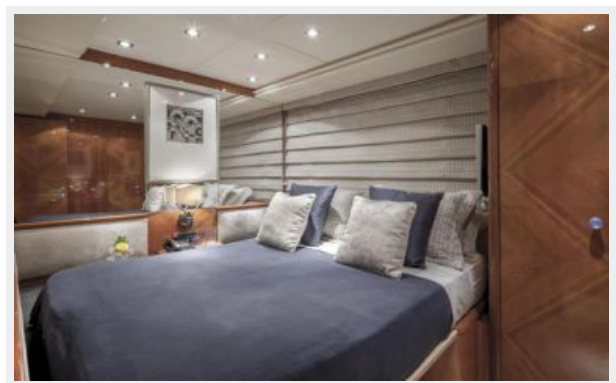
Master Head



Twin Stateroom Port Side



Twin Stateroom Stbd Side



Forward VIP Stateroom



Forward VIP Head



VIP Stateroom



VIP Head



Engine Room



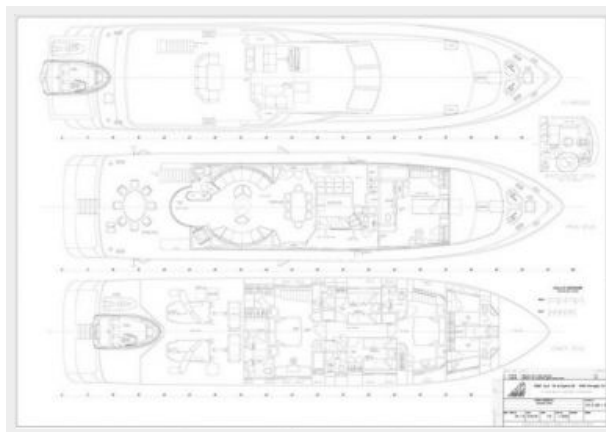
Bottom Paint Job



PropSpeed on Props, Shafts and Rudders



GA



CONTACTS

Andrey Shestakov, leading yacht broker of the sales department of Shestakov Yacht Sales Inc. Shestakov Yacht Sales Inc., the official representative of the Miami/Fort Lauderdale FL headquarters.

Contact details

Email:
andrey@shestakovyachtsales.com

Web: shestakovyachtsales.com/en/

Telephones

USA: **+1(954)274-4435**

Office hours

Monday – Saturday: **9:00 - 21:00 EDT**

Sunday: **closed**

Address



Harbour Towne Marina, 850 NE 3rd St,
STE 213, Dania, FL 33004