

## CARVER 404 CMY — CARVER



**Судостроитель:** CARVER

**Год постройки:** 1999

**Модель:** Моторная яхта

**Цена:** ЦЕНА ЯХТЫ ПО ЗАПРОСУ

**Местонахождение:** Croatia

**Длина общая:** 40' 0" (12.19m)

**Ширина:** 13' 3" (4.04m)

**Макс. осадка:** 3' 3" (0.99m)

Купить Carver 404 CMY — CARVER а также выбрать подходящую вам яхту из нашего каталога яхт вам поможет опытный яхтенный брокер Андрей Шестаков. На сегодняшний день компания Shestakov Yacht Sales Inc. имеет большое количество яхт в собственном списке продаж, а также тесно сотрудничает со всеми крупными яхтенными производителями по всему миру.

Для того чтобы купить яхту Carver 404 CMY — CARVER а также проконсультироваться по любому вопросу связанному с покупкой, продажей, чартером яхт позвоните по телефону **+7(918)465-66-44**.

# ОГЛАВЛЕНИЕ

ОГЛАВЛЕНИЕ	2
ХАРАКТЕРИСТИКИ	4
Обзор	4
Основная информация	4
Размеры	4
Скорость, вместимость и масса	4
Размещение	5
Корпус и палуба	5
Информация о двигателе	5
ПОДРОБНОЕ ОПИСАНИЕ	6
Accommodations	6
Galley	6
Hull & Deck	6
Electronics	7
Mechanical	7
Electrical	8
Additional Comments	8
Manufacturer Provided Description	8
Исключения	9
Отказ от ответственности	9
ФОТОГРАФИИ	10
Manufacturer Provided Image	10
Port fwd	10
Stbd forward	10
Stern view (dinghy not included)	10
Flybridge helm console	10
Aft deck	10
Cockpit stairway	11

Cabin entry from aft deck	11
Aft deck wetbar w/icemaker	11
Main salon fwd	11
Main salon sofa - port side	11
Main salon aft	11
Galley	12
Dinette	12
VIP head	12
VIP stateroom fwd	12
Master head	13
Master stateroom	13
Port side underway	13
Manufacturer Provided Image	13
Manufacturer Provided Image	13
Manufacturer Provided Image	13
КОНТАКТЫ	14
Контактная информация	14
Телефоны	14
Время работы	14
Адрес	14

# ХАРАКТЕРИСТИКИ

## Обзор

"LA NINA" is an excellent example of a Carver 404 Cockpit MY. Powered by twin Cummins 330B Diamond Series diesel. This famous design is based in the very popular Carver 356 MY with an added cockpit therefore offering another convenient outdoor area to the versatile Sun Deck the Carver 356 already has. This added cockpit area outstandingly improves the maneuverability of the yacht and gives an extra knot of speed while adding convenient access to the water through the extended swim platform. A very roomy interior that offers two cabins and two heads (with separate stall shower aft), a large dinette and a long salon settee at the upper level surrounded by the wrapping panoramic windows and a very comfortable fly bridge design with a solid hard top at the sun deck. The boat has a modified V bottom and a shoal draft of only 3'3" with a good cruising speed of 21 Knt and almost 25 Knt wide open. It's definitely a great option for live-aboards or island cruisers with a moderate budget but looking for a fairly new boat. A complete electronics package, 8Kw Kohler diesel Generator, full fly bridge & aft deck canvas package with enclosures, panoramic wrapping windows and much more for a low asking price. This boat won't last long! DYSID:2804989

## Основная информация

**Тип судна:** Моторная яхта

**Подкатегория:** Aft Cabin

**Модельный год:** 1999

**Год постройки:** 1999

**Страна:** Croatia

## Размеры

**Длина общая:** 40' 0" (12.19m)

**Ширина:** 13' 3" (4.04m)

**Макс. осадка:** 3' 3" (0.99m)

## Скорость, вместимость и масса

**Водоизмещение:** 25600 Pounds

**Вместимость воды:** 81 Gallons

**Вместимость сточного бака:** 36 Gallons

**Объем топливного бака:** 318 Gallons

## Размещение

---

Всего коек: 8

## Корпус и палуба

---

Материал корпуса: Fiberglass

## Информация о двигателе

---

Двигатели: 2

Производитель: Cummins

Модель: 6BTA

Тип двигателя: Inboard

Тип топлива: Diesel

---

# ПОДРОБНОЕ ОПИСАНИЕ

---

## Accommodations

---

Large forward cabin features a double pullman berth off to the starboard side with abundant storage under and a large hanging locker to port. Next, going aft, is the guests head with FRP molded liner and integrated shower to starboard and spacious storage lockers to port. Aft is the lounge area with a large and open galley to port opposite to the convertible dinette that seats 4 to starboard. Few steps up there is a large salon area where a convertible leather sofa to port and a club chair and entertainment center to starboard make the most usable living area. Three steps down is the huge aft (owner's) cabin featuring a large pullman double berth off to port and a large head with separate stall shower to starboard. There is a large stainless steel access door from this cabin to the cockpit as well. From the salon, up three more steps, there is the aft covered deck equipped with a hard top, plexiglass access side doors and a wet bar. This is the "al fresco" outdoor living area that makes the Carver Motor Yacht the envy of all the rest! There is a convenient aft deck door that leads to the curved spiral ladder that access the cockpit from the aft deck. The aft cockpit is large and roomy for easy maneuverability, fishing, diving and docking. The fly bridge is integrated to the rest of the boat by a molded FRP steps coming from the Aft Deck. Walk around this boat is easy due to a modest but sufficient side decks.

## Galley

---

- Stand alone refrigerator w/freezer.
- Single S/S deep sink.
- Pressurized hot & cold water system.
- Single s/s round sink.
- 18 gal holding tank X 2.
- Water heater.
- Granite counter top "Capuccino".
- 3-Burner electric stove w/oven.
- Hot & cold pressurized water system.
- Microwave oven.
- Built-in trash bin.

## Hull & Deck

---

- 2 Zone marine air 25,000 btu each reverse A/C.
- 2 vacuflush toilets.
- Maxwell electric anchor windlass w/foot switches w/50' 3/8 chain and remote control.
- S/S bow pulpit.
- 8 s/s deck cleats.

- Bomar deck hatch.
- Aft deck hard-top.
- S/S side handrails.
- Built-in deck to cockpit ladder.
- Wet bar w/food preparation.
- TV connection.
- Built-in bar.
- CO2 carbon monoxide detector in each cabin.
- Recessed halogen lights at salon and 2 staterooms.
- Aft deck enclosure.
- Transon door.
- Cockpit shower.
- Shore water intake.
- Fly bridge radar arch aluminum.

## Electronics

---

- Raytheon SL70 Pathfinder Radar/Plotter.
- Garmin 180 GPS.
- Digital depth sounder.
- Raytheon 48 miles radar.
- Garmin 160 Fishfinder Blue.
- Standard Horizon Quest VHF radio w/distress button.
- 7" Ritchie compass.

## Mechanical

---

- Teleflex engine controls.
- Rudder angle indicator.
- Tachometer / Tem / Oil / Volts gauges.
- Engine hour meters.
- 1 3/4" s/s shafts.
- Groco 6-2000 raw water sea strainers.
- Fuel transfer pump 12V.
- 3 Automatic bilge pumps.
- Bennett trim tabs.
- Racor 900 MA fuel filter w/water separators.
- Fresh water pumps.
- Steering wheel Hynautic Teleflex hydraulick steering system.
- Engine Synchronyzer.
- Water heater.
- Dry chemical fire extinguishers.

- Racor R24S generator fuel filter w/water separators.
- Grocco 6-1000 raw water sea strainer for generator.
- Engine room fire extinguisher.
- Engine room blower.
- Bronze 3 Blade propellers - 23x28

---

## Electrical

---

- Kohler 8 kW diesel Generator (815 hrs).
- 2 guest battay selector switches.
- Automatic battey charger.
- 2 x 50' shore power cord.
- 1 Maringo TV/Cable receptacle.
- Outdoor 125V Ac receptacle at wetbar.
- 2 Starting batteries.
- Electrical outlets.
- 2 x 30amps/125V shore power receptacles.

---

## Additional Comments

---

"La Niña" is properly equipped for cruising and ready to go. She has the best Carver interior layout for a 40' Motor Yacht of this vintage and offers the advantage of multiple levels making a full integration of this boat's living areas creating a feeling of size and volume only found on much larger yachts. This boat has an excellent Bimini/Enclosure set up that covers everything from the Fly Bridge to the Aft Deck. The interior and exterior of this great boat shows very clean and her good electronics package only adds to the perfect island cruising or live-aboard equation. She's worth every penny of her asking price and it's a MUST SEE for anyone looking for a solid and roomy Aft Cabin Motor Yacht under \$200K!

---

## Manufacturer Provided Description

---

With features like an oversized swim platform, a huge transom storage locker, an expansive cockpit, and a unique spiral staircase, the Carver 404 Cockpit Motor Yacht is designed for pure comfort and convenience. Below deck, the 404 provides sleeping accommodations for up to eight including a convertible dinette, available Flexsteel salon sofa with Magic Bed, forward stateroom, and a master stateroom aft offering direct access to the cockpit. The 404 also provides a complete galley, entertainment features like a color TV and VCR, and two head compartments each with a shower. Topside, the 404's bridge includes seating for six, full instrumentation, and plenty of storage. Step down and the 404's entertainment-ready aft deck with available wetbar and icemaker provides an ideal site for an evening of entertaining or a relaxing sunny cruise.



---

## Исключения

---

При продаже яхты исключаются личные вещи владельца.

---

## Отказ от ответственности

---

Компания предоставляет описание судна или яхты добросовестно, но не может гарантировать точность этой информации, а также не ручается за техническое состояние. Покупатель должен проинструктировать своих агентов или оценщиков исследовать представленную информацию более подробно, по собственному желанию. Продажа судна или яхты, изменение цены или снятие с продажи будет происходить без предварительного уведомления.

# ФОТОГРАФИИ

**Manufacturer Provided Image**



**Port fwd**



**Stbd forward**



**Stern view (dinghy not included)**



**Flybridge helm console**



**Aft deck**



**Cockpit stairway**



**Cabin entry from aft deck**



**Aft deck wetbar w/icemaker**



**Main salon fwd**



**Main salon sofa - port side**



**Main salon aft**



**Galley**



**Dinette**



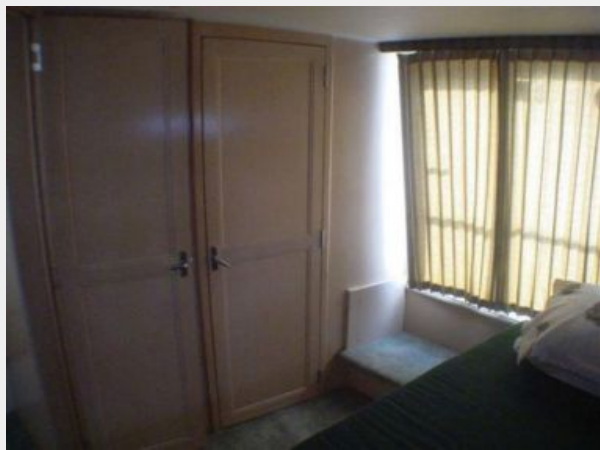
**VIP stateroom fwd**



**VIP head**



**Master stateroom**



**Master head**



**Port side underway**



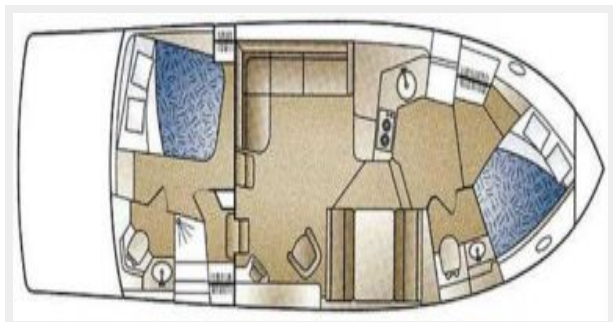
**Manufacturer Provided Image**



**Manufacturer Provided Image**



**Manufacturer Provided Image**



# КОНТАКТЫ

---

Андрей Шестаков (Andrey Shestakov) – ведущий яхтенный брокер отдела продаж яхт и судов компании Shestakov Yacht Sales Inc. Официальный представитель Shestakov Yacht Sales Inc. для русскоговорящих клиентов в центральном офисе компании в Майами/Форт Лодердейл/Флорида/США.

## Контактная информация

---

Email: [andrey@shestakovyachtsales.com](mailto:andrey@shestakovyachtsales.com)

Web: [shestakovyachtsales.com](http://shestakovyachtsales.com)

## Телефоны

---

Краснодарский край: **+7(918)465-66-44**

США, Майами, Флорида: **+1(954)274-4435**

## Время работы

---

Понедельник – Суббота: **9:00 - 21:00**  
EDT

Воскресенье: **Закрето**

## Адрес

---



Harbour Towne Marina, 850 NE 3rd St,  
STE 213, Dania, FL 33004