

TIME — SYMBOL



Судостроитель: SYMBOL

Год постройки: 2003

Модель: Моторная яхта

Цена: **ЦЕНА ЯХТЫ ПО ЗАПРОСУ**

Местонахождение: United States

Длина общая: 56' 0" (17.07m)

Ширина: 17' 4" (5.28m)

Мин. осадка: 4' 6" (1.37m)

Крейс. скорость: 17 Kts. (20 MPH)

Макс. скорость: 21 Kts. (24 MPH)

Купить **TIME — SYMBOL** а также выбрать подходящую вам яхту из нашего каталога яхт вам поможет опытный яхтенный брокер Андрей Шестаков. На сегодняшний день компания **Shestakov Yacht Sales Inc.** имеет большое количество яхт в собственном списке продаж, а также тесно сотрудничает со всеми крупными яхтенными производителями по всему миру.

Для того чтобы купить яхту **TIME — SYMBOL** а также проконсультироваться по любому вопросу связанному с покупкой, продажей, чартером яхт позвоните по телефону **+7(918)465-66-44**.

ОГЛАВЛЕНИЕ

ОГЛАВЛЕНИЕ	2
ХАРАКТЕРИСТИКИ	6
Обзор	6
Основная информация	6
Размеры	6
Скорость, вместимость и масса	7
Размещение	7
Корпус и палуба	7
Информация о двигателе	7
ПОДРОБНОЕ ОПИСАНИЕ	8
Accommodations	8
Galley	8
Companionway	8
Salon	8
Lower Helm	9
Lower Helm Electronics	9
Fly Bridge Electronics	9
Master Stateroom	9
Master Head & Shower	9
VIP Stateroom 1	9
VIP Head & Shower	10
Guest Stateroom	10
Cockpit	10
Lazarette	10
Engine Room & Machinery	10
Electrical Equipment	11
Fly Bridge	11
Deck & Hull Equipment	11

Salesman's Comments	11
Исключения	11
Отказ от ответственности	11
ФОТОГРАФИИ	13
Port View	13
Aft View	13
Starboard View	13
Forward Deck	13
Side Deck	14
Forward Deck	14
Side Deck	14
Cockpit	14
Access Hatch	15
Cockpit	15
Swim Platform	15
Upper Deck	15
Upper Deck	15
Upper Deck	15
Upper Deck	16
Upper Helm	16
Upper Helm	16
Upper Deck	16
Davit on Upper Deck	16
Salon	16
Salon	17
Salon	17
Salon	17
Galley	17
Stairs to Helm	17

Helm	17
Helm	18
Helm	18
Stairs to Staterooms	18
Master Stateroom	18
Master Stateroom	18
Master Stateroom	18
Master Stateroom	19
Master Stateroom	19
Master Head	19
Master Head	19
Companionway	20
Companionway	20
VIP Stateroom	20
VIP Stateroom	20
VIP Stateroom	20
VIP Stateroom	20
VIP Head	21
VIP Head	21
Guest Stateroom	21
Laundry	21
Engine Room	22
Engine Room	22
Engine Room	22
Engine Room	22
Engine Room	22
Engine Room	22
Engine Room	22
Engine Room	23
Engine Room	23

КОНТАКТЫ	24
Контактная информация	24
Телефоны	24
Время работы	24
Адрес	24

ХАРАКТЕРИСТИКИ

Обзор

TIME is a 54' – 56' Symbol, depending on who writes the listing. However, the confusion does not change that it is a raised pilothouse design with three staterooms and two heads. The pilothouse offers a dinette on the port side of the helm. Just behind it, the U-shaped is open to the salon, just a few steps down, which features an L-shaped sofa, high low table and two occasional chairs. On the back side of the galley is a flat screen TV and plenty of storage. Steps on the starboard side of the pilothouse lead to the staterooms.

The Master is full beam and provides a private ensuite head/shower with plenty of storage. The VIP, full forward, features a center line double berth with entrance to the head/shower, shared with the single-berthed third stateroom. The flybridge is large and has a center line helm, wet bar/barbeque/refrigerator cabinet, L-shaped seating and aft deck with a davit and chocks. The spacious cockpit offers a transom gate to the swim platform, side boarding gates, a ladder to the flybridge and entrance to the engine room. Over \$30K in recent upgrades and maintenance including kitchen appliances, exterior resealing of all windows, hatches and doors, new interior upholstery, new windscreen on bridge, complete PM on engines and generator.

Основная информация

Тип судна: Моторная яхта

Подкатегория: Raised Pilothouse

Модельный год: 2003

Год постройки: 2003

Страна: United States

Размеры

Длина общая: 56' 0" (17.07m)

Ширина: 17' 4" (5.28m)

Мин. осадка: 4' 6" (1.37m)

Длина привального бруса: 56' 0"
(17.07m)

Скорость, вместимость и масса

Крейс. скорость: 17 Kts. (20 MPH)

Макс. скорость: 21 Kts. (24 MPH)

Водоизмещение: 76700 Pounds

Вместимость воды: 250 Gallons

Вместимость сточного бака: 35 Gallons

Объем топливного бака: 850 Gallons

Размещение

Всего кают: 3

Спальные места: 5

Всего ком. состава: 2

Корпус и палуба

Материал корпуса: Fiberglass

Информация о двигателе

Двигатели: 2

Производитель: Caterpillar

Модель: C-12

Тип двигателя: Inboard

Тип топлива: Diesel

ПОДРОБНОЕ ОПИСАНИЕ

Accommodations

TIME may be entered from either the side decks at the pilot house or through the aft salon sliding door from the cockpit. Entering via the cockpit through the sliding door, you arrive in the very comfortable main salon, large for this size yacht considering the walk-around side decks, and open to the pilot house and galley. Up a few steps, the galley is starboard and provides all the necessary appliances, great storage and substantial counter space. Just forward is the lower, center line helm station and an L-shaped dinette with table to port. Doors on both sides exit to the side decks, convenient to the bow. Starboard is a staircase to the staterooms below. All aft is the Master that provides a center-line island queen berth and an ensuite head and shower. Next forward is a single berth stateroom and all the way forward is the VIP with center-line full berth and entrance to the 2nd head & shower. The flybridge is well designed with center-line helm station and 2 chairs, L-shaped seating, and a fiberglass cabinet with BBQ, refrigerator and sink. The aft section of the bridge is fitted with davit and chocks for a future dinghy.

Over \$30K in recent upgrades and maintenance including kitchen appliances, exterior resealing of all windows, hatches and doors, new interior upholstery, new windscreen on bridge, complete PM on engines and generator.

Galley

U-shaped with Corian counter tops Teak & holly floor, just refinished New Bosch dishwasher New Dacor microwave/convection oven New 2 drawer U-Line refrigerator Sub Zero freezer Kenyon 4-burner cook top Overhead and under counter storage cabinets Large windows Trash receptacle Lights and electrical outlets

Companionway

Teak steps with inlay carpet leading to staterooms Handrail, stainless steel Electrical panel main and sub panel GE washer/dryer stacked Courtesy lights & switches Teak paneling

Salon

Teak paneling Custom carpet L-shaped sofa, upholstered with tan fabric, with storage under Marine A/C controls Hi-lo teak table Upholstered occasional chair Reclining chair and foot stool Entertainment center with Visio HD TV Blue ray DVD player Yamaha stereo receiver Yamaha 5 disc player Glass storage cabinet with glass front Drawer and storage cabinet U-Line ice

maker Built-in lighted cabinet with glass doors Built-in end table Overhead lights, speakers and vinyl head liner Sliding stainless steel door to cockpit Electrical outlets & telephone receptacles

Lower Helm

Center line with built-in cabinet for electronics Stidd helm chair Hynautic engine controls Trim tab controls Engine stop & start Cat engine control panels (2) Teak steering wheel Rudder angle indicators Ships systems display, fuel, tank watch, generator control panel Port & starboard side entry doors Full electronics package Dinette L-shaped with teak table top Teak & Holly floors just refinished Marine AC controls Side power bow thruster Stairway to FB Windshield wipers & washers Electrical outlets and telephone outlet Smoke detector & carbon monoxide detector

Lower Helm Electronics

Furuno Navnet screens (2) Furuno Navnet radar Furuno GPS/Chart Plotter, Navnet Furuno depth finder, Navnet Auto Pilot, Simrad AP22 ICOM VHF M-127 radio & hailer Rule 3" compass 12 volt electrical outlet

Fly Bridge Electronics

Furuno Navnet Furuno Navnet radar Furuno Navnet GPS/Chart Plotter Furuno RD 30 depth/speed/temp ICOM VHF, IC-M127 radio & hailer Simrad AP 22 auto pilot Compass 3" Rule Telephone

Master Stateroom

Center line queen berth w/drawer storage under Teak interior wood paneling Custom carpet and designer bedding Marine AC controls Lights and electrical outlets Phone outlets Night stands with drawers on either side of berth Reading lights Speakers in headliner Hanging locker Port holes Zenith TV Ample storage Full length mirror Entrance to ensuite head/shower

Master Head & Shower

Corian counter top with under mount sink Teak & holly flooring Mirrored cabinet & mirrored ceiling Jabsco head Stall shower & tub Port hole Electrical outlets and lights Cabinet storage and towel bar

VIP Stateroom 1

Center line island berth, full Storage under berth Teak wood paneling Overhead hatch and screen Hanging locker Marine A/C controls Drawer storage Overhead lights & stereo speakers Reading lights Sharp TV starboard side Electrical & phone outlets Ensuite head/shower Custom carpet & designer bedding

VIP Head & Shower

Corian counter top with under mount sink & faucet Overhead lighting Mirrored ceiling Mirrored medicine cabinet Teak & holly floors Electric toilet, Bemis Stall shower Exhaust fan Port hole Electrical outlets Towel rack Privacy door

Guest Stateroom

Single berth with storage above & below Carpet Electrical outlet AC vent Port hole Teak wood paneling Privacy door

Cockpit

Fiberglass deck with engine room hatch Transom gate to swim platform & 2 side gates Fiberglass swim platform w/ladder & stainless boarding hoops Sliding stainless steel door to salon Rod holders (3) Aft salon opening window w/screen Overhead speakers Cockpit drains Ladder to fly bridge Access to walk around side decks

Lazarette

Fiberglass deck hatch, hinged Water tanks 2-250 gals. Cable master cord container & cable master Hynautic steering and rudder shelf Stainless steel ladder w/teak steps Emergency rudder control steering bar Overhead rod rack Door to engine room Storage room

Engine Room & Machinery

Caterpillar C-12 diesel engines 1883 & 1881 hours Complete CAT maintenance complete at 1790 hrs. 1500 hour service, all maintenance & heat exchanges completed Northern Lights generator 16.5KW, 1384 hours (complete maintenance 4/2015) Fuel tanks (2) total 850 gals Racor fuel filters, engines & generator Fireboy fire suppression system Bilge pumps, electric Marine A/C compressor, service 2015 ZF transmissions Hydraulic steering Oil change system, Reverso Overhead lights Battery boxes with covers Sea strainers

Electrical Equipment

Northern lights generator 12 kw with enclosure 1384 hours 12/24 volt DC system 120/240 volt A/C system 50 amp 50' shore cord, cable master 30 amp battery charger Xantrex 4000 watt inverter 120 amps 6 Battery cutoff switches Batteries: 3-8D, 8-house batteries, 2 bow thruster batteries Battery boxes Electrical panel AC & DC + sub panels

Fly Bridge

Radar arch with fixed canvas top Centerline helm station w/ controls Cat engine displays and controls Starts & stops Rudder angle indicator Electrical outlet & 12 volt outlet Venture forward windshield Chart area w/ cover Courtesy & overhead lights Helm & companion seat Wet bar, BBQ grill, Norcold refrigerator & storage Side power bow thruster Hynautic controls Stainless steel wheel Stainless steel handrail & nonskid deck Overhead rod rack Speakers UMT davit and chocks, new motor & controller 2014

Deck & Hull Equipment

Fiberglass bow pulpit Muir windlass & plow anchor Windlass wash down in hatch next to pulpit Two SS anchor roller brackets Stainless steel deck hardware & bow rail & stanchions & hand rails Forward sun pad with cover Walk around side decks with molded steps Pilothouse side doors P & S Fiberglass swim platform with molded steps Swim platform removable hoop rail rails, stainless steel Canvas cover for bridge equipment & windshield Navigation lights UMT davit and chocks Windshield resealed Exterior windows resealed New gaskets on exterior doors

Salesman's Comments

TIME is a very comfortable yacht excellent for cruising the Bahamas or for a possible live-aboard. Equipped with all the necessary items and having all the services completed, it is ready to go. Offered for sale because the owner is looking to move up to a larger yacht after many years of enjoyment on TIME.

Исключения

При продаже яхты исключаются личные вещи владельца.

Отказ от ответственности

Компания предоставляет описание судна или яхты добросовестно, но не может гарантировать точность этой информации, а также не ручается за техническое

состояние. Покупатель должен проинструктировать своих агентов или оценщиков исследовать представленную информацию более подробно, по собственному желанию. Продажа судна или яхты, изменение цены или снятие с продажи будет происходить без предварительного уведомления.

ФОТОГРАФИИ

Port View



Aft View



Starboard View



Forward Deck



Forward Deck



Side Deck



Side Deck



Cockpit



Access Hatch



Cockpit



Swim Platform



Upper Deck



Upper Deck



Upper Deck



Upper Deck



Upper Helm



Upper Helm



Upper Deck



Davit on Upper Deck



Salon



Salon



Salon



Salon



Galley



Stairs to Helm



Helm



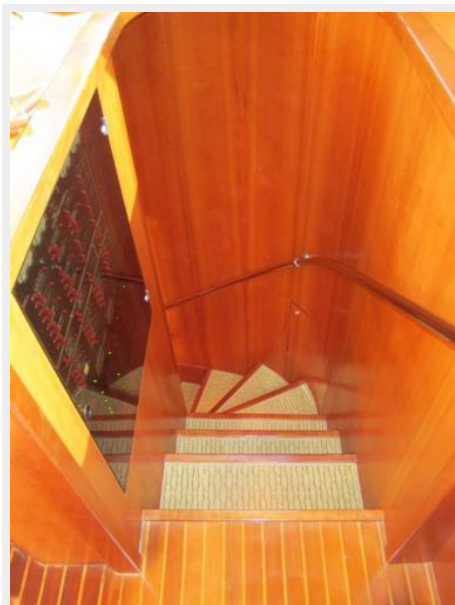
Helm



Helm



Stairs to Staterooms



Master Stateroom



Master Stateroom



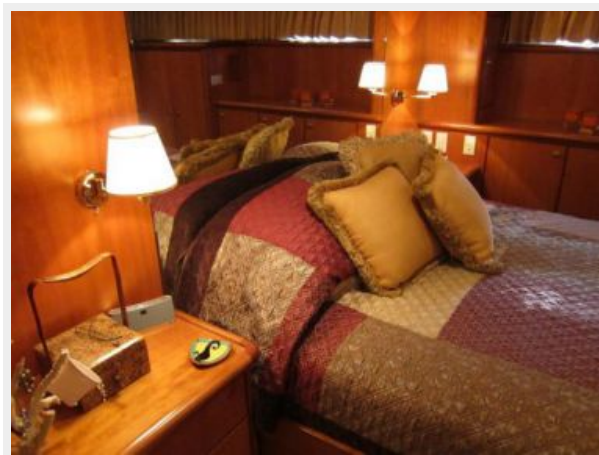
Master Stateroom



Master Stateroom



Master Stateroom



Master Head



Master Head



Companionway



Companionway



VIP Stateroom



VIP Stateroom



VIP Stateroom



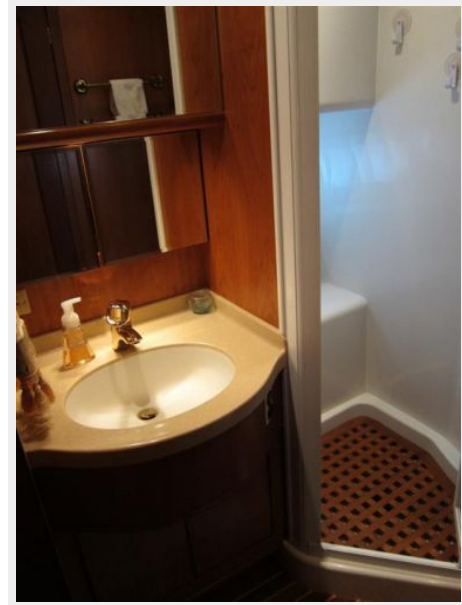
VIP Stateroom



VIP Head



VIP Head



Guest Stateroom



Laundry



Engine Room



Engine Room



Engine Room



Engine Room



Engine Room



Engine Room



Engine Room



Engine Room



КОНТАКТЫ

Андрей Шестаков (Andrey Shestakov) – ведущий яхтенный брокер отдела продаж яхт и судов компании Shestakov Yacht Sales Inc. Официальный представитель Shestakov Yacht Sales Inc. для русскоговорящих клиентов в центральном офисе компании в Майами/Форт Лодердейл/Флорида/США.

Контактная информация

Email: andrey@shestakovyachtsales.com

Web: shestakovyachtsales.com

Телефоны

Краснодарский край: **+7(918)465-66-44**

США, Майами, Флорида: **+1(954)274-4435**

Время работы

Понедельник – Суббота: **9:00 - 21:00**
EDT

Воскресенье: **Закрито**

Адрес



Harbour Towne Marina, 850 NE 3rd St,
STE 213, Dania, FL 33004