

" TIME TO PLAY " — SEA RAY



Судостроитель: SEA RAY

Год постройки: 2008

Модель: Крейсер

Цена: **ЦЕНА ЯХТЫ ПО ЗАПРОСУ**

Местонахождение: United States

Длина общая: 55' 0" (16.76m)

Ширина: 15' 11" (4.85m)

Макс. осадка: 4' 6" (1.37m)

Крейс. скорость: 24 Kts. (28 MPH)

Макс. скорость: 31 Kts. (36 MPH)

Купить " Time to Play " — SEA RAY а также выбрать подходящую вам яхту из нашего каталога яхт вам поможет опытный яхтенный брокер Андрей Шестаков. На сегодняшний день компания Shestakov Yacht Sales Inc. имеет большое количество яхт в собственном списке продаж, а также тесно сотрудничает со всеми крупными яхтенными производителями по всему миру.

Для того чтобы купить яхту " Time to Play " — SEA RAY а также проконсультироваться по любому вопросу связанному с покупкой, продажей, чартером яхт позвоните по телефону **+7(918)465-66-44**.

ОГЛАВЛЕНИЕ

ОГЛАВЛЕНИЕ	2
ХАРАКТЕРИСТИКИ	3
Основная информация	3
Размеры	3
Скорость, вместимость и масса	3
Размещение	3
Корпус и палуба	3
Информация о двигателе	4
ПОДРОБНОЕ ОПИСАНИЕ	5
Vessel walkthrough	5
Electronics	5
Galley	6
Electrical	6
Engine Room	6
Hull and Deck	7
Исключения	7
Отказ от ответственности	7
ФОТОГРАФИИ	8
КОНТАКТЫ	17
Контактная информация	17
Телефоны	17
Время работы	17
Адрес	17

ХАРАКТЕРИСТИКИ

Основная информация

Тип судна: Крейсер

Подкатегория: Express

Модельный год: 2008

Год постройки: 2008

Страна: United States

Размеры

Длина общая: 55' 0" (16.76m)

Ширина: 15' 11" (4.85m)

Макс. осадка: 4' 6" (1.37m)

Скорость, вместимость и масса

Крейс. скорость: 24 Kts. (28 MPH)

Крейсерская скорость поворота: 1950 Kts.

Макс. скорость: 31 Kts. (36 MPH)

Макс. скорость поворота: 2300 Kts.

Вместимость воды: 200 Gallons

Вместимость сточного бака: 70 Gallons

Объем топливного бака: 800 Gallons

Размещение

Всего кают: 2

Всего коек: 2

Всего ком. состава: 2

Корпус и палуба

Материал корпуса: Fiberglass

Информация о двигателе

Двигатели: 2

Производитель: MAN

Модель: D2848LE423

Тип двигателя: Inboard

Тип топлива: Diesel

ПОДРОБНОЕ ОПИСАНИЕ

Vessel walkthrough

- From the hydraulic swim platform entry into the cockpit is provided both port and starboard with the main entry from starboard steps. Immediately to port is a large "J" shaped lounge with adjacent electric grill/cooktop and refrigerator to starboard. Forward of the lounge is a wetbar with sink and icemaker with lots of integrated storage beneath. Opposite the wetbar is a patented circular lounge that can be swung around a beautiful optional high-gloss teak dinette table so that the occupants view can be in any direction. Forward of the circular lounge is " Time to Play's " state of the art helm with two custom helm chairs with excellent view in every direction. The helm is equipped with every option to include new (August 2011) dual Raymarine E-140W touchscreen displays, radar, autopilot, 24V bow and stern thrusters, digital engine diagnostics, digital generator display all ergonomically designed for easy access to the systems from the helm. Opposite the helm to port is additional companion seating making accommodating up to 16 adults a breeze on deck.

Moving below deck, the large galley is situated to port. The galley includes all appliances necessary to prepare gourmet meals while at sea, at the dock, or on the hook. Opposite the galley is a large "J" shaped convertible settee that converts into a full sized berth.

Entertainment is provided by a large flat screen TV conveniently located in the galley island bulkhead. Bose surround-sound entertainment systems are provided in the salon and both staterooms along with satellite receivers for all four of the televisions aboard. All vessel systems including AC and DC power, water, waste, lighting, entertainment and ship to shore power is controlled via touchscreen and remote touchscreen controls. These controls can be accessed remotely using Ipad, Iphone, computer, or other remotely connecting devices. Forward of the salon is the VIP stateroom with private access to the forward head. The VIP stateroom includes a huge walk-in, cedar-lined hanging locker with additional drawer storage. The head includes a large stand up shower stall with 6' 6" of headroom. A privacy door is also included for day head access. The large vanity with solid surface counter tops has plenty of storage for those necessities while on extended voyages. Aft of the salon, the full-beam master stateroom includes a centerline queen sized berth, a study or seating area situated to port and a vanity/dresser to starboard. Large cedar hanging lockers are situated both port and starboard. The queen berth is fully adjustable with massage function, and gas-assisted lift. The very large head includes stand up shower stall, vanity, and solid surface counter tops with plenty of storage. Extra-large windows provide lots of light not typically seen in express styled yachts.

Electronics

- " Time to Play's" electronics package was upgraded to include the very powerful Raymarine E140W multifunction touch screen displays (2). At this time the antennas, bus

system, DSM sounder module, and radar were upgraded as well. Her powerful autopilot will track to multiple points reducing the operators workload ultimately making cruising more enjoyable. Optional 24V bow and stern thrusters make maneuvering in tight quarters or in adverse conditions a breeze.

Galley

- The fully functioning galley includes large areas of storage making provisioning for those extended cruises a delight. Lots of countertop space is available for preparation of meals and all appliances are conveniently located. Sub Zero refrigerator and freezer are located beneath the countertop while the stainless steel sink and three-burner Kenyon cooktop include convenient covers matching the solid surface countertop allowing for even more preparation space when not in use. The Tappan microwave/convection oven is neatly stowed within a drawer top when not in use. Drawers and smoked-glass cabinets are abundant within the galley.

Electrical

- All vessel systems including AC and DC power, water, waste, lighting, entertainment and ship to shore power is controlled via touchscreen and remote touchscreen controls. This system is similar to the Lutron systems one might find in an upscale home. At all companionways, staterooms, heads, and salon, touchpads are available and conveniently marked for lighting, entertainment, and water systems. The touchpads located in the heads also include readout for fresh water level and waste level. A large touchscreen is located at the companionway to the master stateroom and can be utilized to monitor all of the ships systems as well as program all systems for use underway, at the dock, or while owners are away. These controls can be accessed remotely using Ipad, Iphone, computer, or other remotely connecting devices. Additionally, a remote control can be used while aboard to control systems from anywhere aboard. " Time to Play's" electrical systems include 12 and 24 volt DC systems as well as a 50 Amp 240 volt AC system. A remotely operated Glenndenning cable master can be utilized by one person making the conversion from ship's power back to shore power a snap. Power underway is provided by an Onan 21 kW generator.

Engine Room

- Engine access is located in the cockpit with systems such as the generator being cleverly positioned far aft to reduce cabin noise while utilizing ship's power. All systems are relatively easy to access and optional systems such as oil changing pumps reduce maintenance costs. Optional MAN 900HP Common Rail Diesels D2848LE423 power " Time to Play" into the 30 knot realm making her as quick as she is sleek. The Onan

21.0KW Diesel Generator with sound shield and remote start powers all of the vessels systems and again is located far aft as to reduce noise.

Hull and Deck

- The foredeck includes a roomy sunpad with drink holders, windlass with stainless steel anchor, foot pedal windlass controls, and large gauge stainless steel rails and stanchions. The hardtop includes dual electronically retracting sun screens along with sunbrella aft enclosure. The hull is midnight blue and was recently waxed. The cockpit includes a patented multi-position carousel seating, outdoor galley, grill, and A/V entertainment system and seating for many owners and guests. The hydraulic swim platform includes guides for chocks that can accommodate tender or jet ski.

Исключения

При продаже яхты исключаются личные вещи владельца.

Отказ от ответственности

Компания предоставляет описание судна или яхты добросовестно, но не может гарантировать точность этой информации, а также не ручается за техническое состояние. Покупатель должен проинструктировать своих агентов или оценщиков исследовать представленную информацию более подробно, по собственному желанию. Продажа судна или яхты, изменение цены или снятие с продажи будет происходить без предварительного уведомления.

ФОТОГРАФИИ

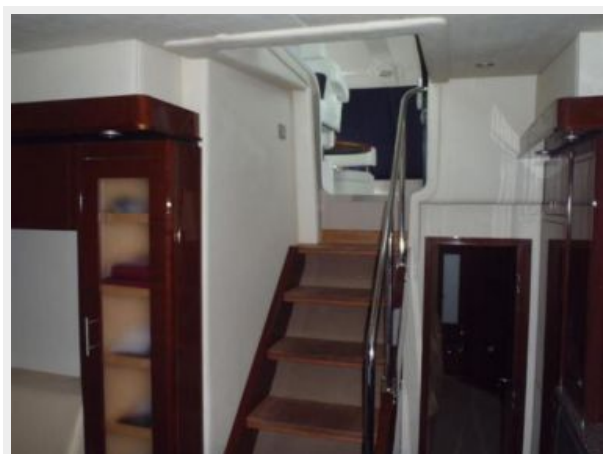
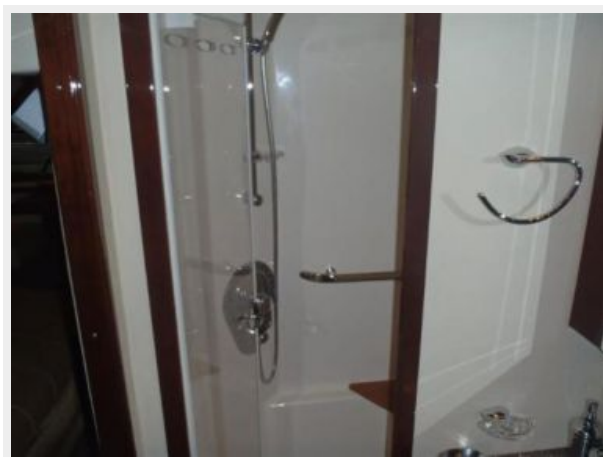


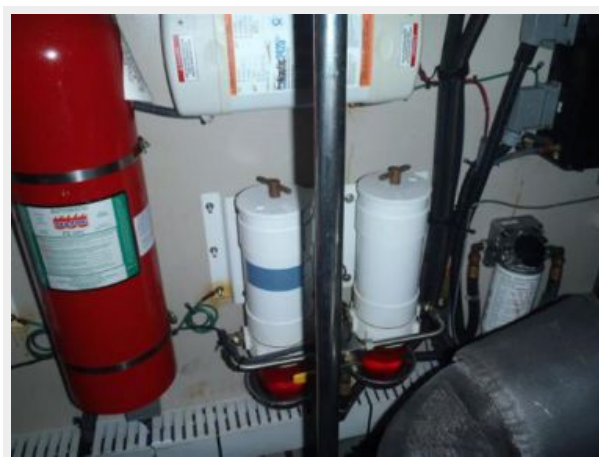
















КОНТАКТЫ

Андрей Шестаков (Andrey Shestakov) – ведущий яхтенный брокер отдела продаж яхт и судов компании Shestakov Yacht Sales Inc. Официальный представитель Shestakov Yacht Sales Inc. для русскоговорящих клиентов в центральном офисе компании в Майами/Форт Лодердейл/Флорида/США.

Контактная информация

Email: andrey@shestakovyachtsales.com

Web: shestakovyachtsales.com

Телефоны

Краснодарский край: **+7(918)465-66-44**

США, Майами, Флорида: **+1(954)274-4435**

Время работы

Понедельник – Суббота: **9:00 - 21:00**
EDT

Воскресенье: **Закрито**

Адрес



Harbour Towne Marina, 850 NE 3rd St,
STE 213, Dania, FL 33004