

NEW ADVENTURE — SEA RAY



Builder: SEA RAY

Year Built: 2005

Model: Cruiser

Price: PRICE ON APPLICATION

Location: United States

LOA: 50' 0" (15.24m)

Beam: 15' 3" (4.65m)

Min Draft: 4' 2" (1.27m)

Our experienced yacht broker, Andrey Shestakov, will help you choose and buy a yacht that best suits your needs **New Adventure — SEA RAY** from our catalogue. Presently, at Shestakov Yacht Sales Inc., we have a wide variety of yachts available on our sale's list. We also work in close contact with all the big yacht manufacturers from all over the world.

If you would like to buy a yacht **New Adventure — SEA RAY** or would like help answering any questions concerning purchasing, selling or chartering a yacht, please call **+1(954)274-4435**

TABLE OF CONTENTS

TABLE OF CONTENTS	2
SPECIFICATIONS	3
Basic Information	3
Dimensions	3
Speed, Capacities and Weight	3
Hull and Deck Information	3
Engine Information	3
DETAILED INFORMATION	4
Electronics	4
Deck Equipment	4
Engin Room	4
Exclusions	4
Disclaimer	4
PHOTOS	6
CONTACTS	14
Contact details	14
Telephones	14
Office hours	14
Address	14

SPECIFICATIONS

Basic Information

Category: Cruiser

Sub Category: Express

Model Year: 2005

Year Built: 2005

Country: United States

Dimensions

LOA: 50' 0" (15.24m)

Beam: 15' 3" (4.65m)

Min Draft: 4' 2" (1.27m)

MFG Length: 53' 4" (16.26m)

Speed, Capacities and Weight

Displacement: 40000 Pounds

Hull and Deck Information

Hull Material: Fiberglass

Engine Information

Engines: 2

Manufacturer: Cummins

Model: QSM-11

Engine Type: Inboard

Fuel Type: Diesel

DETAILED INFORMATION

Electronics

- Raymarine C-120 Plotter/ Depth
- Raymarine Radar
- Raymarine Autopilot
- Sea Ray Navigator
- VHF Radio

Deck Equipment

- Bow Thruster
- Hydraulic Lift
- Spot Light
- Cockpit Ice Maker
- Cockpit Refrigerator
- Sat TV
- Windlass
- Cockpit Stereo
- Cock Pit Air Conditioning
- Underwater Lights

Engin Room

- Cummins QSM-11 630 HP with 1200 hours
- Onan Generator 13.5 KW in Sound Shield
- Oil Transfer Pump
- Spare Props
- Raycor Fuel Filters
- 560 Gal. Fuel
- 150 Gal. Water
- 68 Gal. Waste

Exclusions

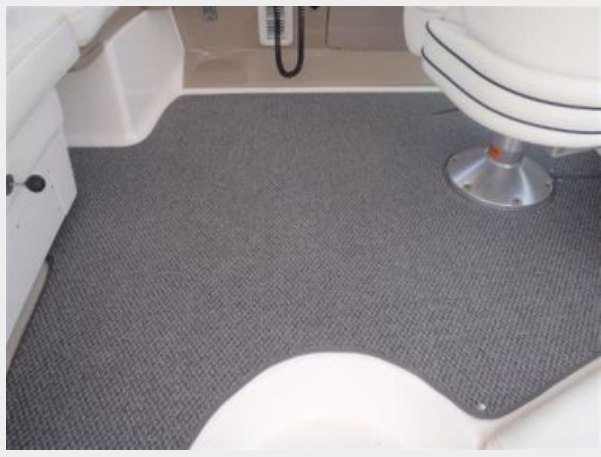
Owner's personal belongings.

Disclaimer

The Company offers the details of this vessel or yacht in good faith but cannot guarantee or warrant the accuracy of this information nor warrant the condition of the vessel. A buyer should instruct his representatives, agents, or his surveyors, to investigate such details as the buyer desires validated. This vessel or yacht is offered subject to prior sale, price change, or withdrawal without notice.

PHOTOS



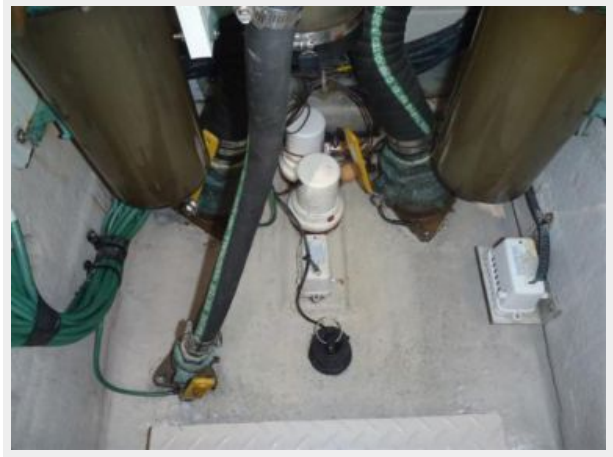
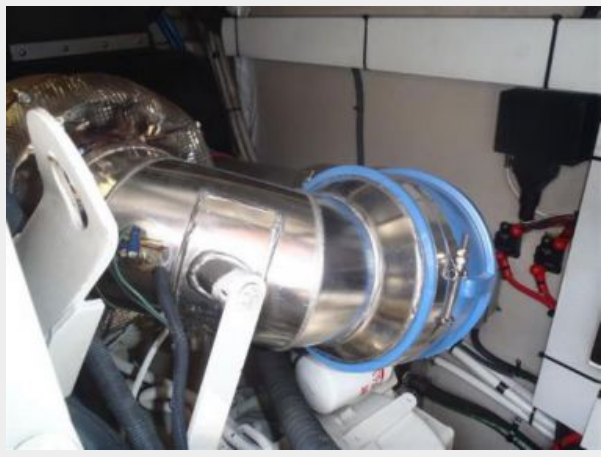














CONTACTS

Andrey Shestakov, leading yacht broker of the sales department of Shestakov Yacht Sales Inc. Shestakov Yacht Sales Inc., the official representative of the Miami/Fort Lauderdale FL headquarters.

Contact details

Email: andrey@shestakovyachtsales.com

Web: shestakovyachtsales.com/en/

Telephones

USA: +1(954)274-4435

Office hours

Monday – Saturday: **9:00 - 21:00** EDT

Sunday: **closed**

Address



Harbour Towne Marina, 850 NE 3rd St,
STE 213, Dania, FL 33004