

## EAGLE'S GIFT — NAUTOR'S SWAN



**Builder:** NAUTOR'S SWAN

**LOA:** 42' 0" (12.80m)

**Year Built:** 1985

**Beam:** 13' 0" (3.96m)

**Model:** Cruising Sailboat

**Min Draft:** 7' 11" (2.41m)

**Price:** PRICE ON APPLICATION

**Location:** United States

Our experienced yacht broker, Andrey Shestakov, will help you choose and buy a yacht that best suits your needs **EAGLE'S GIFT — NAUTOR'S SWAN** from our catalogue. Presently, at Shestakov Yacht Sales Inc., we have a wide variety of yachts available on our sale's list. We also work in close contact with all the big yacht manufacturers from all over the world.

If you would like to buy a yacht **EAGLE'S GIFT — NAUTOR'S SWAN** or would like help answering any questions concerning purchasing, selling or chartering a yacht, please call **+1(954)274-4435**

---

# TABLE OF CONTENTS

---

TABLE OF CONTENTS	2
SPECIFICATIONS	4
Overview	4
Basic Information	4
Dimensions	4
Speed, Capacities and Weight	4
Accommodations	4
Hull and Deck Information	5
Engine Information	5
DETAILED INFORMATION	6
Broker's Comments	6
History	6
Construction	6
Machinery	7
Electrical Systems	7
Plumbing Systems	8
Tankage	9
Navigation Equipment	9
Domestic Equipment	9
Accommodation	11
Cockpit	13
Deck Equipment	13
Exclusions	15
Disclaimer	15
PHOTOS	16
CONTACTS	23
Contact details	23
Telephones	23

---

Office hours	23
Address	23

---

---

# SPECIFICATIONS

---

## Overview

---

Seriously cosseted Swan 42 from 1985 spent a lot of her life under cover and heavily updated along the way.

*Offered to co-brokers on a commission split of 50/50.*

## Basic Information

---

**Category:** Cruising Sailboat

**Model Year:** 1985

**Year Built:** 1985

**Country:** United States

## Dimensions

---

**LOA:** 42' 0" (12.80m)

**LWL:** 33' 11" (10.34m)

**Beam:** 13' 0" (3.96m)

**Min Draft:** 7' 11" (2.41m)

## Speed, Capacities and Weight

---

**Displacement:** 24028.18193538 Pounds

**Water Capacity:** 80.308303808 Gallons

**Fuel Capacity:** 94.837766668 Gallons

## Accommodations

---

**Total Cabins:** 3

**Total Berths:** 8

**Total Heads:** 1

---

## Hull and Deck Information

---

**Hull Material:** GRP

**Deck Material:** GRP

**Hull Designer:** Ron Holland

---

## Engine Information

---

**Engines:** 1

**Manufacturer:** Yanmar

**Model:** 4JH5-E

**Engine Type:** Inboard

**Fuel Type:** Diesel

---

# DETAILED INFORMATION

---

## Broker's Comments

---

It has been a pleasure to follow this boat, having sold her as new to the first owner in 1985. A rare non teak deck boat, with lots of upgrades. The current owner has won his class in the ARC 2013 edition, and she was fifth in the general cruisers class (130 participants).

## History

---

- For the majority of her life EAGLE's GIFT was kept on the fresh water Great Lakes.
- She was stored in a heated building for the off season months.
- Fiberglass, not teak, side decks.
- EAGLE's GIFT is the last Swan 42 built of this model taking advantage of the knowledge learned from the previous 37 Swan 42s.
- Major refit in 2009/10 including the following: new Yanmar diesel engine, new standing rigging, new headsail roller furler, new North genoa, new deck plan to include fewer winches and line stoppers, all lines led aft, new water maker, new fridge and freezer, new pressure pumps, new Jabsco head and associated plumbing, new filters, new and additional diesel tank, new prop and prop shaft, new house and start batteries, new bimini, new 6 pack life raft, new bearings and seals for rudder, new antifouling, new fenders and updated EPIRB.

## Construction

---

### *Hull Construction:*

- White gel coat, solid fiberglass hull, with blue waterline stripes and sheer stripe.
- Baltiplate bottom paint.
- Reverse transom with storage tube for man overboard pole.

### *Deck Construction:*

- Unique to this Swan 42 the decks do not have teak overlay except for the cockpit seats and cockpit sole.
- The remainder of the decks are fiberglass with two tone gray non-skid paint and white

shine areas.

- The decks were reconfigured in 2010 for more efficient and modern use, which eliminated two of the standard L46 winches.

#### *Keel & Rudder:*

- Trapezoidal fin keel with 7'10" draft with spade rudder.
- Rudder bearings replaced (2010).

## **Machinery**

---

#### *Engine & Gearboxes:*

- 1 x Yanmar 4JH5-E 56hp diesel engine (2010).
- Racor fuel filter new 2010).

#### *Maintenance & Performance:*

- Engine Hours: c. 300.

#### *Propulsion & Steering:*

- Three blade folding prop.
  - Pedestal steering with stainless steel wheel and elkhide cover.
  - Stainless steel pedestal guard.
- Transmission (new 2010).
- Prop shaft (new 2010).
- Engine panel at helm station with instruments and Morse control (2010).
- Dripless shaft seal on prop shaft.
  - Emergency tiller.

## **Electrical Systems**

---

---

### *Voltage Systems:*

- 110 volt shore power system.
- 110 volt outlets throughout interior.
- 110 volt panel under seat in aft cabin.
- 12 volt DC system.
- 12 volt electrical panel at navigation station.
- 12 volt outlet at helm station.

### *Battery Banks:*

- House batteries, 12 volt (2010) located under starboard aft cabin berth.
- Engine start battery, 12 volt (2011).

### *Alternators:*

- Balmar 100 amp, 12 volt alternator.

### *Shore Power:*

- Shore power cord.

### *Other Electrical:*

- Anchor windlass and other electrical system switches under navigation station seat.

---

## **Plumbing Systems**

---

### *Fresh Water & Water Heating System:*

- Racor fresh water filter under galley sink.

### *Watermaker:*

- Katadyn water maker (new 2010).



### *Bilge Pumps:*

- Manual bilge pump in cockpit.
- Rule mate electric bilge pump.

## **Tankage**

---

### *Fuel:*

- Total capacity of 359 litres (79 gallons).
- Additional fuel tank added to assist with long distance cruising (2010).

### *Fresh water:*

- Total capacity of 304 litres (67 gallons).

## **Navigation Equipment**

---

- Raytheon R-10XX radar.
- Northstar 6000i at pedestal and navigation station.
- Suunto pedestal compass.
- Standard Horizon Quest VHF at helm station.
- B and G analogue displays at forward end of aft cockpit include magnified wind direction, wind direction, apparent and true wind speeds, true wind angle, boat speed, depth, log and VMG and 390 controller with next leg bearing.
- B and G Hercules system 390 master display at navigation station.
- Other instruments at navigation station includes B and G boat speed, true wind angle and depth.
- Icom HF Marine IC-M802 SSB.
- Icom IC-M502 VHF.
- Northstar 951X GPS navigator.
- VDO Quarz-Zelt clock.
- VDO barometer.

## **Domestic Equipment**

---

### *Galley:*

- Two stainless steel sinks with hot and cold pressure water.

- Salt water foot pump.
- Filtered fresh water foot pump.
- Fresh water tank vents.
- Sea Frost fridge and freezer (new 2010) air and water cooled with holding plates and spill over to fridge. 6.2 cubic feet of refrigeration is driven 12V only.
- Mobilife propane three burner stove with oven and heavy weather safety strap.

*Note: Butane system for European use, for US buyer conversion back to propane would be necessary.*

#### *Heads/Showers:*

- Jabsco head and plumbing (new 2010).
- Sink with hot and cold pressure water.
- Telephone type shower.

#### *Heating & Ventilation:*

- 1 large sliding hatch over the forward cabin.
- 2 small opening hatches over the forward cabin.
- 1 hatch over the saloon.
- 1 hatch over aft cabin.
- Dorade vent over the forward cabin.
- 2 dorade vents, 1 each over the galley and navigation station.
- Each dorade vent has stainless steel protection rails.
- 2 mushroom vents, 1 each over the head and aft cabin.
- 1 mushroom vent in the forward cockpit to the aft cabin.
- 2 opening ports in the forward cockpit, 1 each to the galley and navigation station.
- 1 opening port in the aft cockpit to the aft cabin.
- 2 x Hella turbo fans in saloon.

#### *Entertainment:*

- Kenwood stereo with CD player.

---

## Accommodation

---

### *Summary of Accommodation:*

- Can sleep up to 8 in three separate cabins.
- 2 in the forward cabin, 3 in the aft cabin and 3 in the main saloon.
- 1 head.
- Interior finished with Burmese teak with hand rubbed finish.
- Teak and holly cabin sole throughout except where noted.
- The bridge deck allows for headroom in the aft cabin.
  - 2 deck prisms over the forward cabin.

### *Description of layout from forwards:*

#### *Forward Cabin:*

- 2 canvas pipe berths with foam tops that fold up against the hull.
- With rails. Storage bins under the berths.
- Teak slats, as opposed to teak and holly, over the cabin sole.
- Teak slats on the hull sides.
- Storage with shelves and hanging locker aft port and starboard.
- Additional storage in drawers and cupboard against the aft bulkhead.
- Steps up to the sliding deck hatch.

#### *Saloon:*

- Located aft of the forward cabin.
- "L" shaped settee to port with fold out to make a small double berth.
- Straight settee to starboard.

- 
- Tan velour type upholstery.
  - Stainless steel water tanks under the settees.
  - Storage lockers behind the settee seat backs.
  - Shelving and storage lockers above and behind each settee.
  - Table on the centerline with folding leaves each side.
  - Small storage compartment in table top for bottles.

#### *Galley:*

- Located aft of the saloon and on the port side.
- "L" shaped.
- Shelving outboard.
- Drawers aft.
- Dish storage locker under companionway.

#### *Navigation Station:*

- Located starboard side opposite the galley and aft of the saloon.
  - Forward facing.
  - Curved seat for added comfort at sea.
  - Surrounded by navigation electronics, communications electronics and 12 volt DC panel.
- Companionway located between the navigation station and the galley.
- Custom cabinetry added up high and behind the companionway steps.
  - Engine access below the companionway steps.

#### *Aft Cabin:*

- Located in the stern.
- Double berth to starboard, single berth to port.

- Seat between berths.
- Vanity forward and on the centerline with access to the aft end of the engine under the vanity.

#### *Heads Compartment:*

- Located on the starboard side between the navigation station and the aft cabin.
- Access door from both aft cabin and navigation station.
- Teak grating on the cabin sole.

## Cockpit

---

- Standard two cockpit layout.
- Aft cockpit with steering station is separated by a bridge deck from the forward cockpit with access to the companionway.

## Deck Equipment

---

#### *Rig:*

- All of the running rigging is lead aft and line stoppers have been added.
  - Aluminum genoa tracks with twin Lewmar adjustable sheet blocks.
  - Mainsheet traveller with Lewmar hardware.
  - Silver anodised, aluminum, double spreader Nautor built mast.
  - Silver anodised, aluminum, Nautor built boom.
  - 2 x silver anodised, aluminum, Nautor built spinnaker poles with deck stowage fittings.
  - Silver anodised, aluminum, Nautor built spinnaker strut with deck stowage fittings, needs repair.
  - Navtec stainless steel rod rigging (new 2010).
  - Navtec hydraulic boom vang.
  - Navtec hydraulic backstay.
  - Navtec hydraulic babystay.
  - Harken headsail roller furling system (new 2010).

#### *Winches:*

- All serviced 2010.
- All black anodised, self-tailing, 2 speed by Lewmar.
- 2 x #65, primaries.
- 2 x #55, secondaries.
- 2 x #48, halyard and reef lines.
- 1 x #40, mainsheet.

### *Sails:*

- Racing full batten mainsail, on boat.
- Roller furling genoa (North 2010), on boat, #1.
- Roller furling jib.
- Storm jib, as new.
- Storm trysail, as new.
- 2 spinnaker (1/2 oz, blue white in good shape, tri radial in good shape, some stains).
- 1 gennaker.
- Staysail, light weight.

### *General:*

- Stainless steel bow and stern rails.
- Lifeline gate port and starboard.
- Gate in stern rail with fold down swim ladder.
- Aluminum silver anodised toe rails.
- 2 cockpit seat lockers, 1 each to port and starboard.
- Additional seat locker for propane aft under curved helm seat.
- Radar antenna post aft to port.
- Cockpit table.

### *Anchoring & Mooring Equipment:*

- Anchor locker access from a hatch on the foredeck.
- Windlass located inside locker.
- Stainless steel stem head fitting with single delrin roller.
- 2 pair of mooring cleats, 1 pair forward and 1 pair aft, each with a fairlead.
- Lofrans Cayman T1000 Electric windlass. Horizontally mounted in the anchor locker. Winch and chain gypsy. Electric "up" foot switch.
- 45lb CQR anchor with chain and rode.
- Additional anchor 35 lbs (2013), Britanic.
- 3 x fenders.

*Covers, Canvas & Cushions:*

- 1 Dodger over companionway.
- 1 Dodger protecting forward end of aft cockpit.

*Safety Equipment:*

- Double, 1x19, stainless steel, wire life lines.
- 6 pack life raft (new 2010), but needs recertification
- Lifesling.
- EPIRB.
- Radar reflector.

*Fire-fighting equipment:*

- Fireboy Halon 130, fire system.

## **Exclusions**

---

Owner's personal belongings.

## **Disclaimer**

---

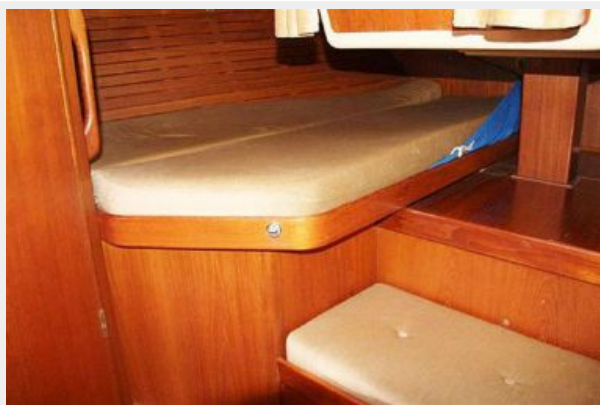
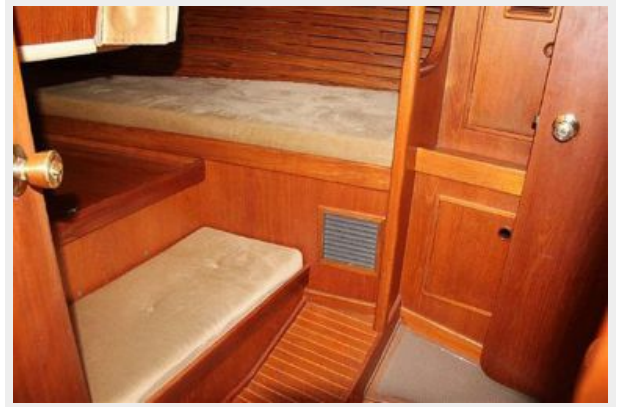
The Company offers the details of this vessel or yacht in good faith but cannot guarantee or warrant the accuracy of this information nor warrant the condition of the vessel. A buyer should instruct his representatives, agents, or his surveyors, to investigate such details as the buyer desires validated. This vessel or yacht is offered subject to prior sale, price change, or withdrawal without notice.

# PHOTOS







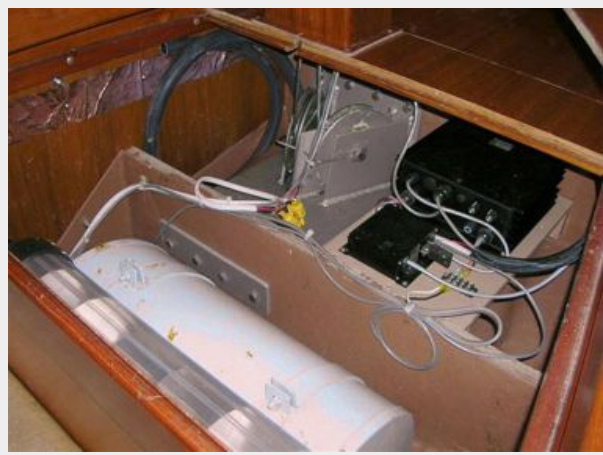














---

# CONTACTS

---

Andrey Shestakov, leading yacht broker of the sales department of Shestakov Yacht Sales Inc. Shestakov Yacht Sales Inc., the official representative of the Miami/Fort Lauderdale FL headquarters.

---

## Contact details

---

Email: [andrey@shestakovyachtsales.com](mailto:andrey@shestakovyachtsales.com)

Web: [shestakovyachtsales.com/en/](http://shestakovyachtsales.com/en/)

---

## Telephones

---

USA: +1(954)274-4435

---

## Office hours

---

Monday – Saturday: **9:00 - 21:00** EDT

Sunday: **closed**

---

## Address

---



Harbour Towne Marina, 850 NE 3rd St,  
STE 213, Dania, FL 33004