

RO106 — FERRETTI



Builder: FERRETTI

LOA: 53' 0" (16.15m)

Year Built: 2004

Beam: 15' 4" (4.67m)

Model: Cruiser

Max Draft: 4' 9" (1.45m)

Price: PRICE ON APPLICATION

Location: United States

Our experienced yacht broker, Andrey Shestakov, will help you choose and buy a yacht that best suits your needs **RO106 — FERRETTI** from our catalogue. Presently, at Shestakov Yacht Sales Inc., we have a wide variety of yachts available on our sale's list. We also work in close contact with all the big yacht manufacturers from all over the world.

If you would like to buy a yacht **RO106 — FERRETTI** or would like help answering any questions concerning purchasing, selling or chartering a yacht, please call **+1(954)274-4435**

TABLE OF CONTENTS

TABLE OF CONTENTS	2
SPECIFICATIONS	3
Overview	3
Basic Information	3
Dimensions	3
Speed, Capacities and Weight	3
Accommodations	3
Hull and Deck Information	3
Engine Information	4
DETAILED INFORMATION	5
Accommodations	5
Electronics	5
Mechanical & Electrical	5
Exclusions	5
Disclaimer	6
PHOTOS	7
CONTACTS	14
Contact details	14
Telephones	14
Office hours	14
Address	14

SPECIFICATIONS

Overview

Very clean, well maintained Fly bridge model. Turn key and ready to cruise. Easily seen. All service records can be provided upon request Seller is very motivated to get into his next vessel.

Basic Information

Category: Cruiser

Sub Category: Sport Cruiser

Model Year: 2004

Year Built: 2004

Country: United States

Vessel Top: Bimini Top

Fly Bridge: Yes

Dimensions

LOA: 53' 0" (16.15m)

Beam: 15' 4" (4.67m)

Max Draft: 4' 9" (1.45m)

MFG Length: 54' 0" (16.46m)

Speed, Capacities and Weight

Displacement: 54684 Pounds

Water Capacity: 201 Gallons

Holding Tank: 45 Gallons

Fuel Capacity: 634 Gallons

Accommodations

Total Cabins: 3

Total Heads: 2

Hull and Deck Information

Hull Material: Fiberglass

Engine Information

Engines: 2

Manufacturer: Caterpillar

Model: C12 6L

Engine Type: Inboard

Fuel Type: Diesel

DETAILED INFORMATION

Accommodations

- 3 Cabin, 2 Head layout.
- Master has Queen berth and En Suite head w/shower
- 2 Guest cabins have twin berths and share head w/shower
- 4 Burner cook top
- Microwave Oven
- Refrigerator
- A/C
- Hot water heater

Electronics

- Depth Sounder
- Log-Speedometer
- Plotter
- Autopilot
- Radar
- GPS
- VHF radio
- Compass
- TV/DVD/CD/radio
- Cockpit Speakers

Mechanical & Electrical

- Twin CAT C12 6L @715 hp each
- Generator
- Bow Thruster
- Electric bilge pump
- Sea water pump
- Battery charger
- Shore Power inlet

Exclusions

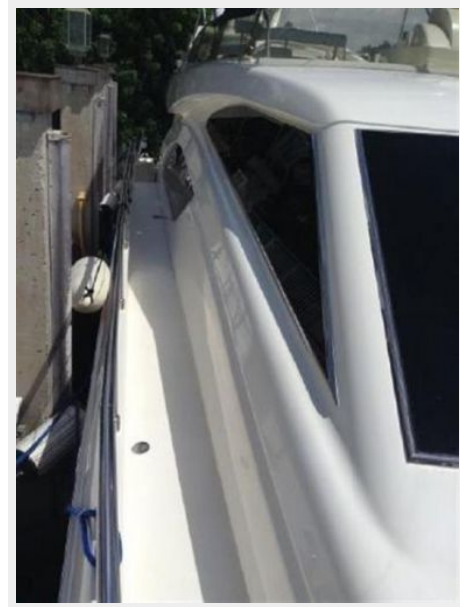
Owner's personal belongings.

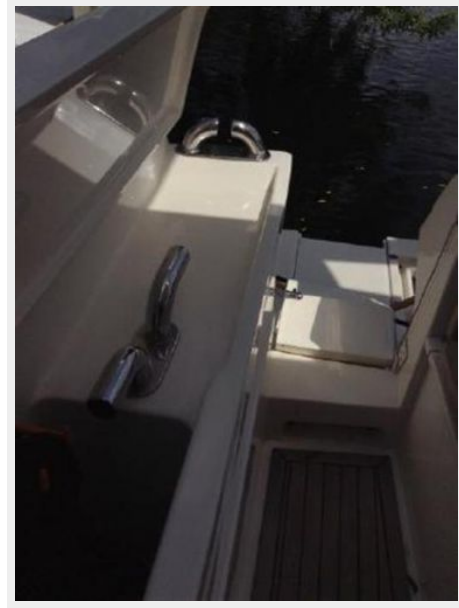
Disclaimer

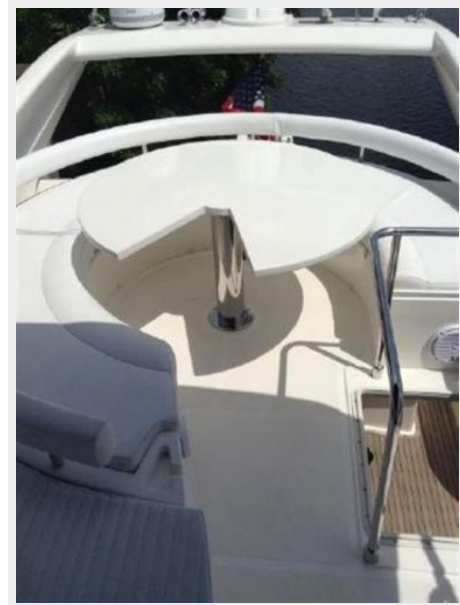
The Company offers the details of this vessel or yacht in good faith but cannot guarantee or warrant the accuracy of this information nor warrant the condition of the vessel. A buyer should instruct his representatives, agents, or his surveyors, to investigate such details as the buyer desires validated. This vessel or yacht is offered subject to prior sale, price change, or withdrawal without notice.

PHOTOS

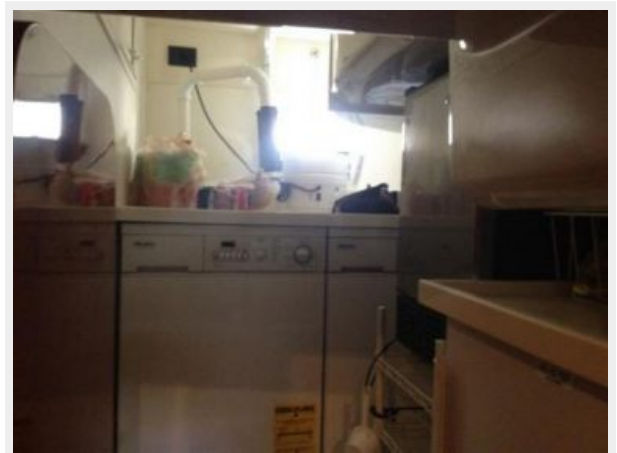














CONTACTS

Andrey Shestakov, leading yacht broker of the sales department of Shestakov Yacht Sales Inc. Shestakov Yacht Sales Inc., the official representative of the Miami/Fort Lauderdale FL headquarters.

Contact details

Email: andrey@shestakovyachtsales.com

Web: shestakovyachtsales.com/en/

Telephones

USA: +1(954)274-4435

Office hours

Monday – Saturday: **9:00 - 21:00** EDT

Sunday: **closed**

Address



Harbour Towne Marina, 850 NE 3rd St,
STE 213, Dania, FL 33004