

CICIAN — SUNSEEKER



Builder: SUNSEEKER

Year Built: 2015

Model: Motor Yacht

Price: PRICE ON APPLICATION

Location: United States

LOA: 75' 0" (22.86m)

Beam: 18' 10" (5.74m)

Max Draft: 5' 4" (1.63m)

Cruise Speed: 25 Kts. (29 MPH)

Max Speed: 34 Kts. (39 MPH)

Our experienced yacht broker, Andrey Shestakov, will help you choose and buy a yacht that best suits your needs **Cician — SUNSEEKER** from our catalogue. Presently, at Shestakov Yacht Sales Inc., we have a wide variety of yachts available on our sale's list. We also work in close contact with all the big yacht manufacturers from all over the world.

If you would like to buy a yacht **Cician — SUNSEEKER** or would like help answering any questions concerning purchasing, selling or chartering a yacht, please call **+1(954)274-4435**

TABLE OF CONTENTS

TABLE OF CONTENTS	2
SPECIFICATIONS	3
Overview	3
Basic Information	3
Dimensions	3
Speed, Capacities and Weight	3
Accommodations	3
Hull and Deck Information	4
Engine Information	4
DETAILED INFORMATION	5
Accommodations	5
Cockpit	6
Main Salon & Dining	6
Galley	6
Helm	6
Fly Bridge	7
Deck Equipment	7
Mechanical & Electrical	8
Exclusions	8
Disclaimer	8
PHOTOS	9
CONTACTS	18
Contact details	18
Telephones	18
Office hours	18
Address	18

SPECIFICATIONS

Overview

Stunning. A harmonious blend of modern & classic design. 4 staterooms each w/en suite head & shower plus crew accommodations aft.

Not for sale to US residents while in US waters

Basic Information

Category: Motor Yacht

Sub Category: Flybridge

Model Year: 2015

Year Built: 2015

Country: United States

Vessel Top: Open

Dimensions

LOA: 75' 0" (22.86m)

Beam: 18' 10" (5.74m)

Max Draft: 5' 4" (1.63m)

Speed, Capacities and Weight

Cruise Speed: 25 Kts. (29 MPH)

Max Speed: 34 Kts. (39 MPH)

Displacement: 102294 Pounds

Water Capacity: 317 Gallons

Holding Tank: 49 Gallons

Fuel Capacity: 1321 Gallons

Accommodations

Total Cabins: 4

Total Heads: 4

Crew Cabin: 1

Hull and Deck Information

Hull Material: Fiberglass

Engine Information

Manufacturer: MAN

Model: V12

Engine Type: Inboard

Fuel Type: Diesel

DETAILED INFORMATION

Accommodations

4 Staterooms each with en suite head and shower plus crew accommodations aft.

MASTER: Amidship, full beam

- Walk around queen berth with storage below
- 2 x Nightstands
- Vanity w/stool
- Settee
- Samsung 55" LED TV
- Samsung Sound Bar
- Pioneer 3D Blu-Ray DVD
- Walk-in closet w/built in drawers
- Mini-bar w/refrigerator
- En Suite head w/stall shower

VIP: Forward

- Queen berth w/storage below
- Hanging locker
- Vanity
- Samsung 40" LED TV
- Fusion DVD/CD/Radio Tuner
- En Suite head w/stall shower

GUEST CABIN: Starboard

- Double berth w/storage below
- 2 x Nightstands
- Hanging locker
- Samsung 32" LED TV
- Fusion DVD/CD/Radio Tuner
- En Suite head w/stall shower

GUEST CABIN: Port

- 2 x Twin berths w/drawers below
- Nightstand
- Hanging locker
- Samsung 22" LED TV
- Fusion DVD/CD/Radio Tuner
- En Suite head w/stall shower

CREW CABIN: Aft

- Twin berth w/ En Suite head & shower
- Miele washer & dryer

Cockpit

- Large U-settee w/storage below
- Folding leaf table
- Beverage cool box
- Stairway to flybridge (S)
- Dual stairways to swim platform

Main Salon & Dining

- Custom settee & coffee table (S)
- 2 x Custom arm chairs & table (P)
- Samsung 55" LED TV
- Harmon Kardon Blu-ray w/Cinema surround-sound system
- Fusion CD & radio
- Glass top dining table w/seating for 8 (S)
- U-line wine cooler
- Cabinetry in white oak w/wenge wood cabinet doors
- American Walnut sole

Galley

Main Deck, port side

- Subzero Icemaker
- 4 Burner ceramic cooktop
- Master Chef oven
- Sharp microwave
- Miele Dishwasher
- White oak cabinetry w/wenge wood cabinet doors
- Granite counter tops
- American walnut sole

Helm

Main Deck, starboard

- 2 x Helm seats
- L-shaped observation settee (P)
- Black leather helm console
- 2 x Simrad IS40 speed & depth indicators
- Simrad AC 12 Autopilot
- 2 x Simrad touch screen Chartplotter
- Simrad GS25 GPS
- Simrad RS90 VHF

Fly Bridge

- 2 x Helm chairs
- Jabsco Searchlight
- 2 x Simrad IS40 speed & depth indicators
- 2 x Simrad touch screen Chartplotter
- Simrad AP repeater
- Simrad VHF radio
- AFI dual trumpet air horns
- 2 x Fusion stereo speakers
- Bench seating (P)
- U-settee w/custom teak pedestal table
- Wet bar
- Ceramic grill
- Victrofrigo Icemaker
- Beverage cool box
- Waeco refrigerator
- Large Sunpad
- Teak deck

Deck Equipment

- 50 kg Delta anchor
- 60m Galvanized anchor chain
- 24v Lewmar anchor winch
- Fresh water deck wash
- Teak side decks, aft deck, swim platform and flybridge
- 2 x Sunpads w/folding backrests (FB & foredeck)
- Foredeck bench seat w/teak cupholders
- Hydraulic passerelle
- Hydraulic lift platform
- Lewmar stern docking winches
- Stern docking lights

Mechanical & Electrical

- 2 x MAN V12's @1,550 hp ea.
- 2 x 27.5kW 60 hz Onan generators
- Sleipner bow & stern thrusters
- Sleipner stabilizers
- A/C upgraded to tropical specification
- 7 zone Fire & Bilge Flood monitoring system
- 100 amp Glendinning Cablemaster

Exclusions

Owner's personal belongings.

Disclaimer

The Company offers the details of this vessel or yacht in good faith but cannot guarantee or warrant the accuracy of this information nor warrant the condition of the vessel. A buyer should instruct his representatives, agents, or his surveyors, to investigate such details as the buyer desires validated. This vessel or yacht is offered subject to prior sale, price change, or withdrawal without notice.

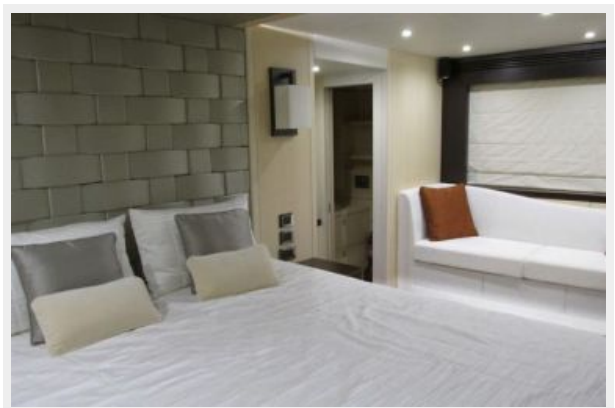
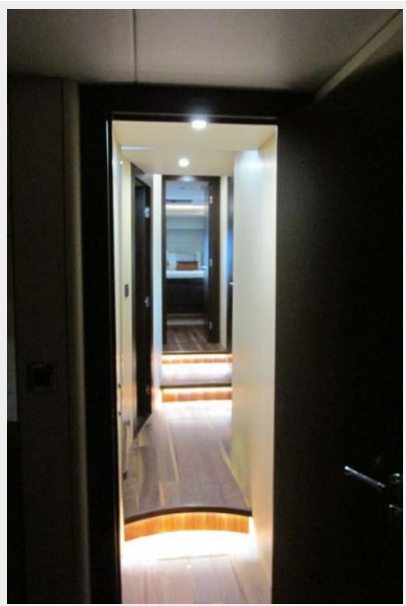
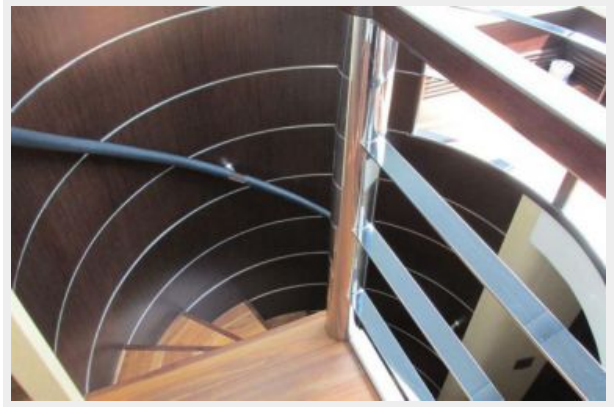
PHOTOS

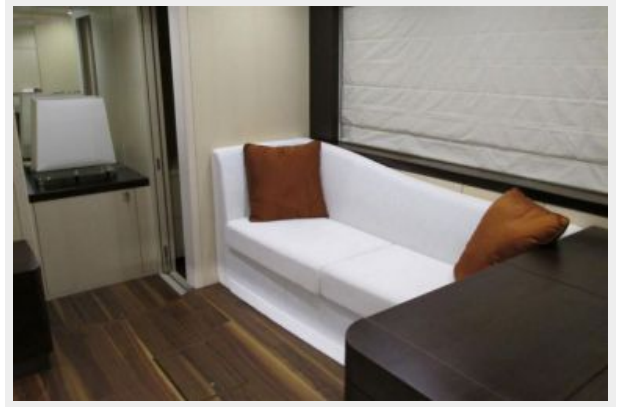






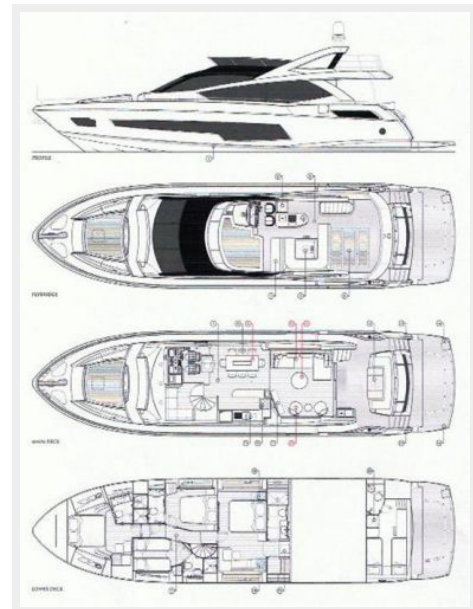












CONTACTS

Andrey Shestakov, leading yacht broker of the sales department of Shestakov Yacht Sales Inc. Shestakov Yacht Sales Inc., the official representative of the Miami/Fort Lauderdale FL headquarters.

Contact details

Email: andrey@shestakovyachtsales.com

Web: shestakovyachtsales.com/en/

Telephones

USA: +1(954)274-4435

Office hours

Monday – Saturday: **9:00 - 21:00** EDT

Sunday: **closed**

Address



Harbour Towne Marina, 850 NE 3rd St,
STE 213, Dania, FL 33004